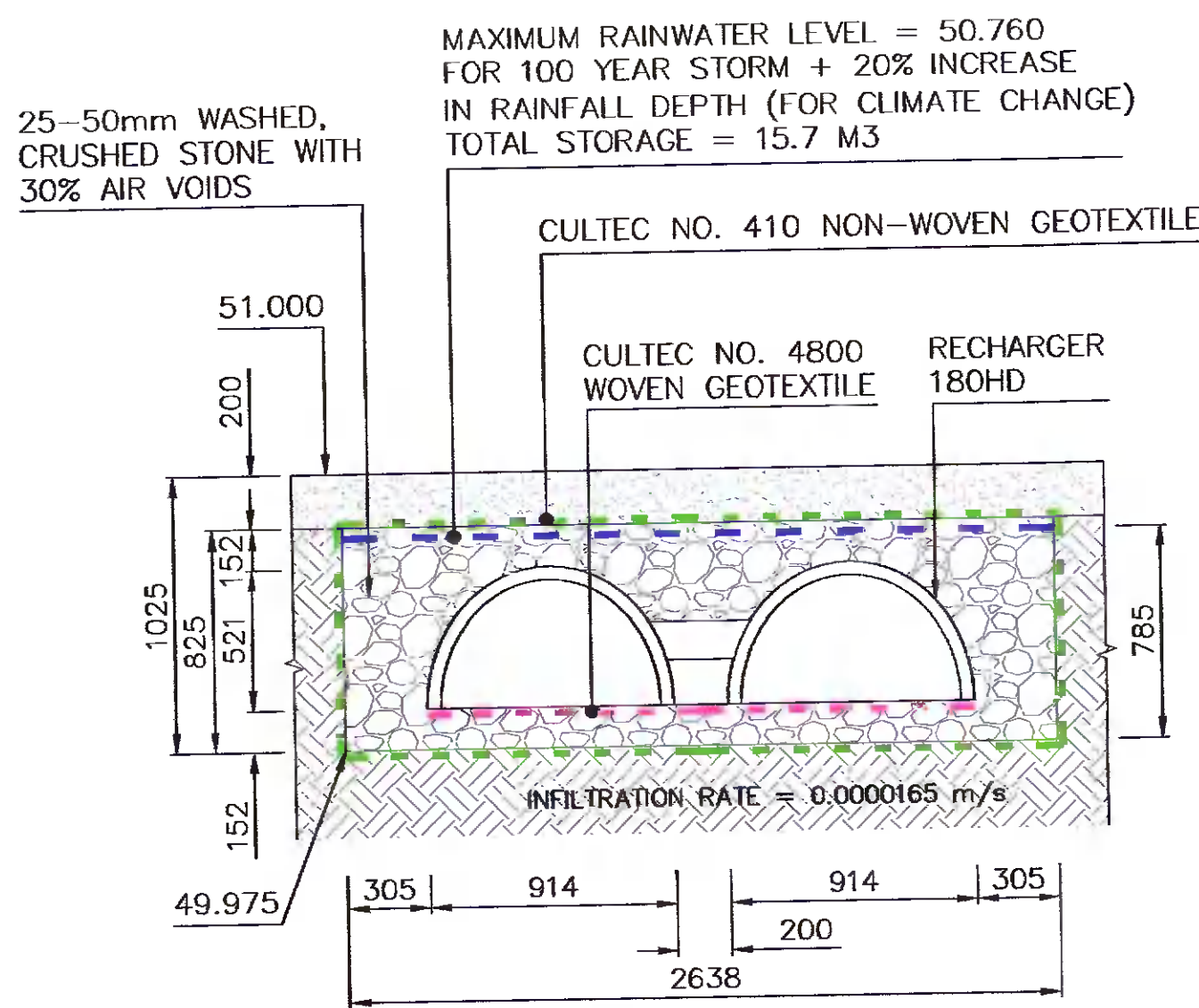
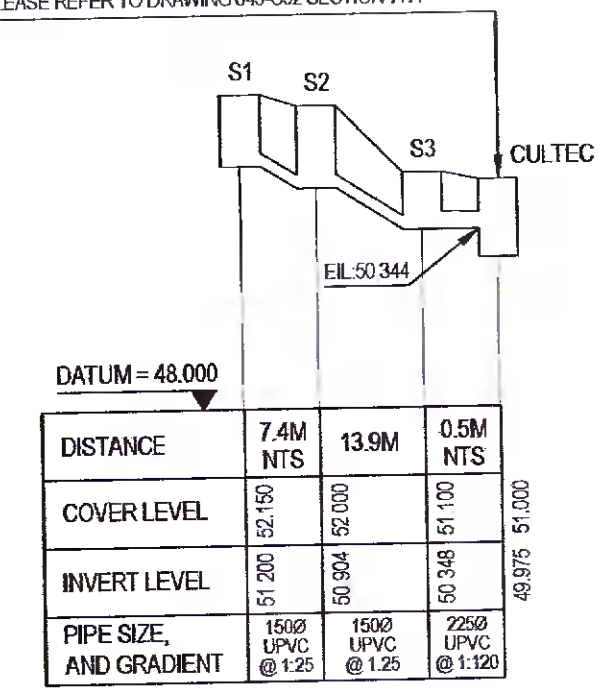


THIS DRAWING TO BE READ IN CONJUNCTION WITH ALL RELEVANT DRAWINGS AND SPECIFICATIONS. DO NOT SCALE FROM THIS DRAWING. FIGURE DIMENSION ONLY TO BE USED. ALL DIMENSIONS ARE IN MILLIMETERS EXCEPT WHERE SHOWN. ANY DISCREPANCIES ON THIS DRAWING OR ON SITE ARE TO BE REPORTED TO THE ENGINEER. THIS DRAWING IS THE PROPERTY OF STINGRAY ENVIRONMENTAL ENGINEERING LTD, IT IS A CONFIDENTIAL DOCUMENT AND MUST NOT BE COPIED, OR ITS CONTENT DIVULGED WITHOUT PRIOR WRITTEN CONSENT.

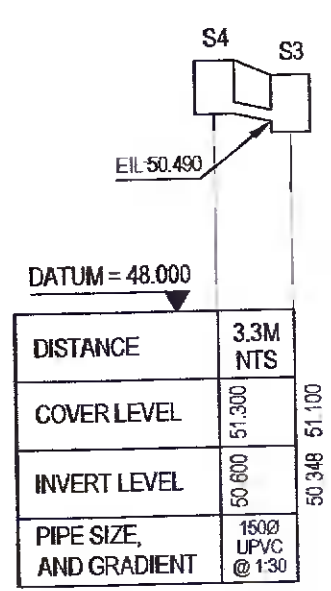


SECTION 'A-A'
PROPOSED CULTEC (OR SIMILAR APPROVED)
STORMWATER MANAGEMENT SYSTEM - SYSTEM A - TOTAL INFILTRATION
SCALE 1:25 @ A2

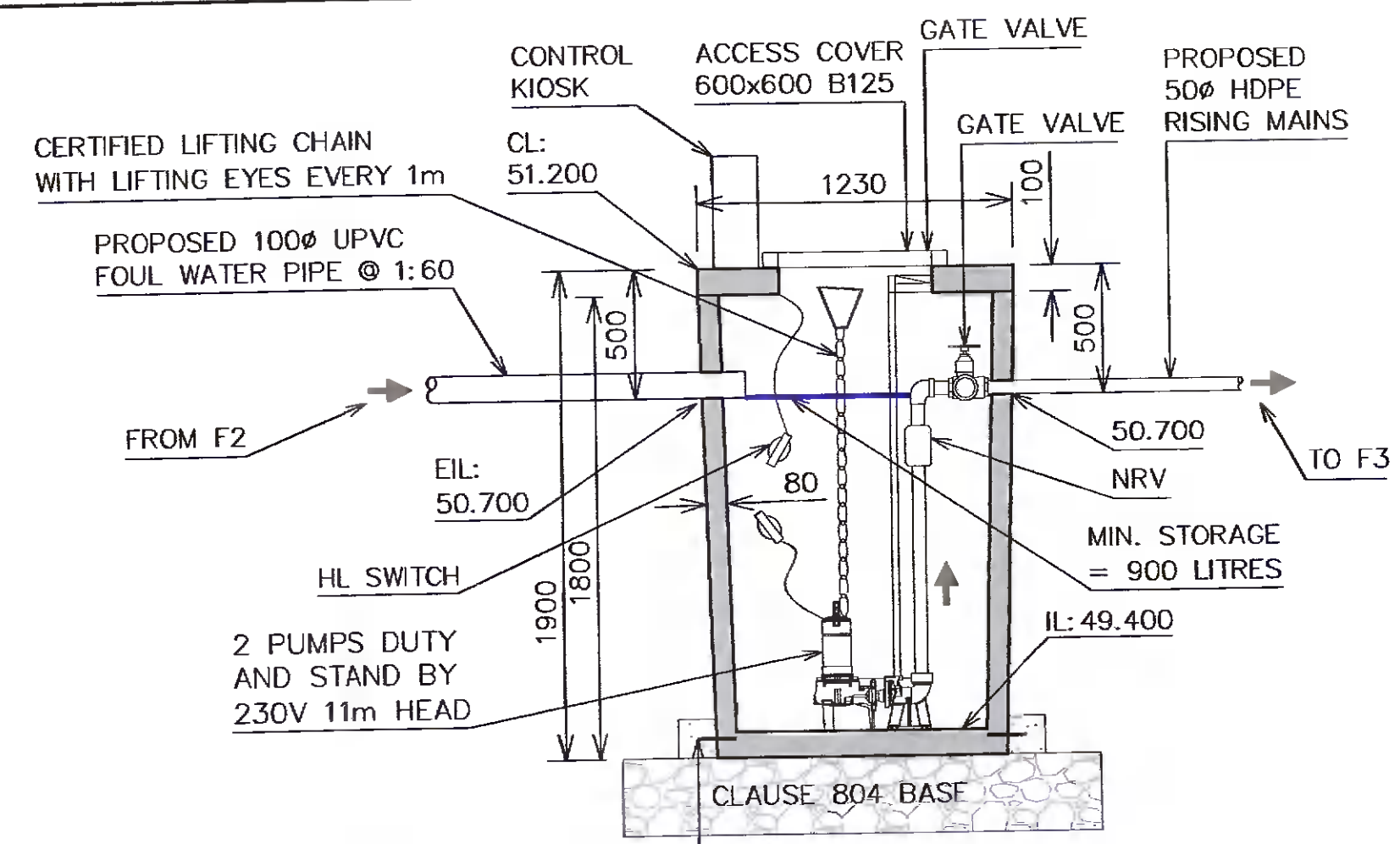
PROPOSED CULTEC (OR SIMILAR APPROVED) STORM WATER MANAGEMENT SYSTEM A WITH TOTAL INFILTRATION SYSTEM DESIGNED FOR 100 YEAR STORM + 20% INCREASE IN RAINFALL DEPTH (FOR CLIMATE CHANGE). TOTAL STORAGE = 15.7 m³, COLLECTION AREA = 300.0 m², INFILTRATION RATE = 0.0000165 m/s. FOR DETAILS PLEASE REFER TO DRAWING 645-C02 SECTION 'A-A'



LONGITUDINAL SECTION S1 TO CULTEC
SCALE: HORIZONTAL 1:1000 / VERTICAL 1:100 @ A2

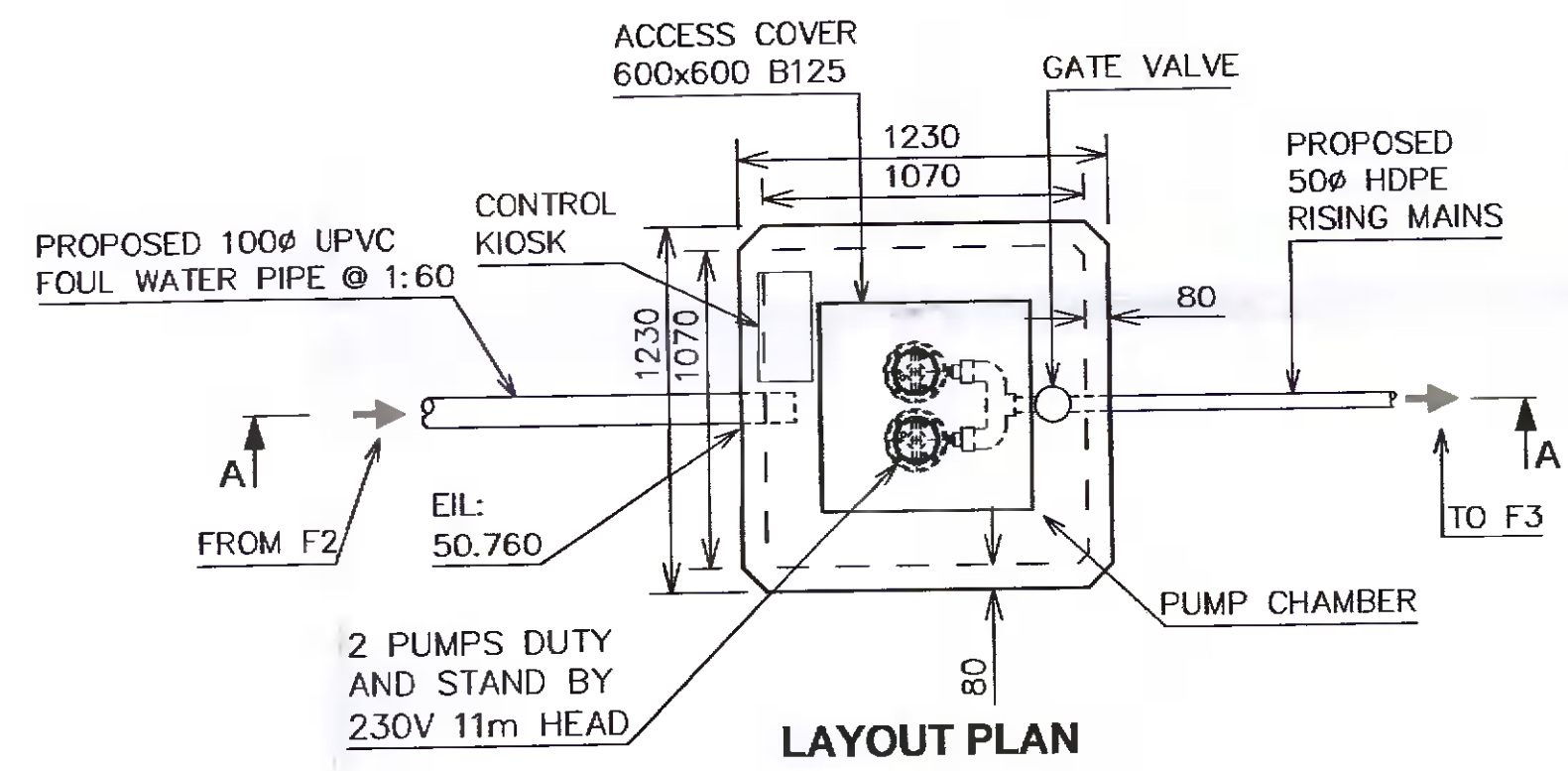


LONGITUDINAL SECTION S4 TO S3
SCALE: HORIZONTAL 1:1000 / VERTICAL 1:100 @ A2



TBC: ADDITIONAL ANTI-FLOATATION SYSTEM IF REQUIRED: 150mm LONG/12mmØ DOWEL BARS & C25/30 CONCRETE BALLAST

SECTION A-A



DETAIL 'A'
PROPOSED PRECAST CONCRETE FOUL WATER PUMPING STATION
SCALE 1:25 @ A2

CLARIFICATION OF ADDITIONAL INFORMATION
DECISION ORDER NUMBER: 0308
REGISTER REFERENCE: SD21B/0589

REV.	DATE	DESCRIPTION
A	21.03.2022	CLARIFICATION OF AI

CLIENT: BRIAN AND LAUREN MONAGHAN	 STINGRAY ENVIRONMENTAL ENGINEERING LTD. 2 Forgehill Close Stamullen, Co. Meath K32VK76 Tel: 01 694 91 74 Mobile: 085 721 55 90 info@stingrayenvironmental.ie
PROJECT: TIG MUIRE, OLD BRIDGE ROAD, TEMPLEOGUE, DUBLIN 16	
DRAWING TITLE: DRAINAGE DETAILS	DWG. STATUS: CLARIFICATION OF AI
SCALE: AS NOTED @ A2	DATE: FEBRUARY 2022
DRAWING NUMBER: 645-C02	REVISION: A