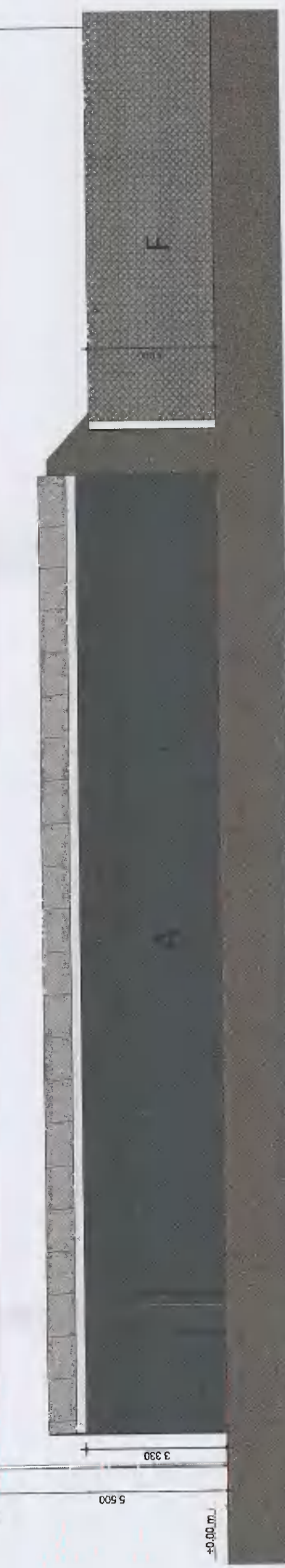
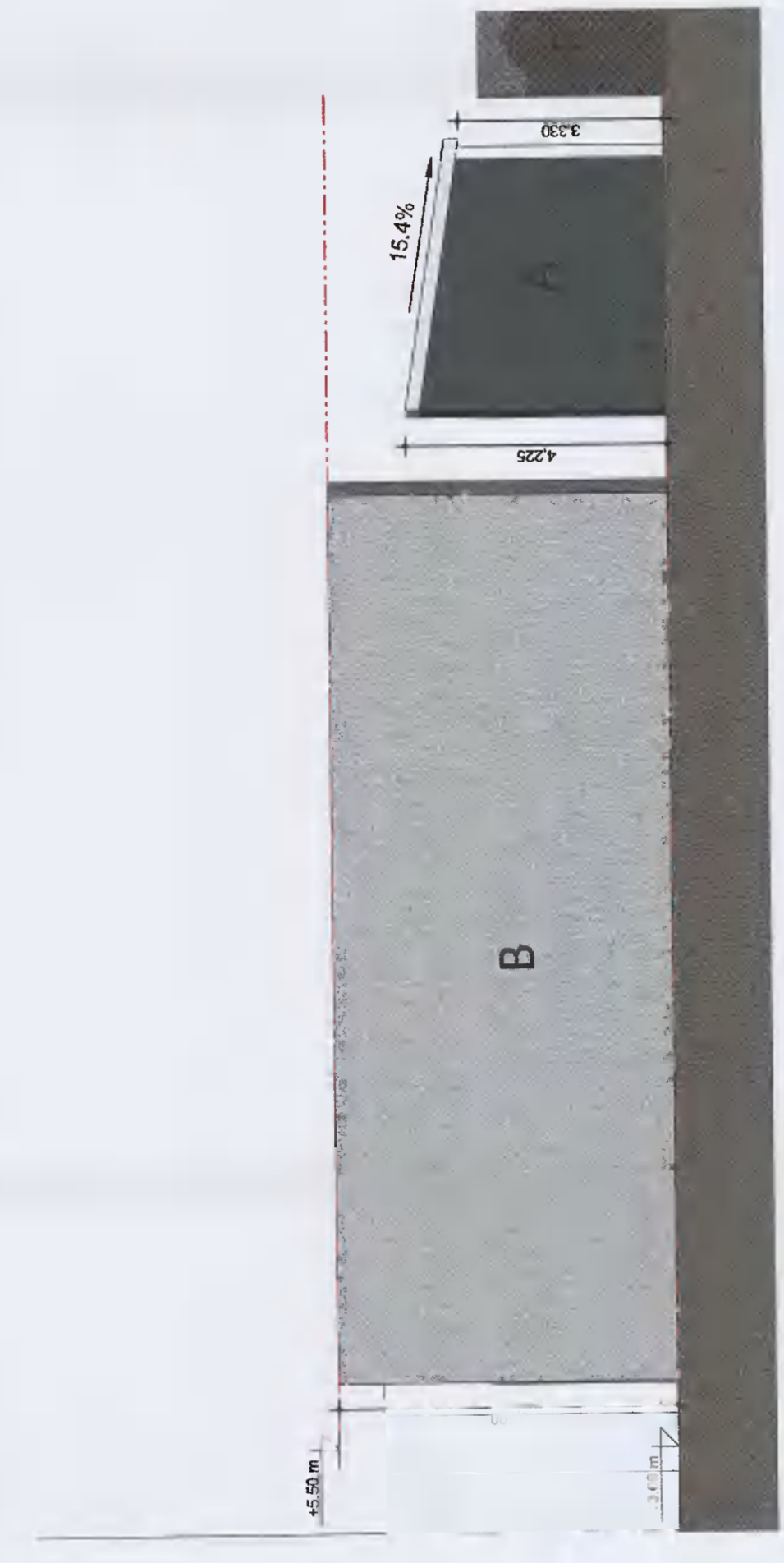


FINISHES KEY

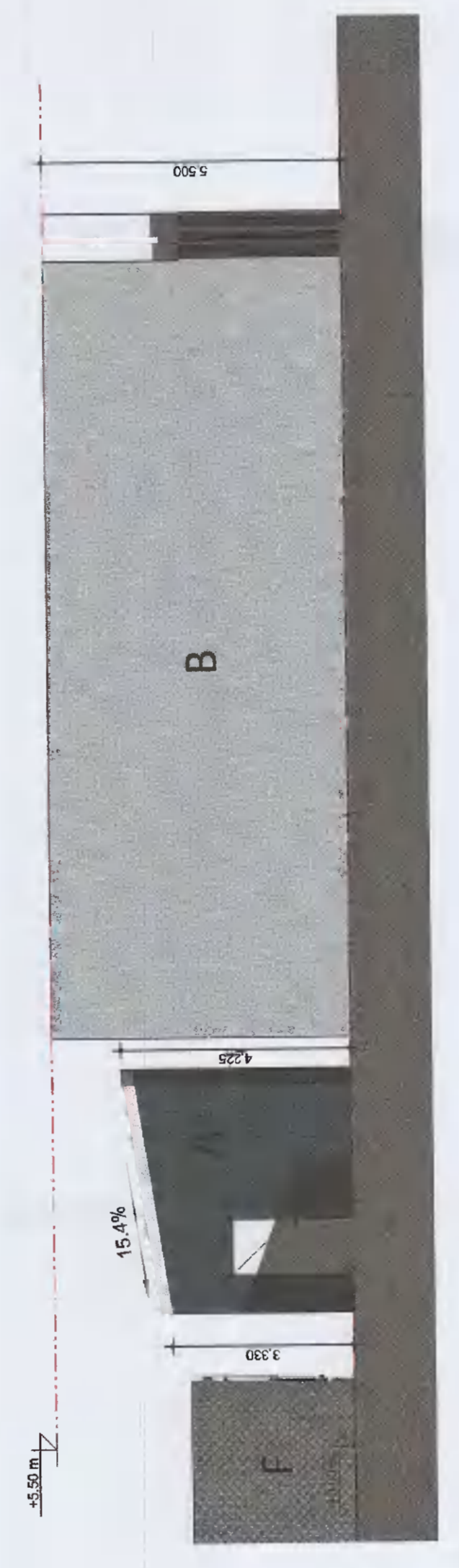
| REF | MATERIAL | COLOR | SWITCH |
|-----|---|-----------------------|--------|
| A | Insulated Metal Sandwich Panel Trimmerson FTV | Light Grey RAL 7035 | |
| B | Insulated Metal Sandwich Panel Trimmerson FTV | Reseda Green RAL 6011 | |
| C | Insulated Metal Sandwich Panel Trimmerson FTV | White RAL 9010 | |
| D | Insulated Metal Sandwich Panel Trimmerson FTV | White RAL 9010 | |
| E | Insulated Metal Sandwich Panel Trimmerson FTV | White RAL 9010 | |
| F | Insulated Metal Sandwich Panel Trimmerson FTV | White RAL 9010 | |
| G | Insulated Metal Sandwich Panel Trimmerson FTV | White RAL 9010 | |
| H | Aluminium Curtain Wall System Schuco FWS50 | Black RAL 9005 | |
| I | Aluminium Curtain Wall System Schuco FWS50 | Black RAL 9005 | |
| J | Aluminium Curtain Wall System Schuco FWS50 | Black RAL 9005 | |
| K | Security Fence | Black RAL 9005 | |
| L | Barrenstein castcrete cladding Kongsbak | Black RAL 9005 | |
| M | Barrenstein castcrete cladding Kongsbak | Black RAL 9005 | |
| N | Barrenstein castcrete cladding Kongsbak | Black RAL 9005 | |
| O | Barrenstein castcrete cladding Kongsbak | Black RAL 9005 | |
| P | Grey paint on steelwork | Yellow RAL 1018 | |
| Q | Solar control glazing | Grey tint | |
| R | Solar control glazing | Grey tint | |
| S | Galvanized steel | Natural finish | |



③ STEP UP SUBSTATION - EAST ELEVATION
1:100



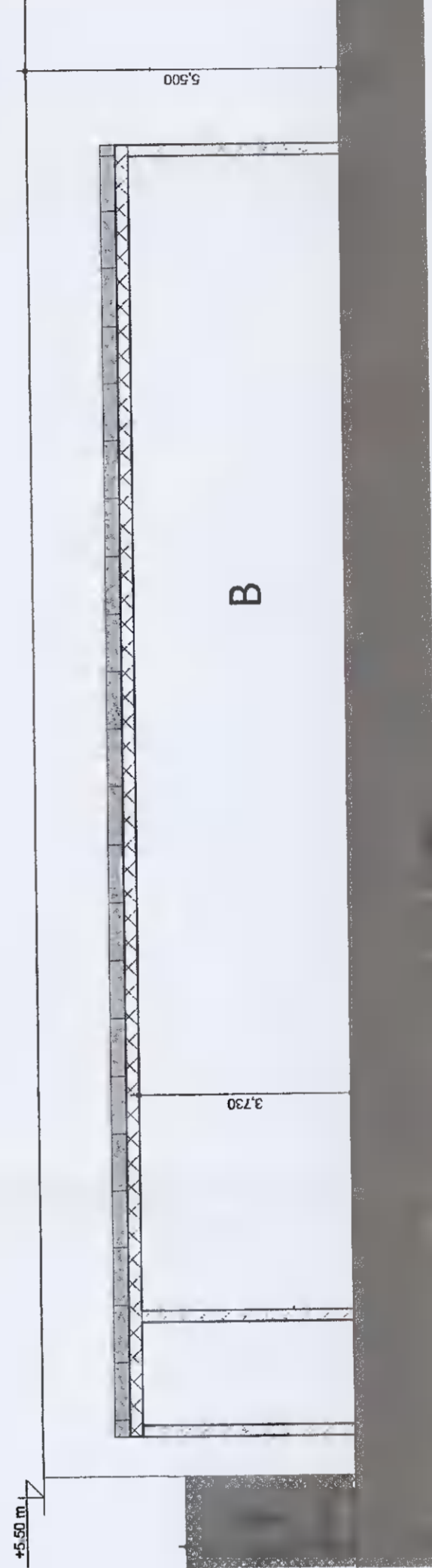
② STEP UP SUBSTATION - SOUTH ELEVATION
1:100



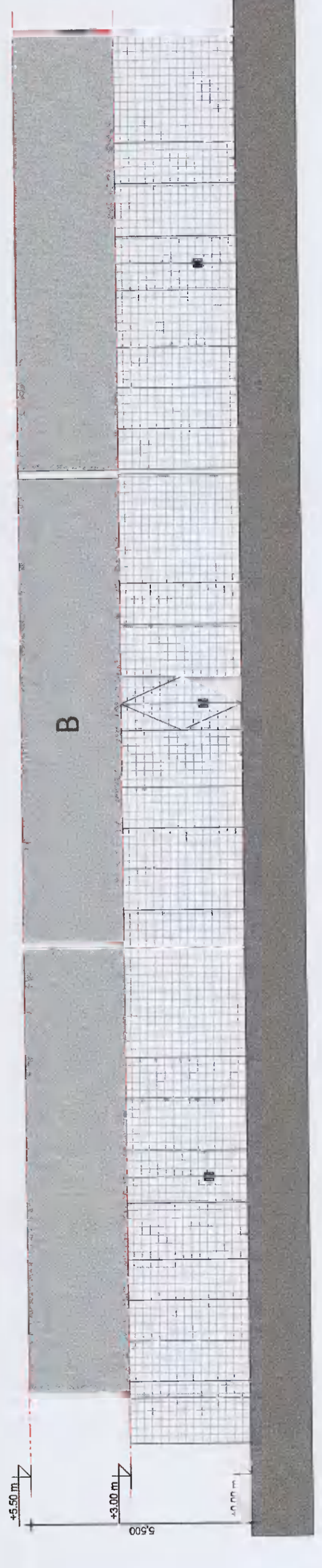
① STEP UP SUBSTATION - NORTH ELEVATION
1:100



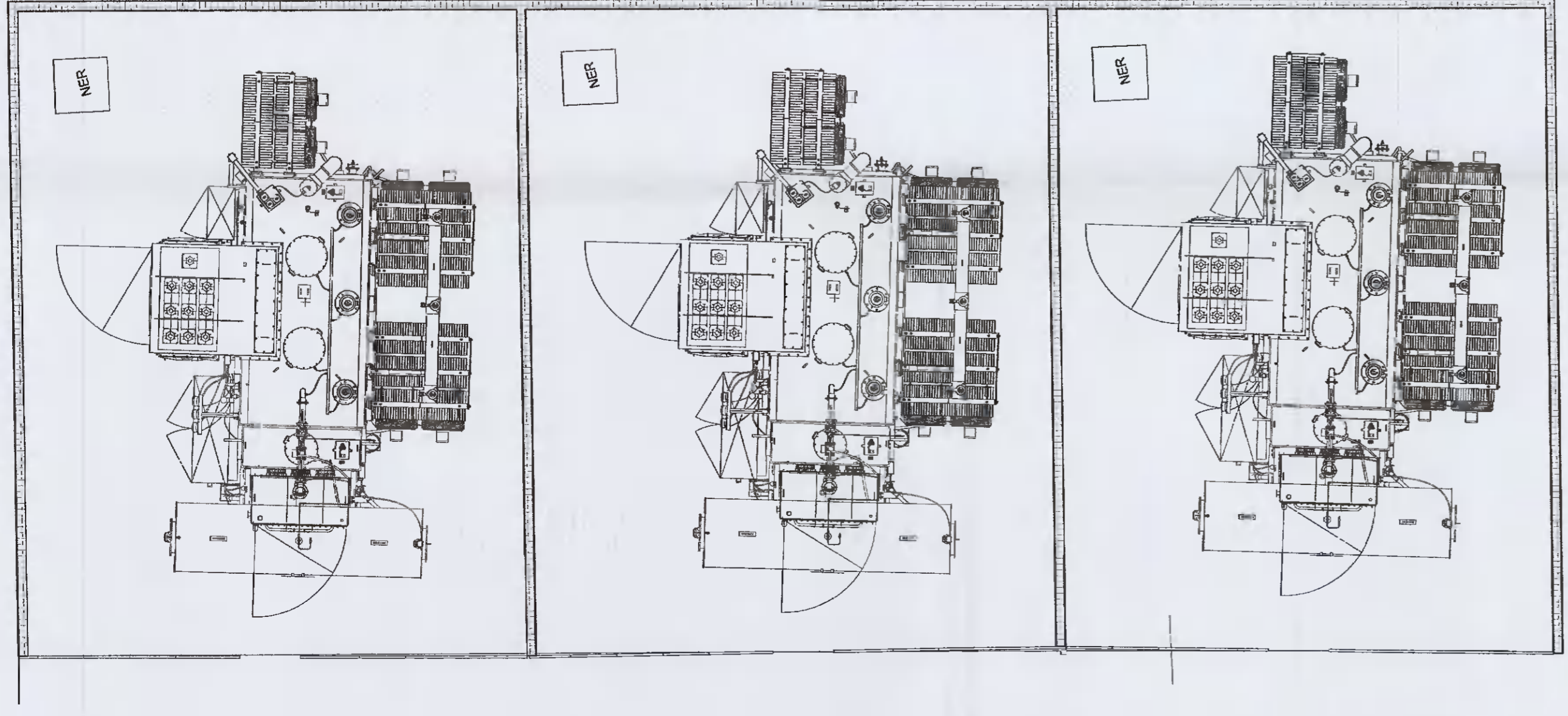
④ STEP UP SUBSTATION - WEST ELEVATION
1:100



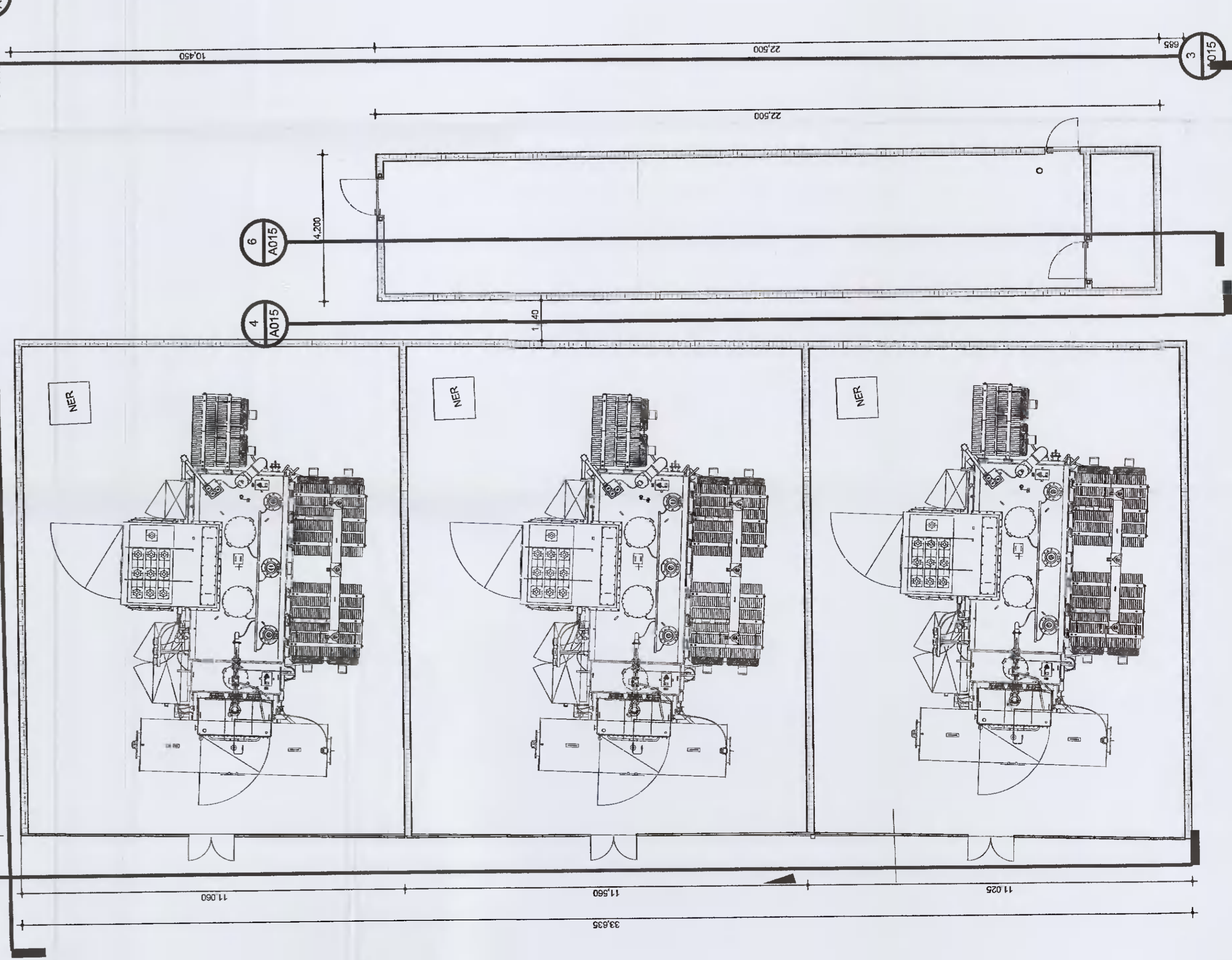
⑤ STEP UP SUBSTATION - SECTION
1:100



⑥ STEP UP SUBSTATION - COMPOUND WEST ELEVATION
1:100



⑦ STEP UP SUBSTATION - ROOF PLAN
1:100



⑧ STEP UP SUBSTATION - PLAN
1:100



VANTAGE DATA CENTERS
 Insurance Engineer
 Project Engineer
 Engineer Name: [Name]
 Date: 03/12/21

BURNS MEDONNELL
 Building & Mechanical
 Project Engineer & Engineer
 Engineer Name: [Name]
 Date: 03/12/21

Hyphen
 Project Engineer & Engineer
 Engineer Name: [Name]
 Date: 03/12/21

Project Details
 Approved by: J. Mulvan
 Checked by: J. Bugbill
 Drawn by: A. Mather

Profile Park, Dublin 22, Ireland
 53°19'1.40"N, 6°28'40.80"W

Project Number: A015

Client: Vantage Data Centers
Project Name: Profile Park, Dublin 22, Ireland
Project Number: A015
Scale: 1:100
Date: 03/12/21
File Name: DUB-DR-ZZ-A015-VL-PL-BMD_V1

PLANNING SUBMITTAL
 NOT FOR
 CONSTRUCTION