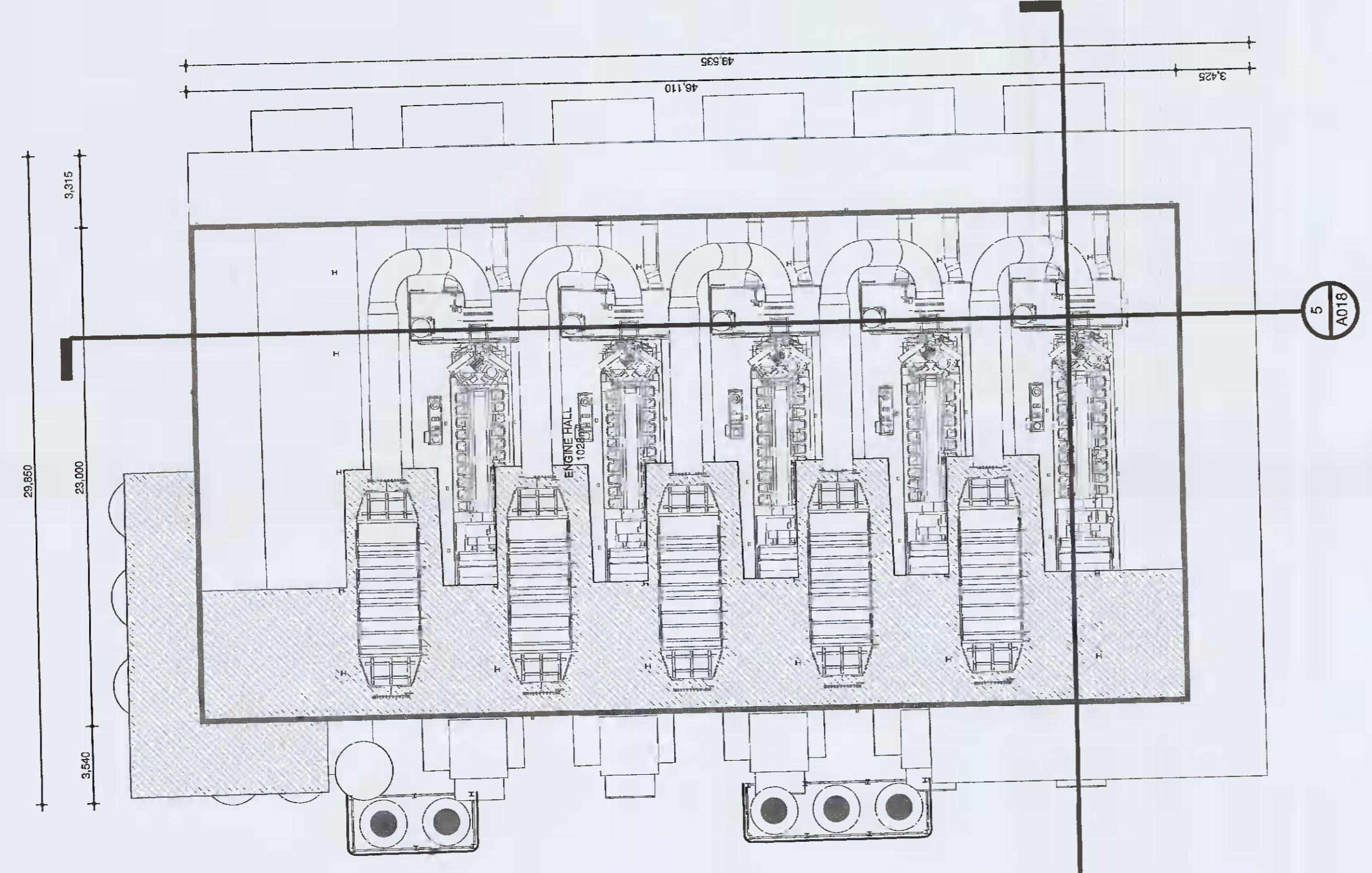
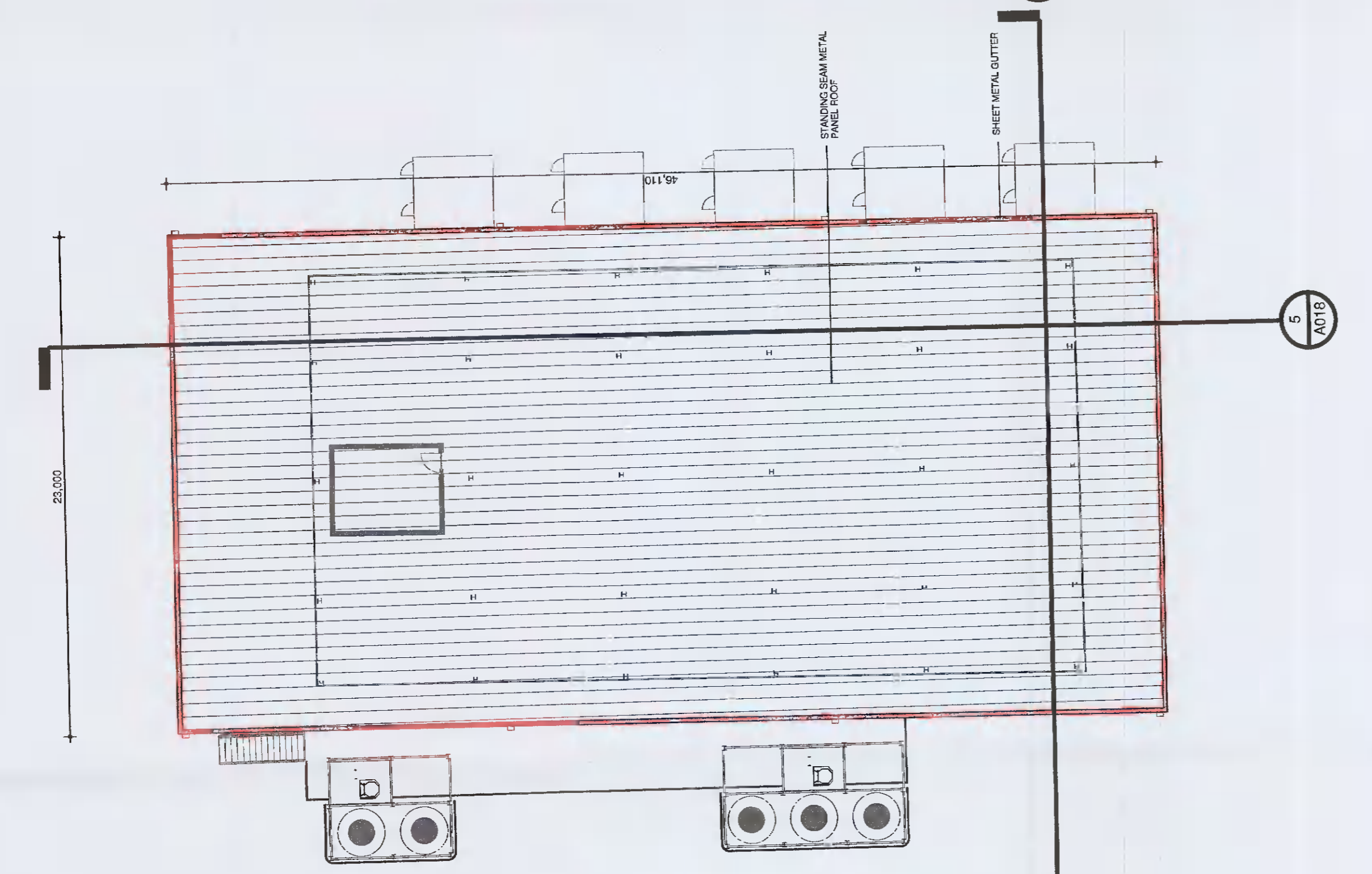


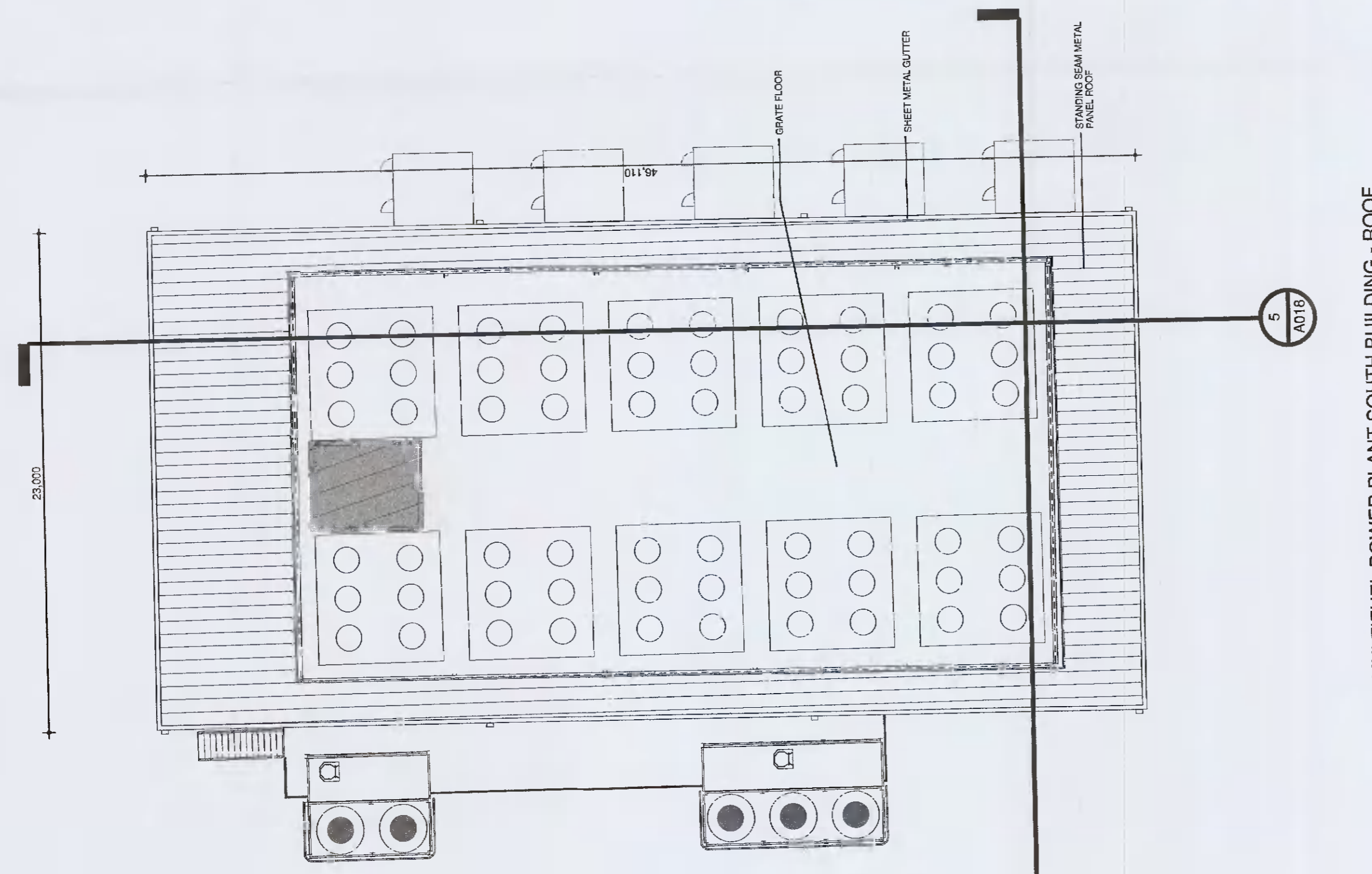
MULTIFUEL POWER PLANT SOUTH BUILDING - GROUND FLOOR PLAN
 1: 200



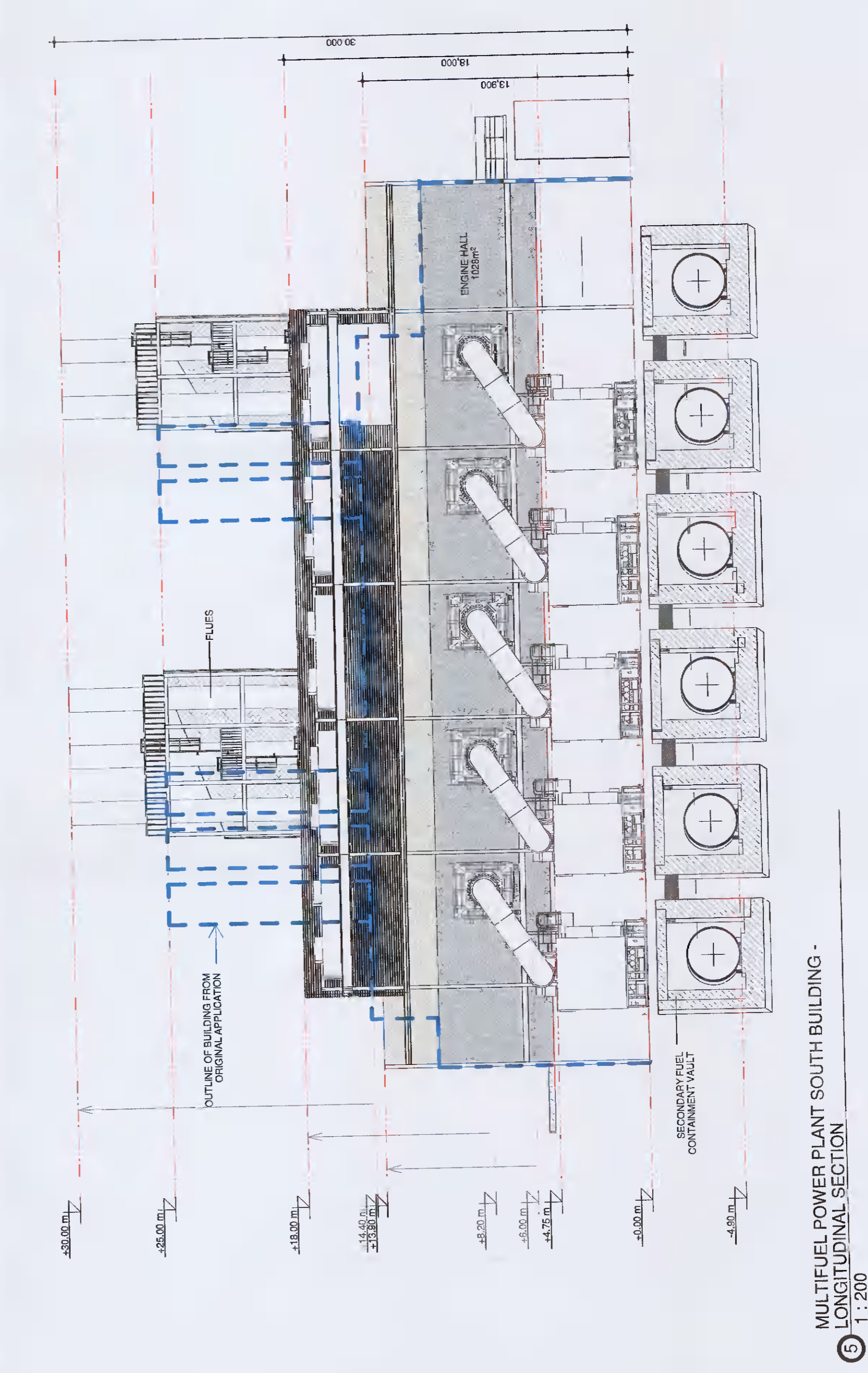
MULTIFUEL POWER PLANT SOUTH BUILDING - MEZZANINE FLOOR PLAN
 1: 200



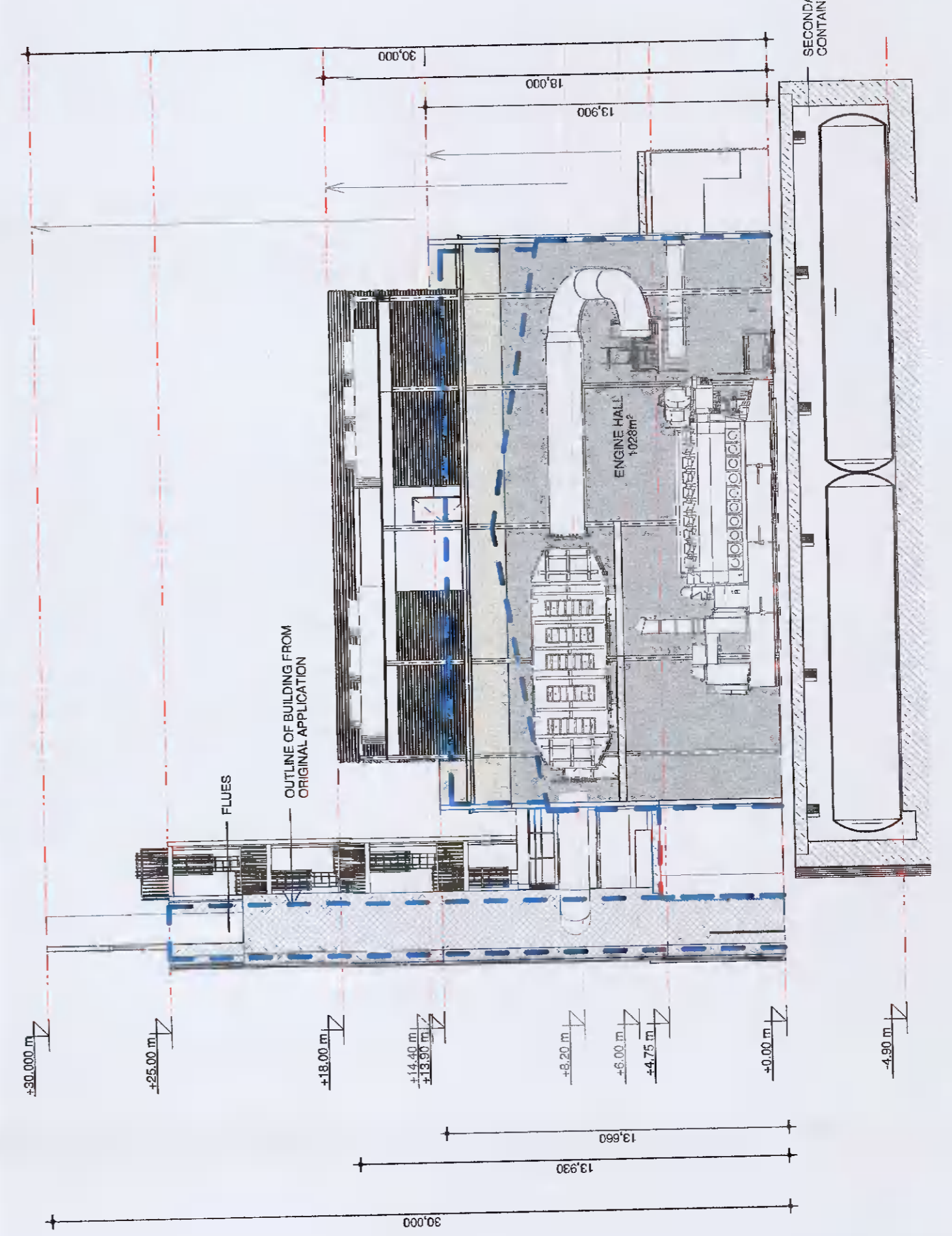
MULTIFUEL POWER PLANT SOUTH BUILDING - ROOF PLAN CHILLER DECK
 1: 200



MULTIFUEL POWER PLANT SOUTH BUILDING - ROOF PLAN
 1: 200



MULTIFUEL POWER PLANT SOUTH BUILDING - LONGITUDINAL SECTION
 1: 200



MULTIFUEL POWER PLANT SOUTH BUILDING - CROSS SECTION
 1: 200

BURNS MEDONNELL 2 Commercial Buildings, 10-12, Lower Esplanade, Dublin 1, Ireland Tel: +353 (0)1 478 2311 www.burnsmcdonnell.com		VANTAGE DATA CENTRES CONSULTANTS 100, Upper Mount Street, Dublin 2, Ireland Tel: +353 (0)1 478 2311 www.vantage.ie	
Project Name: MULTIFUEL POWER PLANT SOUTH BUILDING - SOUTH PLANS AND SECTIONS	Project No: 13/001	Date: 13/06/21	Rev: 01
Project Address: Profile Park, Dublin 22, Ireland 53°19'1.40"N 10°28'40.80"W	Drawing No: A018	Scale: As Shown	File Code: DUB-DR-ZZ-A018-V-PL-BUILD V1
Project Manager: J. Sugrue	Project Engineer: J. Sugrue	Project Designer: J. Sugrue	Project Checker: A. Mather
Project Architect: J. Mather	Project Engineer: J. Sugrue	Project Designer: J. Sugrue	Project Checker: A. Mather

PLANNING SUBMITTAL
 NOT FOR
 CONSTRUCTION