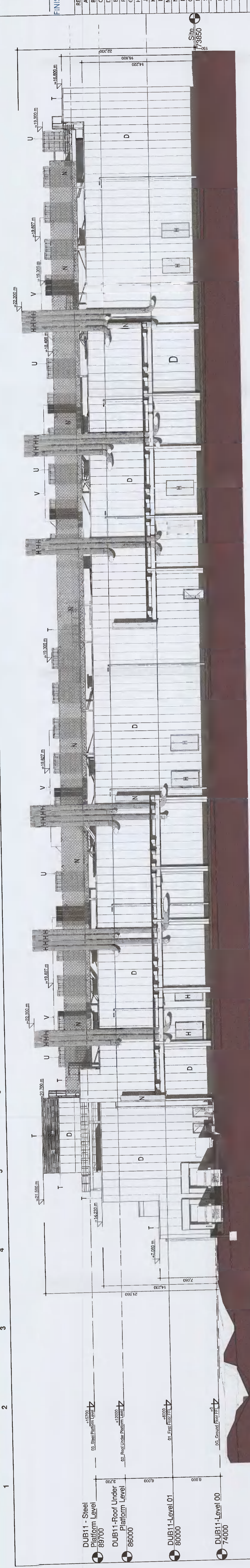


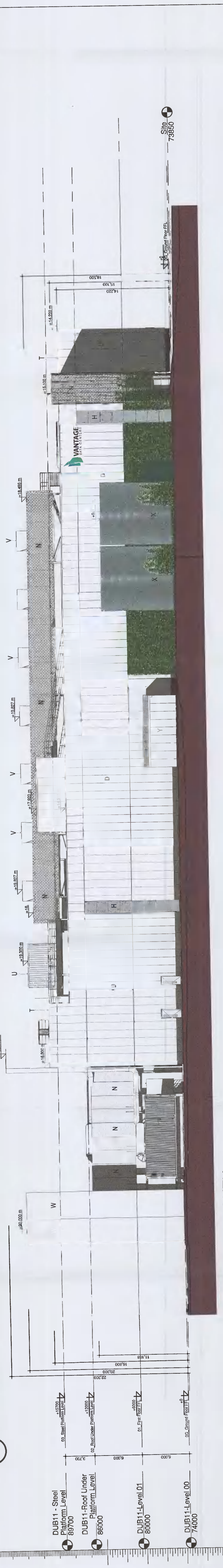
| REF | MATERIAL                                   | COLOUR              | SWATCH |
|-----|--|---------------------|--------|
| A   | Insulated Metal Sandwich Panel Trimform PV | Mass Green RAL 6005 |        |
| B   | Insulated Metal Sandwich Panel Trimform PV | Light Grey RAL 7035 |        |
| C   | Insulated Metal Sandwich Panel Trimform PV | White RAL 9010      |        |
| D   | Insulated Metal Sandwich Panel Trimform PV | White RAL 9010      |        |
| E   | Insulated Metal Sandwich Panel Trimform PV | Agate Grey RAL 7038 |        |
| F   | Insulated Metal Sandwich Panel Trimform PV | Top Grey RAL 7036   |        |
| G   | Insulated Metal Sandwich Panel Trimform PV | Light Grey RAL 7035 |        |
| H   | Aluminum Curtain Wall System Schuco FMS50  | Black RAL 9005      |        |
| I   | Aluminum Curtain Wall System Schuco FMS50  | Blue RAL 5017       |        |
| J   | Aluminum Curtain Wall System Schuco FMS50  | White RAL 9010      |        |
| K   | Security Fence                             | Black RAL 9005      |        |
| L   | Security Fence                             | White RAL 9010      |        |
| M   | Recessed cassette cladding (Cobogran)      | White RAL 9010      |        |
| N   | Recessed cassette cladding (Cobogran)      | Light Grey RAL 7035 |        |
| O   | Recessed cassette cladding (Cobogran)      | Grey RAL 7031       |        |
| P   | Gloss paint on electroweld                 | White RAL 9010      |        |
| Q   | Gloss paint on electroweld                 | Grey RAL 7031       |        |
| R   | Galvanized steel                           | White RAL 9010      |        |
| S   | Power-coated metal louvers                 | White RAL 9010      |        |
| T   | Power-coated metal louvers                 | White RAL 9010      |        |
| U   | Power-coated metal louvers                 | White RAL 9010      |        |
| V   | Power-coated metal louvers                 | White RAL 9010      |        |
| W   | Power-coated metal louvers                 | White RAL 9010      |        |
| X   | Power-coated metal louvers                 | White RAL 9010      |        |
| Y   | Power-coated metal louvers                 | White RAL 9010      |        |
| Z   | Power-coated metal louvers                 | White RAL 9010      |        |



5 DUB11 BUILDING ELEVATION - WEST  
SCALE: 1:200



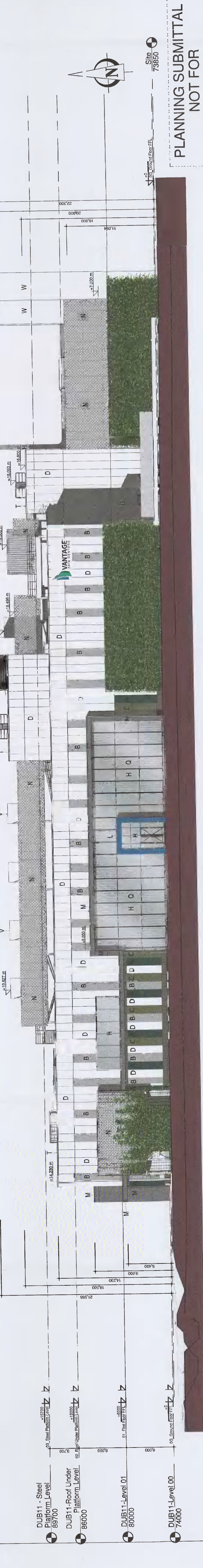
4 DUB11 BUILDING ELEVATION - WEST II - WITH GENERATORS  
SCALE: 1:200



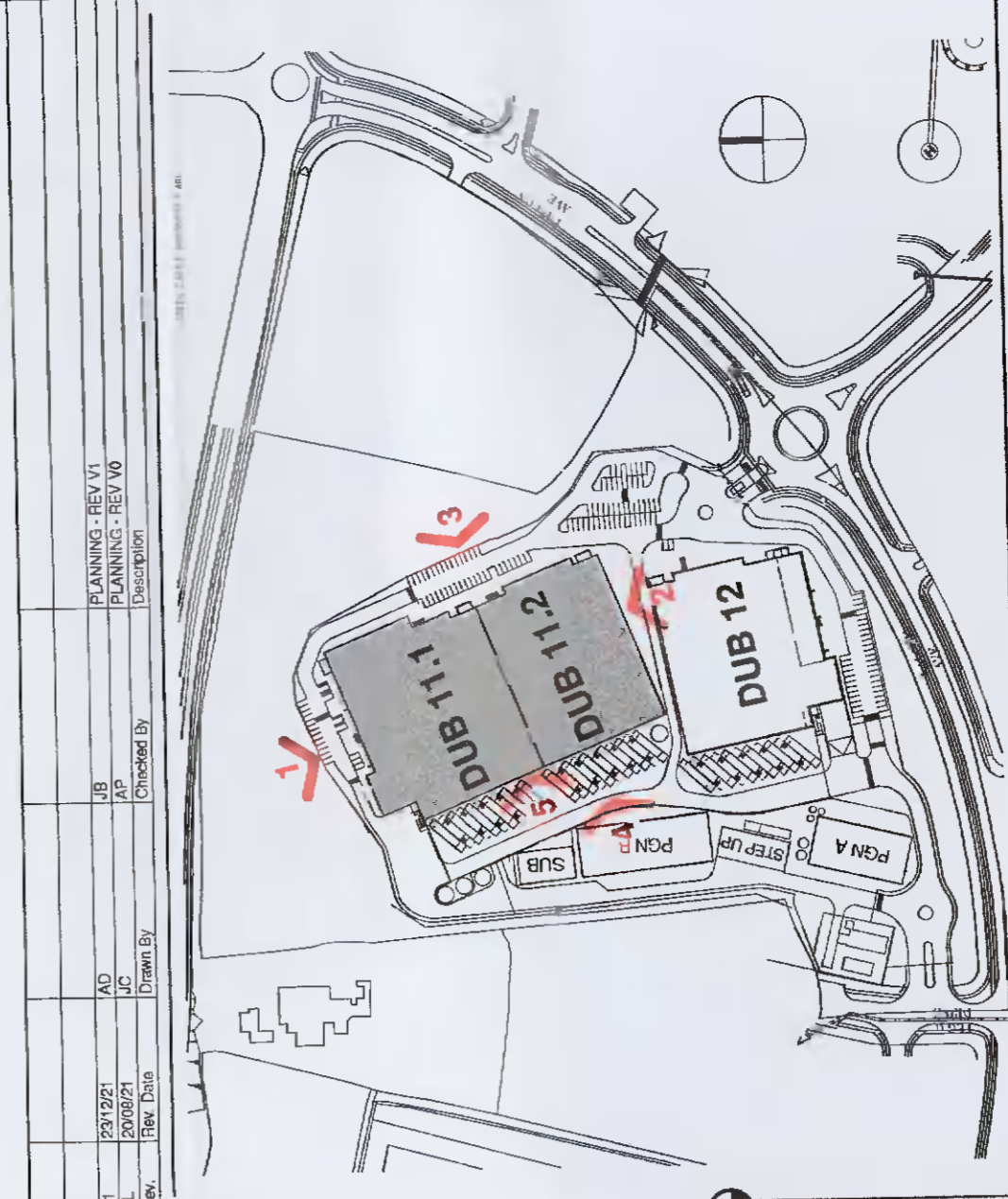
3 DUB11 BUILDING ELEVATION - SOUTH  
SCALE: 1:200



2 DUB11 BUILDING ELEVATION - EAST  
SCALE: 1:200



DUB11 BUILDING ELEVATION - NORTH



**VANTAGE**  
DATA CENTRES

**BURNS MEDONNELL**  
ARCHITECTS

**Hyphen**  
ARCHITECTS

Project Name: DUB11 - DATA CENTRE  
Site: DUB11-DR-00-A200-00-PL-BMD V1  
Scale: 1:200  
Date: 23/10/21  
Author: J. Murphy  
Checked By: J. Murphy  
Drawn By: A. Dabrowski

Project Location: Profile Park, Dublin 22, Ireland  
53°19'1.40"N, 6°26'40.80"W

Sheet Number: **A200**

PLANNING SUBMITTAL  
NOT FOR  
CONSTRUCTION