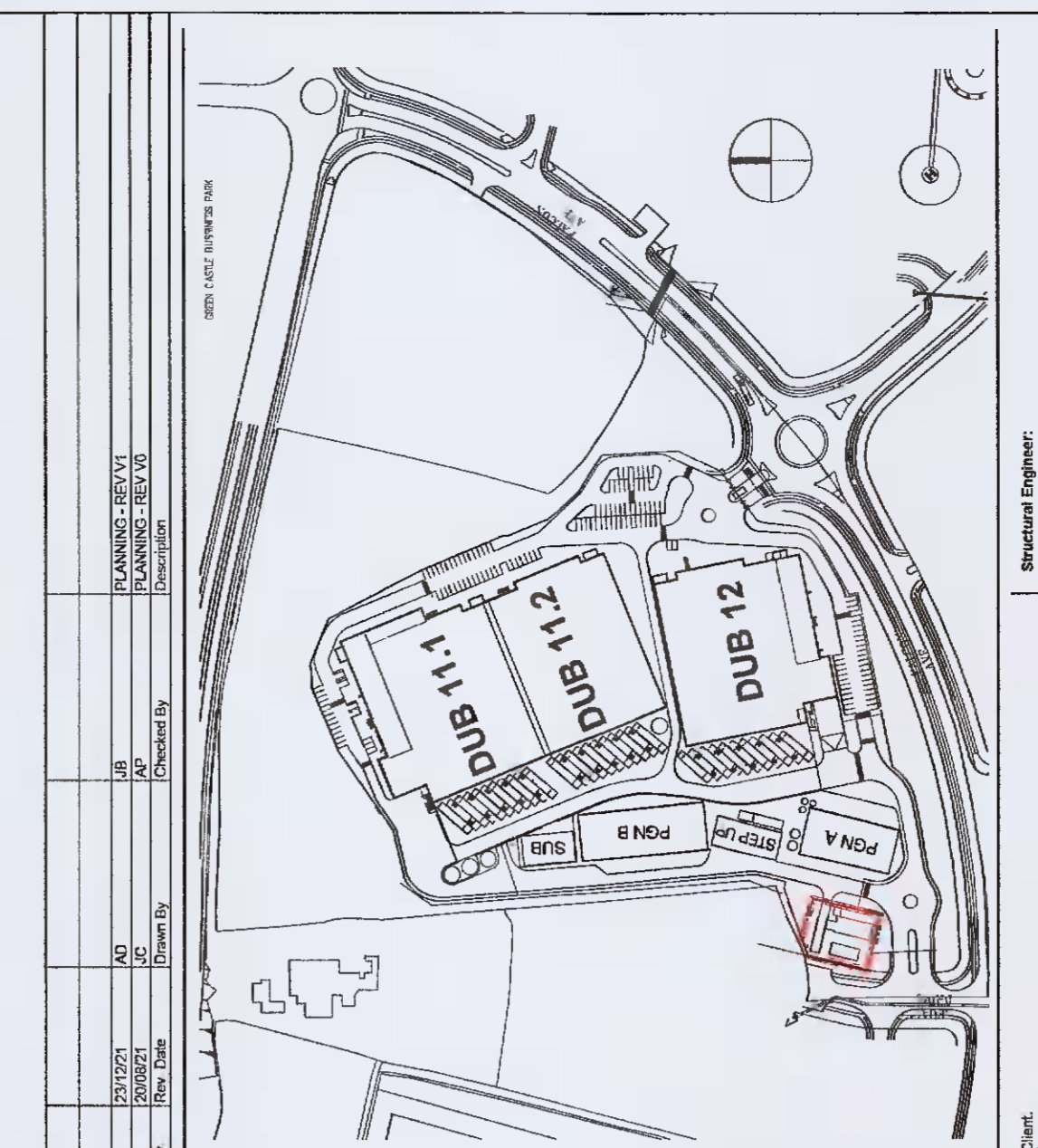
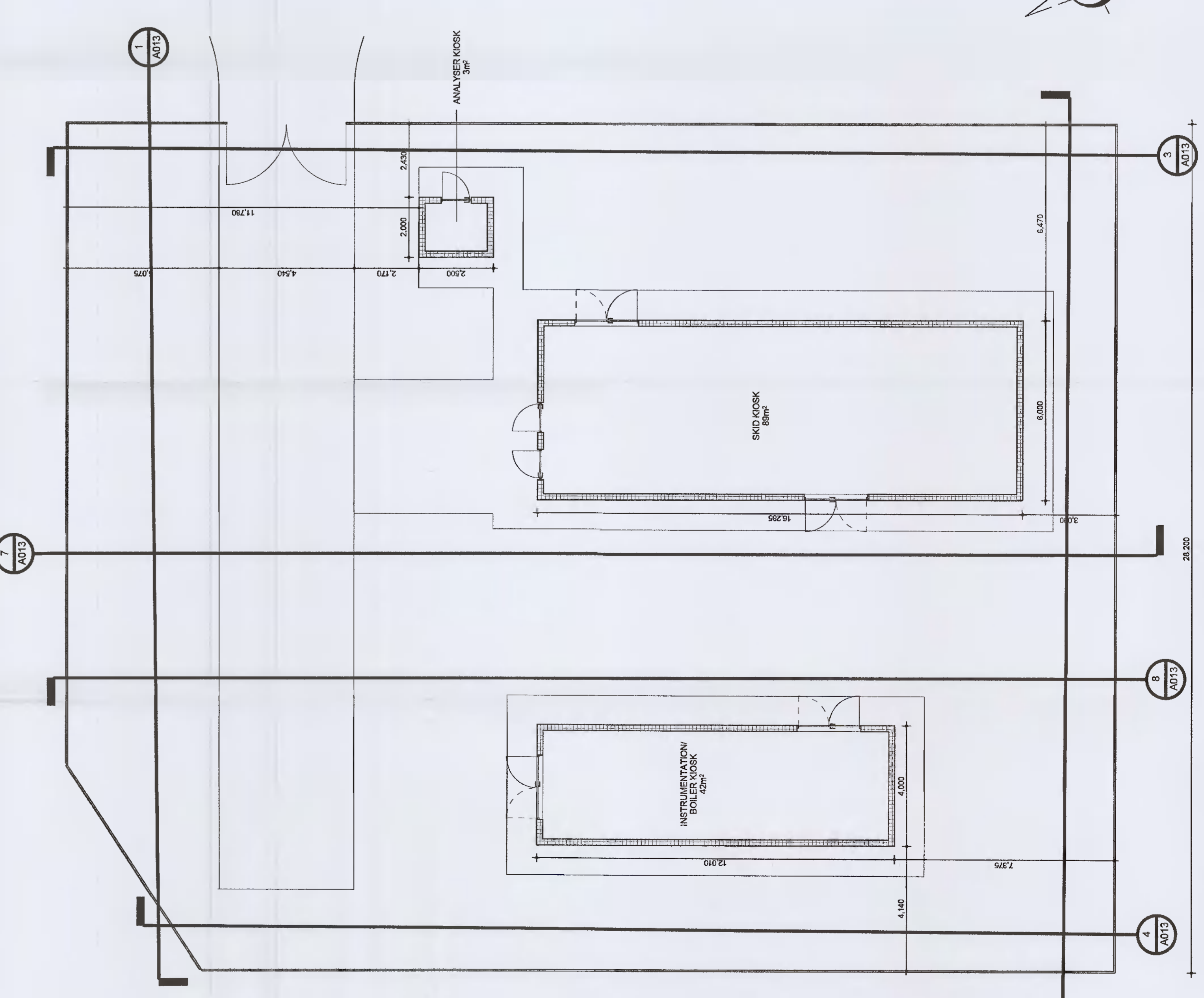
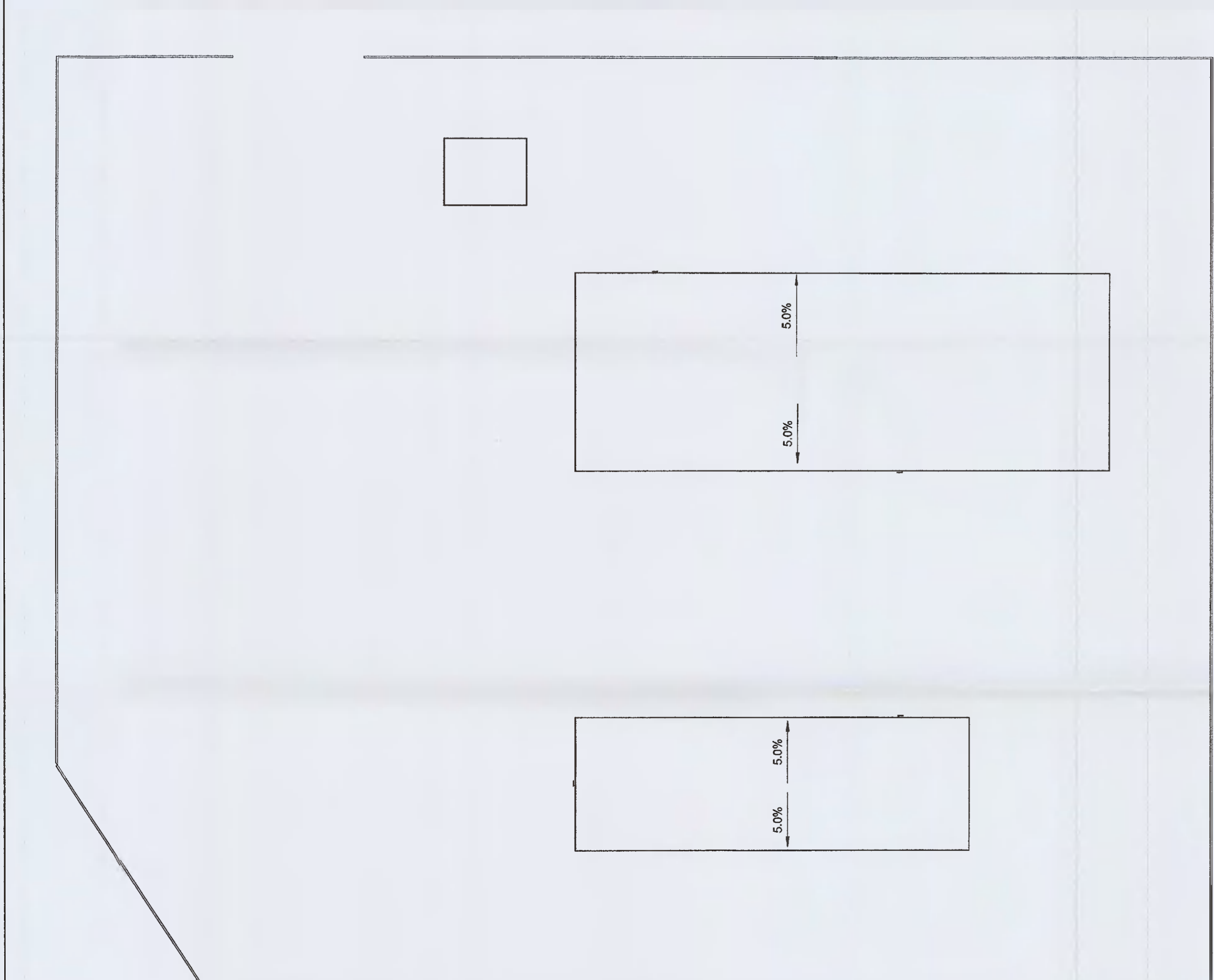
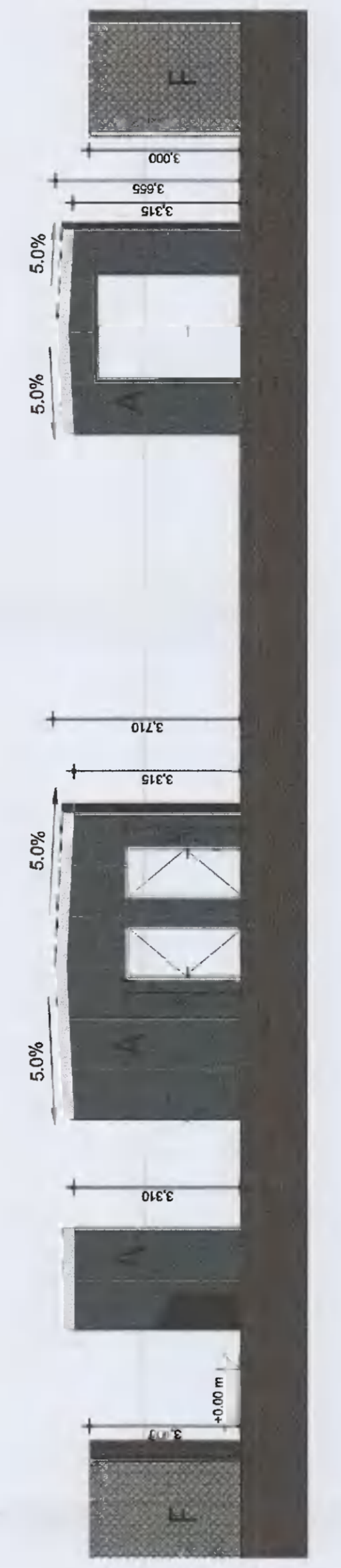
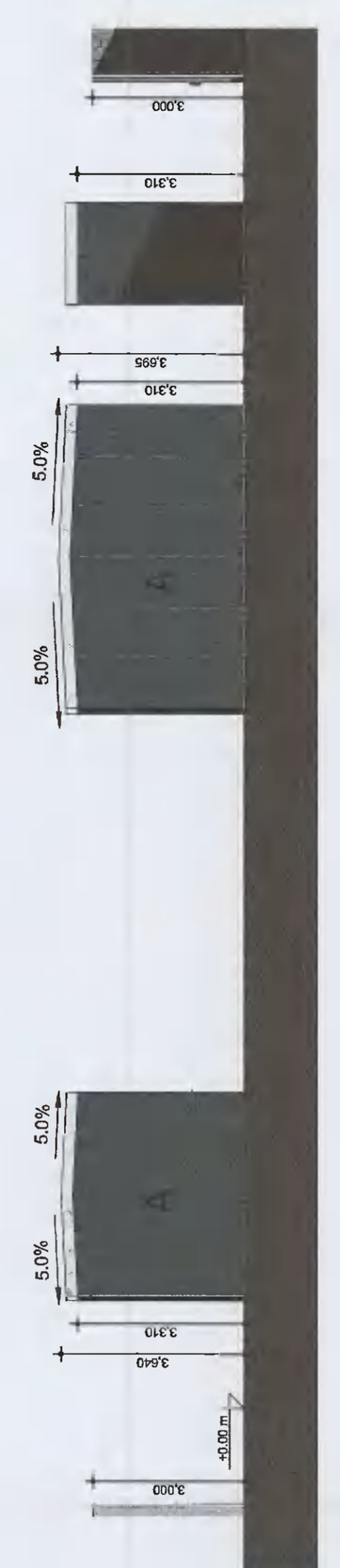
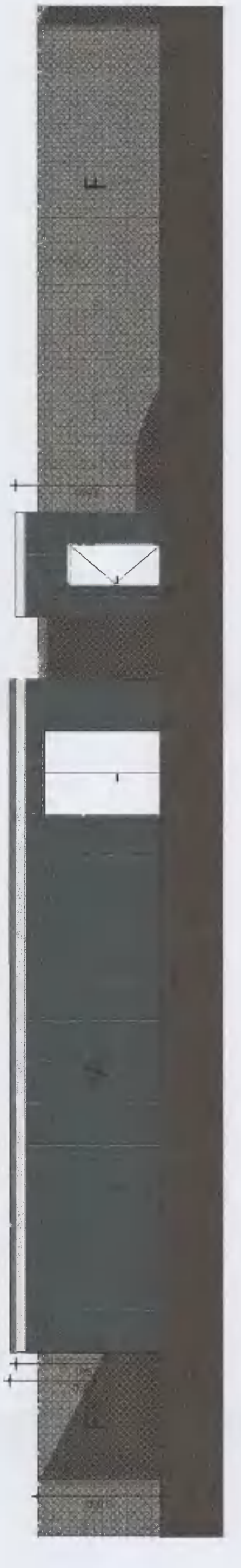


www.burnsmmed.com/location/dublinhigham
www.burnsmmed.com/engines

2 Conrad St, Broomfield B1 3JL, United Kingdom
Telephone: 01474 57 23 283

FINISHES KEY

REF	MATERIAL	COLOUR	SWATCH
A	Insulated Metal Sandwich Panel Trimoderm TV	Light Grey RAL 7035	SWATCH
B	Insulated Metal Sandwich Panel Trimoderm TV	Light Grey RAL 7035	
C	Insulated Metal Sandwich Panel Trimoderm TV	Rossie Green RAL 6011	
D	Insulated Metal Sandwich Panel Trimoderm TV	Black RAL 9005	
E	Insulated Metal Sandwich Panel Trimoderm TV	Asak Grey RAL 7038	
F	Insulated Metal Sandwich Panel Trimoderm TV	Tide Grey RAL 7046	
G	Insulated Metal Sandwich Panel Trimoderm TV	Ashwelle RAL 7046	
H	Insulated Metal Sandwich Panel Trimoderm TV	Black RAL 9005	
I	Powder-coated window framing	Black RAL 9005	
J	Security fence	Moss Green RAL 6005	
K	Blank screen cassette cladding Klipspring	Blue RAL 5037	
L	Blank screen cassette cladding Klipspring	Light Grey RAL 7035	
M	Powder-coated metal screen	Light Grey RAL 7035	
N	Powder-coated metal screen	Yellow RAL 1018	
P	Glass panel on aluminium	Grey tint	
Q	Solar control glazing	Tinted High	
S	Solar control glazing	NA	
		NA	
		NA	



VANTAGE
DATA CENTRES

BURNS MEDONNELL
Architects/Engineers

Hyphen
Architects

Project Name: Profile Park, Dublin 22, Ireland
53°19'1.40"N, 6°26'40.80"W

Project No: A013
Scale: 1:100
Date: 08/12/21
Permit No: DUB11-DR-SP-A013-VI-PL-BWD V1

Prepared by: J. Bugallo Scibio
Checked by: J. Mulvan
Drawn by: A. Mulvan

Project Address:
 Burnham & McConnell
 Hyphen
 Unit 11, 11.1 & 11.2
 Profile Park
 Dublin 22, Ireland