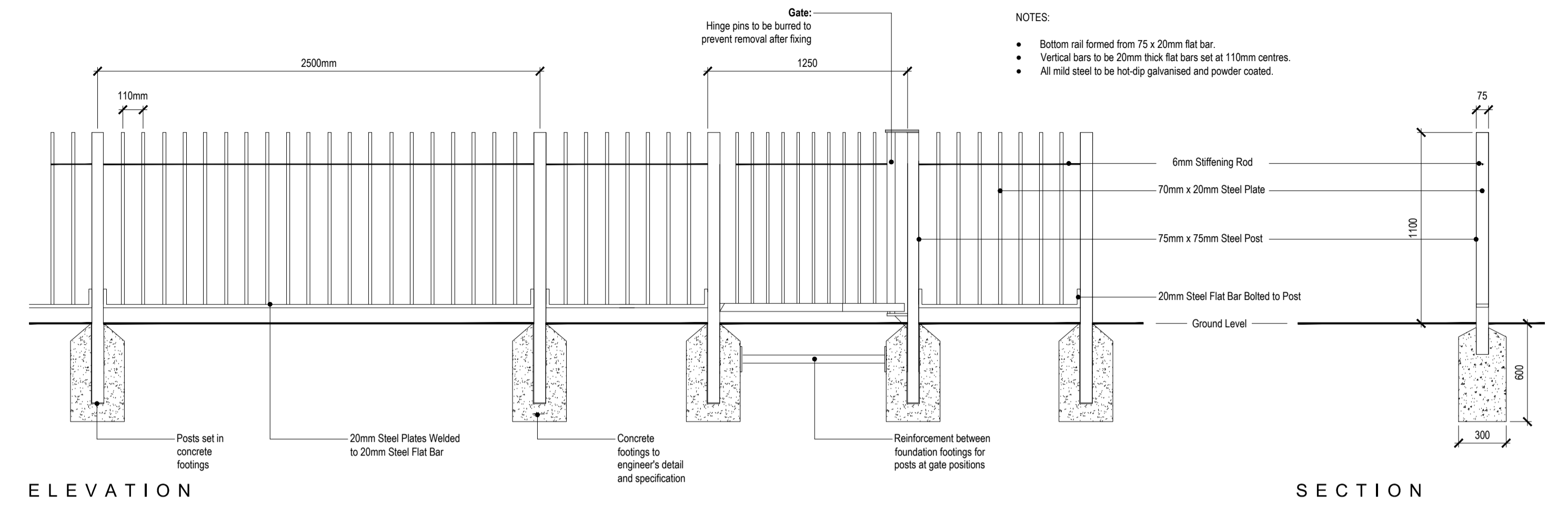


ELEVATION

SECTION

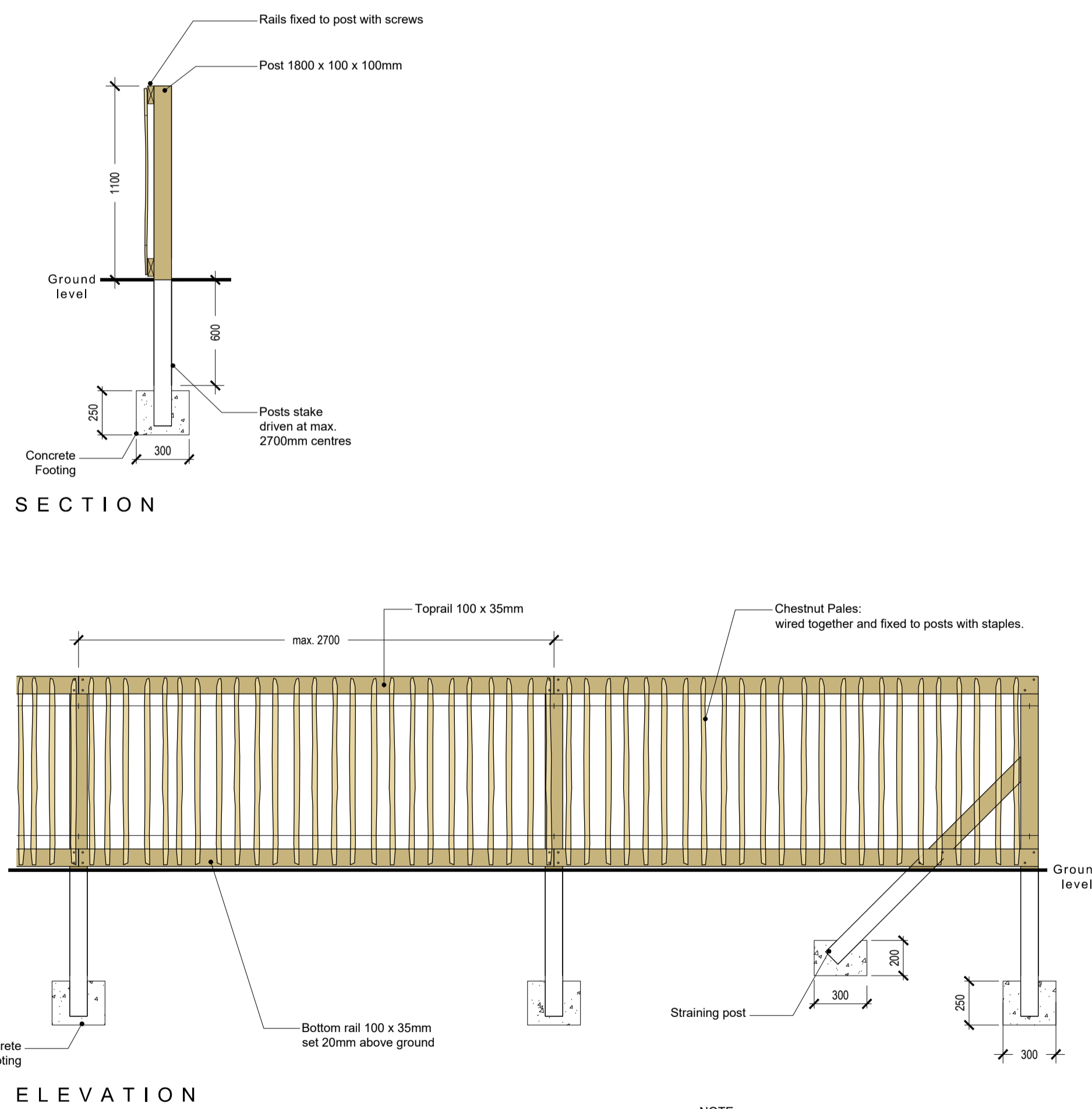
01 Detail of Proposed 1.2m High Timber Post & Rail Fence  
252 scale 1:25



ELEVATION

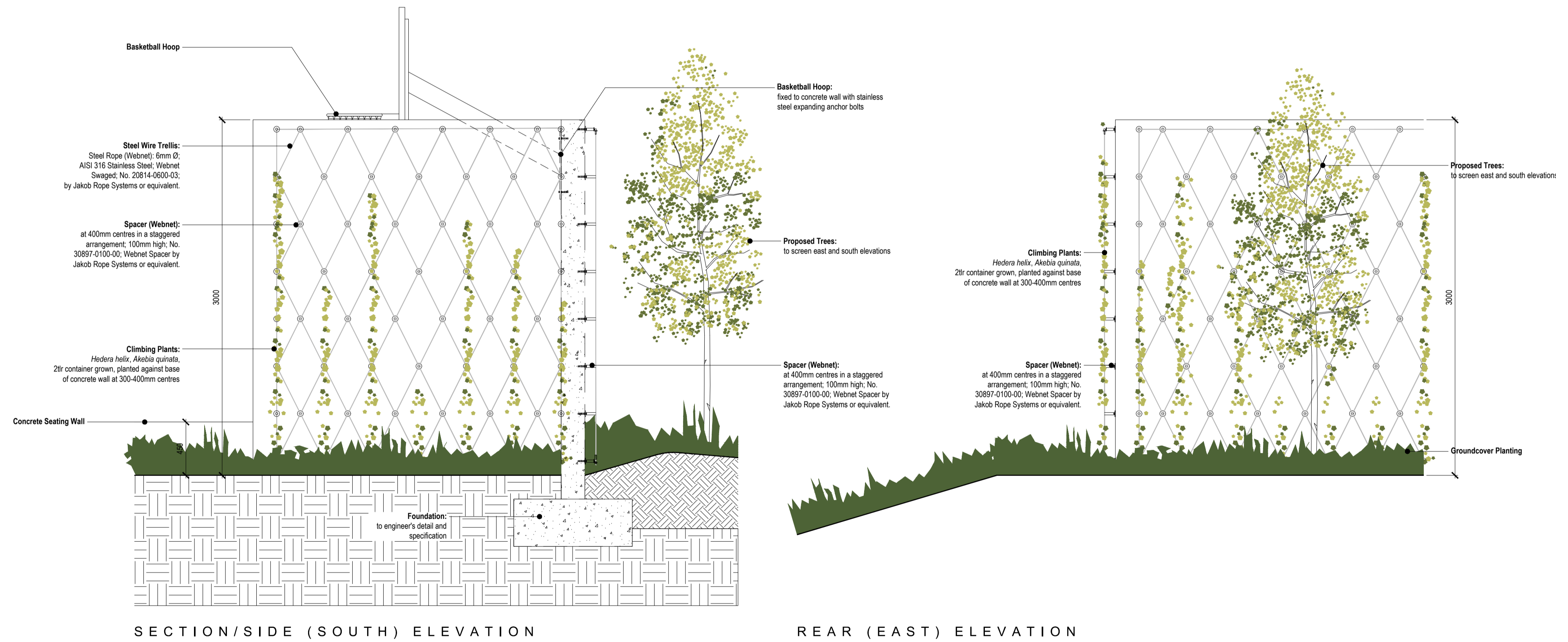
SECTION

03 Detail of Proposed 1.1m High Metal Railing  
252 scale 1:25



ELEVATION

02 Detail of 1.1 metre Chestnut Pale fence  
252 scale 1:25



SECTION/SIDE (SOUTH) ELEVATION

REAR (EAST) ELEVATION

04 Detail of Proposed Concrete Ball Wall (3.0m High with Stainless Steel Trellis to Support Climbers)  
252 scale 1:25

This drawing is the copyright of ait urbanism + landscape. Unless otherwise stated all dimensions are in millimetres. Where dimensions are not given, drawings must not be scaled and the matter must be referred to the Landscape Architect. If the drawing includes conflicting details/dimensions the matter must be referred to the Landscape Architect. All dimensions must be checked on site. The Landscape Architect must be informed, by the Contractor, of any discrepancies before work proceeds.

DATE	REV	DESCRIPTION	DRAWN BY	CHECKED BY
-	-	-	-	-
-	-	-	-	-
-	-	-	-	-
-	-	-	-	-

**NOTES:**

<b>ait</b> urbanism + landscape 3rd Floor Newmarket House Newmarket Square, Dunelm Inverclyde Glasgow t + 303 36 179522 www.aitgb.co.uk	<b>ISSUE STATUS:</b> PLANNING DRAWING NO: 20SD02-DR-252 REVISION: -	
	CLIENT: BCDK Holdings Ltd. & Coll Avon Ltd. PROJECT: Edmondstown SHD DRAWING: Boundary Details 3	DRAWN BY: LM PROJECT NO: 20SD02 SCALE: 1:25 SHEET SIZE: A1 CHECKED BY: RJ