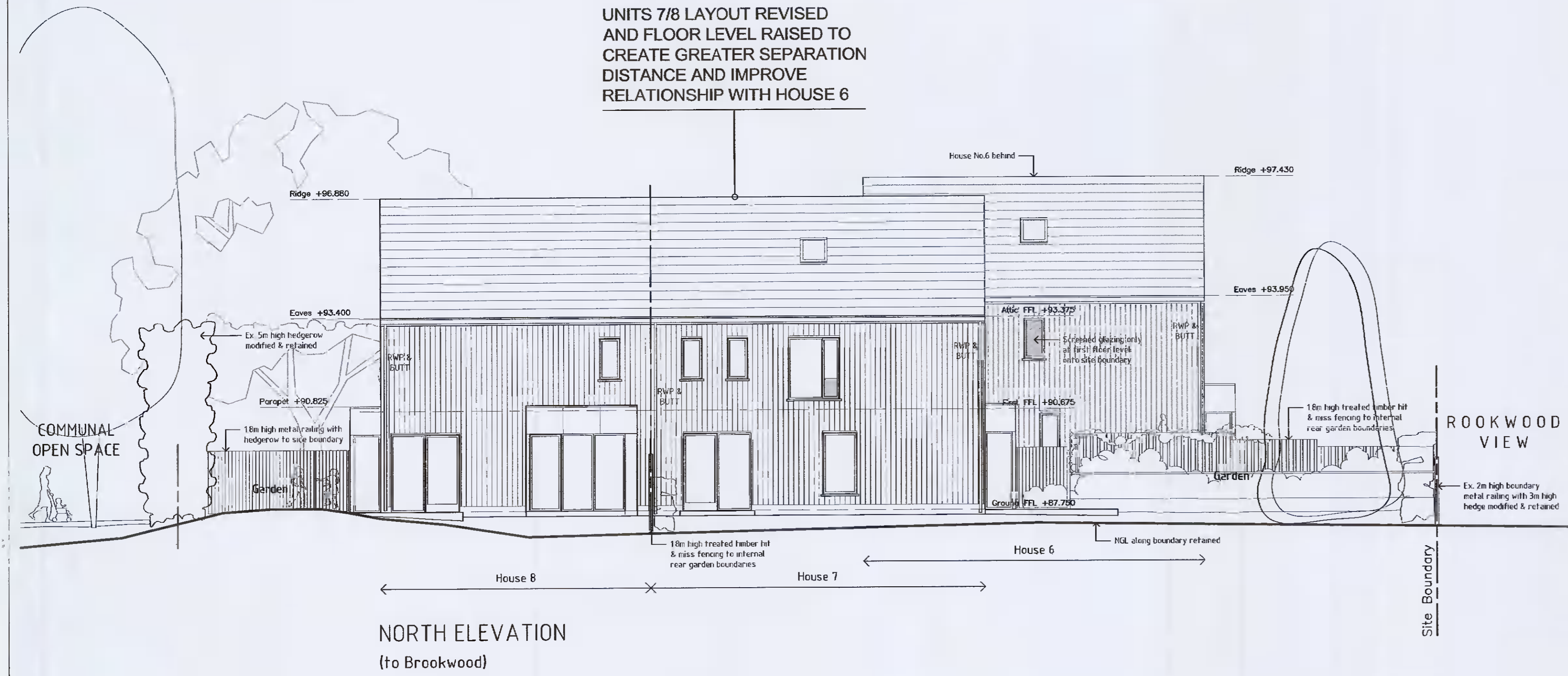


- NOTES:
1. This drawing is copyright and may only be reproduced with the architect's permission.
 2. Do not scale.
 3. Only written dimensions.
 4. Drawings to be read in conjunction with civil/structural engineer, landscape architect and other consultant drawings, details and specifications.
 5. ADDITIONAL INFORMATION RESPONSES SHOWN IN UNDERLINED CAPITAL LETTERS

UNITS 7/8 LAYOUT REVISED AND FLOOR LEVEL RAISED TO CREATE GREATER SEPARATION DISTANCE AND IMPROVE RELATIONSHIP WITH HOUSE 6



EXTERNAL MATERIALS

ROOF CONSTRUCTION:

- Dark grey natural/fibre-cement slates
- Solar panels
- Double-glazed metal/timber rooflights
- Powder-coated metal rainwater goods

EXTERNAL WALL CONSTRUCTION:

- Factory-finished stained timber rainscreen cladding on timber frame structure
- Metal cladding to bay window parapets
- Pressed metal cladding to entrance canopies

WINDOWS & DOOR SCREENS:

- Composite powder-coated aluclad timber or solid timber glazing system with low-E triple-glazing. Glass balustrades to full-height opening screens. Pressed aluminium cills
- Metal surround to gable feature window

EXTERNAL WORKS:

- Permeable paving to private terraces and pathways
- 1.8m high metal railings with hedgerow to front & side boundaries
- 1.8m high treated timber hit & miss fencing to internal rear garden boundaries

Rev.	Date	Dn.	Details

DRAWING PLOTTED ON:

Client:

BRENDA WEIR

Fionnuala Rogerson Architects

Ardara House Lower Churchtown Rd. Dublin 14
Telephone: (01) 2984261
E-mail: info@rogerson.ie



Project Title:

Proposed Residential Development at Rookwood, Stocking Lane, Ballyboden, Dublin 16, D16 N5P3

Drawing Title:

General Arrangement House Nos.6-8 (Woodland Houses) North & East Elevations

Drawing Status:

PLANNING - ADDITIONAL INFORMATION

Scales: 1:100 @ A1

Date	Approved by:	Dn.	NG
March 2022			
Project No.	Drawing No.	Ch.	Rev.
1833	PA-017(4)		