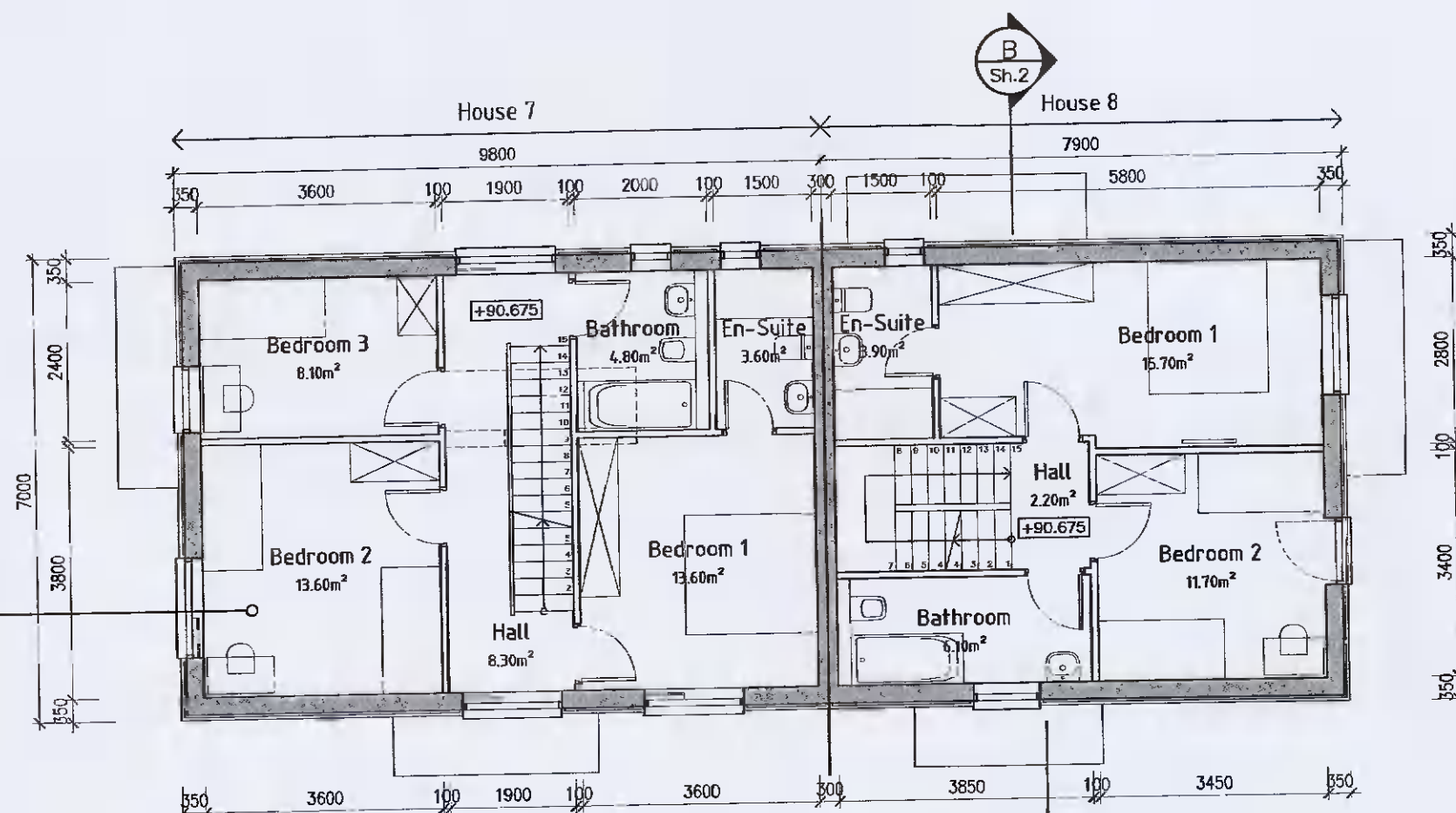
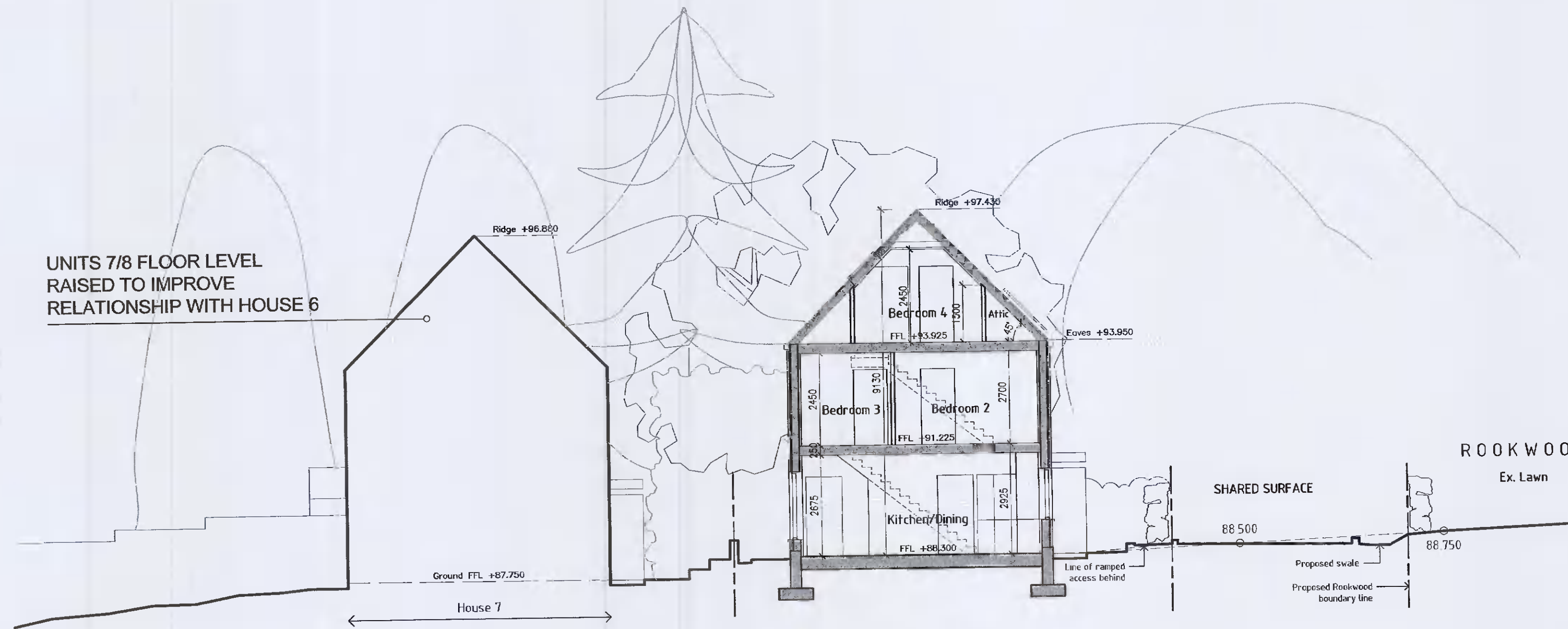


UNITS 7/8 FLOOR LEVEL
RAISED TO IMPROVE
RELATIONSHIP WITH HOUSE 6



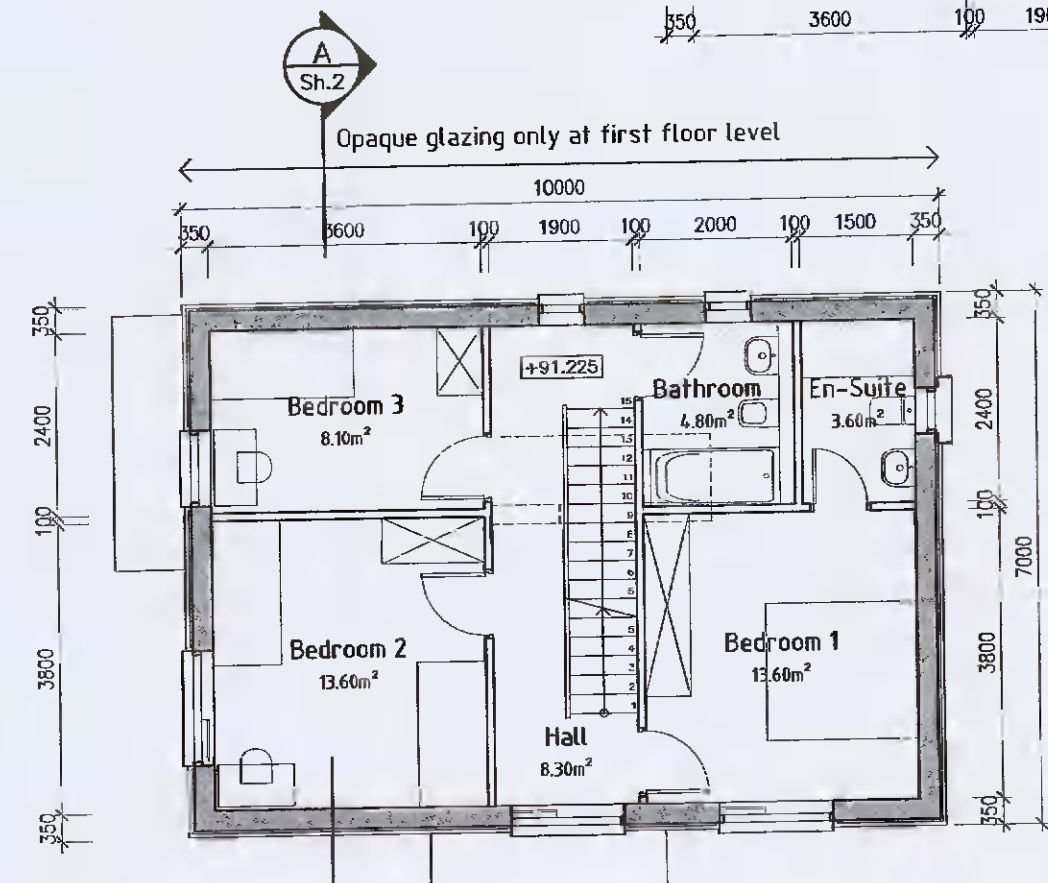
FIRST FLOOR PLAN (Unit 7/8)

UNITS 7/8 FLOOR LEVEL
RAISED TO IMPROVE
RELATIONSHIP WITH HOUSE 6



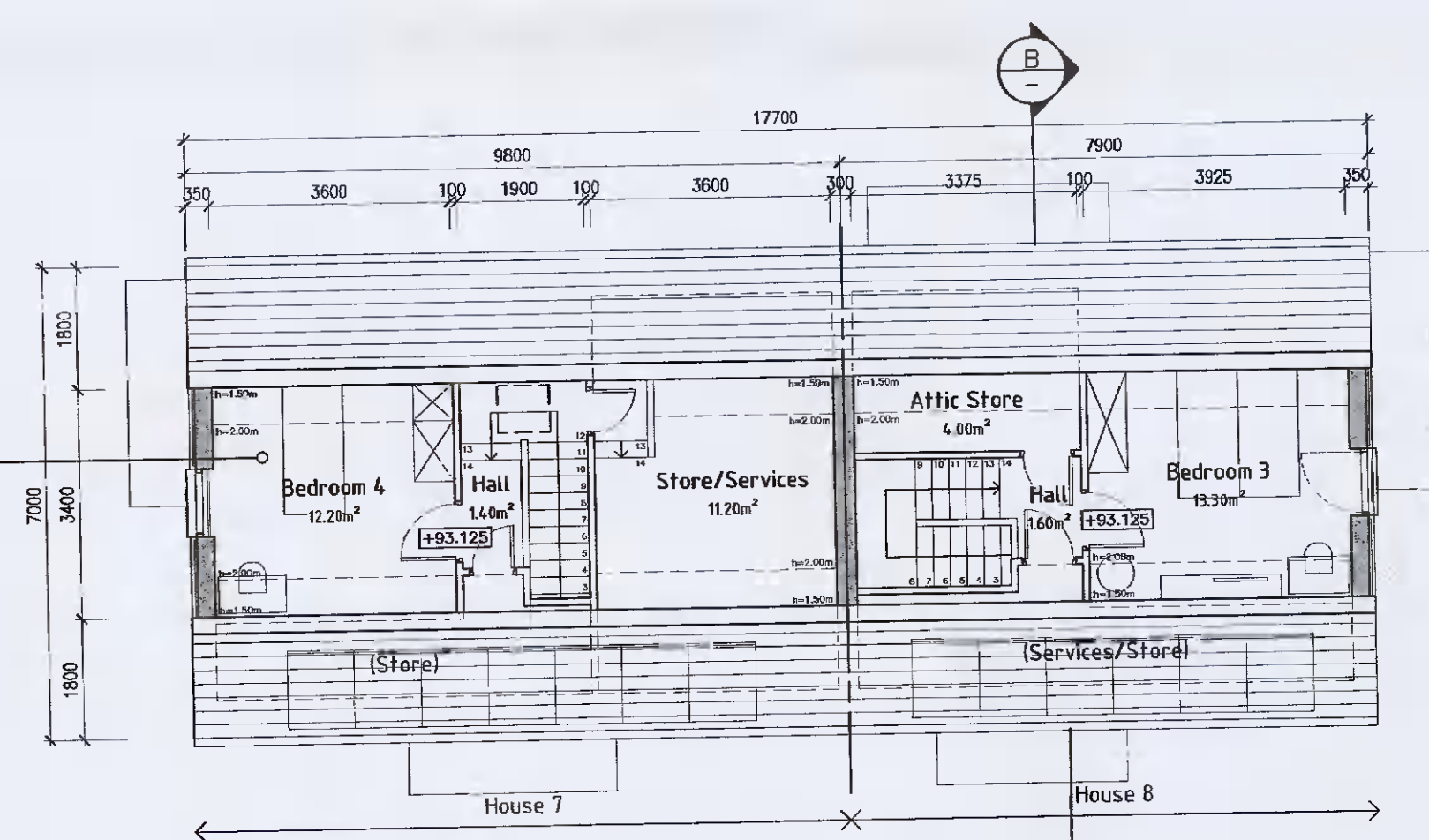
CROSS-SECTION A-A (Unit 6)

UNITS 7/8 FLOOR LEVEL
RAISED TO IMPROVE
RELATIONSHIP WITH HOUSE 6



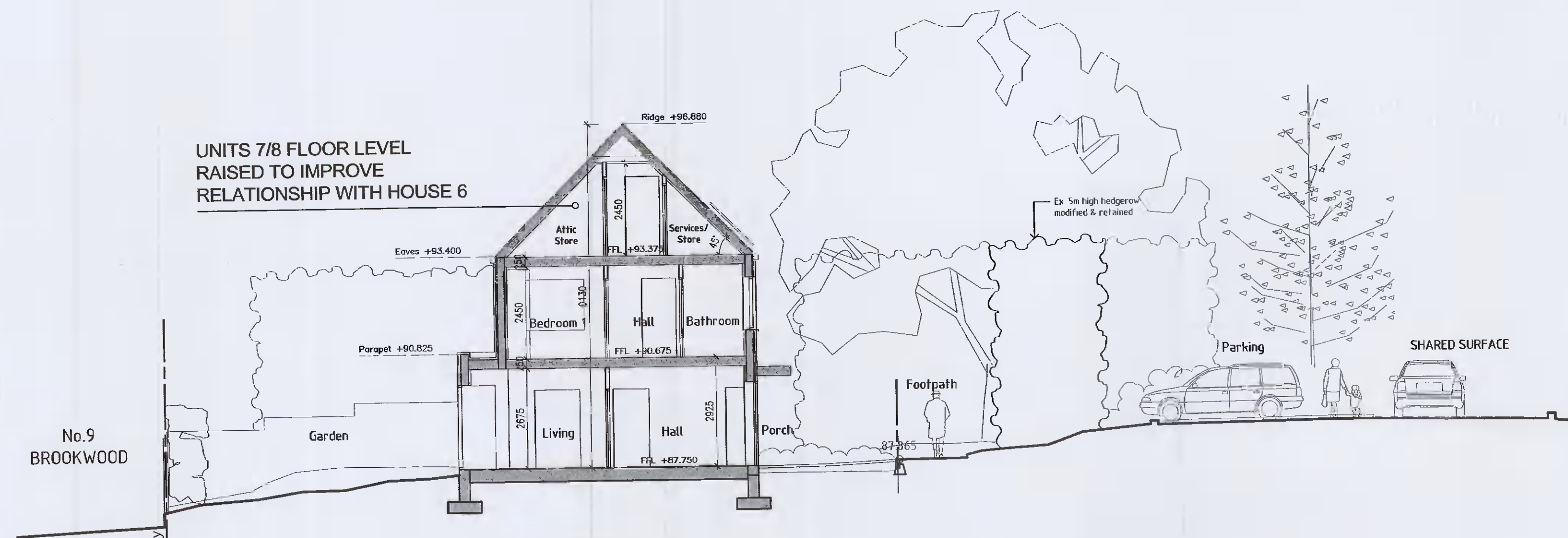
FIRST FLOOR PLAN (Unit 6)

UNITS 7/8 FLOOR LEVEL
RAISED TO IMPROVE
RELATIONSHIP WITH HOUSE 6



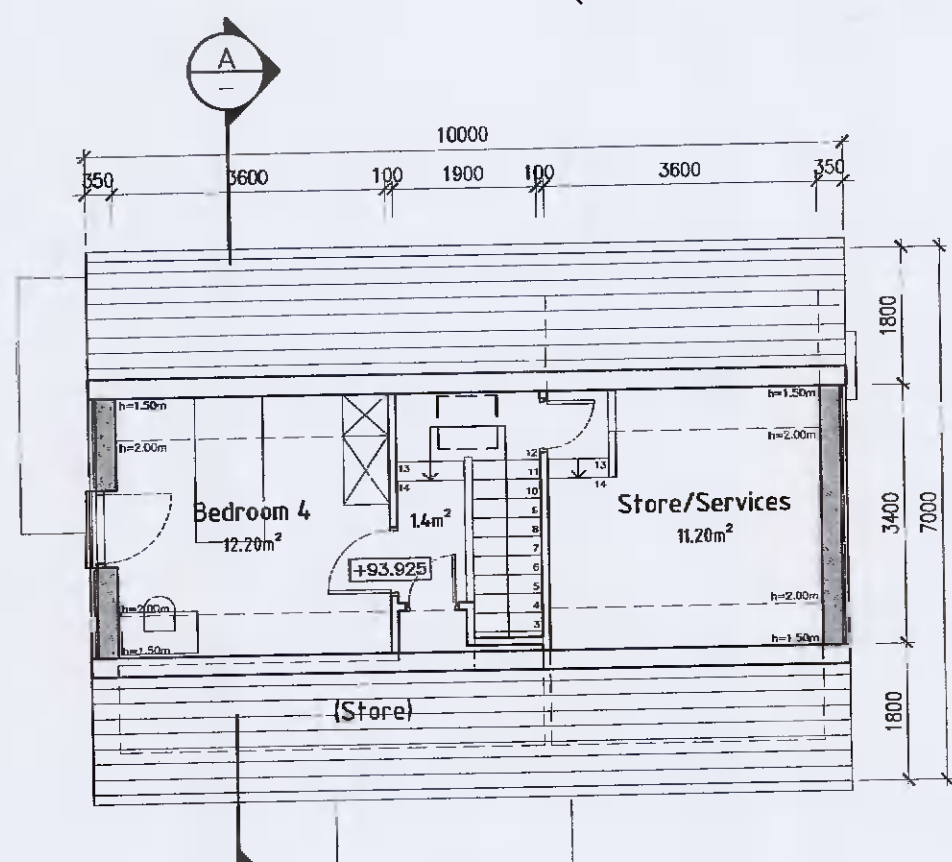
ATTIC FLOOR PLAN (Unit 7/8)

UNITS 7/8 FLOOR LEVEL
RAISED TO IMPROVE
RELATIONSHIP WITH HOUSE 6



CROSS-SECTION B-B (Unit 8)

UNITS 7/8 FLOOR LEVEL
RAISED TO IMPROVE
RELATIONSHIP WITH HOUSE 6



ATTIC FLOOR PLAN (Unit 6)

- NOTES:
1. This drawing is copyright and may only be reproduced with the architect's permission.
 2. Do not scale.
 3. Only written dimensions.
 4. Drawings to be read in conjunction with civil/structural engineer, landscape architect and other consultant drawings, details and specifications.
 5. ADDITIONAL INFORMATION RESPONSES SHOWN IN UNDERLINED CAPITAL LETTERS

Rev. Date: Dn. Details

DRAWING PLOTTED ON:

Client:

BRENDA WEIR

Fionnuala Rogerson Architects
Ardona House Lower Churchtown Rd. Dublin 14
Telephone: (01) 2984261
E-mail: info@rogerson.ie

Project Title:
Proposed Residential Development
at Rookwood, Stocking Lane,
Ballyboden, Dublin 16, D16 N5P3

Drawing Title:
General Arrangement
House Nos.6-8 (Woodland Houses)
First & Attic Floor Plans, Sections

Drawing Status:
PLANNING - ADDITIONAL INFORMATION

Scales:
1:100 @ A1

Date	March 2022	Approved by:	Dn.	NG
Project No.	1833	Drawing No.	PA-017(2)	Ch: Rev.