

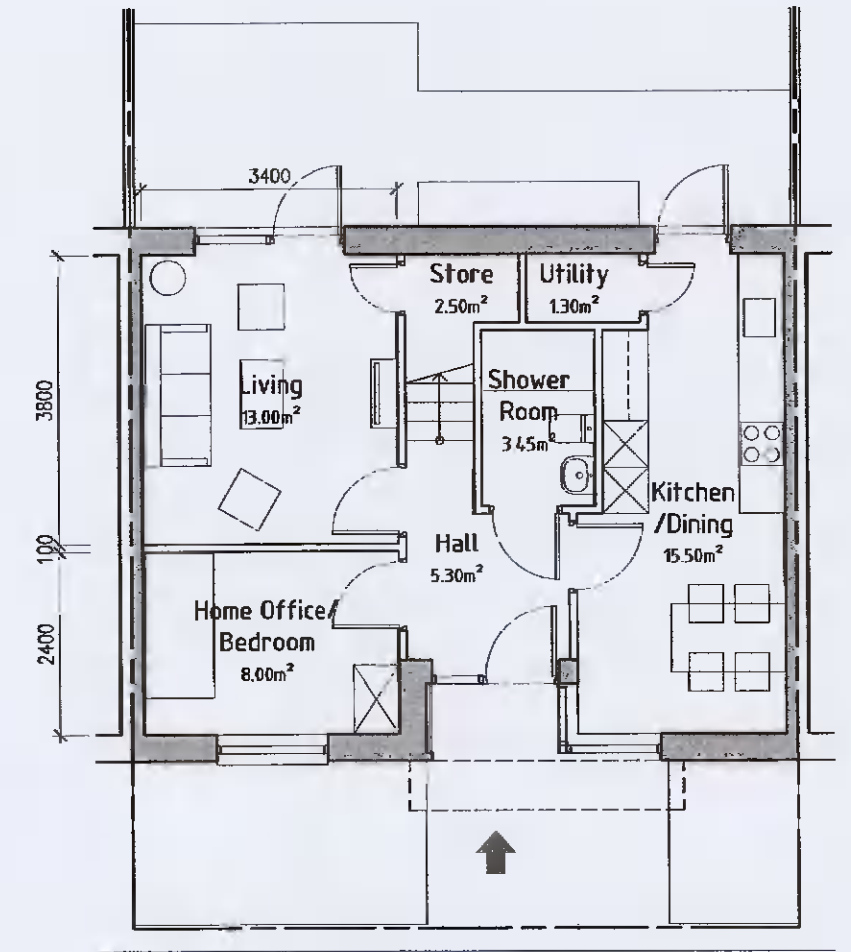
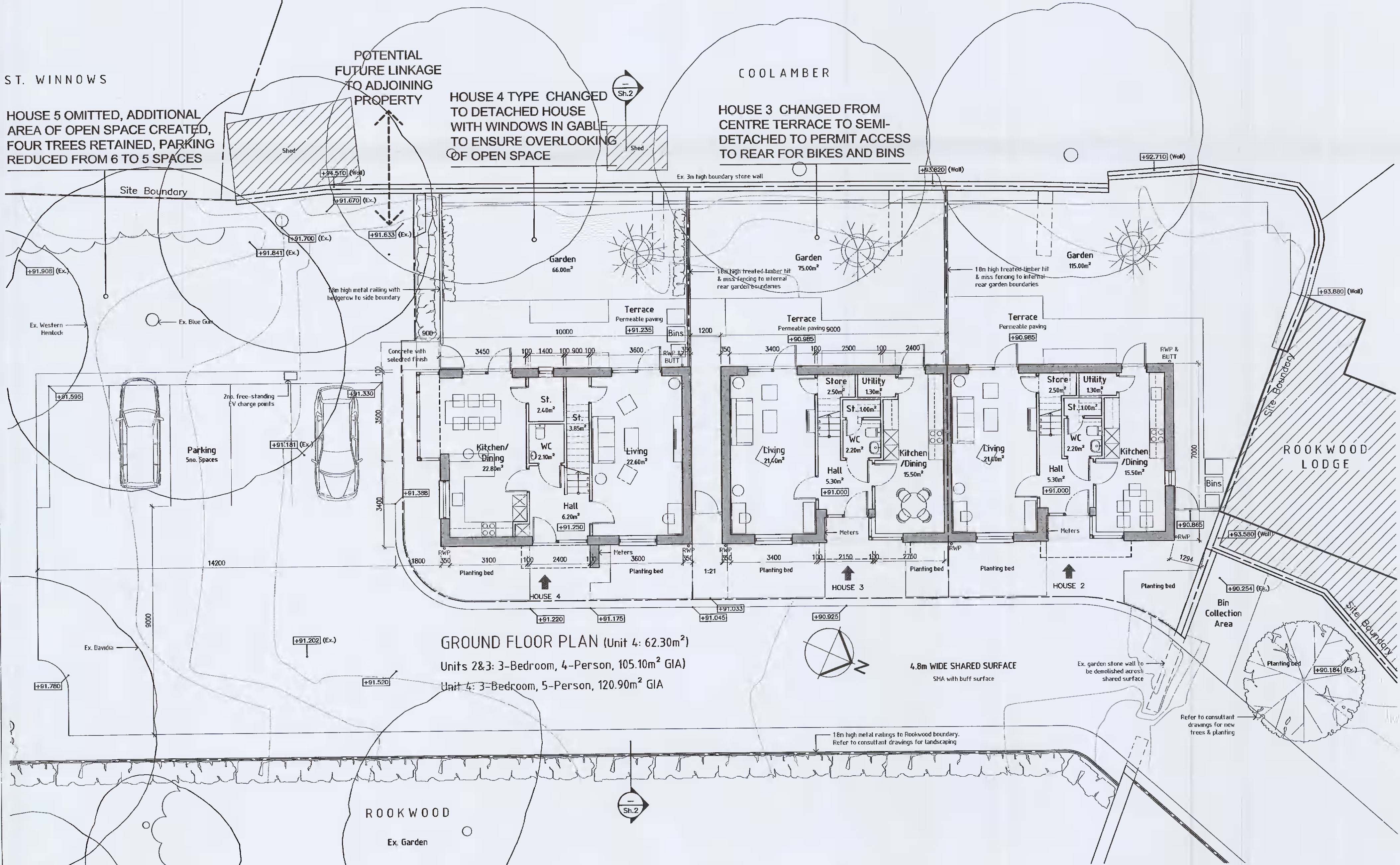
- NOTES:
1. This drawing is copyright and may only be reproduced with the architect's permission.
 2. Do not scale.
 3. Only written dimensions.
 4. Drawings to be read in conjunction with civil/structural engineer, landscape architect and other consultant drawings, details and specifications.
 5. ADDITIONAL INFORMATION RESPONSES SHOWN IN UNDERLINED CAPITAL LETTERS

ST. WINNOWS
 HOUSE 5 OMITTED, ADDITIONAL AREA OF OPEN SPACE CREATED, FOUR TREES RETAINED, PARKING REDUCED FROM 6 TO 5 SPACES

POTENTIAL FUTURE LINKAGE TO ADJOINING PROPERTY

HOUSE 4 TYPE CHANGED TO DETACHED HOUSE WITH WINDOWS IN GABLE TO ENSURE OVERLOOKING OF OPEN SPACE

HOUSE 3 CHANGED FROM CENTRE TERRACE TO SEMI-DETACHED TO PERMIT ACCESS TO REAR FOR BIKES AND BINS



Rev.	Date	Dn.	Details

DRAWING PLOTTED ON:
 Client:
 BRENDA WEIR

Fionnuala Rogerson Architects
 Aratona House Lower Churchtown Rd. Dublin 14
 Telephone: (01) 2984261
 E-mail: info@rogerson.ie

Project Title:
 Proposed Residential Development at Rookwood, Stocking Lane, Ballyboden, Dublin 16, D16 N5P3

Drawing Title:
 General Arrangement House Nos.2-4 (Mews Houses) Ground & First Floor Plans

Drawing Status:
 PLANNING - ADDITIONAL INFORMATION

Scales:
 1:100 @ A1

Date March 2022	Approved by:	Dn. NG
Project No. 1833	Drawing No. PA-016(1)	Ch: Rev.