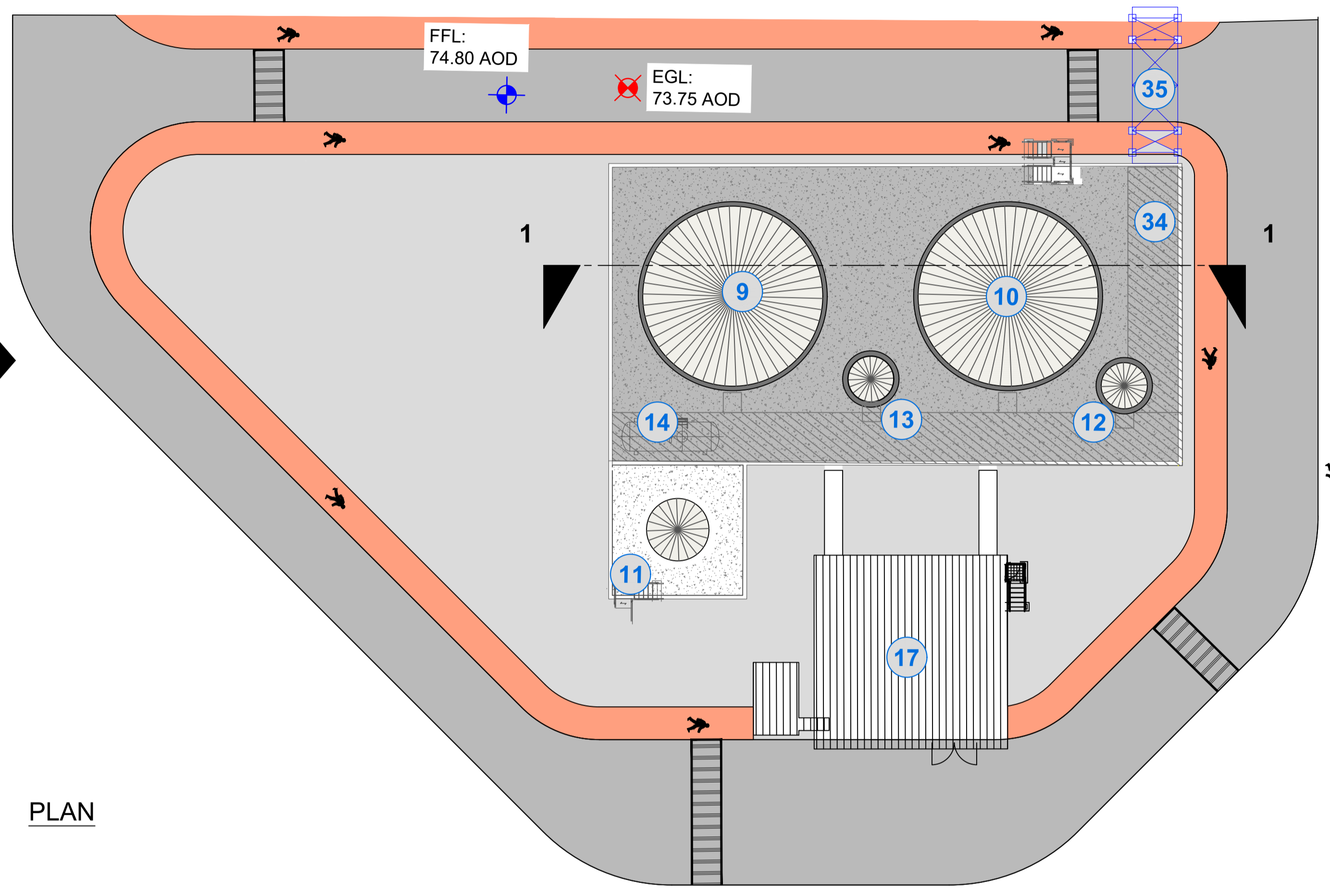


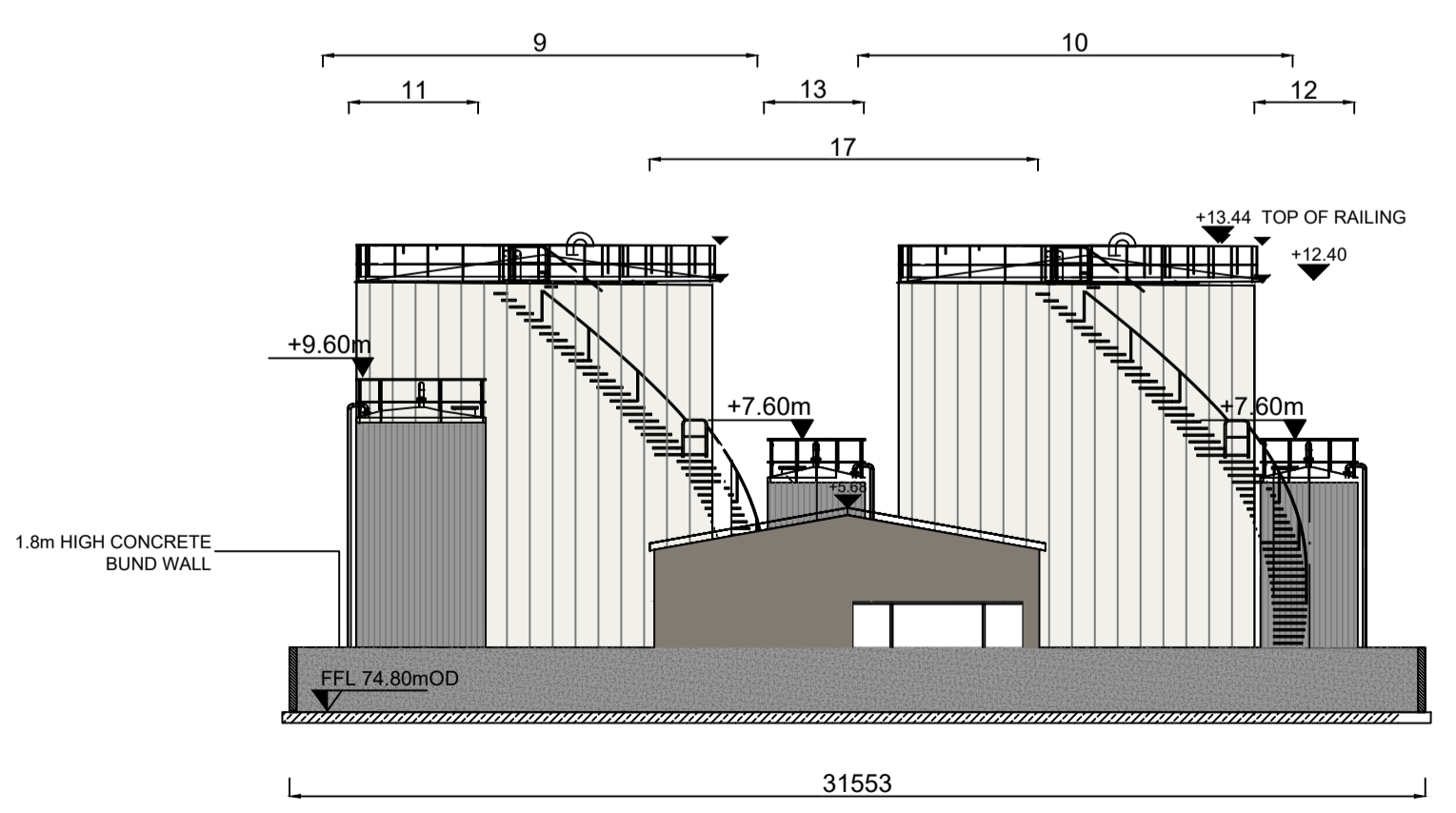


ELEVATION B

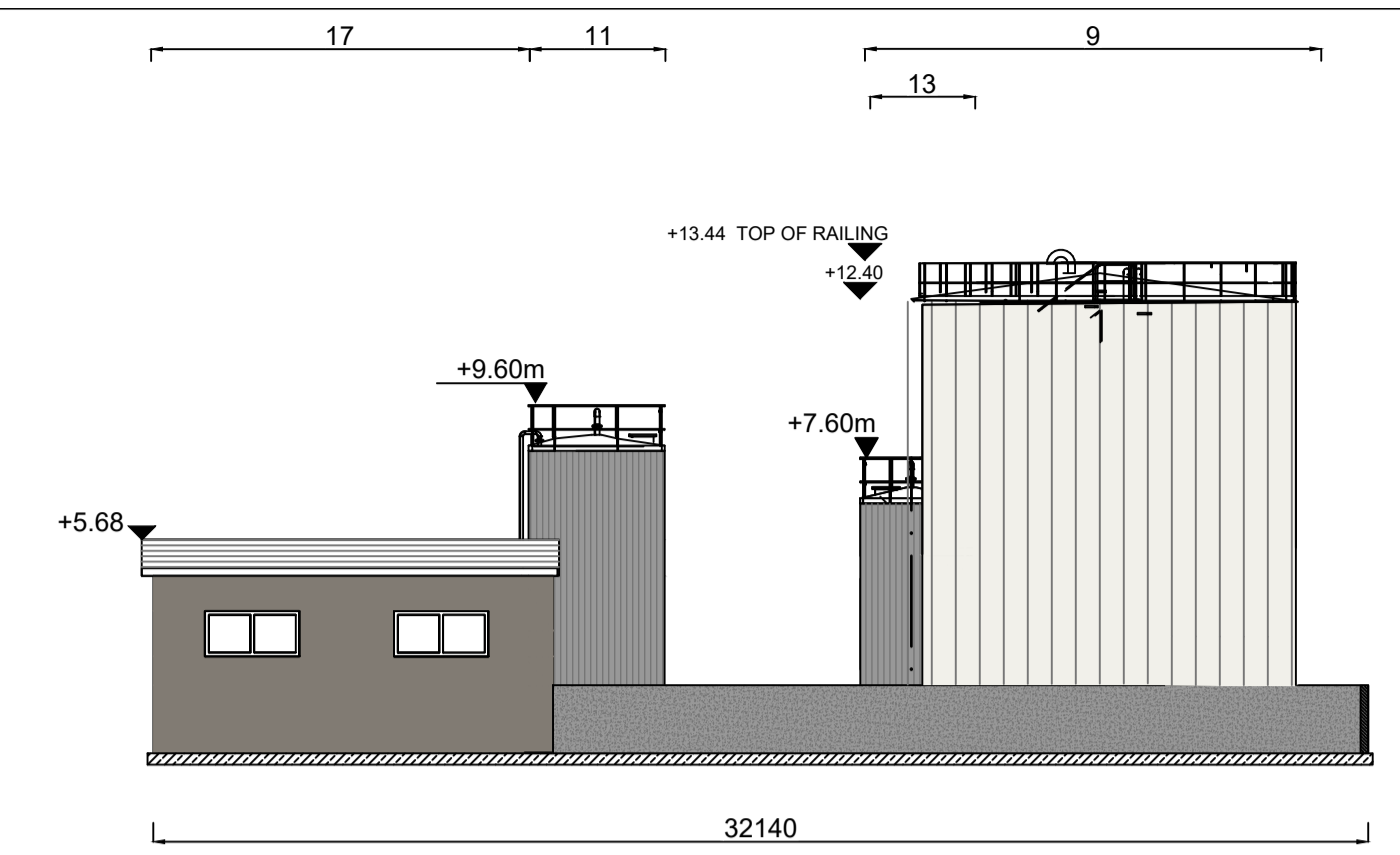


PLAN

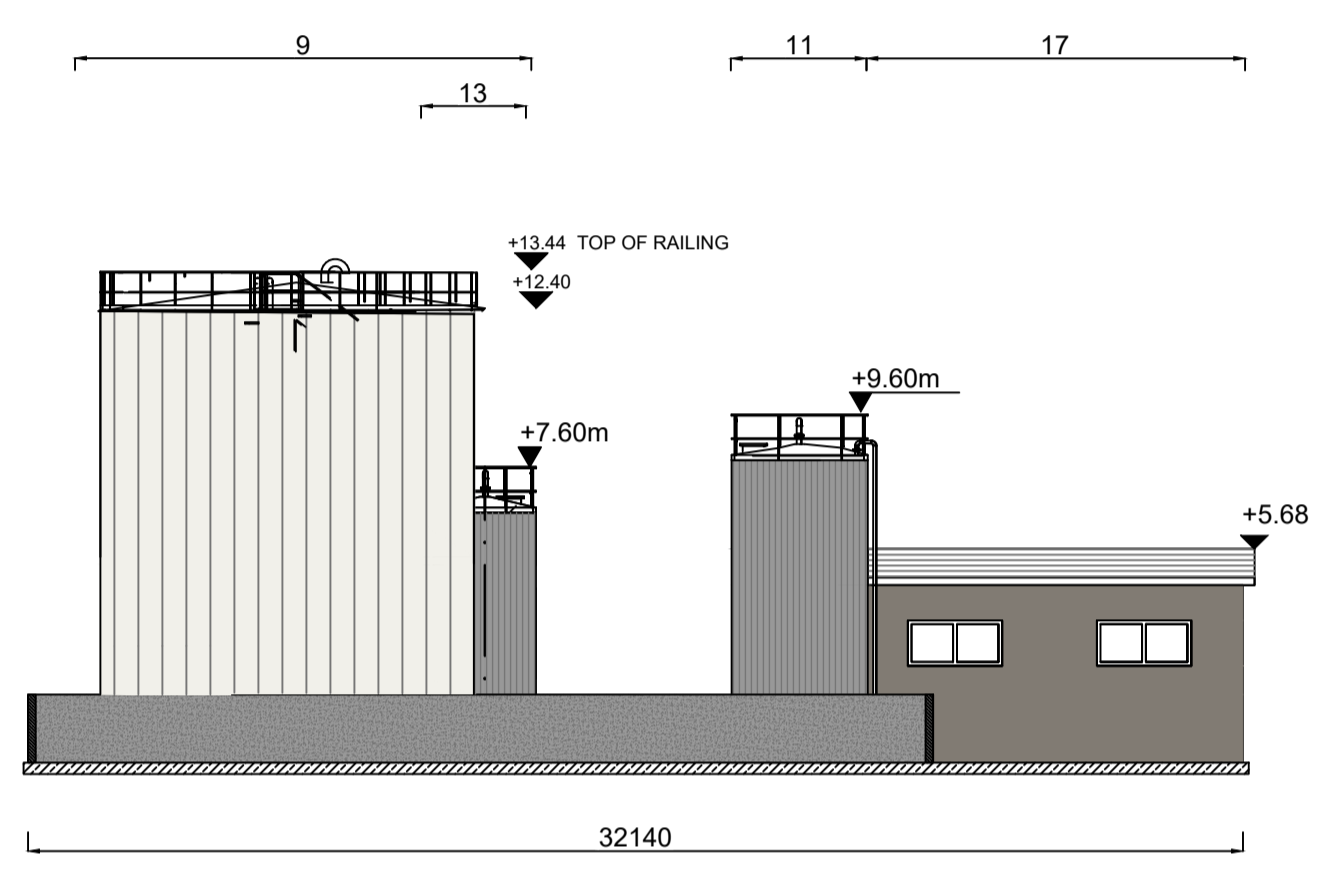
ELEVATION A



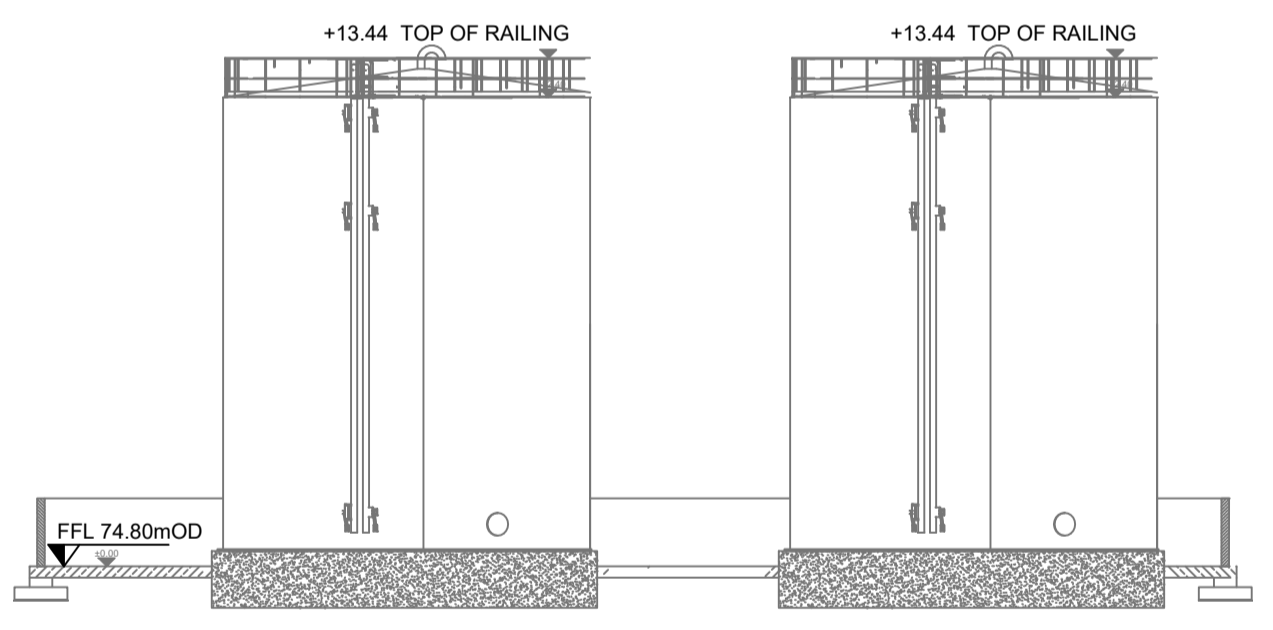
ELEVATION A



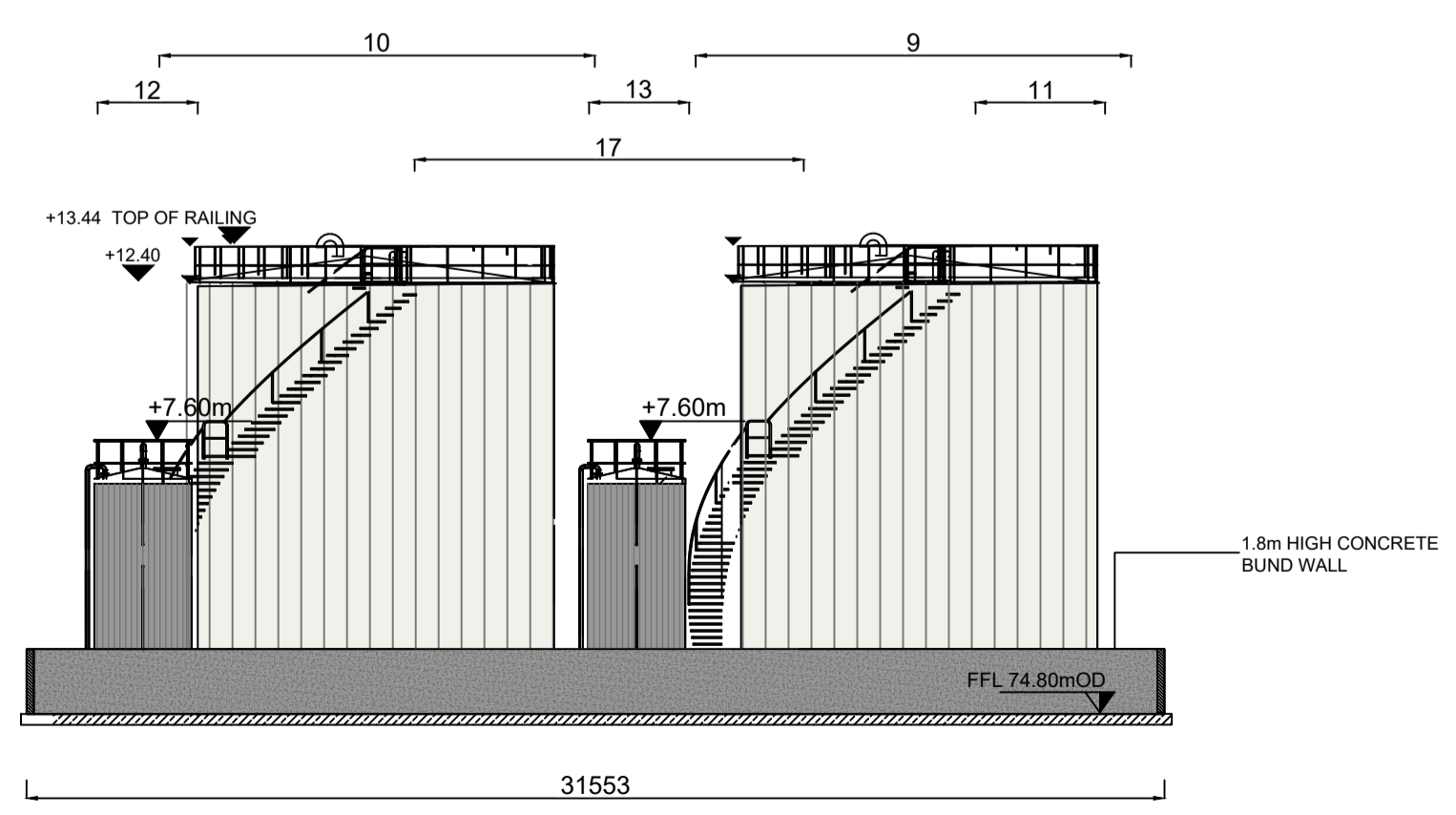
ELEVATION C



ELEVATION D



SECTION 1-1



ELEVATION B

BUILDING & PLANT ID KEY		
Item ID	Item Name	
8	Tank Farm Bund	
9	Diesel Oil Storage Tank	- 966m <sup>3</sup>
10	Diesel Oil Storage Tank	- 966m <sup>3</sup>
11	Urea Storage Tank	- 73m <sup>3</sup>
12	Lube Oil Storage Tank	- 26m <sup>3</sup>
13	Lube Oil Maintenance Tank	- 26m <sup>3</sup>
14	Effluent Collecting Tank	- 26m <sup>3</sup>
17	Tank Farm Building	
34	Pipe Rack	
35	Pipe Bridge	

As agreed with South Dublin County Council in the pre-application consultation meeting the final finishes, including cladding materials and colour codes, will be agreed with the Council post planning through planning condition. Greener Ideas Limited will ensure only Council approved finishes are applied on site.

Rev	Date	Description	By	Chkd.
A	02.03.22	PLANNING ISSUE	MN	MMcC

Client:

Project: **PROFILE PARK POWER PLANT**

Title: **TANK FARM BUND PLAN, ELEVATIONS & SECTION**

Scale @ A1:	1:200
Prepared by:	M. Nolan
Checked:	M. McCarthy
Date:	March 2022
Project Director:	S. Tinnelly
Drawing Status:	Planning

**TOBIN**  
CONSULTING ENGINEERS

Block 10-4, Blanchardstown Corporate Park,  
Dublin 15, Ireland.  
tel: +353-(0)1-8030406  
fax: +353-(0)1-8030409  
e-mail: dublin@tobin.ie  
www.tobin.ie

Drawing No.: **11069-2046** Revision: **A**