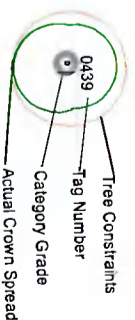


Notes:



BSS537: 2012 - Category Retention Rating

Category U Trees-
Trees in such a condition that any existing value would be lost within 10 years or being recommended for removal sound arboricultural practice.

Category A Trees
Trees in high quality species with a min. of 40 years life expectancy.

Category B Trees
Trees of moderate quality with a min. of 20 years life expectancy.

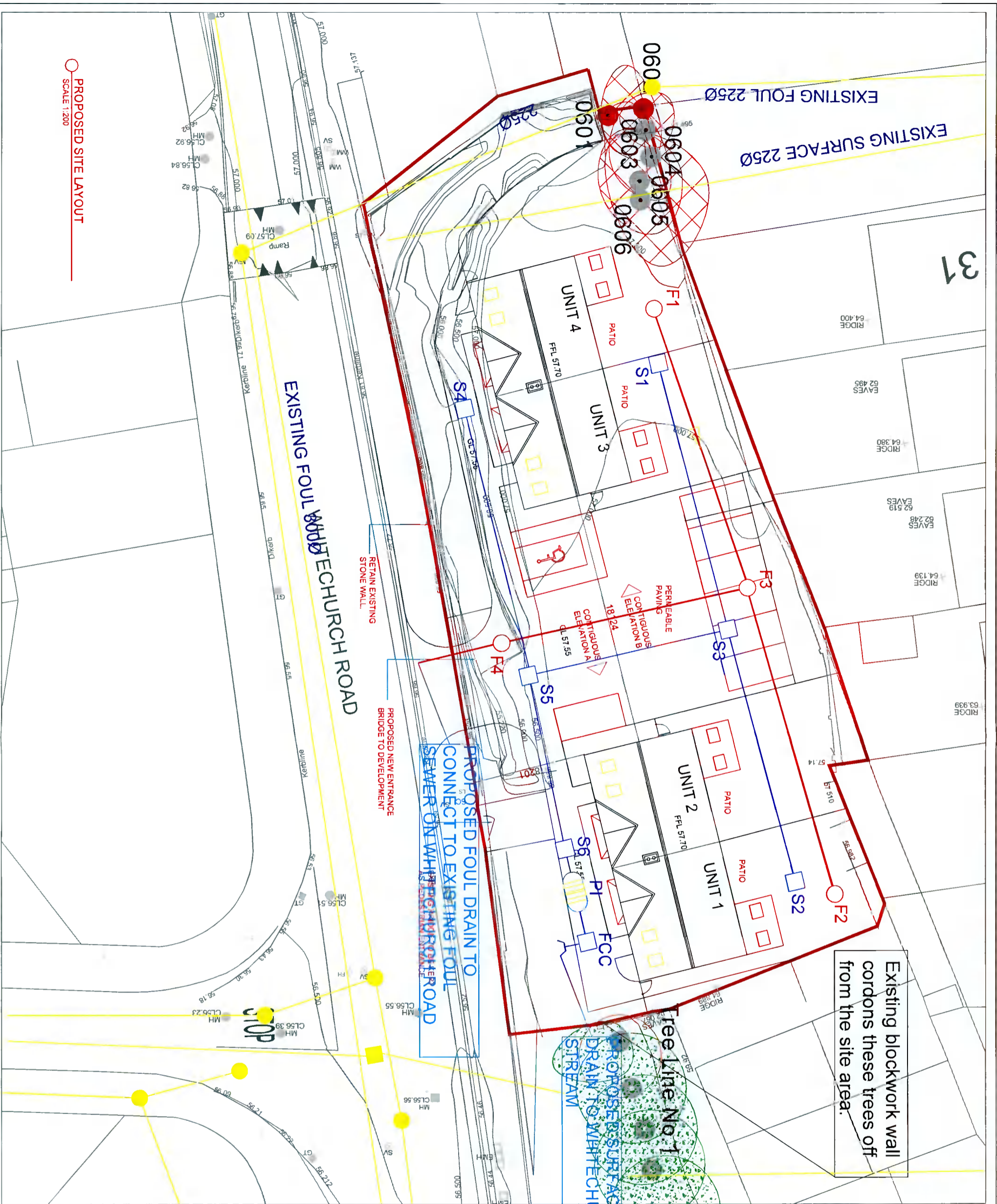
Category C Trees
Trees in low quality species with a min. of 10 years life expectancy.

Sub Categories
1 - Many Arboricultural values
2 - Many cultural and conservation values

ARBORIST ASSOCIATES LTD.
94 BALLYBAWY COTTAGES, ENNISKERRY, CO WICKLOW
TEL: 01-2742011 / 087-2829589

TITLE: Tree Constraints Plan
Site: 'Capri', Whitechurch Road, Rathfarnham, Dublin 14.

DATE: **Dwg No:** CWC001 **Scale:** 1:250 @A3



Existing blockwork wall cordons these trees off from the site area.

Notes:

0439
Tree Constraints
Tag Number
Category Grade
Actual Crown Spread

BS5837: 2012 - Category Retention Rating

Category U Trees
Trees of low quality/condition that any existing value would be lost within 10 years or being recommended for removal should appropriate practice

Category A Trees
Trees of high quality/condition with a min. of 40 years life expectancy.

Category B Trees
Trees of moderate quality/condition with a min. of 20 years life expectancy.

Category C Trees
Trees of low quality/condition with a min. of 10 years life expectancy.

Sub Categories
1. Many Arboricultural values
2. Many Landscaped and conservation values
3. Many situated and conservation values

Tree being retained

Trees being removed

PROPOSED SITE LAYOUT
SCALE 1:200

ARBORIST ASSOCIATES LTD.
94 BALLYBAMN COTTAGES, ENNISKERRY, CO WICKLOW
TEL: 01-2742011 / 087-2629989

TITLE: Tree Removal Plan
Site: 'Copri', Whitechurch Road, Rathfarnham, Dublin 14.

DATE: DWG No. CWC002 Scale 1:250 @A3