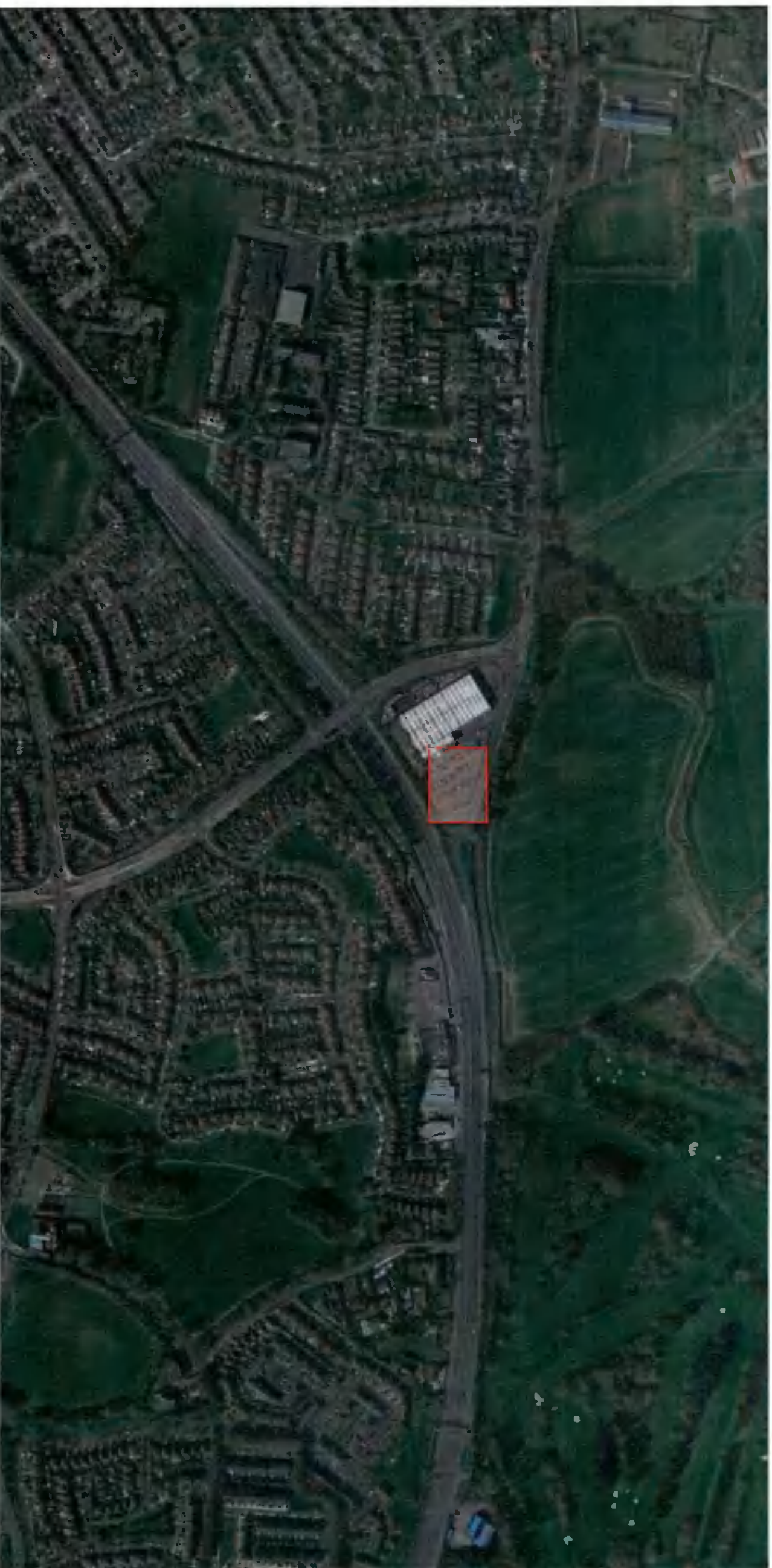


Landscape Rationale

**Proposed Drive Through Coffee Shop Development
At Starbucks, Lucan Retail Park Co. Dublin**

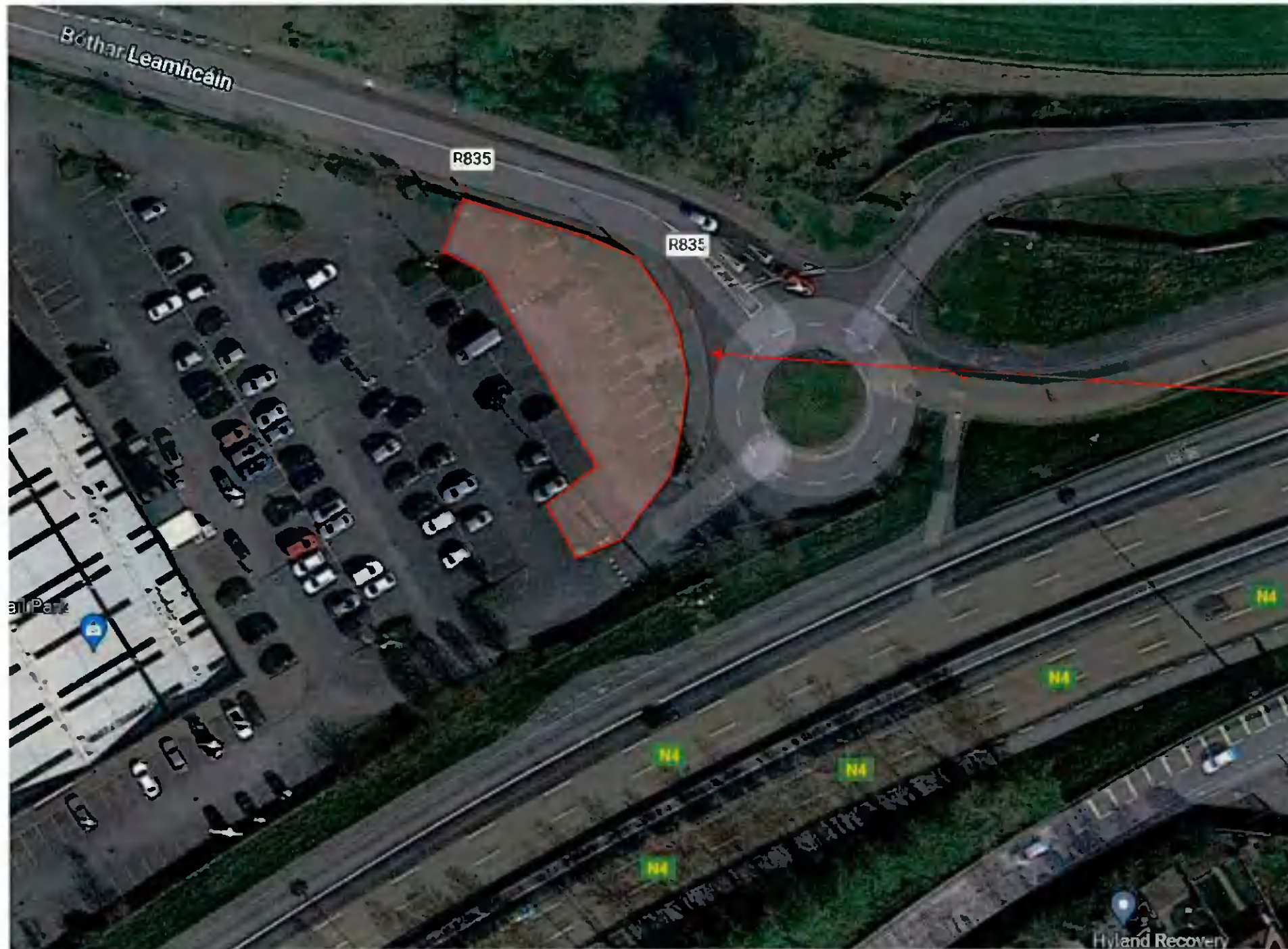


Context & Site Location



Development Location

Context & Site Location



General location of site. Please see Architects drawing for red line boundary

Development Location

Landscape Masterplan



Node Areas



Vehicle Entrance Node – Announcing change of Area & Change of Landscape,



Pedestrian Entrance Node – Announcing change of Area & Change of Landscape



Site Views



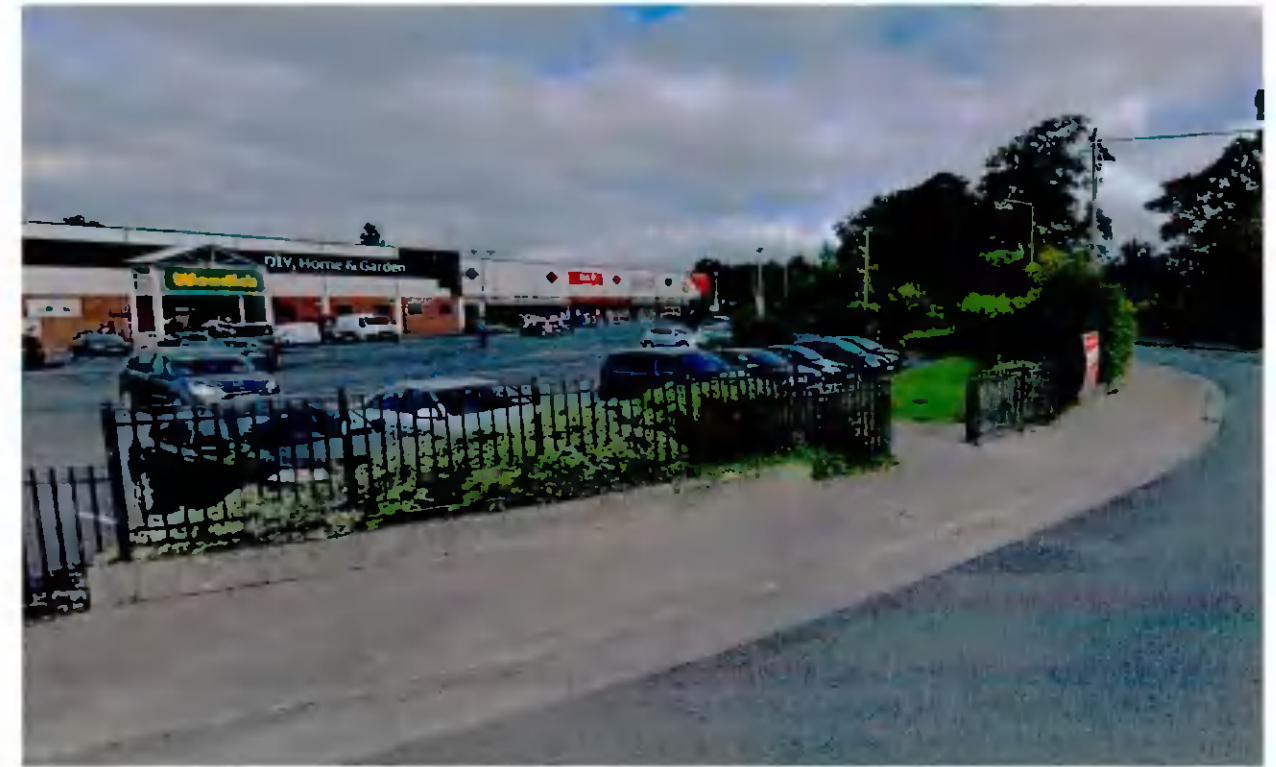
West View



West South West View

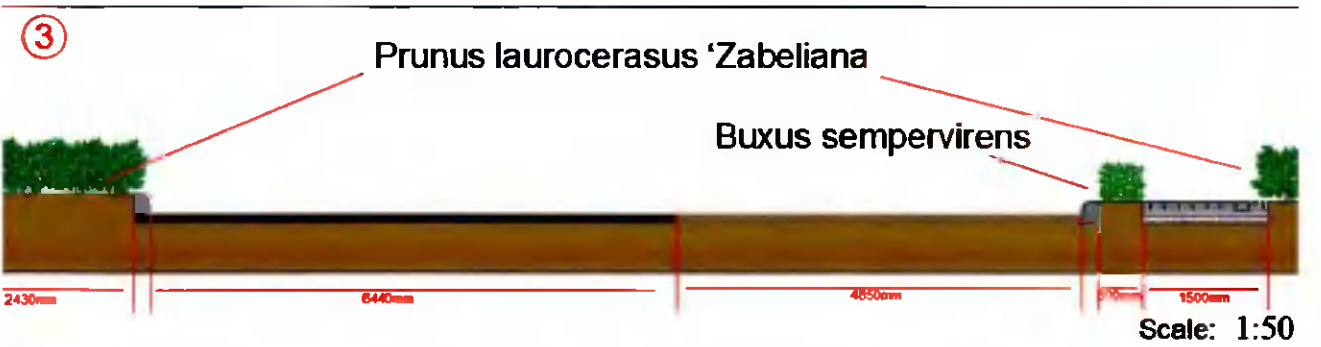
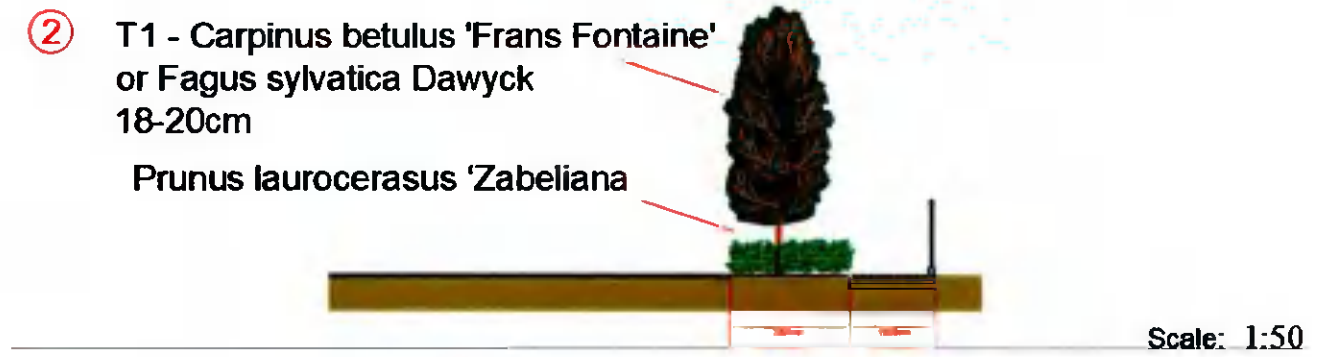
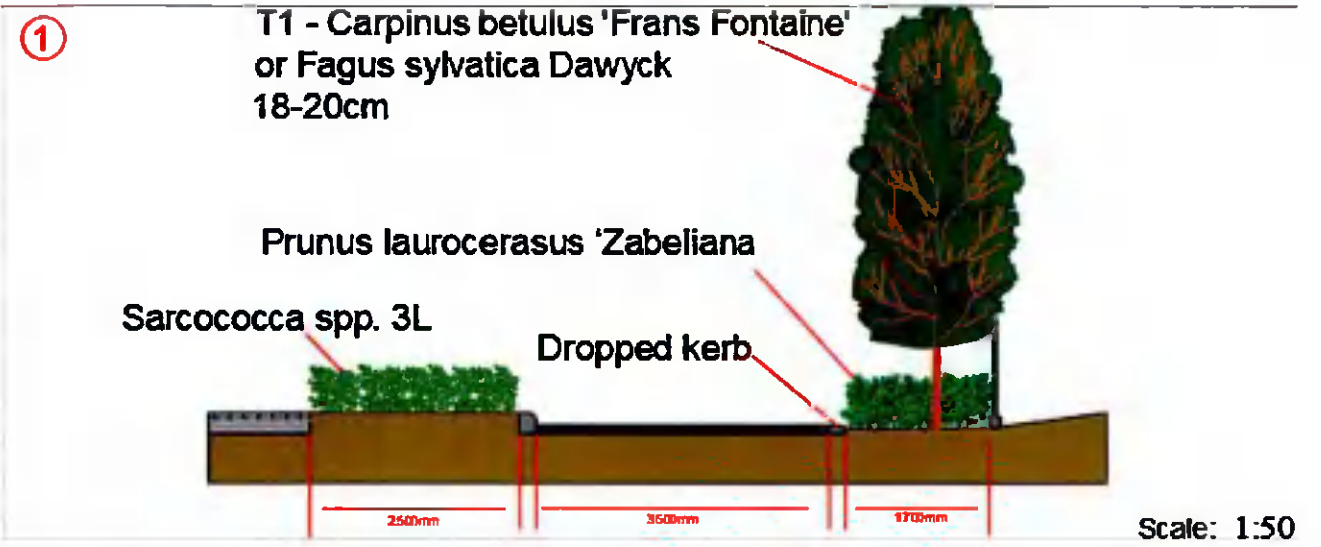
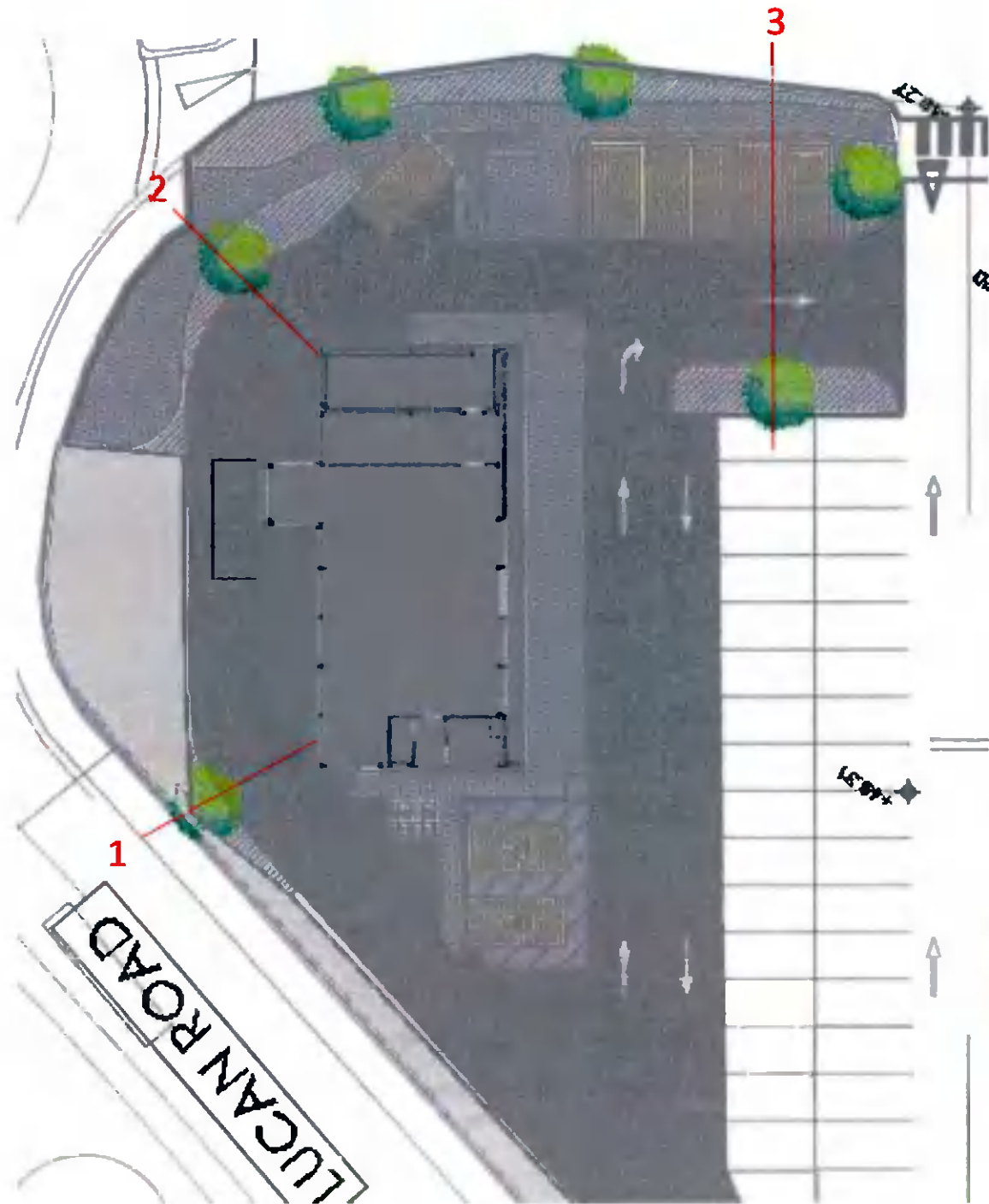


South View



North West View

Sections Through The Site



Boundary Treatment

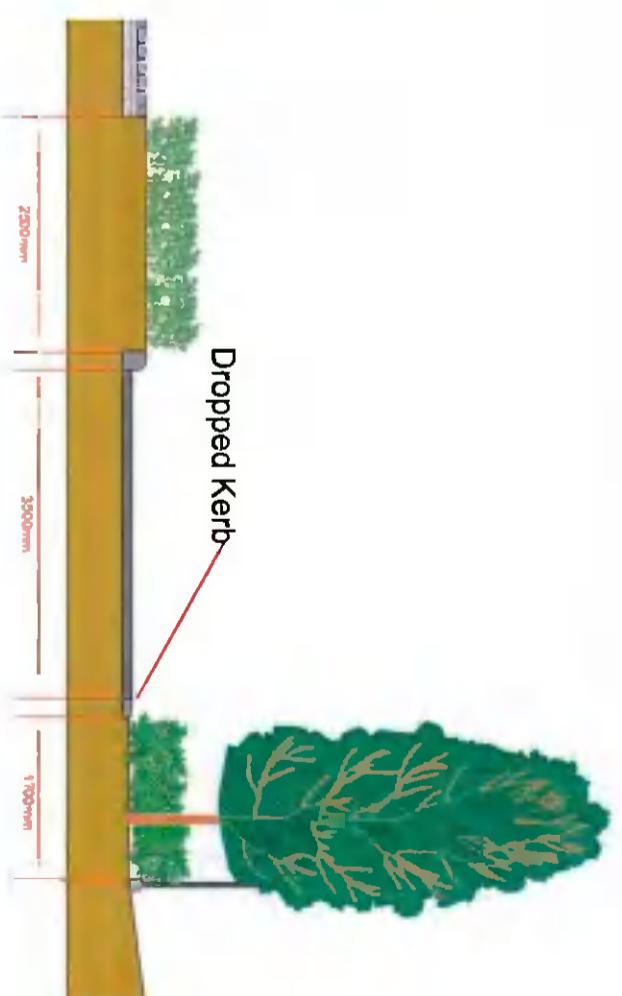
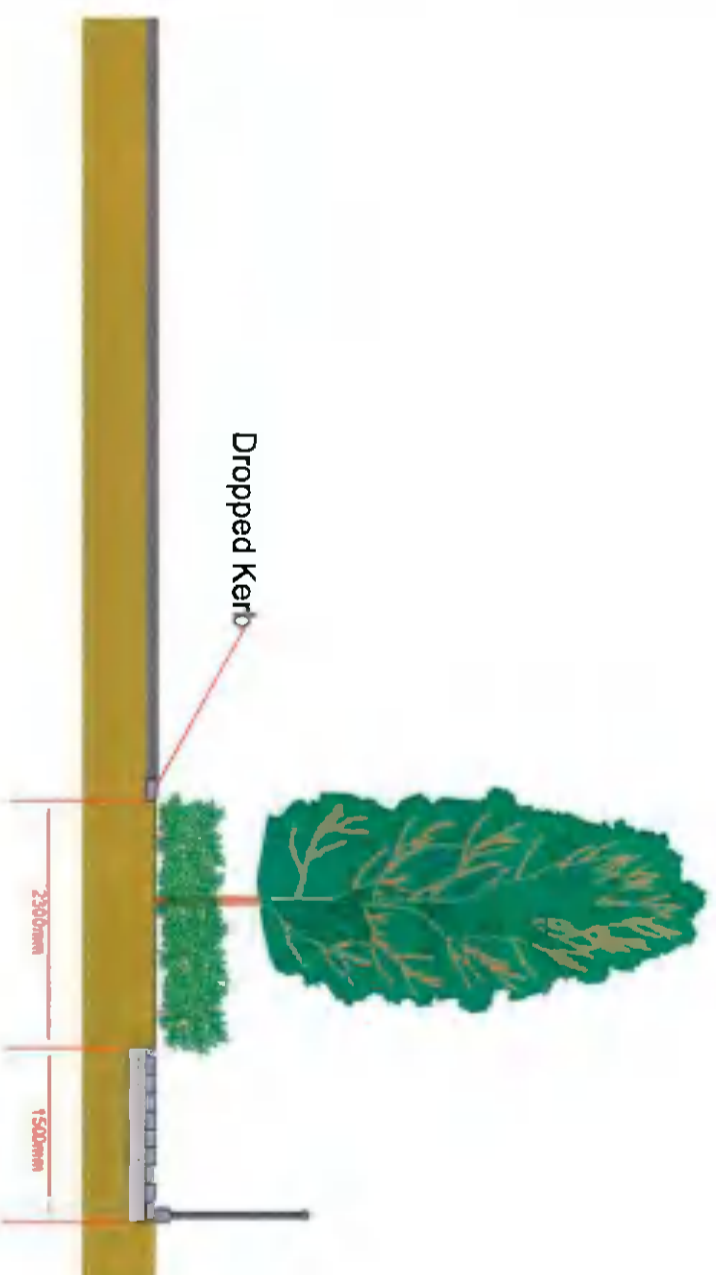
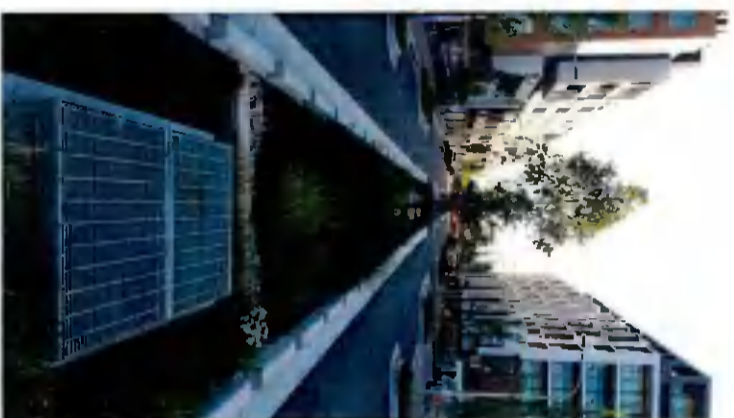
Boundary Treatment

Existing Hedge cut back to accommodate new entrance space.

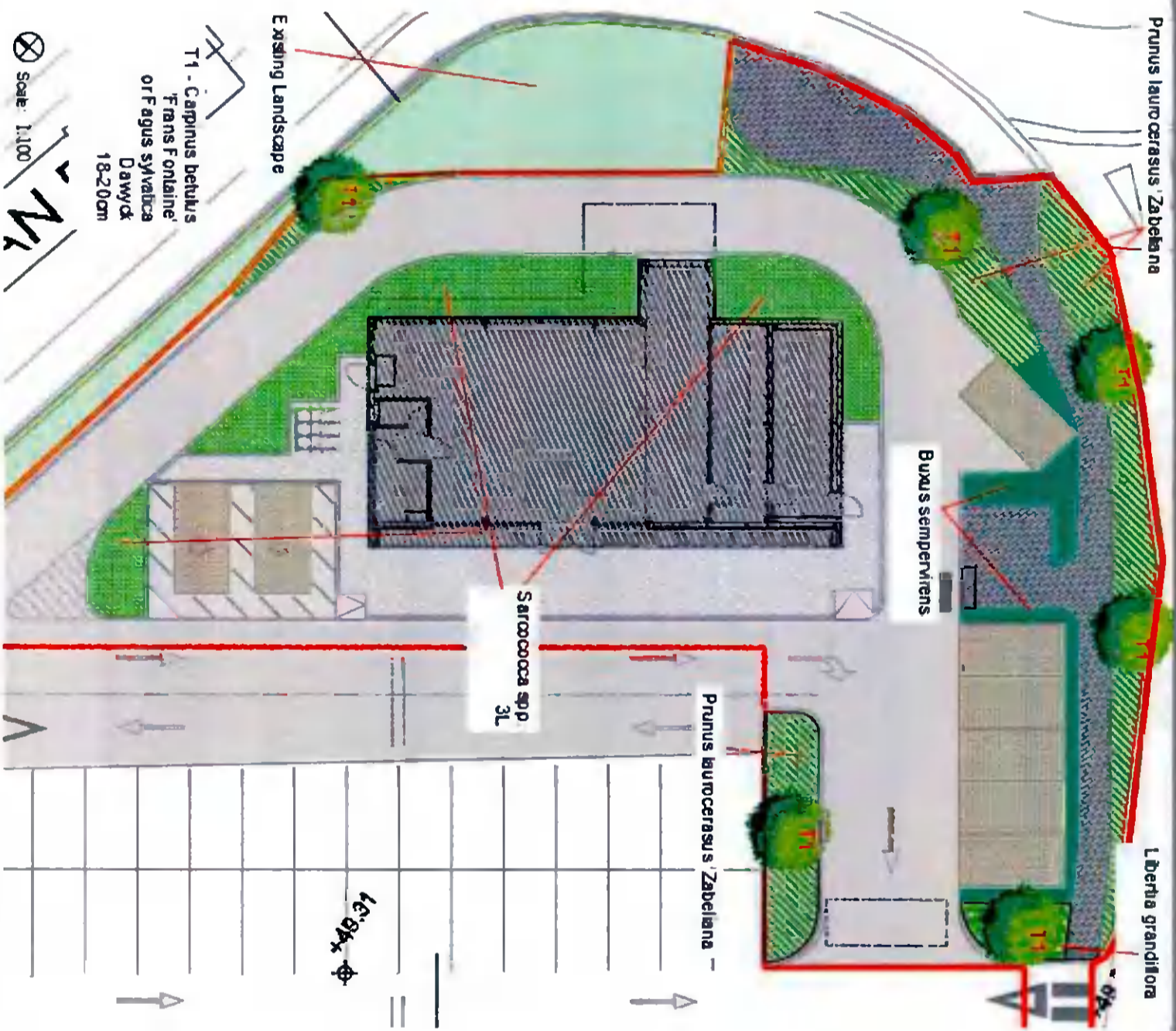


Landscape Details

Dropped Kerb Detail



Planting Plan



Proposed Planting



Carpinus betulus 'Frans Fontaine'

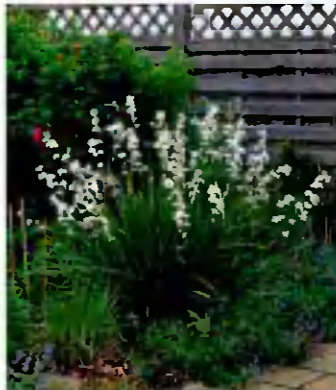


Fagus sylvatica 'Dawyck'

Proposed Tree Planting Open Space / Parkland Trees

Street Trees

	Common Name	Species Name	Specification
T1	Upright Beech	<i>Fagus sylvatica</i> 'Dawyck'	r/b 18-20cm gt.
or			
T1	Upright Hornbeam	<i>Carpinus betulus</i> 'Frans Fontaine'	r/b 18-20cm gt.



Libertia grandiflora



Buxus sempervirens



Prunus laurocerasus 'Zabeliana'



Sarcococca spp.

S1 - Edging Buffer w/ Textured Screening (450mm topsoil depth)

Common Name	Species Name	Specification	Centres
Cherry Laurel	<i>Prunus laurocerasus</i> 'Zabeliana'	b/r 60-90cm ht.	700mm
Box	<i>Buxus sempervirens</i>	b/r 60-90cm ht.	700mm
Libertia	<i>Libertia grandiflora</i>	b/r 60-90cm ht.	700mm

S2 - Groundcover Planting (450mm topsoil depth)

Common Name	Species Name	Specification	Centres
Christmas Box	<i>Sarcococca</i> spp.	b/r 60-90cm ht.	700mm



Note: Planting shown throughout rationale are mature and are not indicative of size that shall be planted first.

Detailed Design - Landscape Details

SCHEDULE OF IMPLEMENTATION:

1. ALL TREE AND HEDGEROW PLANTING IS TO BE CARRIED OUT DURING THE FIRST WINTER SEASON, I.E. NOVEMBER TO FEBRUARY INCLUSIVE.
2. ALL LAWN AREAS ARE TO BE PREPARED AND SEEDING DURING THE GROWING SEASON, I.E. APRIL TO OCTOBER INCLUSIVE.
3. ALL CONTAINERISED SHRUB PLANTING MAY BE CARRIED OUT AT ANY TIME OF WHEN SOIL IS NOT FROZEN, WATERLOGGED OR EXCESSIVELY DRY.

PLANTING NOTES:

ALL TREES, SHRUBS AND HEDGEROW PLANTS SHALL COMPLY WITH BS 3936, SPECIFICATION FOR NURSERY STOCK. ALL PRE-PLANTING SITE PREPARATION, PLANTING AND POST PLANTING MAINTENANCE WORKS SHALL BE CARRIED OUT IN ACCORDANCE WITH THE REQUIREMENTS OF BS 4428 (1989) CODE OF PRACTICE FOR GENERAL LANDSCAPE OPERATIONS (EXCLUDING HARD SURFACES).

ALL NEW TREE PLANTING SHALL BE POSITIONED IN ACCORDANCE WITH THE REQUIREMENTS OF TABLE 3 OF BS 5837: 2005 TREE IN RELATION TO CONSTRUCTION: RECOMMENDATIONS, WHICH SPECIFIES MINIMUM DISTANCES BETWEEN NEW PLANTING AND STRUCTURES.

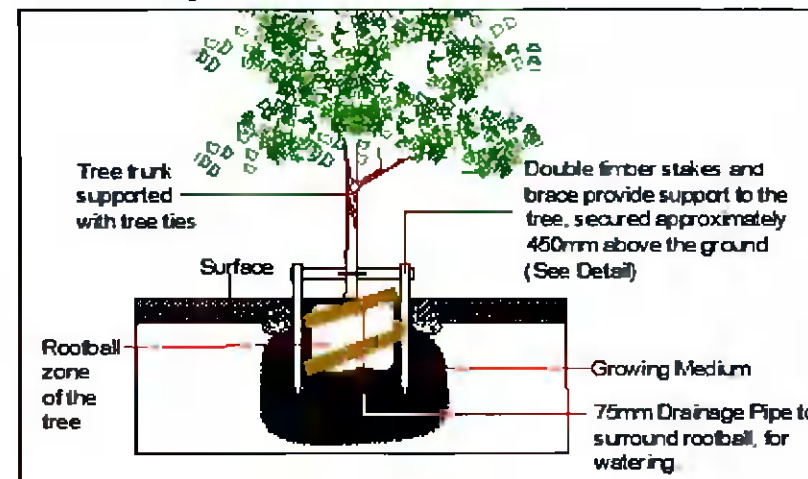


Tree Planting

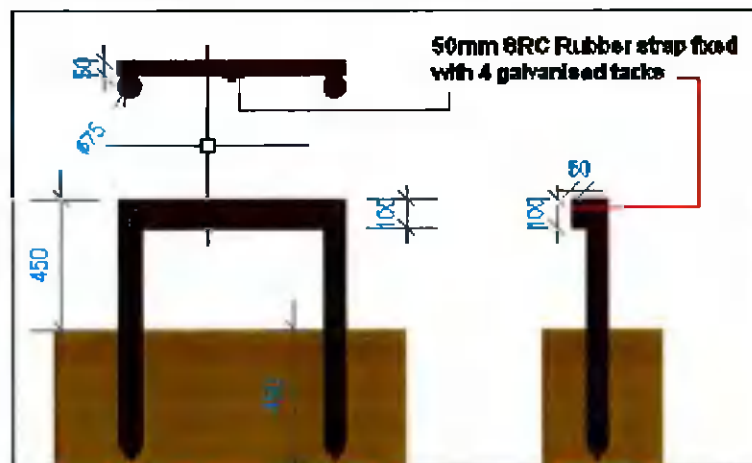


Tree Planting

Tree Planting Detail



Typical double Tree staking detail



Shrub Planting Detail

