



Units 5A-C Second Avenue, Cookstown | HOUSING QUALITY ASSESSMENT

SECTION 145B AMENDMENT APPLICATION



2.1 APARTMENT TYPES

Consented unit
Proposed unit

BLOCK A.

Apt 001	1 Bed (2p)	NA	L00 Ground Floor
Apt 002	1 Bed (2p)	NA	L00 Ground Floor
Apt 003	2 Bed (4p)	2 Bed 4P Type 2	L00 Ground Floor
Apt 004	2 Bed (4p)	NA	L00 Ground Floor
Apt 005	2 Bed (4p)	1 Bed Type 02	L01 First Floor
Apt 006	2 Bed (4p)	1 Bed Type 02	L01 First Floor
Apt 007	1 Bed (2p)	NA	L01 First Floor
Apt 008	1 Bed (2p)	1 Bed Type 06	L01 First Floor
Apt 009	Studio	NA	L01 First Floor
Apt 010	1 Bed (2p)	1 Bed Type 02	L01 First Floor
Apt 011	2 Bed (4p)	NA	L01 First Floor
Apt 012	2 Bed (4p)	NA	L02 Second Floor
Apt 013	2 Bed (4p)	NA	L02 Second Floor
Apt 014	1 Bed (2p)	NA	L02 Second Floor
Apt 015	1 Bed (2p)	1 Bed Type 02	L02 Second Floor
Apt 016	1 Bed (2p)	1 Bed Type 02	L02 Second Floor
Apt 017	1 Bed (2p)	NA	L02 Second Floor
Apt 018	2 Bed (4p)	NA	L02 Second Floor
Apt 019	2 Bed (4p)	NA	L02 Second Floor
Apt 020	2 Bed (4p)	NA	L03 Third Floor
Apt 021	2 Bed (4p)	NA	L03 Third Floor
Apt 022	1 Bed (2p)	NA	L03 Third Floor
Apt 023	1 Bed (2p)	1 Bed Type 02	L03 Third Floor
Apt 024	1 Bed (2p)	1 Bed Type 02	L03 Third Floor
Apt 025	1 Bed (2p)	NA	L03 Third Floor
Apt 026	2 Bed (4p)	NA	L03 Third Floor
Apt 027	2 Bed (4p)	NA	L03 Third Floor
Apt 028	2 Bed (4p)	NA	L04 Fourth Floor
Apt 029	2 Bed (4p)	NA	L04 Fourth Floor
Apt 030	1 Bed (2p)	NA	L04 Fourth Floor
Apt 031	1 Bed (2p)	1 Bed Type 02	L04 Fourth Floor
Apt 032	1 Bed (2p)	1 Bed Type 02	L04 Fourth Floor
Apt 033	1 Bed (2p)	NA	L04 Fourth Floor
Apt 034	2 Bed (4p)	NA	L04 Fourth Floor
Apt 035	2 Bed (4p)	NA	L04 Fourth Floor
Apt 036	2 Bed (4p)	NA	L05 Fifth Floor
Apt 037	2 Bed (4p)	NA	L05 Fifth Floor
Apt 038	1 Bed (2p)	NA	L05 Fifth Floor
Apt 039	1 Bed (2p)	1 Bed Type 02	L05 Fifth Floor
Apt 040	1 Bed (2p)	1 Bed Type 02	L05 Fifth Floor
Apt 041	1 Bed (2p)	NA	L05 Fifth Floor
Apt 042	2 Bed (4p)	NA	L05 Fifth Floor
Apt 043	2 Bed (4p)	NA	L05 Fifth Floor
Total: 43			

BLOCK B, C & D.

Apt 044	1 Bed (2p)	NA	L00 Ground Floor
Apt 045	1 Bed (2p)	NA	L00 Ground Floor
Apt 046	2 Bed (4p)	NA	L00 Ground Floor
Apt 047	2 Bed (4p)	NA	L00 Ground Floor
Apt 048	2 Bed (4p)	2 Bed 4P Type 1	L00 Ground Floor
Apt 049	1 Bed (2p)	1 Bed Type 01	L00 Ground Floor
Apt 050	Studio	NA	L00 Ground Floor
Apt 051	2 Bed (4p)	NA	L01 First Floor
Apt 052	2 Bed (4p)	NA	L01 First Floor
Apt 053	2 Bed (3p)	NA	L01 First Floor
Apt 054	1 Bed (2p)	NA	L01 First Floor
Apt 055	Studio	Studio Type 2	L01 First Floor
Apt 056	Studio	Studio Type 1	L01 First Floor
Apt 057	1 Bed (2p)	1 Bed Type 05	L01 First Floor
Apt 058	2 Bed (4p)	NA	L01 First Floor
Apt 059	2 Bed (4p)	NA	L01 First Floor
Apt 060	2 Bed (3p)	2 Bed 3P Type 1	L01 First Floor
Apt 061	2 Bed (3p)	NA	L01 First Floor
Apt 062	2 Bed (4p)	NA	L01 First Floor
Apt 063	2 Bed (4p)	NA	L01 First Floor
Apt 064	2 Bed (4p)	NA	L01 First Floor
Apt 065	1 Bed (2p)	NA	L01 First Floor
Apt 066	1 Bed (2p)	1 Bed Type 02	L01 First Floor
Apt 067	1 Bed (2p)	1 Bed Type 02	L01 First Floor
Apt 068	1 Bed (2p)	1 Bed Type 03	L01 First Floor
Apt 069	2 Bed (4p)	2 Bed 4P Type 5	L01 First Floor
Apt 070	2 Bed (4p)	2 Bed 4P Type 4	L01 First Floor
Apt 071	2 Bed (4p)	2 Bed 4P Type 4	L01 First Floor
Apt 072	1 Bed (2p)	1 Bed Type 05	L01 First Floor
Apt 073	1 Bed (2p)	1 Bed Type 04	L01 First Floor
Apt 074	2 Bed (4p)	2 Bed 4P Type 3	L01 First Floor
Apt 075	2 Bed (4p)	NA	L02 Second Floor
Apt 076	2 Bed (4p)	NA	L02 Second Floor
Apt 077	2 Bed (3p)	NA	L02 Second Floor
Apt 078	1 Bed (2p)	NA	L02 Second Floor
Apt 079	Studio	Studio Type 2	L02 Second Floor
Apt 080	Studio	Studio Type 1	L02 Second Floor
Apt 081	1 Bed (2p)	1 Bed Type 05	L02 Second Floor
Apt 082	2 Bed (4p)	NA	L02 Second Floor
Apt 083	2 Bed (4p)	NA	L02 Second Floor
Apt 084	1 Bed (2p)	1 Bed Type 05	L02 Second Floor
Apt 085	1 Bed (2p)	1 Bed Type 05	L02 Second Floor
Apt 086	2 Bed (3p)	NA	L02 Second Floor
Apt 087	2 Bed (4p)	NA	L02 Second Floor
Apt 088	2 Bed (4p)	NA	L02 Second Floor
Apt 089	2 Bed (4p)	NA	L02 Second Floor
Apt 090	1 Bed (2p)	NA	L02 Second Floor
Apt 091	1 Bed (2p)	1 Bed Type 02	L02 Second Floor
Apt 092	1 Bed (2p)	1 Bed Type 02	L02 Second Floor
Apt 093	1 Bed (2p)	NA	L02 Second Floor
Apt 094	1 Bed (2p)	1 Bed Type 05	L02 Second Floor
Apt 095	1 Bed (2p)	1 Bed Type 05	L02 Second Floor
Apt 096	2 Bed (4p)	2 Bed 4P Type 4	L02 Second Floor
Apt 097	2 Bed (4p)	2 Bed 4P Type 4	L02 Second Floor
Apt 098	1 Bed (2p)	1 Bed Type 05	L02 Second Floor
Apt 099	1 Bed (2p)	1 Bed Type 04	L02 Second Floor
Apt 100	2 Bed (4p)	NA	L02 Second Floor
Apt 101	2 Bed (4p)	NA	L03 Third Floor
Apt 102	2 Bed (4p)	NA	L03 Third Floor
Apt 103	2 Bed (3p)	NA	L03 Third Floor
Apt 104	1 Bed (2p)	NA	L03 Third Floor
Apt 105	Studio	Studio Type 2	L03 Third Floor
Apt 106	Studio	Studio Type 1	L03 Third Floor
Apt 107	1 Bed (2p)	1 Bed Type 05	L03 Third Floor
Apt 108	2 Bed (4p)	NA	L03 Third Floor
Apt 109	2 Bed (4p)	NA	L03 Third Floor
Apt 110	1 Bed (2p)	1 Bed Type 02	L03 Third Floor
Apt 111	1 Bed (2p)	1 Bed Type 02	L03 Third Floor
Apt 112	2 Bed (3p)	NA	L03 Third Floor
Apt 113	2 Bed (4p)	NA	L03 Third Floor
Apt 114	2 Bed (4p)	NA	L03 Third Floor
Apt 115	2 Bed (4p)	NA	L03 Third Floor
Apt 116	1 Bed (2p)	NA	L03 Third Floor
Apt 117	1 Bed (2p)	1 Bed Type 02	L03 Third Floor
Apt 118	1 Bed (2p)	1 Bed Type 02	L03 Third Floor
Apt 119	1 Bed (2p)	NA	L03 Third Floor
Apt 120	1 Bed (2p)	1 Bed Type 05	L03 Third Floor
Apt 121	1 Bed (2p)	1 Bed Type 05	L03 Third Floor
Apt 122	2 Bed (4p)	2 Bed 4P Type 4	L03 Third Floor
Apt 123	2 Bed (4p)	2 Bed 4P Type 4	L03 Third Floor
Apt 124	1 Bed (2p)	1 Bed Type 05	L03 Third Floor
Apt 125	1 Bed (2p)	1 Bed Type 04	L03 Third Floor
Apt 126	2 Bed (4p)	NA	L03 Third Floor
Apt 127	2 Bed (4p)	NA	L04 Fourth Floor
Apt 128	2 Bed (4p)	NA	L04 Fourth Floor
Apt 129	2 Bed (3p)	NA	L04 Fourth Floor

Apt 130	1 Bed (2p)	NA	L04 Fourth Floor	Apt 179	1 Bed (2p)	NA	L06 Sixth Floor
Apt 131	Studio	Studio Type 2	L04 Fourth Floor	Apt 180	1 Bed (2p)	1 Bed Type 07	L06 Sixth Floor
Apt 132	Studio	Studio Type 1	L04 Fourth Floor	Apt 181	2 Bed (4p)	NA	L06 Sixth Floor
Apt 133	1 Bed (2p)	1 Bed Type 05	L04 Fourth Floor	Apt 182	Studio	NA	L06 Sixth Floor
Apt 134	2 Bed (4p)	NA	L04 Fourth Floor	Apt 183	2 Bed (3p)	NA	L06 Sixth Floor
Apt 135	2 Bed (4p)	NA	L04 Fourth Floor	Apt 184	2 Bed (4p)	NA	L06 Sixth Floor
Apt 136	1 Bed (2p)	1 Bed Type 02	L04 Fourth Floor	Apt 185	1 Bed (2p)	NA	L06 Sixth Floor
Apt 137	1 Bed (2p)	1 Bed Type 02	L04 Fourth Floor	Apt 186	2 Bed (4p)	NA	L06 Sixth Floor
Apt 138	2 Bed (3p)	NA	L04 Fourth Floor	Apt 187	Studio	NA	L06 Sixth Floor
Apt 139	2 Bed (4p)	NA	L04 Fourth Floor	Apt 188	2 Bed (4p)	NA	L06 Sixth Floor
Apt 140	2 Bed (4p)	NA	L04 Fourth Floor	Apt 189	1 Bed (2p)	NA	L07 Seventh Floor
Apt 141	2 Bed (4p)	NA	L04 Fourth Floor	Apt 190	1 Bed (2p)	1 Bed Type 07	L07 Seventh Floor
Apt 142	1 Bed (2p)	NA	L04 Fourth Floor	Apt 191	2 Bed (4p)	NA	L07 Seventh Floor
Apt 143	1 Bed (2p)	1 Bed Type 02	L04 Fourth Floor	Apt 192	Studio	NA	L07 Seventh Floor
Apt 144	1 Bed (2p)	1 Bed Type 02	L04 Fourth Floor	Apt 193	2 Bed (3p)	NA	L07 Seventh Floor
Apt 145	1 Bed (2p)	NA	L04 Fourth Floor	Apt 194	2 Bed (4p)	NA	L07 Seventh Floor
Apt 146	1 Bed (2p)	1 Bed Type 05	L04 Fourth Floor	Apt 195	1 Bed (2p)	NA	L07 Seventh Floor
Apt 147	1 Bed (2p)	1 Bed Type 05	L04 Fourth Floor	Apt 196	2 Bed (4p)	NA	L07 Seventh Floor
Apt 148	2 Bed (4p)	2 Bed 4P Type 4	L04 Fourth Floor	Apt 197	Studio	NA	L07 Seventh Floor
Apt 149	2 Bed (4p)	2 Bed 4P Type 4	L04 Fourth Floor	Apt 198	2 Bed (4p)	NA	L07 Seventh Floor
Apt 150	1 Bed (2p)	1 Bed Type 05	L04 Fourth Floor	Apt 199	1 Bed (2p)	NA	L08 Eighth Floor
Apt 151	1 Bed (2p)	1 Bed Type 04	L04 Fourth Floor	Apt 200	1 Bed (2p)	1 Bed Type 07	L08 Eighth Floor
Apt 152	2 Bed (4p)	NA	L04 Fourth Floor	Apt 201	2 Bed (4p)	NA	L08 Eighth Floor
Apt 153	2 Bed (4p)	NA	L05 Fifth Floor	Apt 202	Studio	NA	L08 Eighth Floor
Apt 154	2 Bed (4p)	NA	L05 Fifth Floor	Apt 203	2 Bed (3p)	NA	L08 Eighth Floor
Apt 155	2 Bed (3p)	NA	L05 Fifth Floor	Apt 204	2 Bed (4p)	NA	L08 Eighth Floor
Apt 156	1 Bed (2p)	NA	L05 Fifth Floor	Total: 161			
Apt 157	Studio	Studio Type 2	L05 Fifth Floor				
Apt 158	Studio	Studio Type 1	L05 Fifth Floor				
Apt 159	1 Bed (2p)	1 Bed Type 05	L05 Fifth Floor				
Apt 160	2 Bed (4p)	NA	L05 Fifth Floor				
Apt 161	2 Bed (4p)	NA	L05 Fifth Floor				
Apt 162	1 Bed (2p)	1 Bed Type 02	L05 Fifth Floor				
Apt 163	1 Bed (2p)	1 Bed Type 02	L05 Fifth Floor				
Apt 164	2 Bed (3p)	NA	L05 Fifth Floor				
Apt 165	2 Bed (4p)	NA	L05 Fifth Floor				
Apt 166	2 Bed (4p)	NA	L05 Fifth Floor				
Apt 167	2 Bed (4p)	NA	L05 Fifth Floor				
Apt 168	1 Bed (2p)	NA	L05 Fifth Floor				
Apt 169	1 Bed (2p)	1 Bed Type 02	L05 Fifth Floor				
Apt 170	1 Bed (2p)	1 Bed Type 02	L05 Fifth Floor				
Apt 171	1 Bed (2p)	NA	L05 Fifth Floor				
Apt 172	1 Bed (2p)	1 Bed Type 05	L05 Fifth Floor				
Apt 173	1 Bed (2p)	1 Bed Type 05	L05 Fifth Floor				
Apt 174	2 Bed (4p)	2 Bed 4P Type 4	L05 Fifth Floor				
Apt 175	2 Bed (4p)	2 Bed 4P Type 4	L05 Fifth Floor				
Apt 176	1 Bed (2p)	1 Bed Type 05	L05 Fifth Floor				
Apt 177	1 Bed (2p)	1 Bed Type 04	L05 Fifth Floor				
Apt 178	2 Bed (4p)	NA	L05 Fifth Floor				

Consented unit

Proposed unit

Grand Total: 204 units

2.1 APARTMENT TYPES INDEX

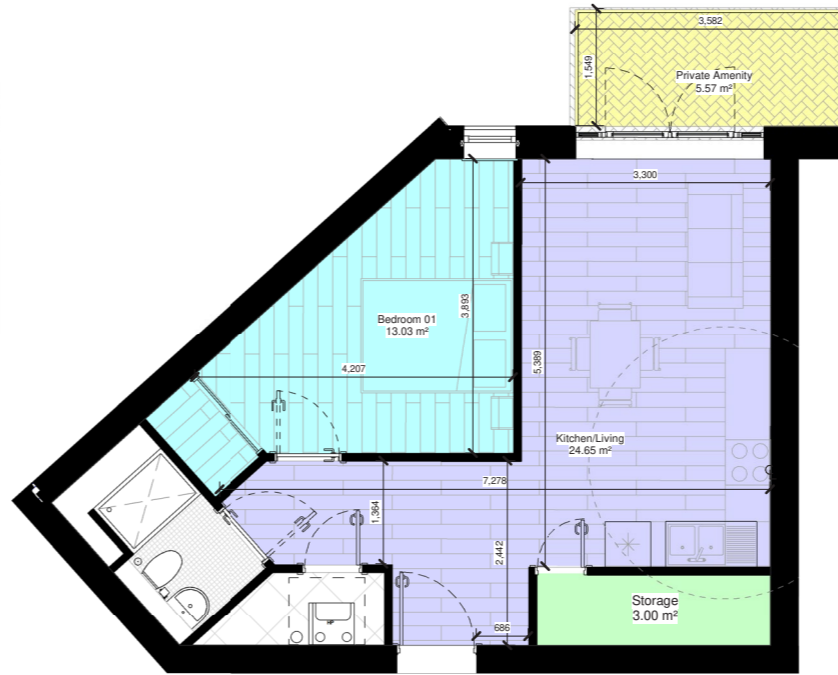
Type Ref.	No of Types	No of beds			Floor Area m2		Aspect	Living/Dining		Bedroom 01 Area		Bedroom 02 Area		Storage		Private Amenity		
		Studio	1	2 (3person)	2 (4person)	Required		Achieved	Dual Aspect	Required	Achieved	Required	Achieved	Required	Achieved	Required	Achieved	
Studio Type 1	5	•				37	37.4		30	30	30	30			3	3	4	5.2
Studio Type 2	5	•				37	38.4		30	30	30	30			3	3	4	5.1
Total	10																	
1 Bed Type 01	1		•			45	47.4		23	23.65	11.4	11.4			3	5.6	5	6.1
1 Bed Type 02	19		•			45	45.3		23	23	11.4	11.8			3	3.3	5	7.4
1 Bed Type 03	5		•			45	48		23	24.65	11.4	13			3	3	5	5.6
1 Bed Type 04	5		•			45	55.64		23	31	11.4	12.7			3	5	5	5.2
1 Bed Type 05	27		•			45	46.4		23	25.25	11.4	12.25			3	3	5	9.6
1 Bed Type 06	1		•			45	46.2	•	23	25.5	11.4	12			3	3	5	0
1 Bed Type 07	3		•			45	45		23	23	11.4	11.4			3	3	5	10.6
Total	61							1										
2 Bed 4P Type 1	1				•	73	73.3		30	30.35	11.4	11.7	13	13.44	6	6.3	7	12
2 Bed 4P Type 2	1				•	73	76.7		30	30	11.4	12.8	13	20	6	6.3	7	15.4
2 Bed 4P Type 3	5				•	73	75.3		30	30	11.4	11.4	13	16.6	6	6.5	7	6.65
2 Bed 4P Type 4	10				•	73	78.2	•	30	30	11.4	11.9	13	13	6	6	7	5.25
2 Bed 4P Type 5	1				•	73	74.2		30	31.7	11.4	12	13	13	6	6.3	7	14.7
2 Bed 3P Type 1	1			•		63	64.6		28	28	11.4	11.95	7.1	8.5	5	5.15	7	15.9
Total (inc. 3 person)	19							10										
Total	90																	



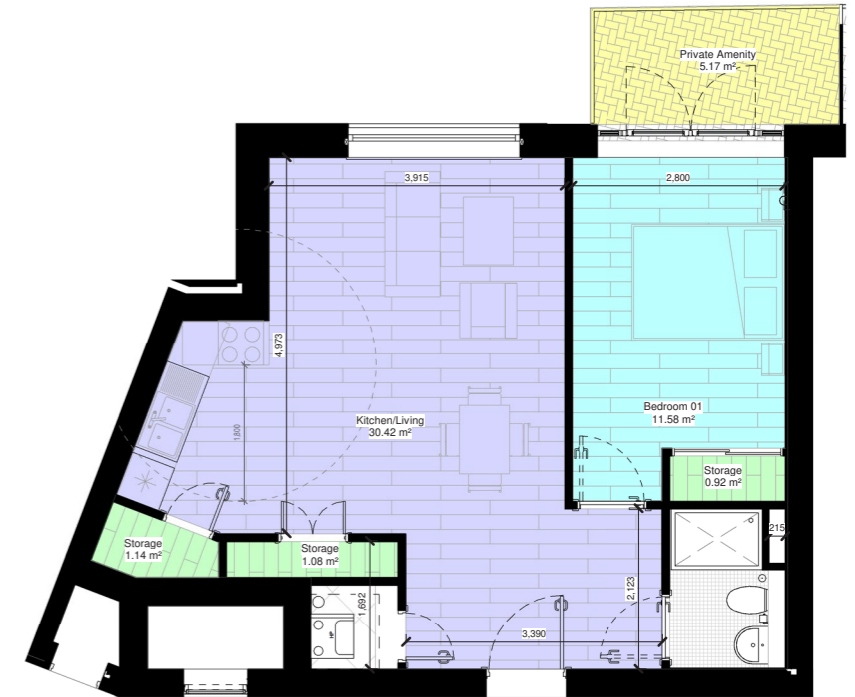
1 Bed Type 01
1 : 50



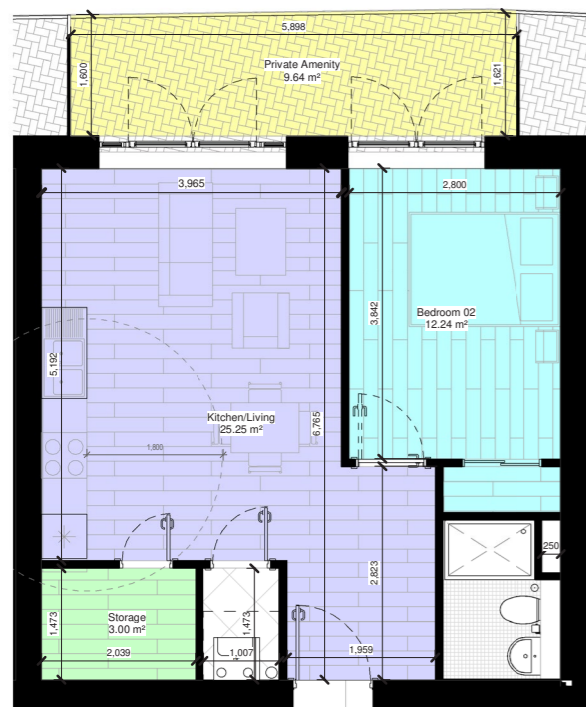
1 Bed Type 02
1 : 50



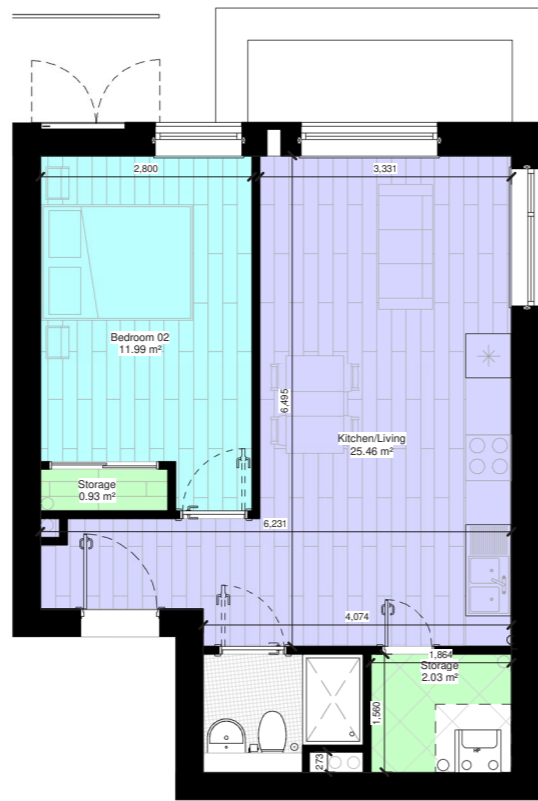
1 Bed Type 03
1 : 50



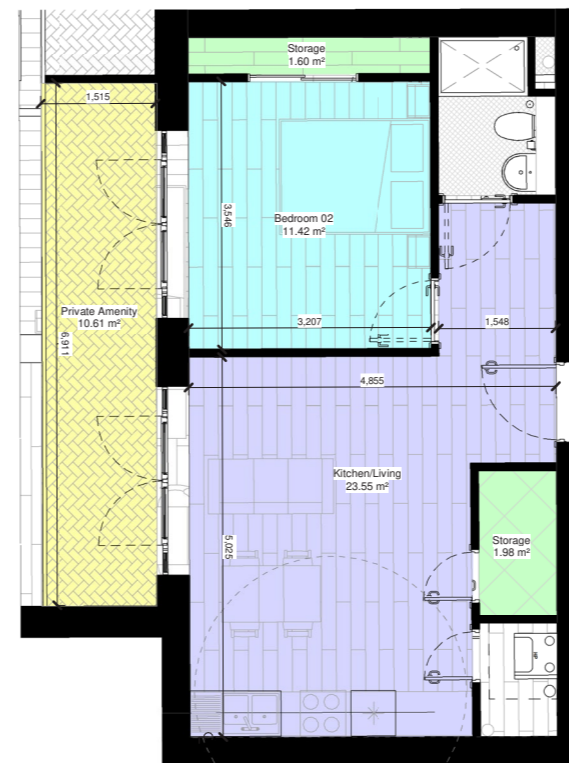
1 Bed Type 04
1 : 50



1 Bed Type 05
1 : 50



1 Bed Type 06
1 : 50



1 Bed Type 07
1 : 50

Notes:
 - Do not scale from this drawing. Use figured dimensions in all cases.
 - Verify dimensions on site and report any discrepancies to the Architect immediately.
 - This drawing to be read in conjunction with the Architect's Specification.
 - © This drawing is copyright and may only be reproduced with the Architect's permission.

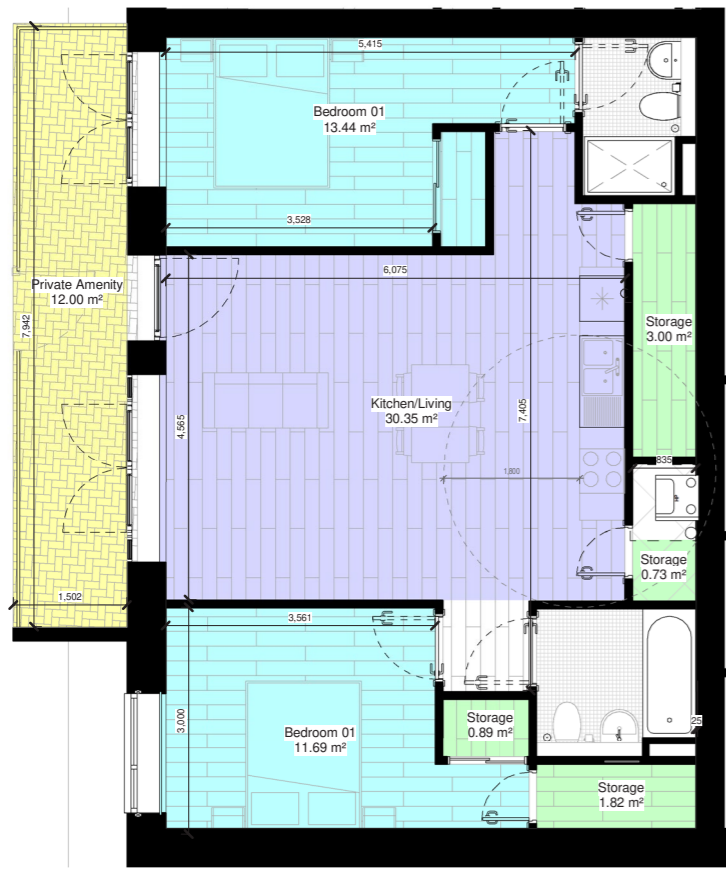
Drawing Notes:

Issues & Revisions		
Rev.	Date	Details of Issue / Revision

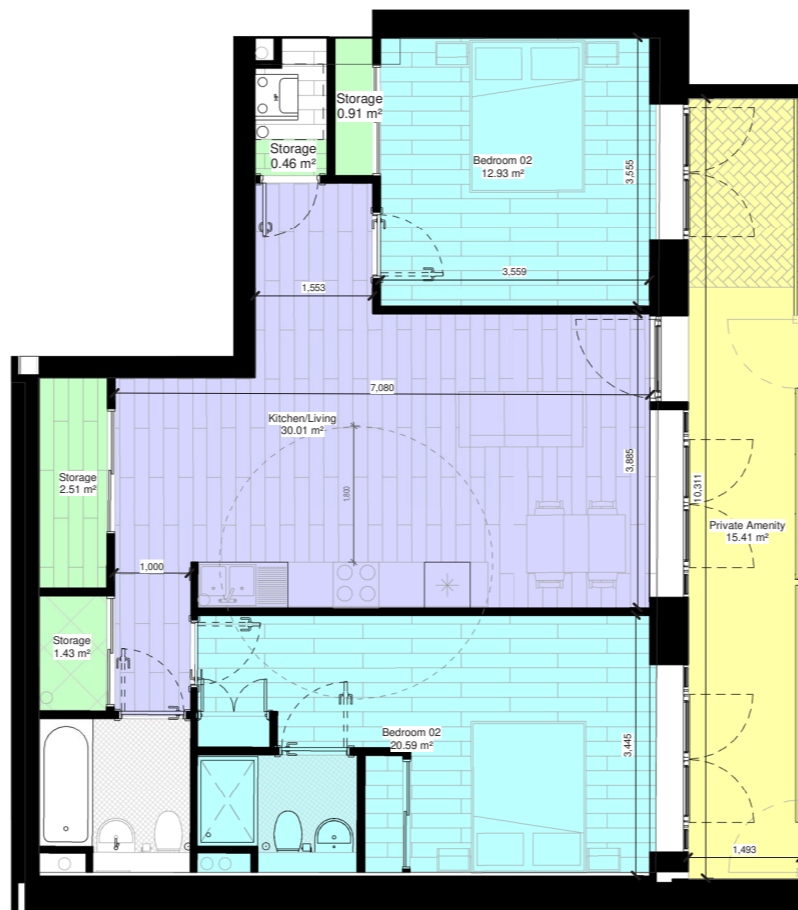
reddy a+u
 Dartry Mills,
 Dartry Road
 Dublin 6,
 D06 Y0E3
 T: +353 (0)1 498 7000
 W: www.reddyarchitecture.com
 E: info@reddyarchitecture.com

Client Details:
M.B McNamara Construction

Project Details:			Drawing Title:	
Apartments, Cookstown, Tallaght Second Avenue			Section 146b - 1-Bed Apartment Type Sheet	
Job No: P21-134D	Sheet Size:	Scale @A1: 1 : 50	Status:	Purpose of Issue:
Issue Date: 09/22/21	Drawn By: Author	Reviewed By: Approver	Project - System - Spatial Zone - Level - Type - Originator - Role - Number CRD-Z-RAU-	



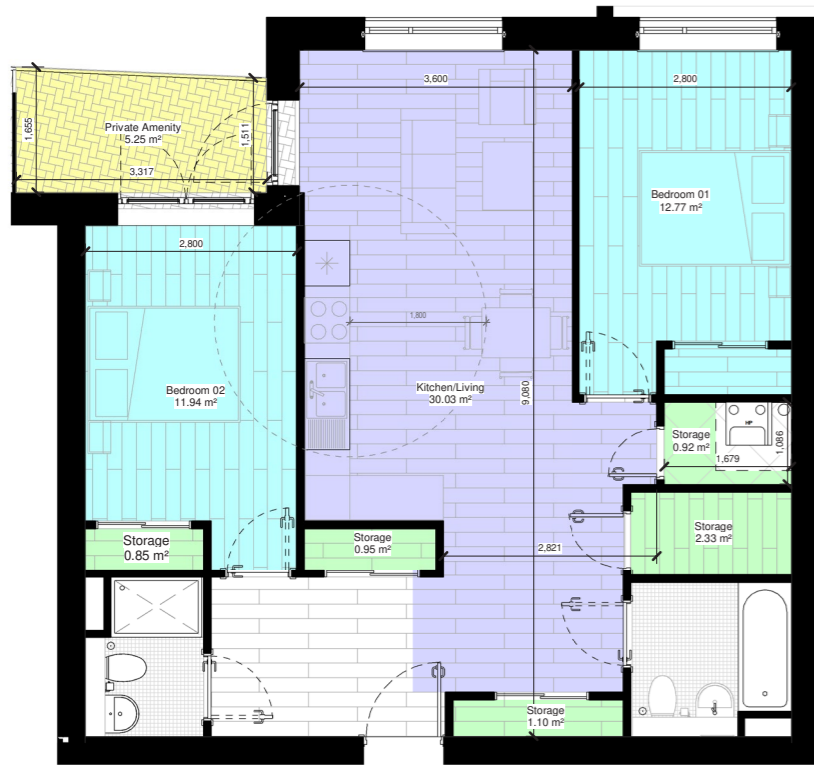
2 Bed 4P Type 1
1 : 50



2 Bed 4P Type 2
1 : 50



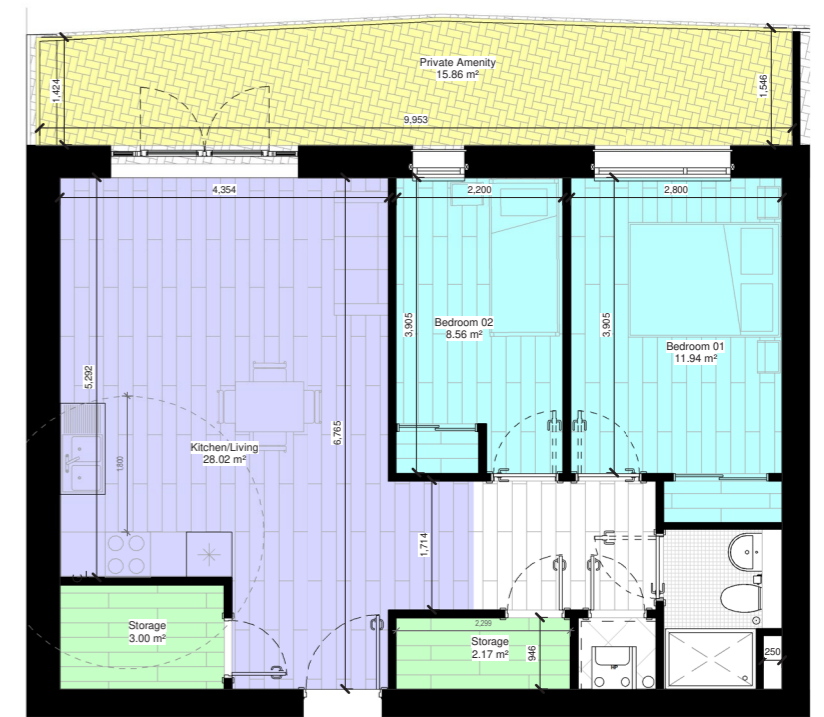
2 Bed 4P Type 3
1 : 50



2 Bed 4P Type 4
1 : 50



2 Bed 4P Type 5
1 : 50



2 Bed Three Person Type 1
1 : 50

Notes:
 - Do not scale from this drawing. Use figured dimensions in all cases.
 - Verify dimensions on site and report any discrepancies to the Architect immediately.
 - This drawing to be read in conjunction with the Architect's Specification.
 - © This drawing is copyright and may only be reproduced with the Architect's permission.

Drawing Notes:

Issues & Revisions		
Rev.	Date	Details of Issue / Revision

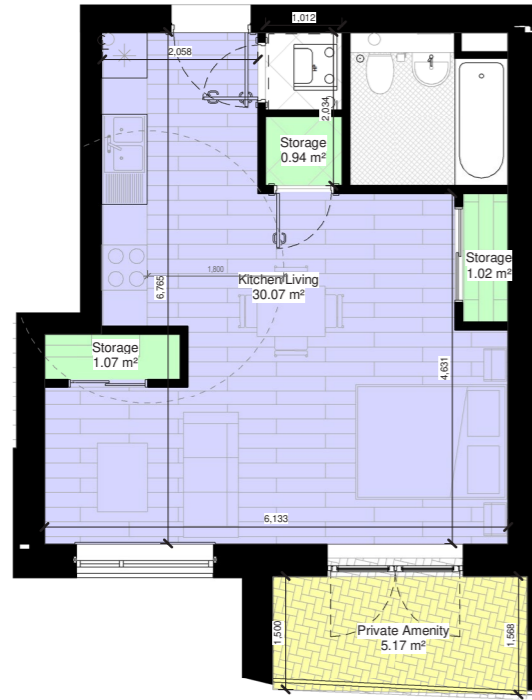
reddy a+u
 Dartry Mills,
 Dartry Road
 Dublin 6,
 D06 Y0E3
 T: +353 (0)1 498 7000
 W: www.reddyarchitecture.com
 E: info@reddyarchitecture.com

Client Details:
M.B McNamara Construction

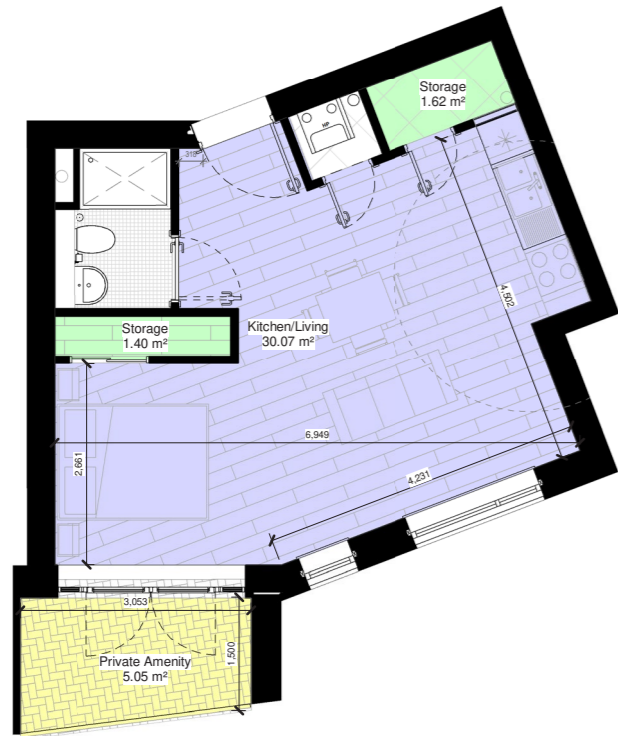
Project Details:
**Apartments, Cookstown, Tallaght
 Second Avenue**

Drawing Title:
Section 146b - 2-Bed Apartment Type Sheet

Job No: P21-134D	Sheet Size:	Scale @A1: 1 : 50	Status	Purpose of Issue
Issue Date: 09/22/21	Drawn By: Author	Reviewed By: Approver	Project - System - Spatial Zone - Level - Type - Originator - Role - Number CRD-Z-RAU-	



Studio Apartment Type 1
1 : 50



Studio Apartment Type 2
1 : 50

Notes:
 - Do not scale from this drawing. Use figured dimensions in all cases.
 - Verify dimensions on site and report any discrepancies to the Architect immediately.
 - This drawing to be read in conjunction with the Architect's Specification.
 - © This drawing is copyright and may only be reproduced with the Architect's permission.

Drawing Notes:

Issues & Revisions			
Rev.	Date	Drawn	Details of Issue / Revision



Dartry Mills,
 Dartry Road
 Dublin 6,
 D06 Y0E3
 T: +353 (0)1 498 7000
 W: www.reddyarchitecture.com
 E: info@reddyarchitecture.com

Client Details:
M.B McNamara Construction

Project Details:			Drawing Title:	
Apartments, Cookstown, Tallaght Second Avenue			Section 146b - Studio Apartment Type Sheet	
Job No: P21-134D	Sheet Size:	Scale @A1: 1 : 50	Status	Purpose of Issue
Issue Date: 09/24/21	Drawn By: Author	Reviewed By: Approver	Project - Spatial Zone - Level - Type - Originator - Role - Number CRD-Z-RAU-	