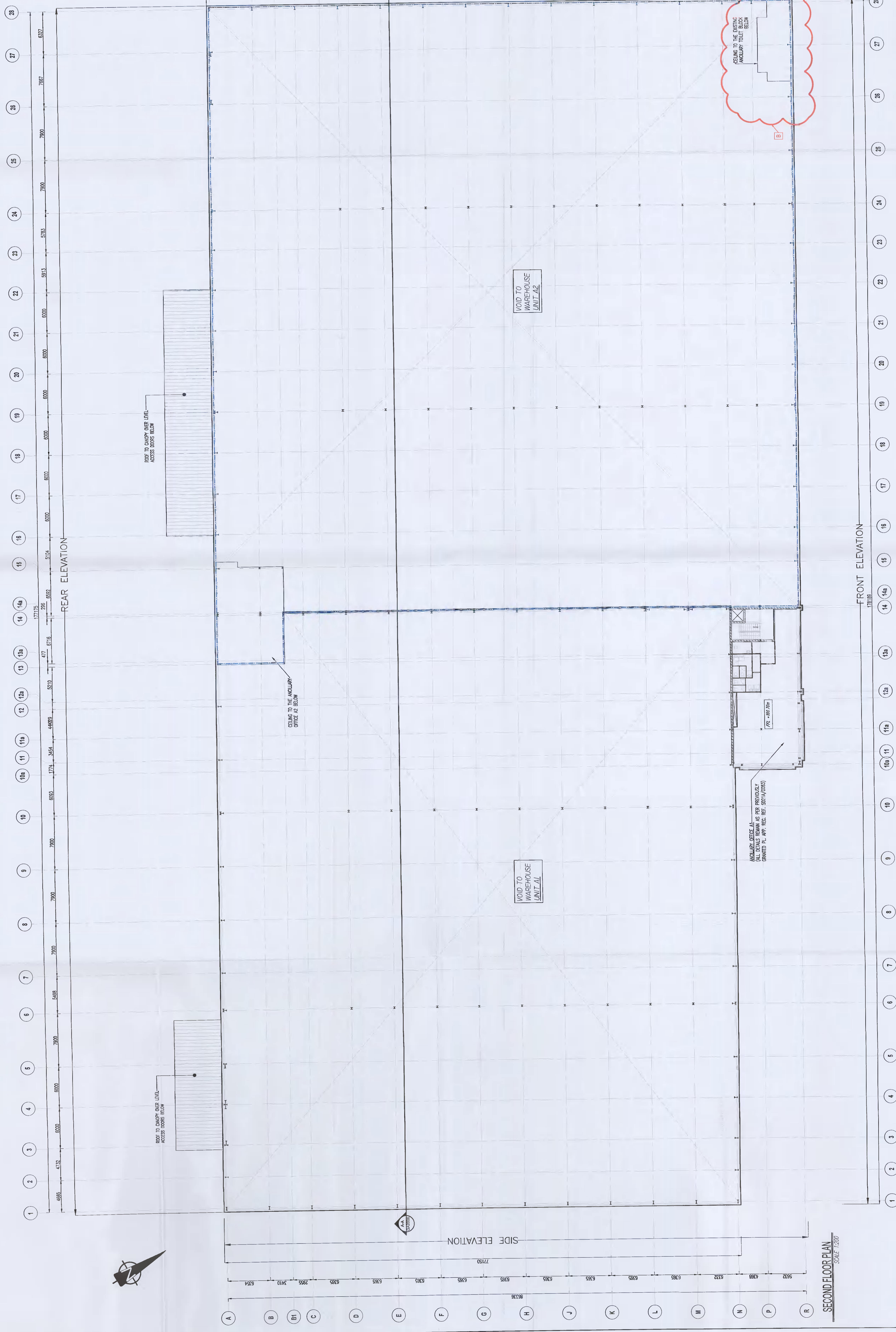


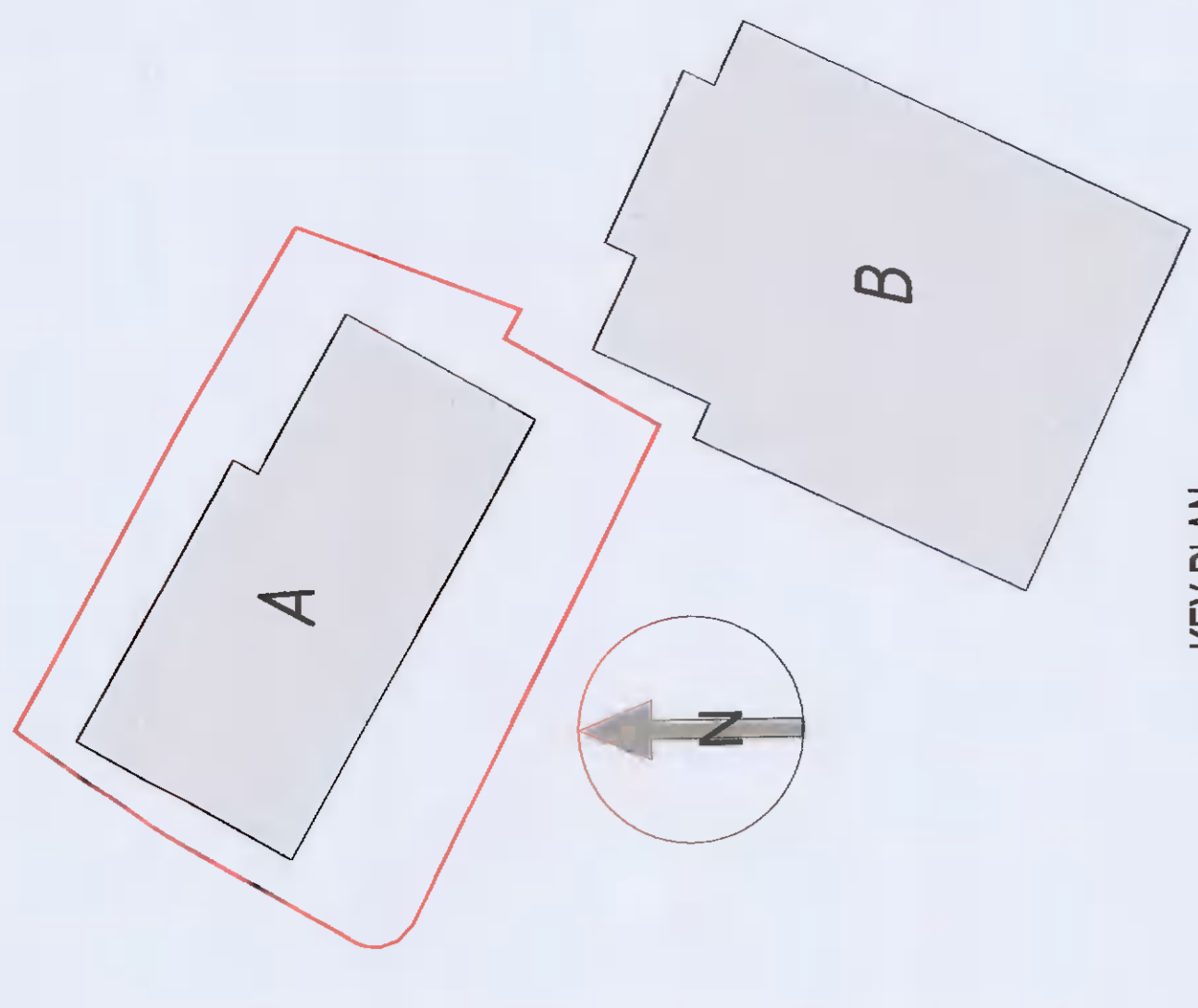
TABLE OF EXISTING INTERNAL FLOOR LEVELS

LEVEL	DESCRIPTION	MARKING	HEIGHT (m)
0.000	FINISHED FLOOR LEVEL	FFL	0.000
0.150	CEILING	C	0.150
0.300	ROOF TO CANOPY OVER LEVEL	RC	0.300
0.450	ROOF TO CANOPY OVER LEVEL	RC	0.450
0.600	ROOF TO CANOPY OVER LEVEL	RC	0.600
0.750	ROOF TO CANOPY OVER LEVEL	RC	0.750
0.900	ROOF TO CANOPY OVER LEVEL	RC	0.900
1.050	ROOF TO CANOPY OVER LEVEL	RC	1.050
1.200	ROOF TO CANOPY OVER LEVEL	RC	1.200
1.350	ROOF TO CANOPY OVER LEVEL	RC	1.350
1.500	ROOF TO CANOPY OVER LEVEL	RC	1.500
1.650	ROOF TO CANOPY OVER LEVEL	RC	1.650
1.800	ROOF TO CANOPY OVER LEVEL	RC	1.800
1.950	ROOF TO CANOPY OVER LEVEL	RC	1.950
2.100	ROOF TO CANOPY OVER LEVEL	RC	2.100
2.250	ROOF TO CANOPY OVER LEVEL	RC	2.250
2.400	ROOF TO CANOPY OVER LEVEL	RC	2.400
2.550	ROOF TO CANOPY OVER LEVEL	RC	2.550
2.700	ROOF TO CANOPY OVER LEVEL	RC	2.700
2.850	ROOF TO CANOPY OVER LEVEL	RC	2.850
3.000	ROOF TO CANOPY OVER LEVEL	RC	3.000
3.150	ROOF TO CANOPY OVER LEVEL	RC	3.150
3.300	ROOF TO CANOPY OVER LEVEL	RC	3.300
3.450	ROOF TO CANOPY OVER LEVEL	RC	3.450
3.600	ROOF TO CANOPY OVER LEVEL	RC	3.600
3.750	ROOF TO CANOPY OVER LEVEL	RC	3.750
3.900	ROOF TO CANOPY OVER LEVEL	RC	3.900
4.050	ROOF TO CANOPY OVER LEVEL	RC	4.050
4.200	ROOF TO CANOPY OVER LEVEL	RC	4.200
4.350	ROOF TO CANOPY OVER LEVEL	RC	4.350
4.500	ROOF TO CANOPY OVER LEVEL	RC	4.500
4.650	ROOF TO CANOPY OVER LEVEL	RC	4.650
4.800	ROOF TO CANOPY OVER LEVEL	RC	4.800
4.950	ROOF TO CANOPY OVER LEVEL	RC	4.950
5.100	ROOF TO CANOPY OVER LEVEL	RC	5.100
5.250	ROOF TO CANOPY OVER LEVEL	RC	5.250
5.400	ROOF TO CANOPY OVER LEVEL	RC	5.400
5.550	ROOF TO CANOPY OVER LEVEL	RC	5.550
5.700	ROOF TO CANOPY OVER LEVEL	RC	5.700
5.850	ROOF TO CANOPY OVER LEVEL	RC	5.850
6.000	ROOF TO CANOPY OVER LEVEL	RC	6.000
6.150	ROOF TO CANOPY OVER LEVEL	RC	6.150
6.300	ROOF TO CANOPY OVER LEVEL	RC	6.300
6.450	ROOF TO CANOPY OVER LEVEL	RC	6.450
6.600	ROOF TO CANOPY OVER LEVEL	RC	6.600
6.750	ROOF TO CANOPY OVER LEVEL	RC	6.750
6.900	ROOF TO CANOPY OVER LEVEL	RC	6.900
7.050	ROOF TO CANOPY OVER LEVEL	RC	7.050
7.200	ROOF TO CANOPY OVER LEVEL	RC	7.200
7.350	ROOF TO CANOPY OVER LEVEL	RC	7.350
7.500	ROOF TO CANOPY OVER LEVEL	RC	7.500
7.650	ROOF TO CANOPY OVER LEVEL	RC	7.650
7.800	ROOF TO CANOPY OVER LEVEL	RC	7.800
7.950	ROOF TO CANOPY OVER LEVEL	RC	7.950
8.100	ROOF TO CANOPY OVER LEVEL	RC	8.100
8.250	ROOF TO CANOPY OVER LEVEL	RC	8.250
8.400	ROOF TO CANOPY OVER LEVEL	RC	8.400
8.550	ROOF TO CANOPY OVER LEVEL	RC	8.550
8.700	ROOF TO CANOPY OVER LEVEL	RC	8.700
8.850	ROOF TO CANOPY OVER LEVEL	RC	8.850
9.000	ROOF TO CANOPY OVER LEVEL	RC	9.000
9.150	ROOF TO CANOPY OVER LEVEL	RC	9.150
9.300	ROOF TO CANOPY OVER LEVEL	RC	9.300
9.450	ROOF TO CANOPY OVER LEVEL	RC	9.450
9.600	ROOF TO CANOPY OVER LEVEL	RC	9.600
9.750	ROOF TO CANOPY OVER LEVEL	RC	9.750
9.900	ROOF TO CANOPY OVER LEVEL	RC	9.900
10.050	ROOF TO CANOPY OVER LEVEL	RC	10.050
10.200	ROOF TO CANOPY OVER LEVEL	RC	10.200
10.350	ROOF TO CANOPY OVER LEVEL	RC	10.350
10.500	ROOF TO CANOPY OVER LEVEL	RC	10.500
10.650	ROOF TO CANOPY OVER LEVEL	RC	10.650
10.800	ROOF TO CANOPY OVER LEVEL	RC	10.800
10.950	ROOF TO CANOPY OVER LEVEL	RC	10.950
11.100	ROOF TO CANOPY OVER LEVEL	RC	11.100
11.250	ROOF TO CANOPY OVER LEVEL	RC	11.250
11.400	ROOF TO CANOPY OVER LEVEL	RC	11.400
11.550	ROOF TO CANOPY OVER LEVEL	RC	11.550
11.700	ROOF TO CANOPY OVER LEVEL	RC	11.700
11.850	ROOF TO CANOPY OVER LEVEL	RC	11.850
12.000	ROOF TO CANOPY OVER LEVEL	RC	12.000
12.150	ROOF TO CANOPY OVER LEVEL	RC	12.150
12.300	ROOF TO CANOPY OVER LEVEL	RC	12.300
12.450	ROOF TO CANOPY OVER LEVEL	RC	12.450
12.600	ROOF TO CANOPY OVER LEVEL	RC	12.600
12.750	ROOF TO CANOPY OVER LEVEL	RC	12.750
12.900	ROOF TO CANOPY OVER LEVEL	RC	12.900
13.050	ROOF TO CANOPY OVER LEVEL	RC	13.050
13.200	ROOF TO CANOPY OVER LEVEL	RC	13.200
13.350	ROOF TO CANOPY OVER LEVEL	RC	13.350
13.500	ROOF TO CANOPY OVER LEVEL	RC	13.500
13.650	ROOF TO CANOPY OVER LEVEL	RC	13.650
13.800	ROOF TO CANOPY OVER LEVEL	RC	13.800
13.950	ROOF TO CANOPY OVER LEVEL	RC	13.950
14.100	ROOF TO CANOPY OVER LEVEL	RC	14.100
14.250	ROOF TO CANOPY OVER LEVEL	RC	14.250
14.400	ROOF TO CANOPY OVER LEVEL	RC	14.400
14.550	ROOF TO CANOPY OVER LEVEL	RC	14.550
14.700	ROOF TO CANOPY OVER LEVEL	RC	14.700
14.850	ROOF TO CANOPY OVER LEVEL	RC	14.850
15.000	ROOF TO CANOPY OVER LEVEL	RC	15.000
15.150	ROOF TO CANOPY OVER LEVEL	RC	15.150
15.300	ROOF TO CANOPY OVER LEVEL	RC	15.300
15.450	ROOF TO CANOPY OVER LEVEL	RC	15.450
15.600	ROOF TO CANOPY OVER LEVEL	RC	15.600
15.750	ROOF TO CANOPY OVER LEVEL	RC	15.750
15.900	ROOF TO CANOPY OVER LEVEL	RC	15.900
16.050	ROOF TO CANOPY OVER LEVEL	RC	16.050
16.200	ROOF TO CANOPY OVER LEVEL	RC	16.200
16.350	ROOF TO CANOPY OVER LEVEL	RC	16.350
16.500	ROOF TO CANOPY OVER LEVEL	RC	16.500
16.650	ROOF TO CANOPY OVER LEVEL	RC	16.650
16.800	ROOF TO CANOPY OVER LEVEL	RC	16.800
16.950	ROOF TO CANOPY OVER LEVEL	RC	16.950
17.100	ROOF TO CANOPY OVER LEVEL	RC	17.100
17.250	ROOF TO CANOPY OVER LEVEL	RC	17.250
17.400	ROOF TO CANOPY OVER LEVEL	RC	17.400
17.550	ROOF TO CANOPY OVER LEVEL	RC	17.550
17.700	ROOF TO CANOPY OVER LEVEL	RC	17.700
17.850	ROOF TO CANOPY OVER LEVEL	RC	17.850
18.000	ROOF TO CANOPY OVER LEVEL	RC	18.000
18.150	ROOF TO CANOPY OVER LEVEL	RC	18.150
18.300	ROOF TO CANOPY OVER LEVEL	RC	18.300
18.450	ROOF TO CANOPY OVER LEVEL	RC	18.450
18.600	ROOF TO CANOPY OVER LEVEL	RC	18.600
18.750	ROOF TO CANOPY OVER LEVEL	RC	18.750
18.900	ROOF TO CANOPY OVER LEVEL	RC	18.900
19.050	ROOF TO CANOPY OVER LEVEL	RC	19.050
19.200	ROOF TO CANOPY OVER LEVEL	RC	19.200
19.350	ROOF TO CANOPY OVER LEVEL	RC	19.350
19.500	ROOF TO CANOPY OVER LEVEL	RC	19.500
19.650	ROOF TO CANOPY OVER LEVEL	RC	19.650
19.800	ROOF TO CANOPY OVER LEVEL	RC	19.800
19.950	ROOF TO CANOPY OVER LEVEL	RC	19.950
20.100	ROOF TO CANOPY OVER LEVEL	RC	20.100
20.250	ROOF TO CANOPY OVER LEVEL	RC	20.250
20.400	ROOF TO CANOPY OVER LEVEL	RC	20.400
20.550	ROOF TO CANOPY OVER LEVEL	RC	20.550
20.700	ROOF TO CANOPY OVER LEVEL	RC	20.700
20.850	ROOF TO CANOPY OVER LEVEL	RC	20.850
21.000	ROOF TO CANOPY OVER LEVEL	RC	21.000
21.150	ROOF TO CANOPY OVER LEVEL	RC	21.150
21.300	ROOF TO CANOPY OVER LEVEL	RC	21.300
21.450	ROOF TO CANOPY OVER LEVEL	RC	21.450
21.600	ROOF TO CANOPY OVER LEVEL	RC	21.600
21.750	ROOF TO CANOPY OVER LEVEL	RC	21.750
21.900	ROOF TO CANOPY OVER LEVEL	RC	21.900
22.050	ROOF TO CANOPY OVER LEVEL	RC	22.050
22.200	ROOF TO CANOPY OVER LEVEL	RC	22.200
22.350	ROOF TO CANOPY OVER LEVEL	RC	22.350
22.500	ROOF TO CANOPY OVER LEVEL	RC	22.500
22.650	ROOF TO CANOPY OVER LEVEL	RC	22.650
22.800	ROOF TO CANOPY OVER LEVEL	RC	22.800
22.950	ROOF TO CANOPY OVER LEVEL	RC	22.950
23.100	ROOF TO CANOPY OVER LEVEL	RC	23.100
23.250	ROOF TO CANOPY OVER LEVEL	RC	23.250
23.400	ROOF TO CANOPY OVER LEVEL	RC	23.400
23.550	ROOF TO CANOPY OVER LEVEL	RC	23.550
23.700	ROOF TO CANOPY OVER LEVEL	RC	23.700
23.850	ROOF TO CANOPY OVER LEVEL	RC	23.850
24.000	ROOF TO CANOPY OVER LEVEL	RC	24.000
24.150	ROOF TO CANOPY OVER LEVEL	RC	24.150
24.300	ROOF TO CANOPY OVER LEVEL	RC	24.300
24.450	ROOF TO CANOPY OVER LEVEL	RC	24.450
24.600	ROOF TO CANOPY OVER LEVEL	RC	24.600
24.750	ROOF TO CANOPY OVER LEVEL	RC	24.750
24.900	ROOF TO CANOPY OVER LEVEL	RC	24.900
25.050	ROOF TO CANOPY OVER LEVEL	RC	25.050
25.200	ROOF TO CANOPY OVER LEVEL	RC	25.200
25.350	ROOF TO CANOPY OVER LEVEL	RC	25.350
25.500	ROOF TO CANOPY OVER LEVEL	RC	25.500
25.650	ROOF TO CANOPY OVER LEVEL	RC	25.650
25.800	ROOF TO CANOPY OVER LEVEL	RC	25.800
25.950	ROOF TO CANOPY OVER LEVEL	RC	25.950
26.100	ROOF TO CANOPY OVER LEVEL	RC	26.100
26.250	ROOF TO CANOPY OVER LEVEL	RC	26.250
26.400	ROOF TO CANOPY OVER LEVEL	RC	26.400
26.550	ROOF TO CANOPY OVER LEVEL	RC	26.550
26.700	ROOF TO CANOPY OVER LEVEL	RC	26.700
26.850	ROOF TO CANOPY OVER LEVEL	RC	26.850
27.000	ROOF TO CANOPY OVER LEVEL	RC	27.000
27.150	ROOF TO CANOPY OVER LEVEL	RC	27.150
27.300	ROOF TO CANOPY OVER LEVEL	RC	27.300
27.450	ROOF TO CANOPY OVER LEVEL	RC	27.450
27.600	ROOF TO CANOPY OVER LEVEL	RC	27.600
27.750	ROOF TO CANOPY OVER LEVEL	RC	27.750
27.900	ROOF TO CANOPY OVER LEVEL	RC	27.900
28.050	ROOF TO CANOPY OVER LEVEL	RC	28.050



ALTERATIONS DESCRIPTION:
 Alterations refer to subdivided Unit A2 only and are shown in red. Existing structures are shown in grey which is no longer required as part of the development.
 The results of:
 - Change of use of 133m² ancillary office/staff facilities area on the ground floor to warehouse area, and
 - Provision of 17m² ancillary office/staff facilities area on the first floor.
 All other details remain as per the granted application No. P/1627/A/0063.

KEY PLAN
 SCALE: 1:2500



SECOND FLOOR PLAN
 SCALE: 1:200

<p>KAVANAGH BURKE CONSULTING ENGINEERS</p> <p>14, 15, 16, 17, 18, 19, 20, 21, 22, 23, 24, 25, 26, 27, 28, 29, 30, 31, 32, 33, 34, 35, 36, 37, 38, 39, 40, 41, 42, 43, 44, 45, 46, 47, 48, 49, 50, 51, 52, 53, 54, 55, 56, 57, 58, 59, 60, 61, 62, 63, 64, 65, 66, 67, 68, 69, 70, 71, 72, 73, 74, 75, 76, 77, 78, 79, 80, 81, 82, 83, 84, 85, 86, 87, 88, 89, 90, 91, 92, 93, 94, 95, 96, 97, 98, 99, 100, 101, 102, 103, 104, 105, 106, 107, 108, 109, 110, 111, 112, 113, 114, 115, 116, 117, 118, 119, 120, 121, 122, 123, 124, 125, 126, 127, 128, 129, 130, 131, 132, 133, 134, 135, 136, 137, 138, 139, 140, 141, 142, 143, 144, 145, 146, 147, 148, 149, 150, 151, 152, 153, 154, 155, 156, 157, 158, 159, 160, 161, 162, 163, 164, 165, 166, 167, 168, 169, 170, 171, 172, 173, 174, 175, 176, 177, 178, 179, 180, 181, 182, 183, 184, 185, 186, 187, 188, 189, 190, 191, 192, 193, 194, 195, 196, 197, 198, 199, 200, 201, 202, 203, 204, 205, 206, 207, 208, 209, 210, 211, 212, 213, 214, 215, 216, 217, 218, 219, 220, 221, 222, 223, 224, 225, 226, 227, 228, 229, 230, 231, 232, 233, 234, 235, 236, 237, 238, 239, 240, 241, 242, 243, 244, 245, 246, 247, 248, 249, 250, 251, 252, 253, 254, 255, 256, 257, 258, 259, 260, 261, 262, 263, 264, 265, 266, 267, 268, 269, 270, 271, 272, 273, 274, 275, 276, 277, 278, 279, 280, 281, 282, 283, 284, 285, 286, 287, 288, 289, 290, 291, 292, 293, 294, 295, 296, 297, 298, 299, 300, 301, 302, 303, 304, 305, 306, 307, 308, 309, 310, 311, 312, 313, 314, 315, 316, 317, 318, 319, 320, 321, 322, 323, 324, 325, 326, 327, 328, 329, 330, 331, 332, 333, 334, 335, 336, 337, 338, 339, 340, 341, 342, 343, 344, 345, 346, 347, 348, 349, 350, 351, 352, 353, 354, 355, 356, 357, 358, 359, 360, 361, 362, 363, 364, 365, 366, 367, 368, 369, 370, 371, 372, 373, 374, 375, 376, 377, 378, 379, 380, 381, 382, 383, 384, 385, 386, 387, 388, 389, 390, 391, 392, 393, 394, 395, 396, 397, 398, 399, 400, 401, 402, 403, 404, 405, 406, 407, 408, 409, 410, 411, 412, 413, 414, 415, 416, 417, 418, 419, 420, 421, 422, 423, 424, 425, 426, 427, 428, 429, 430, 431, 432, 433, 434, 435, 436, 437, 438, 439, 440, 441, </p>	
--	--