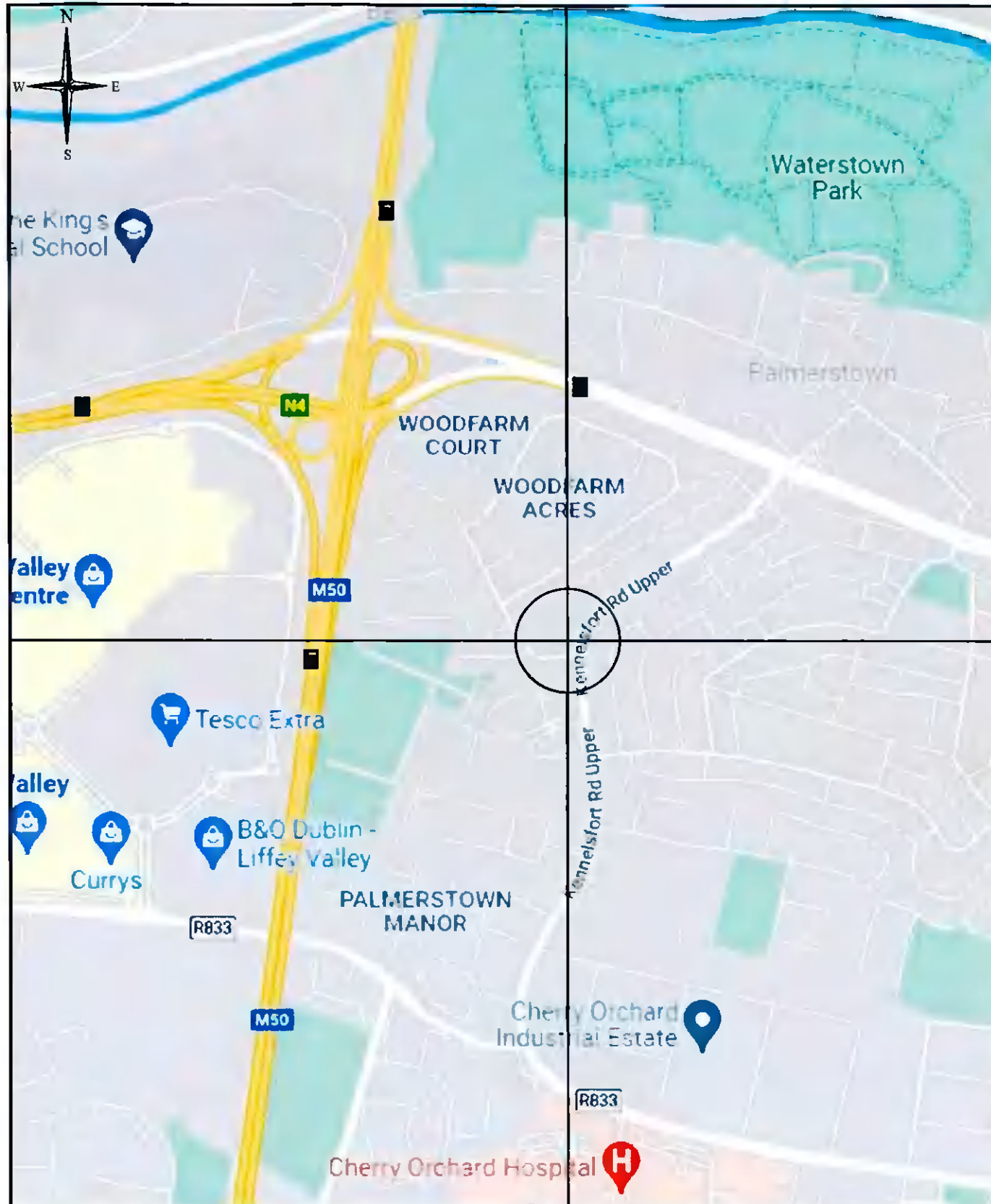


LOCATION MAP
(COPYRIGHT GOOGLE MAPS)



SITE PHOTOGRAPHS

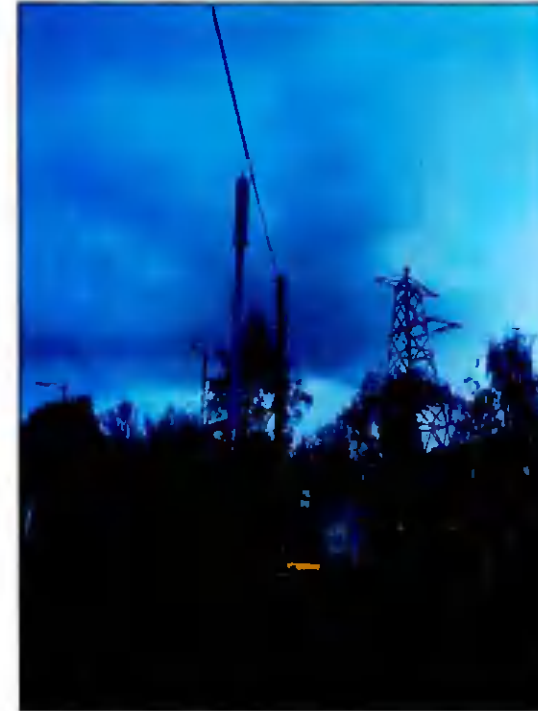


FIG 1. ELEVATION



FIG 2. PROPOSED MONOPOLE LOCATION

ALL DIMENSIONS ARE IN mm UNLESS NOTED OTHERWISE

SITE COORDINATES

ITM EASTING	707,909	LATITUDE	53° 21' 8.88" N
ITM NORTHING	734,808	LONGITUDE	-06° 22' 44.8" W

SITE ENTRANCE GPS COORDINATES

EASTING	308,028	LATITUDE	53° 21' 8.88" N
NORTHING	234,783	LONGITUDE	-06° 22' 42.3" W

1.0	PLANNING DRAWING	NB	ML	RM	06/01/2022
Rev	Modification	By	Ch	Ap	Date

THIS DRAWING IS THE PROPERTY OF ALLIED CONSULTANT ENGINEERING LTD. THE DRAWING CONTAINS DATA WHICH IS CONFIDENTIAL AND MAY ONLY BE USED FOR PURPOSES EXPRESSLY AGREED WITH ALLIED CONSULTANT ENGINEERING LTD. YOU MAY NOT USE, REUSE, TRANSMIT, PUBLISH OR EXPORT ALL OR PART OF THE DRAWING OR DATA IN ANY MANNER FOR ANY OTHER PURPOSE WITHOUT THE WRITTEN PERMISSION OF ALLIED CONSULTANT ENGINEERING LTD.



Site Name

PALMERSTOWN 38KV SUBSTATION

Site Address / Contact Details

KENNELSFORT ROAD UPPER
PALMERSTOWN
DUBLIN 20

Drawing Title: COVER SHEET

Purpose of Issue: PLANNING DRAWING

DRAWING NO.
ACE-EB-0046 -100

Date: 06/01/2022	DRAWN BY: NB	REVISION
Scale: AS SHOWN	APPROVED BY: RM	1.0

