

HAZARD IDENTIFICATION LEGEND:

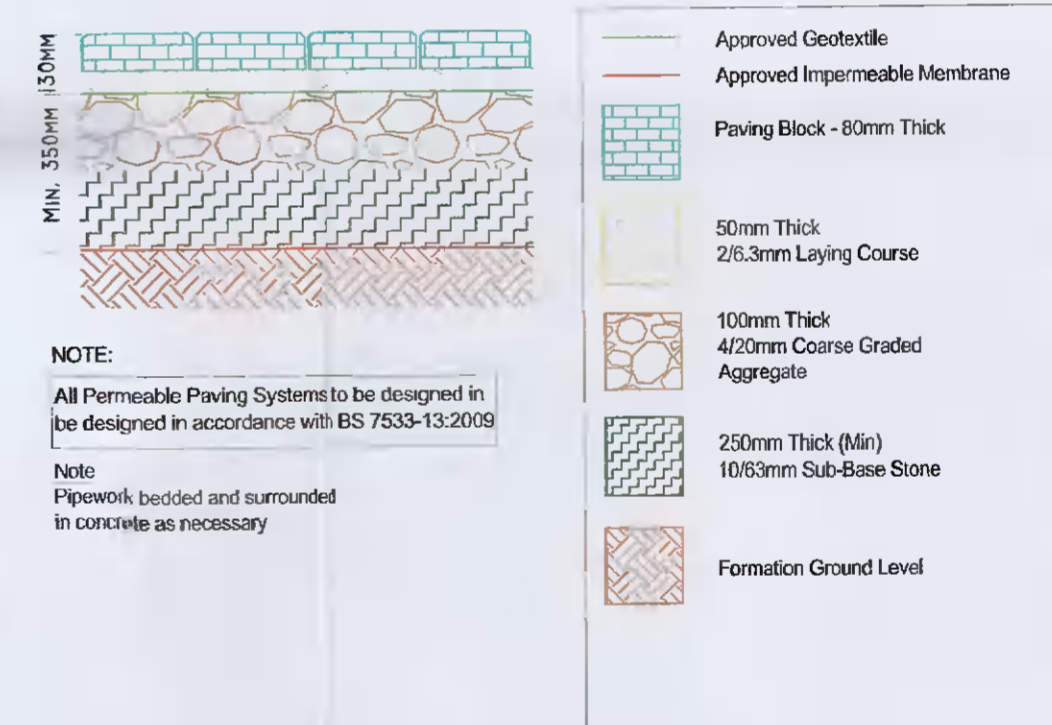
HAZARD IDENTIFICATION (if none state 'none relevant')	CONTROL AND MITIGATION MEASURES

NOTE:
 Hazards listed above are only those considered significant risks and:
 a) not likely to be obvious to a competent contractor or other designers;
 b) unusual; or
 c) likely to be difficult to manage effectively

- DRAINAGE NOTES:**
- ALL FOUL SEWERS, MANHOLES AND CONNECTIONS TO BE CONSTRUCTED IN ACCORDANCE WITH IRISH WATER CODE OF PRACTICE FOR WASTEWATER INFRASTRUCTURE AND IRISH WATER WASTEWATER INFRASTRUCTURE STANDARD DETAILS.
 - ALL FOUL SEWER HOUSE CONNECTIONS TO BE MIN 100mm Ø UPVC TO IS EN 1401 2009/2012, STIFFNESS CLASS 8KN/M2 IN ACCORDANCE WITH IRISH WATER SPECIFICATIONS.
 - ALL PUBLIC FOUL SEWERS TO BE MINIMUM 225mm DIAMETER THERMOPLASTIC STRUCTURED WALL PIPES TO IS EN 15746 (2007/2009), TYPE S10 AND WIS 4-35-01 (2008) AND COMPLY WITH THE REQUIREMENTS OF THE IRISH WATER CODE OF PRACTICE FOR DRAINAGE WORKS.
 - ALL PUBLIC SURFACE WATER SEWERS TO BE MINIMUM 225 DIA. CLASS H CONCRETE TO EN1916 8 IS 6 2004 IN ACCORDANCE WITH THE GREATER DUBLIN REGIONAL CODE OF PRACTICE FOR DRAINAGE WORKS.
 - ALL SURFACE WATER CONNECTIONS TO BE MINIMUM 150mm Ø UPVC TO IS EN 1401 2009/2012 IN ACCORDANCE WITH THE GREATER DUBLIN REGIONAL CODE OF PRACTICE FOR DRAINAGE WORKS.
 - LOCATION AND INVERT LEVELS OF EXISTING MANHOLES OR OUT-FALL POINTS, WHERE APPLICABLE TO BE VERIFIED BY CONTRACTOR PRIOR TO COMMENCEMENT OF DRAINAGE WORKS.
 - ALL FOUL CONNECTIONS TO COMPLY WITH THE REQUIREMENTS OF THE IRISH WATER.
 - ALL FOUL SEWERS TO BE AIR TESTED IN ACCORDANCE WITH IRISH WATER SPECIFICATIONS.
 - ALL COVER LEVELS TO MATCH FINISHED ROAD/VERGE/FOOTPATH/CYCLETRACK LEVELS UNLESS OTHERWISE STATED.
 - CONTRACTOR TO INCLUDE FOR CCTV SURVEY OF ALL SEWERS UPON COMPLETION OF SAME.



NOTE:
 REFER DRAWING DB080-PIN-00-ZZ-DR-C-PLAN-1296 FOR SUDS TYPICAL DETAILS
 REFER DRAWING DB080-PIN-00-ZZ-DR-C-PLAN-1207 FOR SURFACE WATER DRAINAGE LAYOUT



PLANNING REGISTRATION REFERENCE:
 SDZ1A/0186

DESIGN ISSUE
 THE DESIGN IS SUBJECT TO PLANNING APPROVAL AND DETAILED DESIGN.

NO	DATE	DESCRIPTION	OWN	CHK	APP
P03	08.02.22	CR RESPONSE	EA/RLM		
P02	17.08.21	ISSUED FOR TENDER	EA/RLM		
P01	02.02.22	ISSUED FOR APPROVAL	EA/RLM		

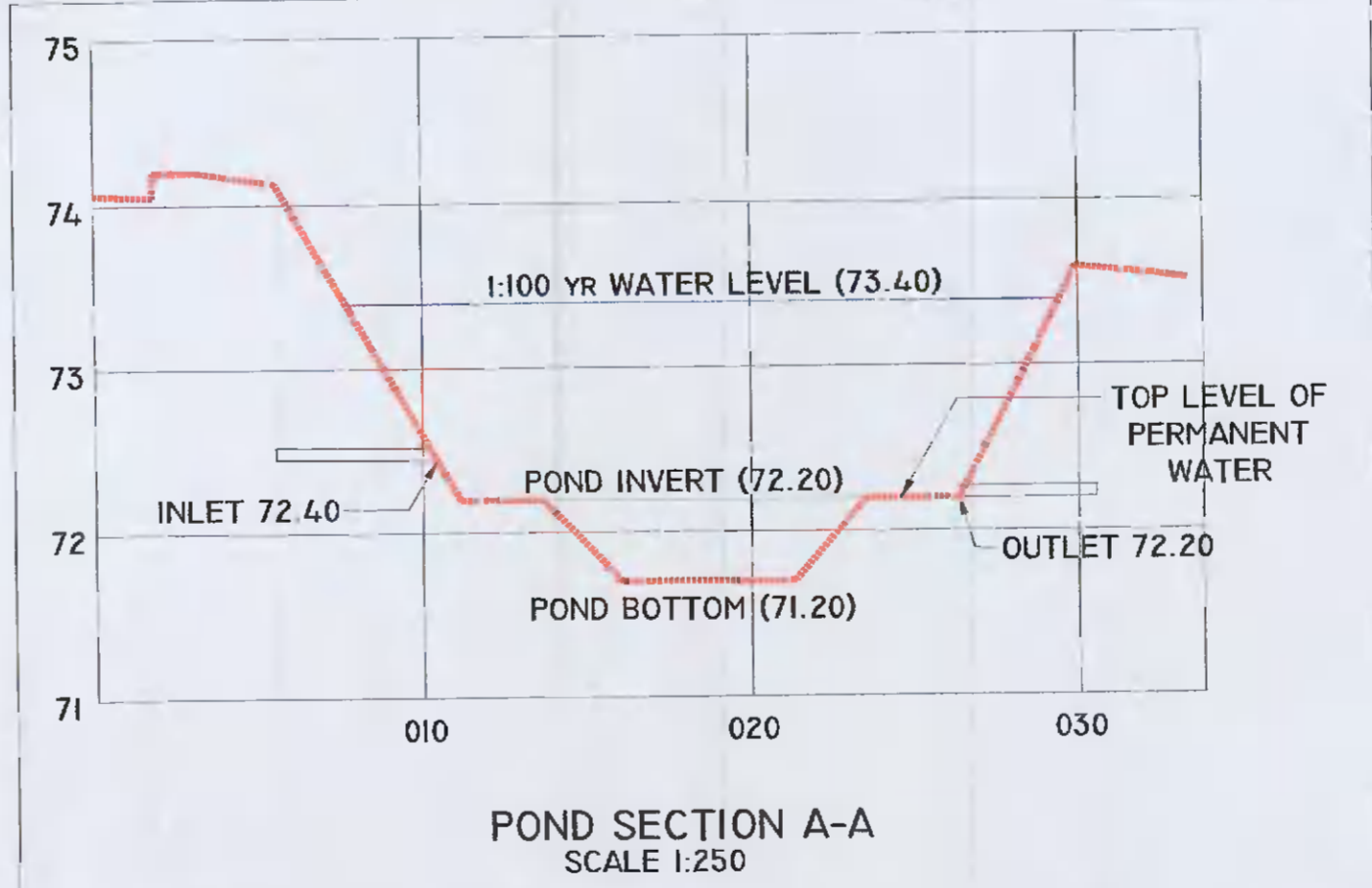
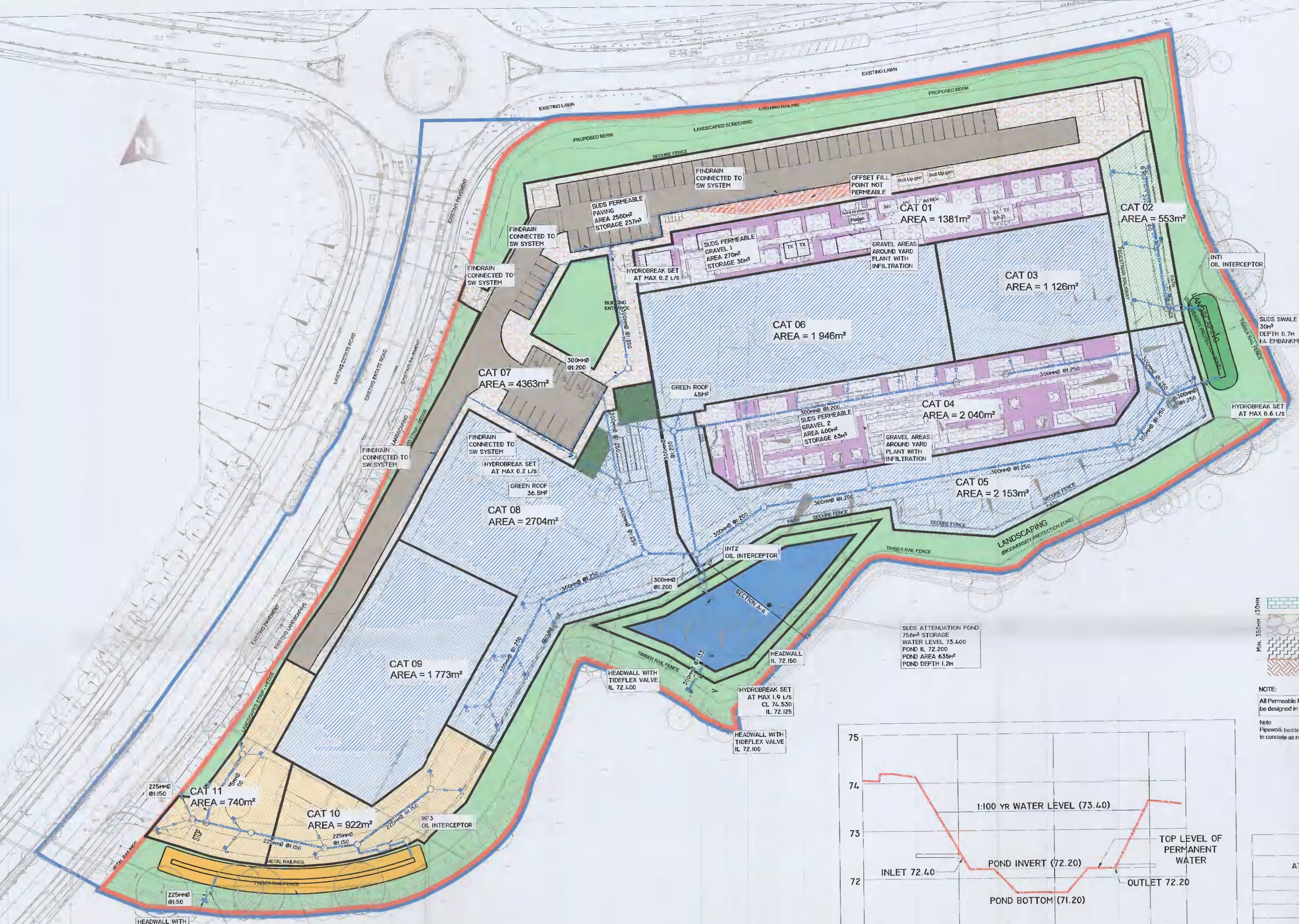
Key:

Project:
 EQUINIX DB081

Drawing Title:
 SURFACE WATER CATCHMENT AND SUDS FEATURES

Drawing Number:
 DB080-PIN-00-ZZ-DR-C-PLAN-1295

Scale: Paper Size: Purpose: Revision:
 1:500 A1 D2 P03



SITE ATTENUATION VOLUMES

ATTENUATION PROVIDED	HATCH	VOLUME (m³)
SUDS SWALE 1		30
SUDS POND 1		756
SUDS SWALE 2		70
PERMEABLE PAVING		237
PERMEABLE GRAVEL 1		30
PERMEABLE GRAVEL 2		63
GREEN ROOF (TO ARCHITECT DETAIL)		4
TOTAL		1 190

SITE CATCHMENT AREAS

CATCHMENT	HATCH	AREA (m²)	% AREA	C VALUE	GREENFIELD RUN OFF RATES L/S (GBAR 21.1/S/HA. SAAR 754)	DRAINS TO
CAT 1		1381	5.20%	0.5	0.28	SUDS PERMEABLE GRAVEL 1
CAT 2		553	2.1%	0.8	0.11	SUDS SWALE 1
CAT 3		1126	4.2%	1.0	0.23	SUDS POND
CAT 4		2040	7.6%	0.5	0.41	SUDS PERMEABLE GRAVEL 2
CAT 5		2153	8.0%	0.8	0.43	SUDS POND
CAT 6		1946	7.3%	1.0	0.39	SUDS POND
CAT 7		4363	16.3%	0.6	0.87	SUDS PERMEABLE PAVING
CAT 8		2704	10.1%	1.0	0.54	SUDS POND
CAT 9		1773	6.6%	0.5	0.35	SUDS POND
CAT 10		825	3.1%	0.8	0.17	SUDS SWALE 2
CAT 11		708	2.6%	0.8	0.14	SUDS SWALE 2
LANDSCAPING		7193	26.9%	0.8		LANDSCAPING
TOTAL		26 765	100%		3.9 L/S (GBAR)	

