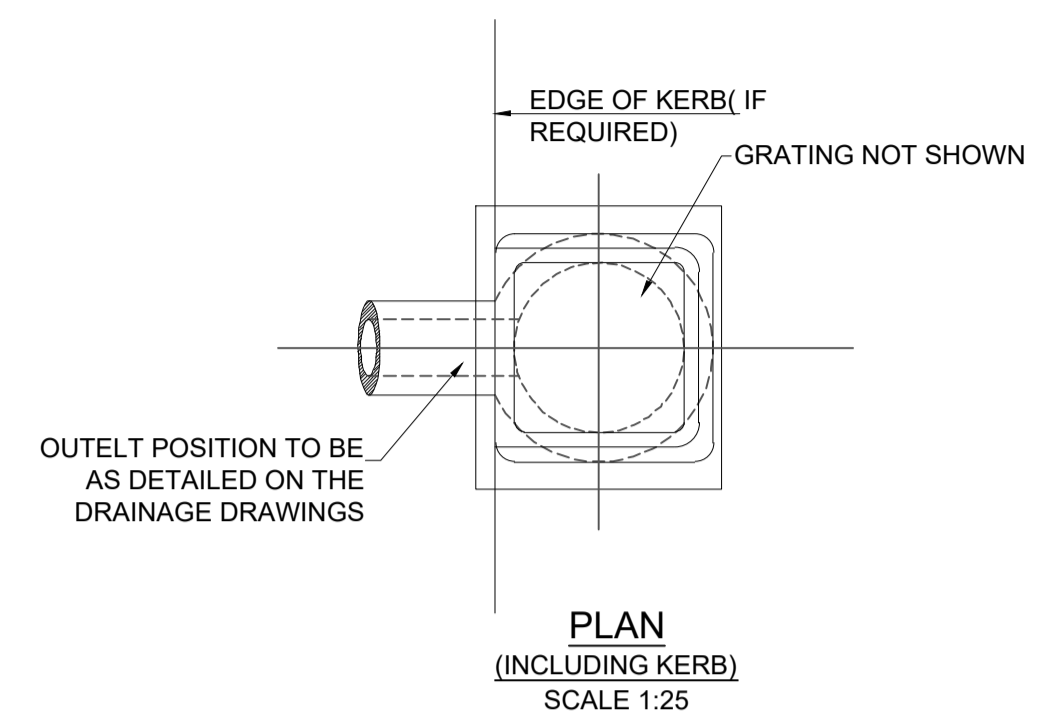
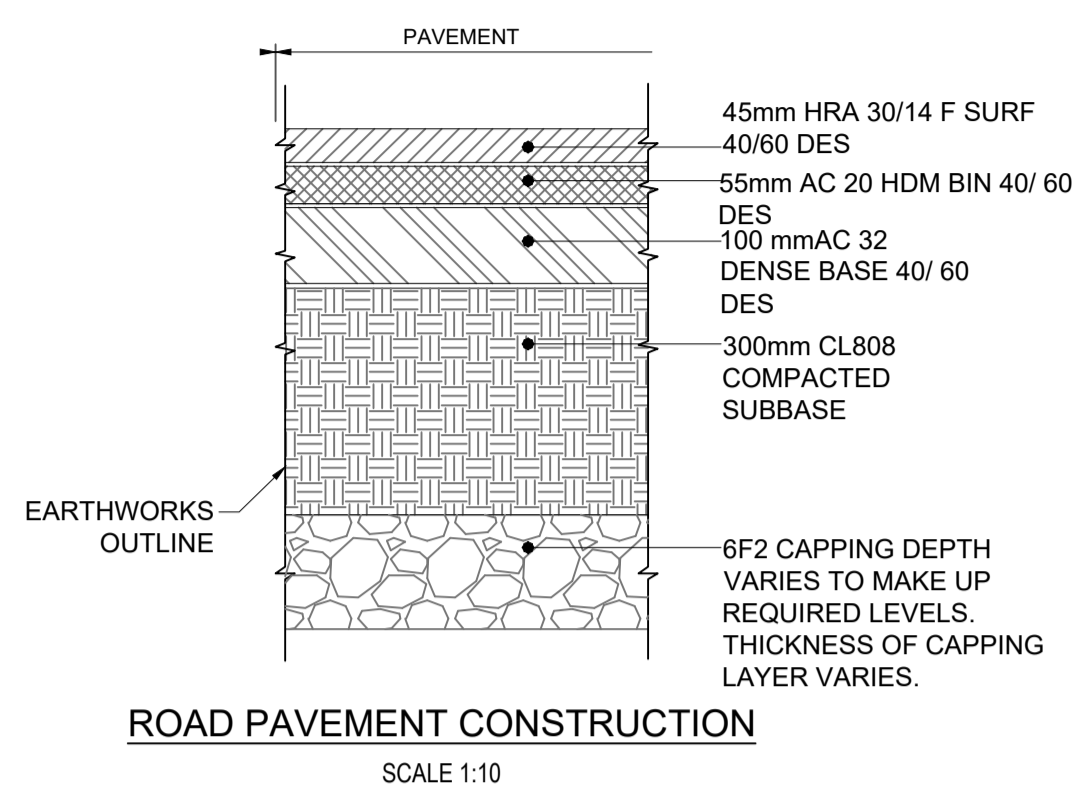


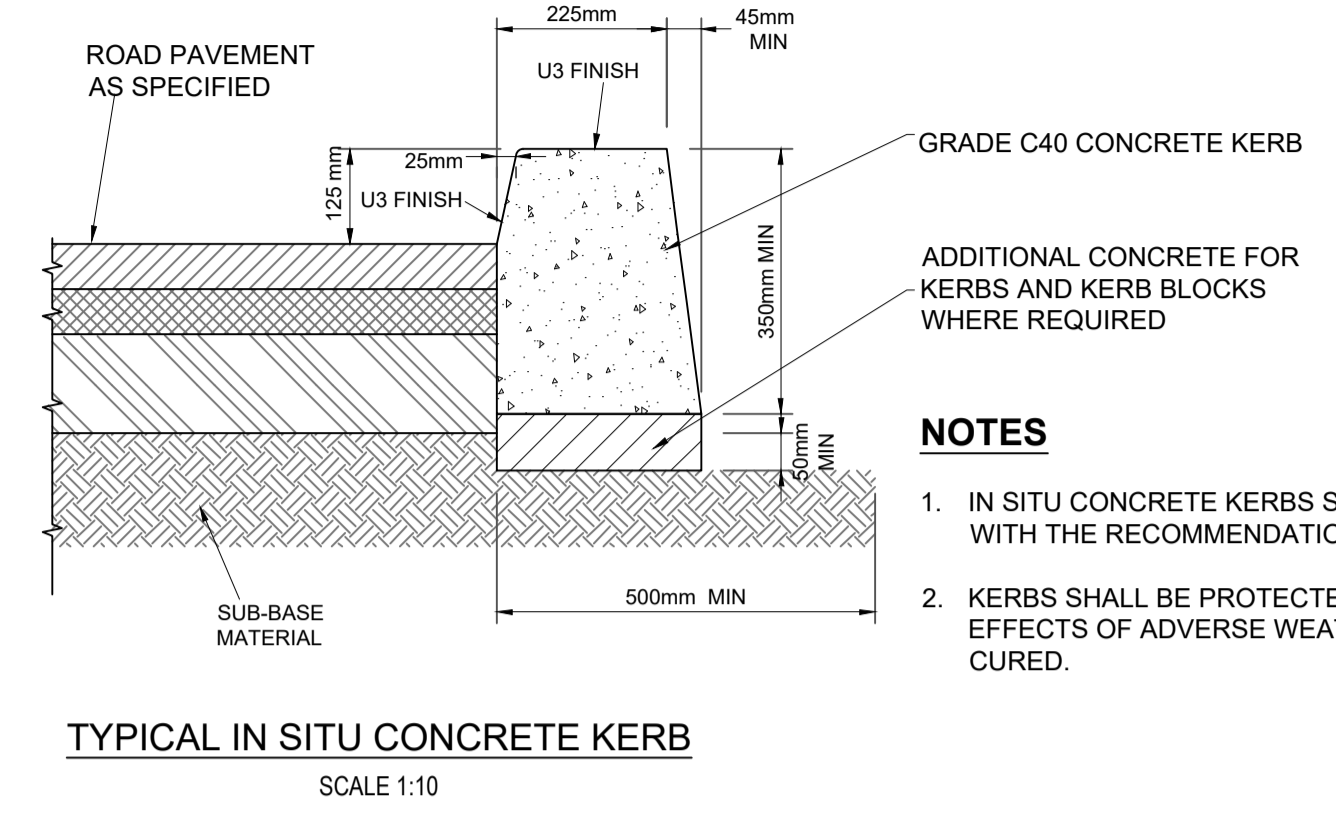
PRECAST CONCRETE GULLY (NEXT TO KERB)
SCALE 1:25



PLAN (INCLUDING KERB)
SCALE 1:25

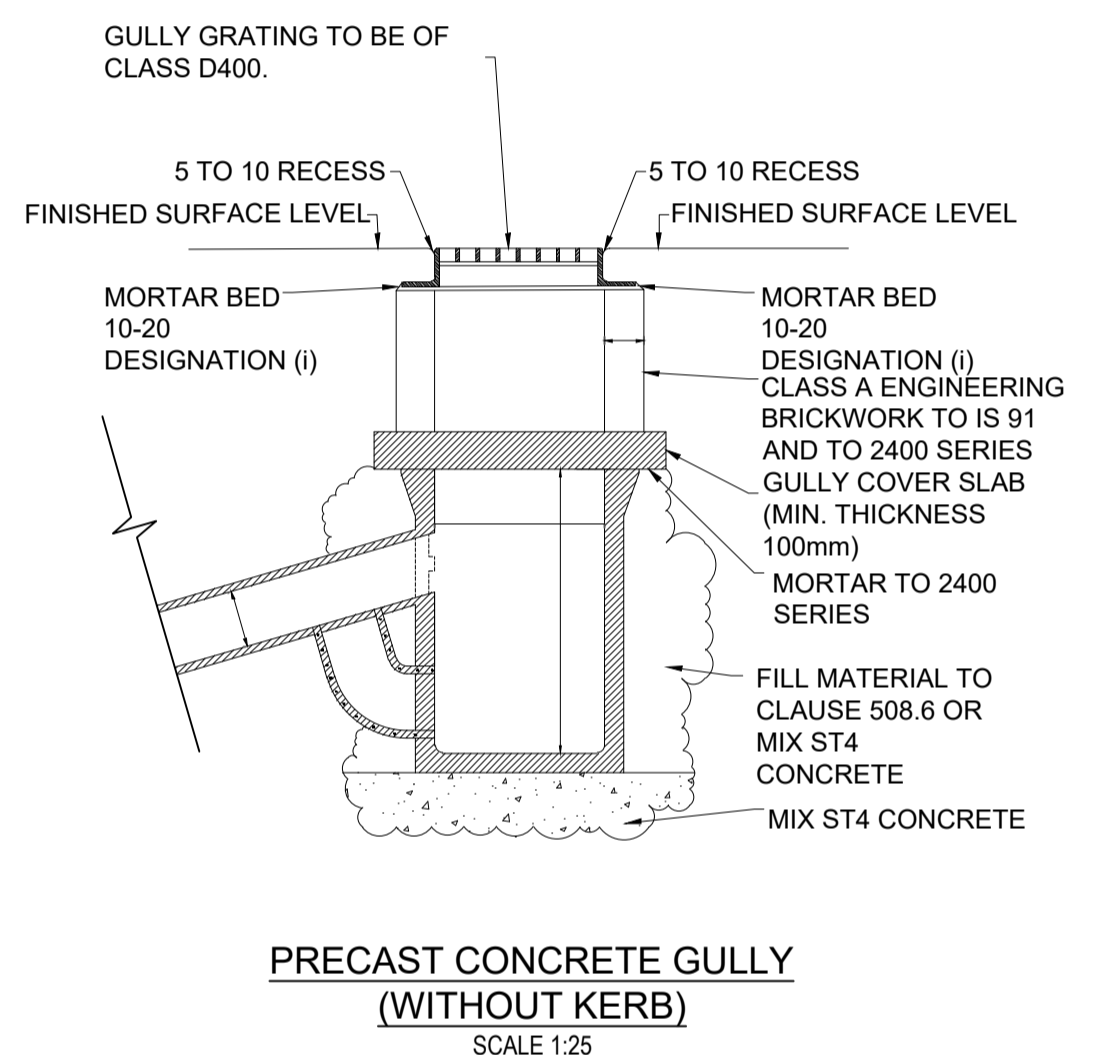


ROAD PAVEMENT CONSTRUCTION
SCALE 1:10

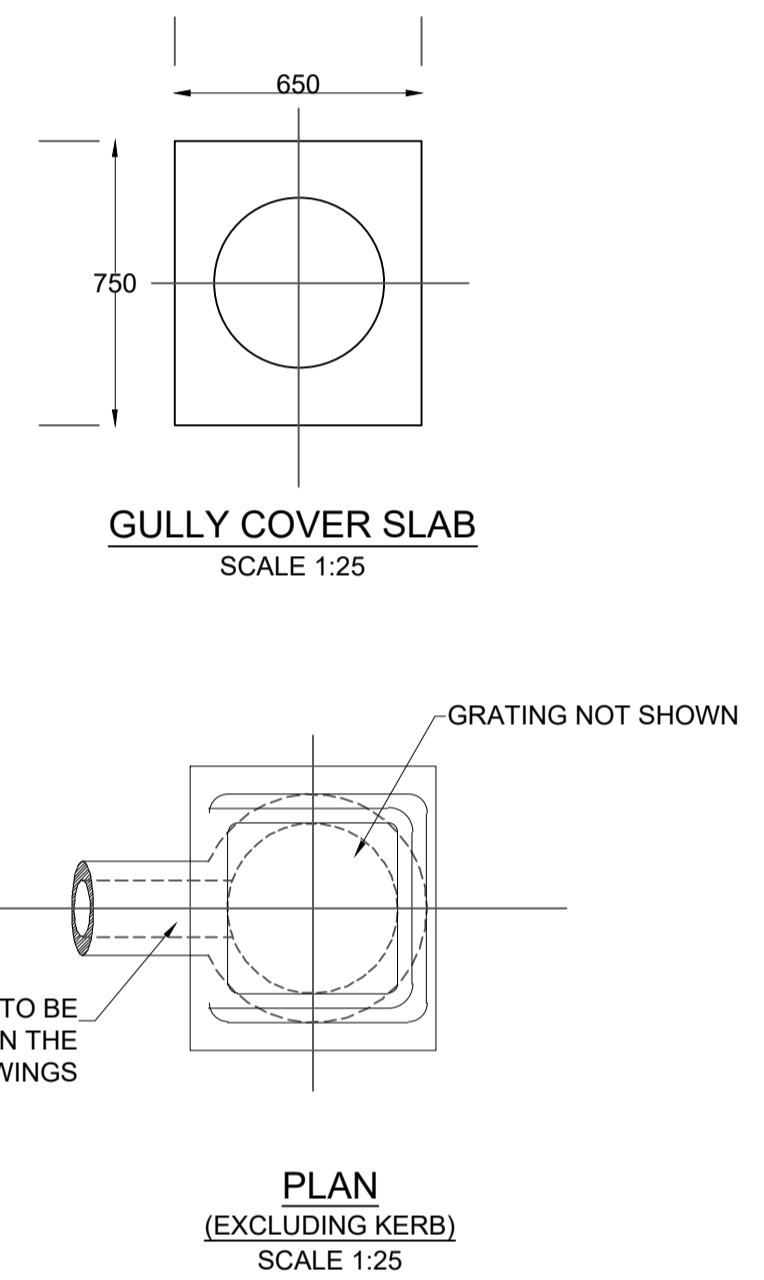


TYPICAL IN SITU CONCRETE KERB
SCALE 1:10

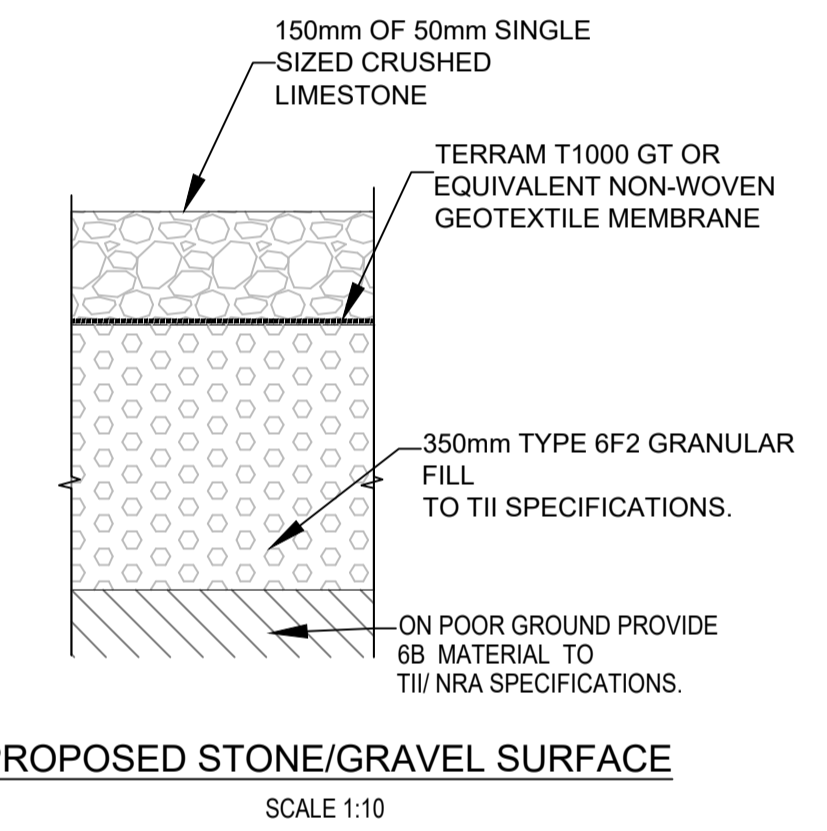
- NOTES**
1. IN SITU CONCRETE KERBS SHALL COMPLY WITH THE RECOMMENDATIONS OF B.S. 5931.
 2. KERBS SHALL BE PROTECTED FROM THE EFFECTS OF ADVERSE WEATHER UNTIL CURED.



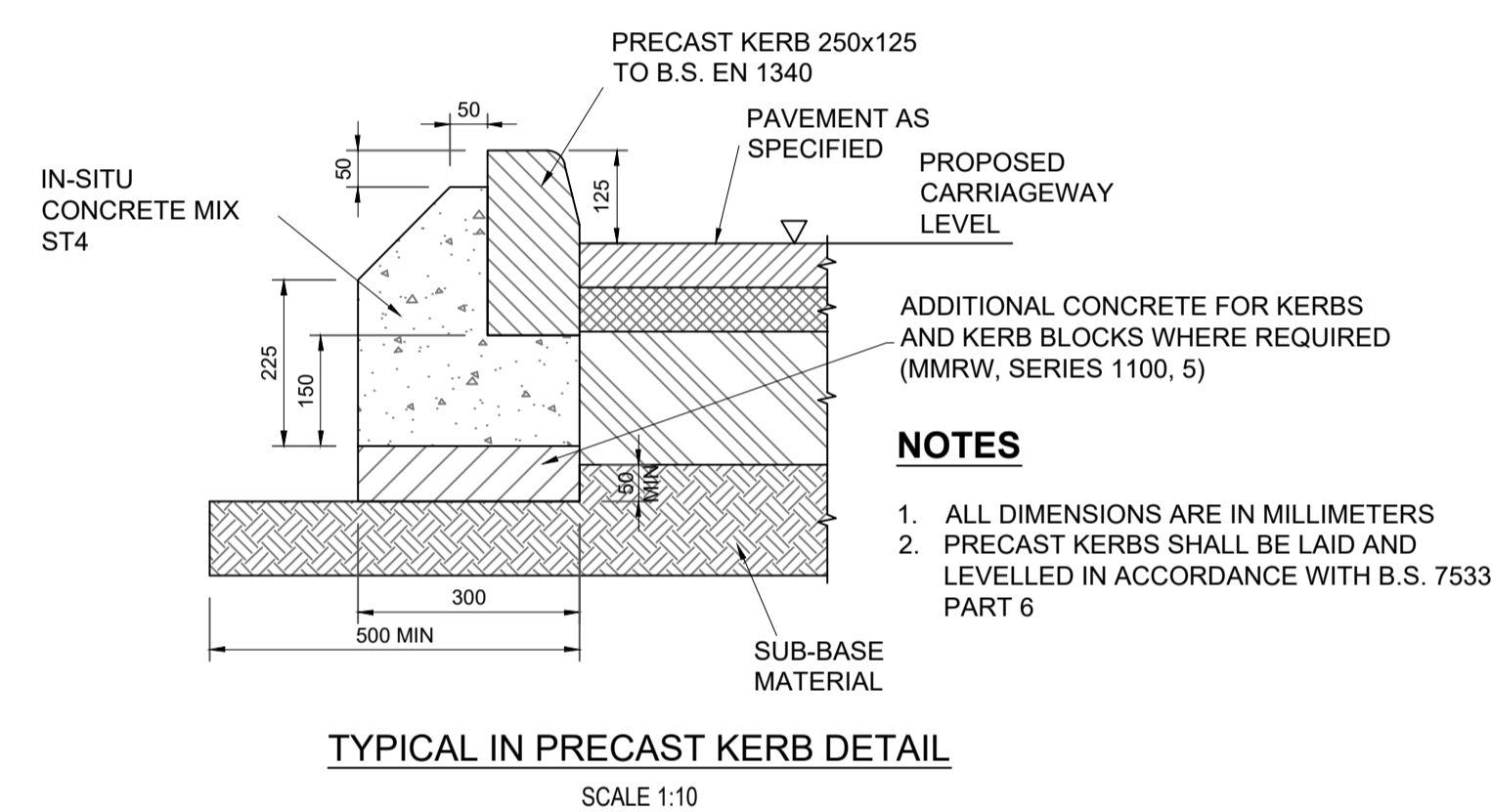
PRECAST CONCRETE GULLY (WITHOUT KERB)
SCALE 1:25



PLAN (EXCLUDING KERB)
SCALE 1:25



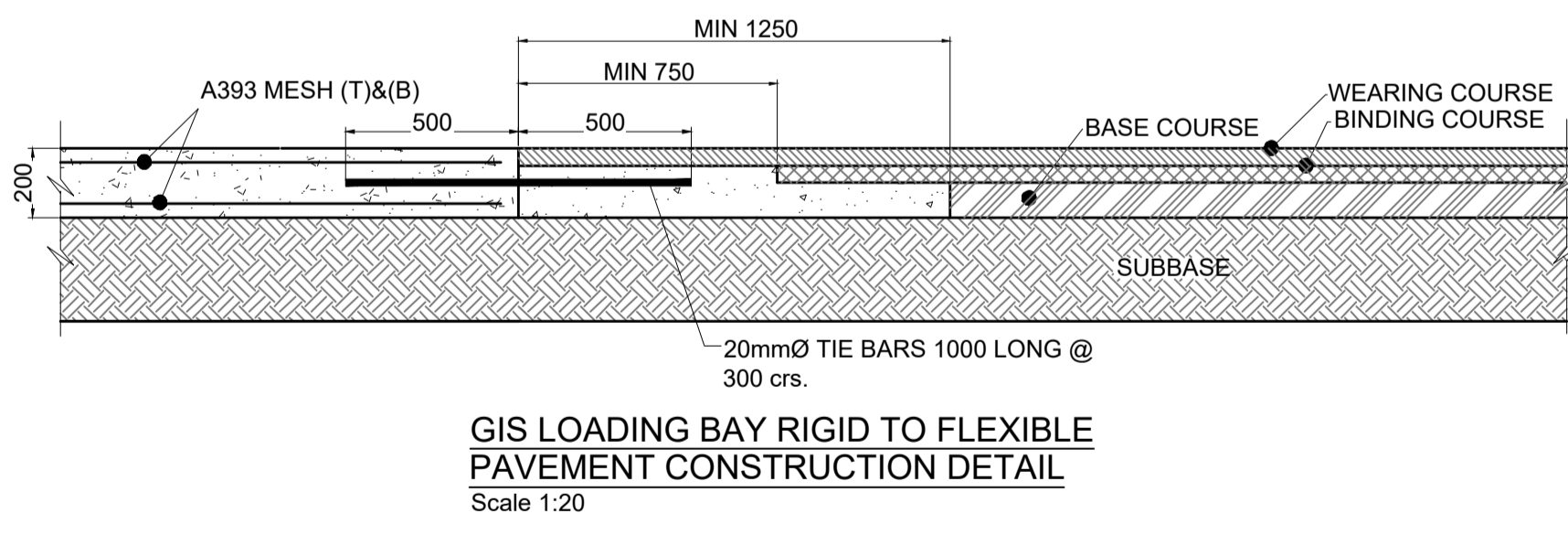
PROPOSED STONE/GRAVEL SURFACE
SCALE 1:10



TYPICAL IN PRECAST KERB DETAIL
SCALE 1:10

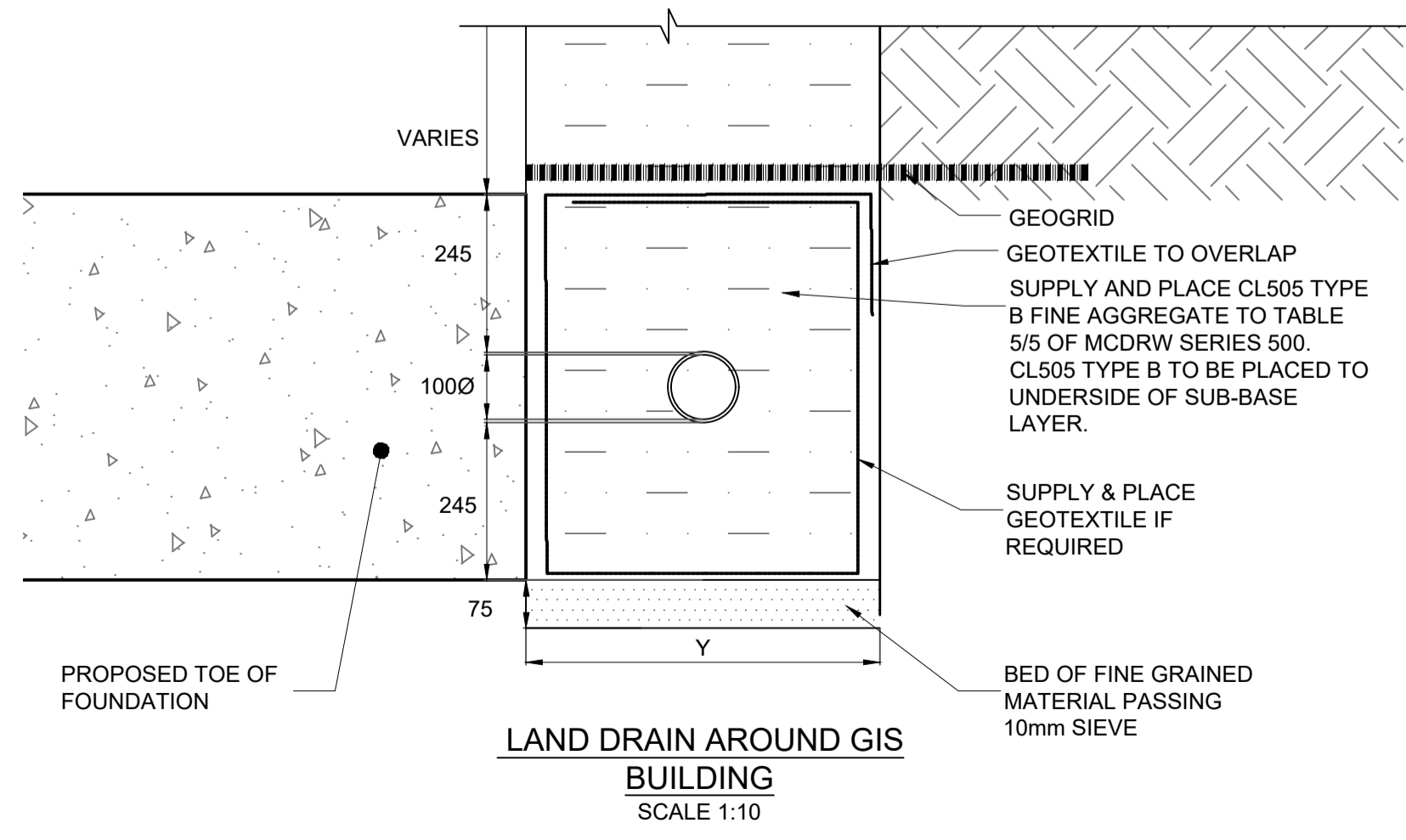
- NOTES**
1. ALL DIMENSIONS ARE IN MILLIMETERS
 2. PRECAST KERBS SHALL BE LAID AND LEVELLED IN ACCORDANCE WITH B.S. 7533 PART 6

- GULLY NOTES:**
1. ALL DIMENSIONS ARE IN MILLIMETERS EXCEPT WHERE STATED.
 2. THE MINIMUM DEPTH FROM THE TOP OF THE GRATING TO THE TOP OF THE GULLY OUTLET IS TO BE 750 WHEN THE CONNECTING PIPE IS UNDER A CARRIAGEWAY OR A HARD SHOULDER AND 600 ELSEWHERE.
 3. PRECAST CONCRETE GULLIES AND COVER SLABS SHALL BE TO IS EN 1917 OR BS 5911-6.
 4. WHERE THE GULLY HAS A TRAP THE STOPPERS SHALL COMPLY WITH THE REQUIREMENTS OF BS 5911-4 AND IS EN 1917.



GIS LOADING BAY RIGID TO FLEXIBLE PAVEMENT CONSTRUCTION DETAIL
Scale 1:20

- LAND DRAIN NOTE:**
1. ALL DIMENSIONS ARE IN MILLIMETRES.
 2. DIMENSIONS X IS THE EXTERNAL DIAMETER OF THE PIPE.
 3. MINIMUM DRAIN WIDTH $Y=X+300$ FOR DRAINS NOT EXCEEDING 1.5m COVER BELOW FINISHED LEVEL. $Y=X+450$ FOR DRAINS EXCEEDING 1.5m COVER BELOW FINISHED LEVEL.
 4. MAXIMUM PIPE DIAMETER TO BE 450mm.
 5. GEOTEXTILE IS REQUIRED WHERE FILTER DRAINS ARE USED.
 - (i) WITHIN SOIL TYPES WHERE WATER BEARING SANDS OR SILTS ARE ENCOUNTERED.
 - (ii) WITHIN CUT SECTIONS CONTAINING DRAINS TO CONTROL GROUNDWATER WHERE WATER BEARING SANDS OR SILTS ARE ENCOUNTERED.



LAND DRAIN AROUND GIS BUILDING
SCALE 1:10

Rev	Description	Drawn	Checked	Date
P04	SID ISSUE	DM	PM	04.02.2022
P03	DRAFT SID ISSUE	DM	PM	10.12.2021
P02	SID SCHEME ISSUE	DM	PM	26.11.2021
P01	WIP	DM	PM	22.10.2021

Clifton Scannell Emerson Associates Limited
Consulting Engineers,
3rd Floor The Highline,
Bakers Point, Pottery Road,
Dun Laoghaire, Co. Dublin,
Ireland, A96 KW29

T. +353 1 288 5006
F. +353 1 283 3466
E. info@csea.ie
W. www.csea.ie

VANTAGE DATA CENTERS

Client: **KILCABERY 110KV SUBSTATION & MV CLIENT COMPOUND**

Project: **TYPICAL ROAD DETAILS**

Dwg. Title: **21_115**

Drawn By: **DM** Date: **OCT 2021**

Checked By: **PM** AS INDICATED @ A1 Scale: **CSEA Job No.**

Project Code: **21_115 - CSE - 00 - XX - DR - C - 2302**

Status Code: **S2** Suitability Description: **PRELIMINARY**

Revision: **P04** Project Status: **PRELIMINARY**