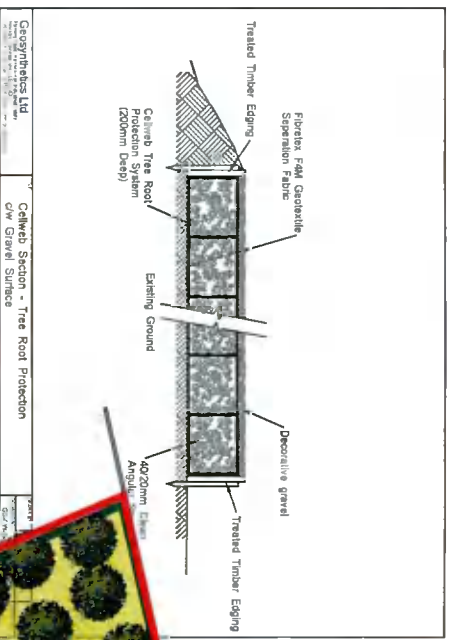


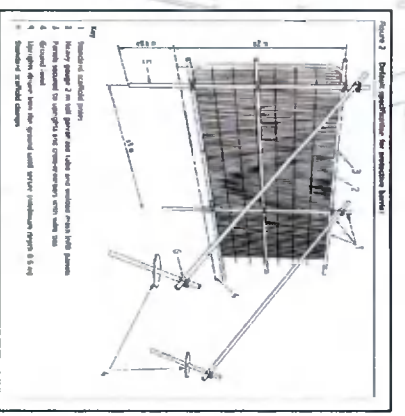
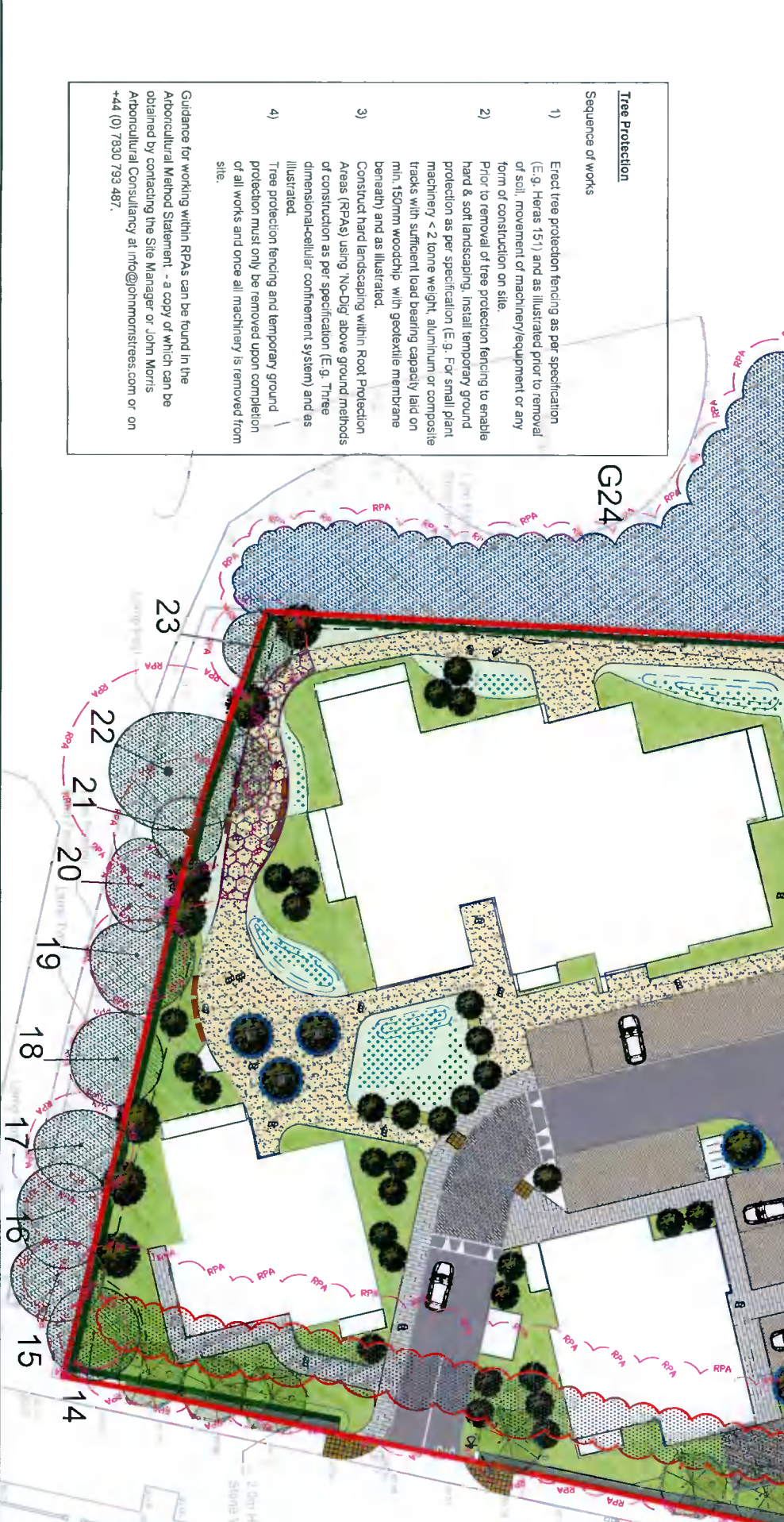


Client	L & S Developments Ltd
Project / Site	Greenhill's Road, Tallaght
Reference	21-234-01
Survey Date	14th October 2020
Definition	14th October 2020
Age Class	Y (Young) EM (Early mature) M (Mature) OM (Over mature) V (Veteran)*
Physiological Condition	First 1/3 of life expectancy Stage before maturity Full age for species Beyond life expectancy & in decline Ancient characteristics or conservation value
Structural Condition	Good No obvious health problems Intervention may improve health Serious ill health or dying No visible defects Defects may require intervention Dangerous or no remedy
Category	A B C U
U.L.E	40+ 20+ 10+ <10
Sub category	1 2 3 4
	Mainly arboreal/cultural Mainly landscape Mainly cultural
	*Veteran RPA afforded 15x stem diameter in accordance with industry best practice
	P - Tree on private land
	*Tree is not on topographical survey and therefore position remains indicative.
	# Tree is inaccessible (measurements estimated).

Tree No.	Tag No.	Species	Botanical Name	H (m)	Stem Dia.	Crown Spread (m)			C.C (m)	L.B.H (m)	L.B.D	Age	Physiological	Structural	Comments	Recommendations	U.L.E	Cat.	RPA (m2)	RPA Radial distance (m)		
						N	E	S													W	
1 (P)	7333	Lime	<i>Tilia x europaea</i>	21	1390	1	7	9	7	6	1	4	East	M	Fair	Fair	Two stems forming spreading crown from 4m, dense epicormic growth from base, smaller stem west has previously failed with break at 6m, now open to decay / infection, previous minor crown reduction west, high value tree with prominence in local landscape and future veteran potential.	Protect during construction.	40+	A1	887	17
2 (P)	7334	Horse chestnut	<i>Aesculus hippocastanum</i>	18	860	1	8	8	8	7	1	6	South	M	Poor	Poor	Single stem forming symmetric spreading crown from 6m, basal decay and stem girdling east with damage to c.20% of outer sapwood to expose inner heartwood, horse chestnut bleeding canker (<i>Pseudomonas syringae</i> pv. <i>aesculi</i>) and leaf miner (<i>Cameraria ohridella</i>) infection, in senescence stage of life.	Reduce crown by 2m to reduce likelihood of stem and primary limb failure, enabling safe management of natural decline and prolonging life expectancy.	10+	C1	327	10
3 (P)	7335	Lime	<i>Tilia x europaea</i>	21	1040	1	8	8	7	8	1	3	North	M	Fair	Fair	Single ivy clad stem forming spreading crown from 4m, dense epicormic growth from base, historic pruning wounds at unions, previous minor crown reduction, prominent high value tree in local landscape.	Protect during construction. Temporary ground protection required.	40+	A1	499	13
4	7336	Monterey cypress	<i>Cupressus macrocarpa</i>	19	890	1	6	5	6	4	0	4	North	M	Poor	Poor	Single stem forming asymmetric crown from 3m, hollow with decay east, severe crown dieback with multiple limb failures, in physiological decline with limited useful life expectancy.	Fell to facilitate development proposal.	10+	C1	366	11
5	7337	Sycamore	<i>Acer pseudoplatanus</i>	16	740	1	2	2	9	10	1	3	West	M	Fair	Fair	Single ivy clad stem forming asymmetric crown from 3m, contributes to mature canopy cover in local landscape as part of neighbouring group.	Protect during construction. Permanent and temporary ground protection required.	20+	P1	254	9
6	7338	Sycamore	<i>Acer pseudoplatanus</i>	17	830	1	2	10	10	4	3	4	South	M	Fair	Fair	Single ivy clad stem forming spreading asymmetric crown from 4m, contributes to mature canopy cover in local landscape as part of neighbouring group.	Protect during construction. Permanent and temporary ground protection required.	20+	P1	308	10
7	7339	Sycamore	<i>Acer pseudoplatanus</i>	18	690	1	2	3	4	3	14	14	South	M	Fair	Fair	Single ivy clad stem forming heavily suppressed compact crown from 14m, contributes to mature canopy cover in local landscape as part of neighbouring group.	Protect during construction. Permanent and temporary ground protection required.	20+	P1	222	8
8	7340	Sycamore	<i>Acer pseudoplatanus</i>	17	1080	1	9	11	3	12	2	3	North	M	Fair	Fair	Single ivy clad stem forming spreading asymmetric crown from 3m, contributes to mature canopy cover in local landscape as part of neighbouring group.	Protect during construction. Permanent and temporary ground protection required.	20+	P1	523	13
9	7341	Weeping ash	<i>Fraxinus excelsior 'Pendula'</i>	12	620	1	4	4	5	4	1	5	South	M	Poor	Fair	Single ivy clad stem, spreading symmetric crown from 5m, early stage infection of ash dieback (<i>Hymenoscyphus fraxineus</i>) with leaf discoloration and dieback of shoots, sparse canopy with poor bud formation, in physiological decline with limited useful life expectancy.	Fell to facilitate development proposal.	10+	C1	177	8
10	7342	Horse chestnut	<i>Aesculus hippocastanum</i>	15	1060	1	7	7	7	7	2	3	South	M	Fair	Poor	Single ivy clad stem forming spreading symmetric crown from 3m, basal decay and stem girdling north likely caused by infection of bleeding canker and leaf miner, previous crown reduction.	Fell to facilitate development proposal.	10+	C1	499	13



LEGEND	
	Category A (Tree stem and canopy spread)
	Category B
	Category C
	Category U
	Root Protection Area
	Trees to be Removed
	Site Boundary
	Existing Layout
	Proposed Layout
	Tree Protection Fencing (area within Exclusion Zone and is required to protect retained tree roots, stems, canopies and soil environments)
	Temporary Ground Protection
	Permanent Ground Protection



PROTECTIVE FENCING. THIS FENCING MUST BE MAINTAINED IN ACCORDANCE WITH THE APPROVED PLANS AND DRAWINGS FOR THIS DEVELOPMENT.

TREE PROTECTION AREA KEEP OUT!

THESE ARE EXCLUDED FROM THE PROTECTIVE FENCING AND PROTECTIVE FENCING IS NOT TO BE MAINTAINED IN ACCORDANCE WITH THE APPROVED PLANS AND DRAWINGS FOR THIS DEVELOPMENT.

TITLE:	
Tree Impact & Protection Plan	
PROJECT SITE:	
Greenhills Road, Tallaght	
CLIENT:	
St Mary's Medical (Tallaght) Ltd	
DRAWING REF:	
21-234-03	
REVISION:	
V2	
DATE:	SCALE:
28.01.2022	1:500@A3
DRAWN BY:	CHECKED BY:
JM	JL

John Morris Arboricultural Consultancy Ltd
 Executive Suite, Wicklow Court, Lifford Road, Dublin D17 12 5G2
 Email: info@johnmorristrees.com | Mobile: +44 (0) 7530 753 487
 Web: www.johnmorristrees.com

Tree Protection
 Sequence of Works

- 1) Erect tree protection fencing as per specification (E.g. Heras 151) and as illustrated prior to removal of soil, movement of machinery/equipment or any form of construction on site.
- 2) Prior to removal of tree protection fencing to enable hard & soft landscaping, install temporary ground protection as per specification (E.g. For small plant machinery < 2 tonne weight, aluminium or composite tracks with sufficient load bearing capacity laid on min. 150mm woodchip with geotextile membrane beneath) and as illustrated.
- 3) Construct hard landscaping within Root Protection Areas (RPAs) using 'No-Dig' above ground methods of construction as per specification (E.g. Three dimensional-cellular confinement system) and as illustrated.
- 4) Tree protection fencing and temporary ground protection must only be removed upon completion of all works and once all machinery is removed from site.

Guidance for working within RPAs can be found in the Arboricultural Method Statement - a copy of which can be obtained by contacting the Site Manager or John Morris Arboricultural Consultancy at info@johnmorristrees.com or on +44 (0) 7530 753 487.