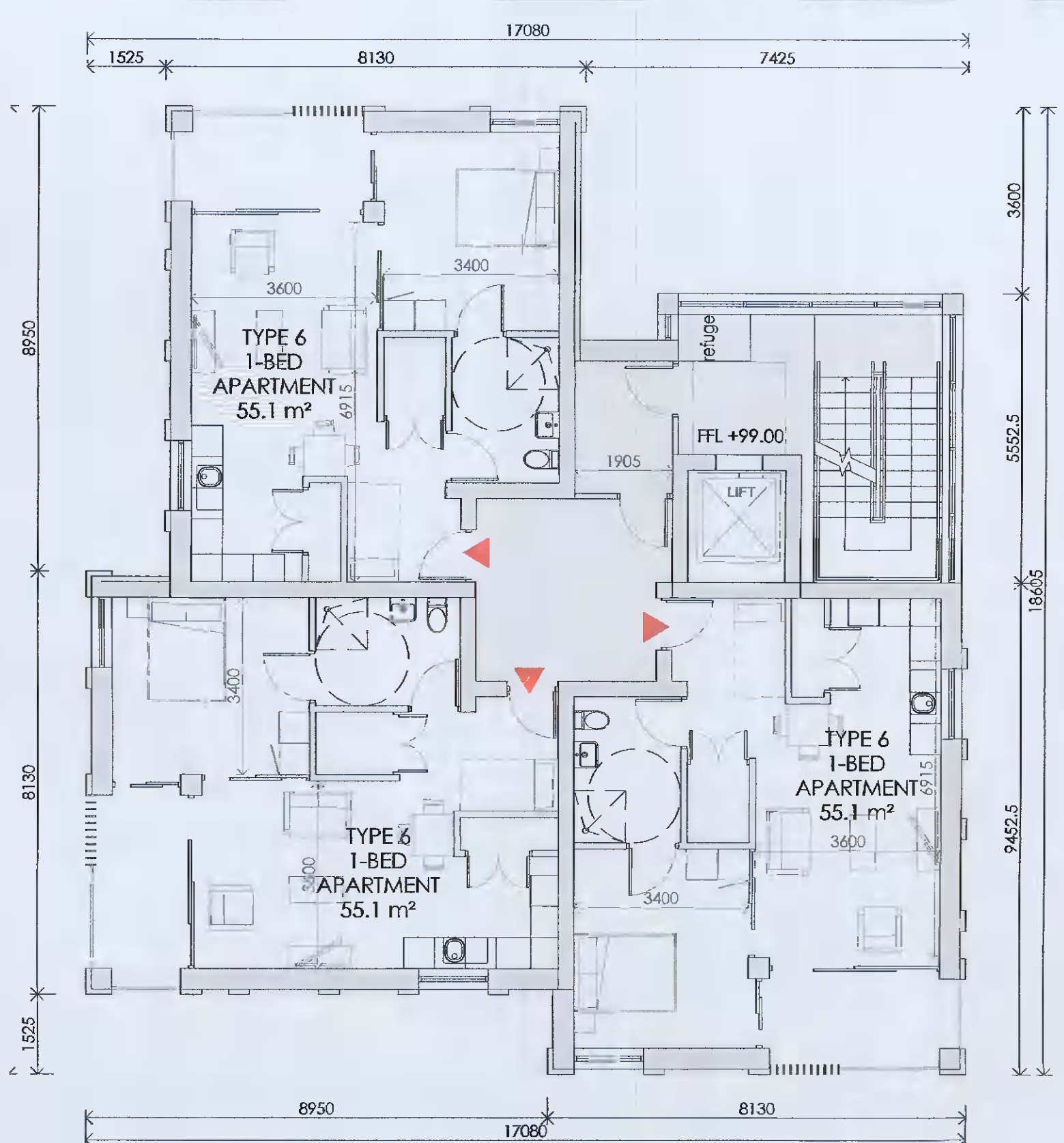
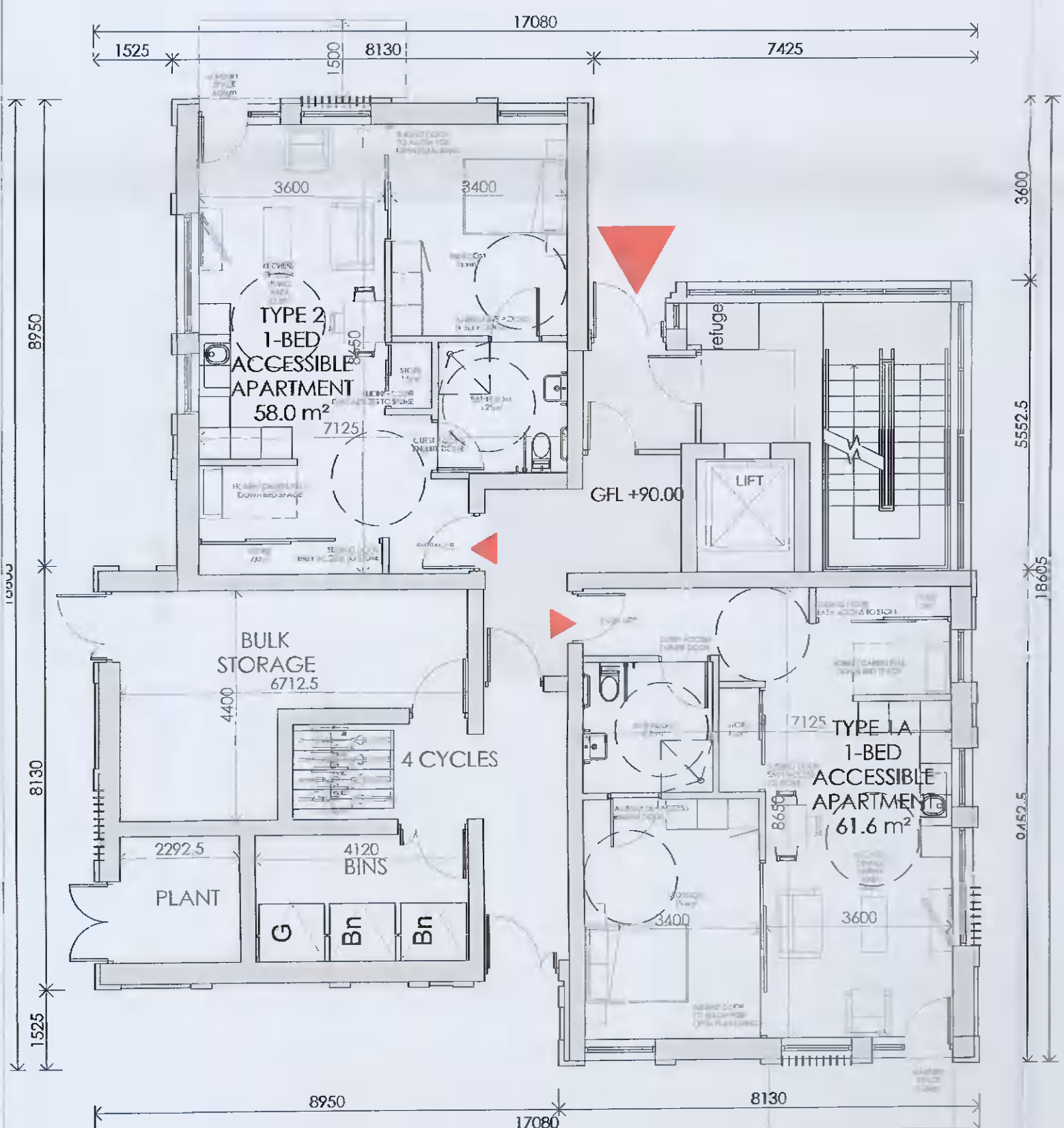


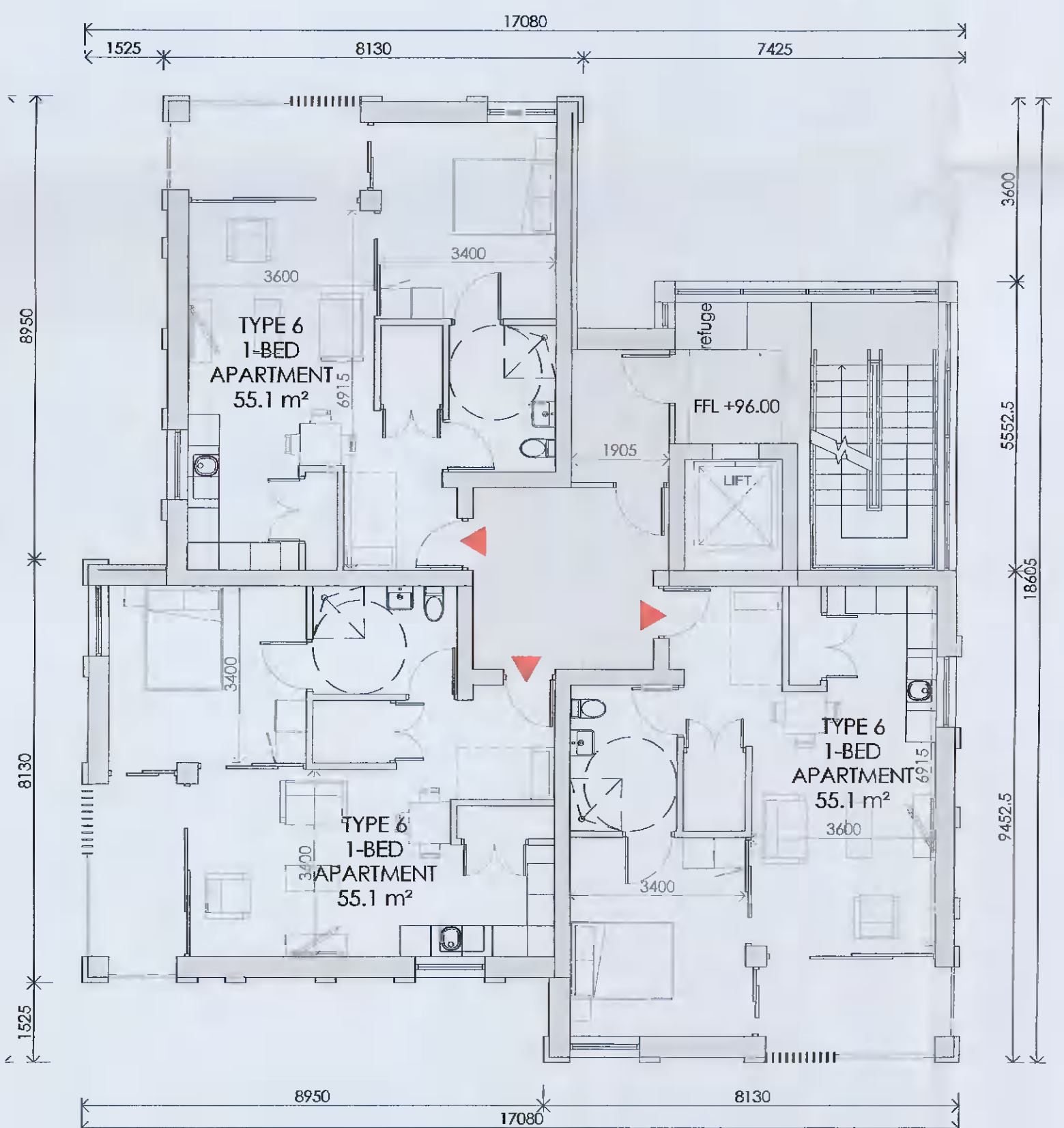
BLOCK A FIRST FLOOR PLAN SCALE 1:100



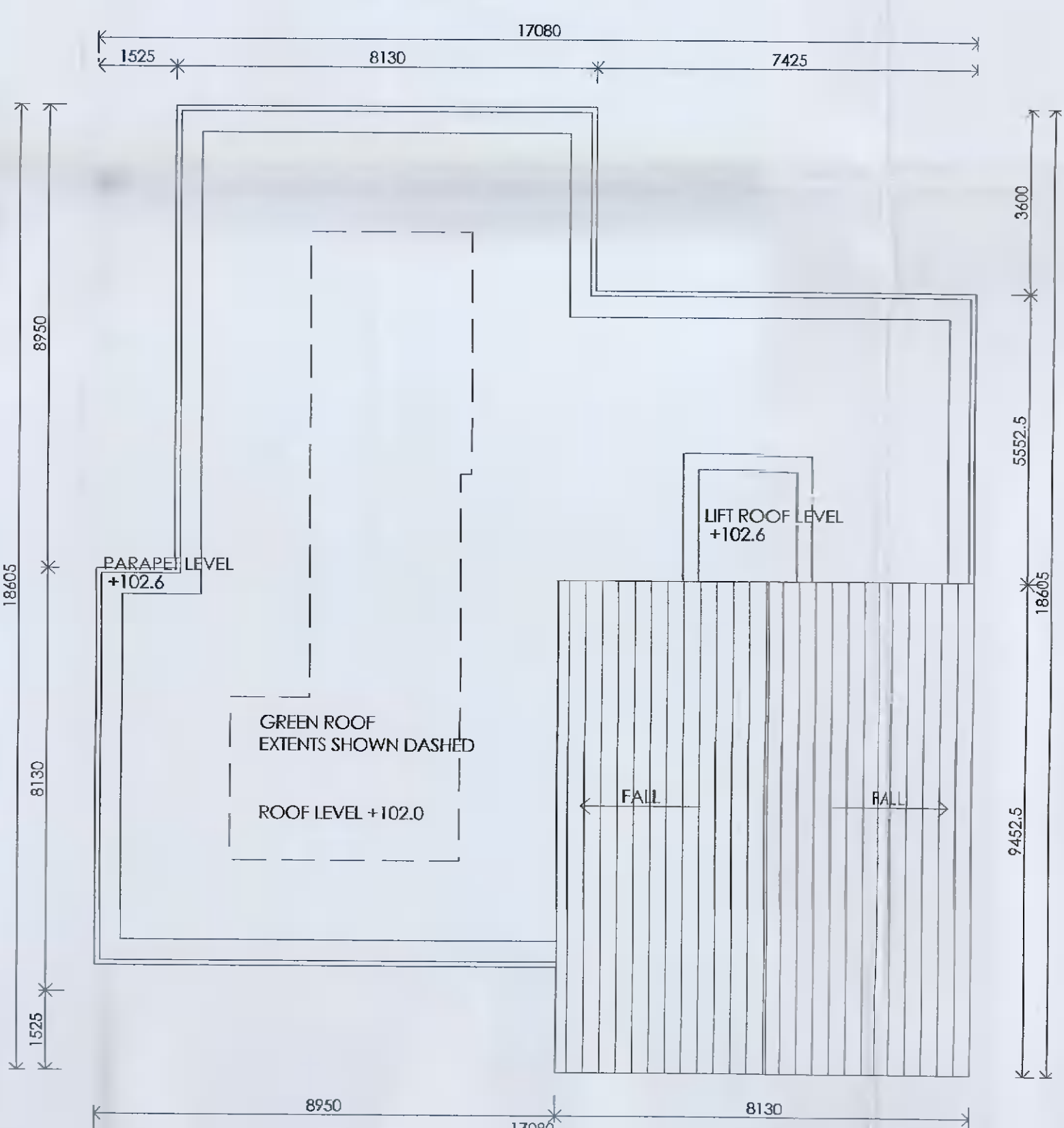
BLOCK A THIRD FLOOR PLAN SCALE 1:100



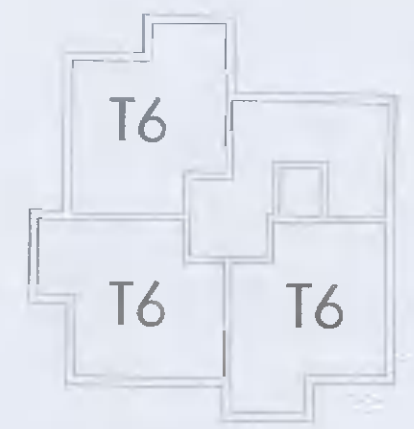
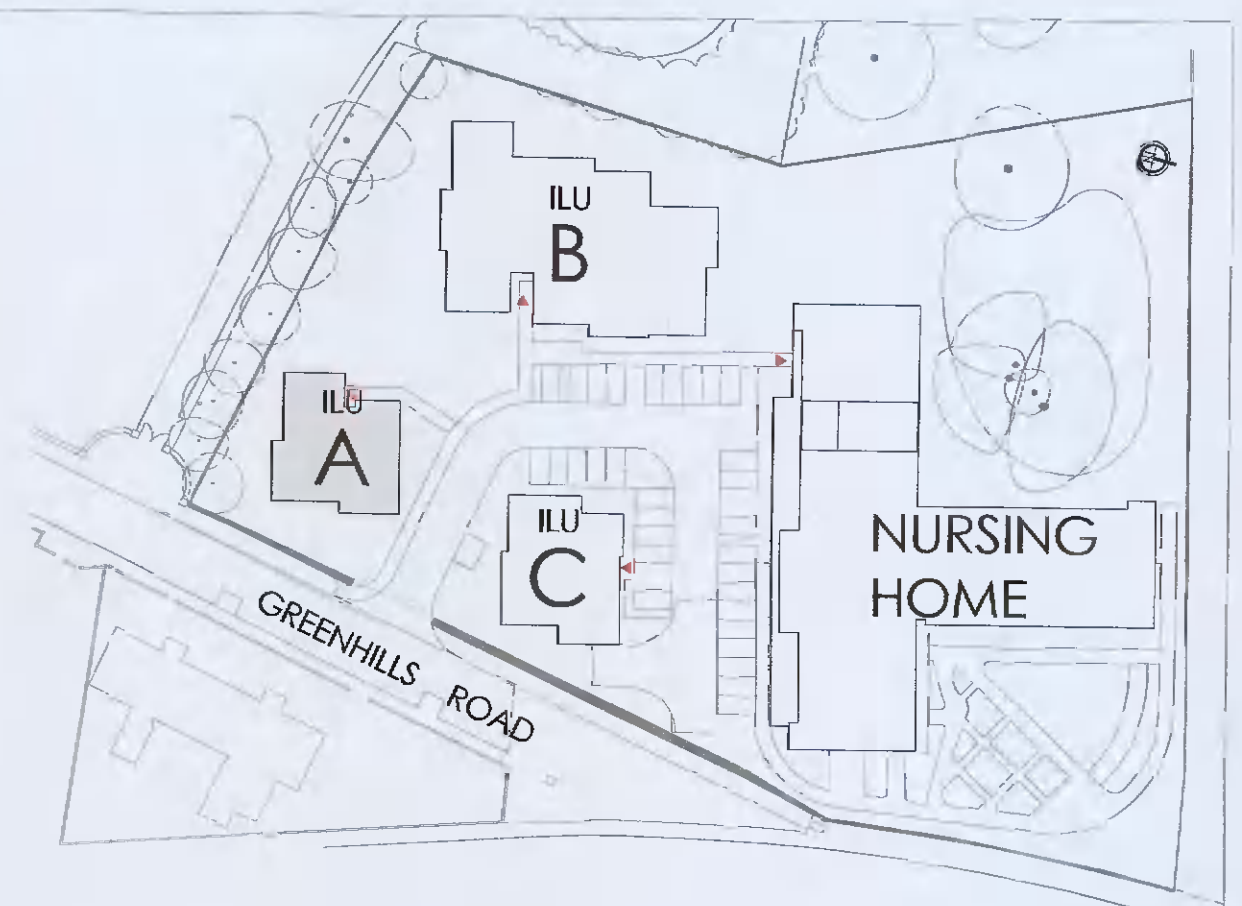
BLOCK A GROUND FLOOR PLAN SCALE 1:100



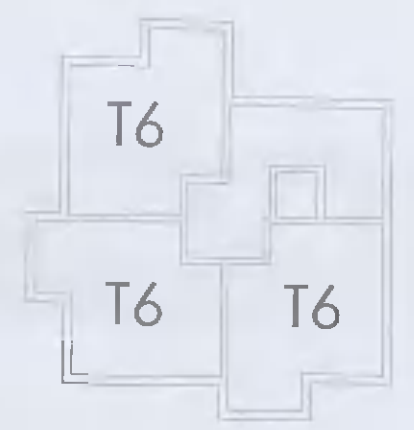
BLOCK A SECOND FLOOR PLAN SCALE 1:100



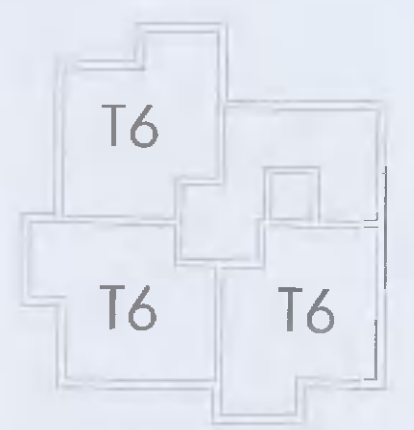
BLOCK A ROOF PLAN SCALE 1:100



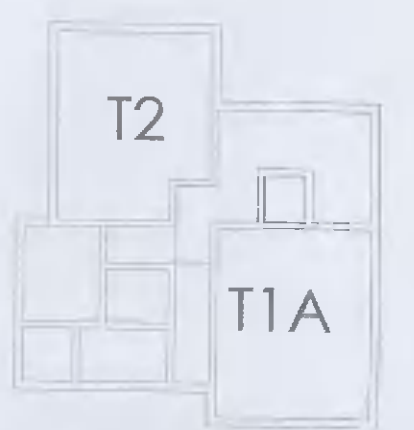
THIRD FLOOR PLAN



SECOND FLOOR PLAN



FIRST FLOOR PLAN



FIRST FLOOR PLAN

LEVEL 0	2 APARTMENTS ACCESSIBLE
LEVEL 1	3 APARTMENTS
LEVEL 2	3 APARTMENTS
LEVEL 3	3 APARTMENTS
TOTAL	11 APARTMENTS

CLIENT
ST MARY'S MEDICAL (TALLAGHT LTD)

PROJECT
NURSING HOME + INDEPENDENT LIVING UNITS
OLD GREENHILLS ROAD,
TALLAGHT, DUBLIN.

BRIEF
INDEPENDENT LIVING UNITS
BLOCKS A FLOOR PLANS

ARCHITECTS
JWP ARCHITECTS

ARCHITECTS, PLANNERS, PROJECT MANAGERS

2nd FLOOR, ALFRED HOUSE, 30 NORTHWOOD COURT, NORTHWOOD, BELFAST, BT2 8ED

30 NORTHWOOD COURT, NORTHWOOD, SANTRY, DUBLIN 9

TEL: +44 (0)28 9044 5930 TEL: +353 (0) 1894 0100
E: @jwp-architects.com

DRAWN BY DATE	CHECKED BY	SCALE AS
LF 21/01/22	DOH	1:100
DRAWING NUMBER	REVISION	
3464-P-010		