

Note:  
 All structural timbers to comply with SR11, structural timber for domestic construction. Timber to be kiln dried and supplied at a moisture content not exceeding 22%.

Roof - 25mm continuous strip or equal.  
 Window opens Kitchen 1/10 of floor area, other rooms 1/20 of floor area.

Insulation:  
 Maximum Elemental U Values.  
 Exposed Roofs - 0.25 W/M2 K.  
 Exposed Walls - 0.45 W/M2 K.  
 Exposed Floors - 0.45 W/M2 K.

Floor Joists:  
 44mm x 175mm SCA floor joists at 400mm centres with 1 no. row of bridging at centre span. Double row under stud partitions in same direction.  
 75mm x 175mm SCA trimmers to firebreast and open.  
 Joists at all party walls to be hung on metal shoes. Galvanised metal straps 5mm x 30mm over 3 joists at 2000mm centres pack and nog off walls.

Roof:  
 Coloured concrete roof tiles laid to manufacturers instructions on 35mm x 50mm battens on sarking felt on prefabricated roof trusses at 600mm centres to I.S. 193: 1986, complete with bracing, water storage tank supports and holding down clips, all to manufacturers instructions.

Stairs:  
 2R+G to be between 550mm and 700mm, minimum clear width 800mm.  
 Balusters - 840mm vertically over pitch line and 900mm over landing, not greater than 100mm between balusters. Headroom 2000mm vertically.

Roof:  
 Coloured concrete roof tiles laid to manufacturers instructions on 35mm x 50mm battens on sarking felt on prefabricated roof trusses at 600mm centres to I.S. 193: 1986, complete with bracing, water storage tank supports and holding down clips, all to manufacturers instructions.



SIDE ELEVATION

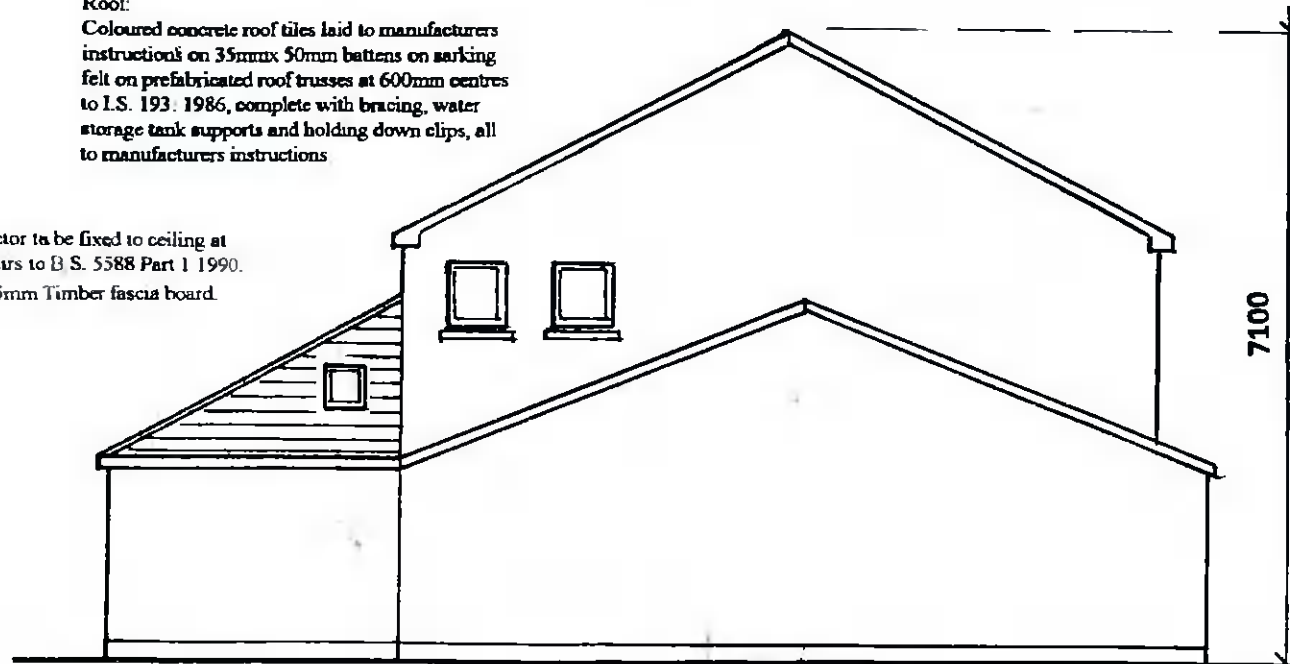
Scale : 1 : 100



REAR ELEVATION

Roof:  
 Coloured concrete roof tiles laid to manufacturers instructions on 35mm x 50mm battens on sarking felt on prefabricated roof trusses at 600mm centres to I.S. 193: 1986, complete with bracing, water storage tank supports and holding down clips, all to manufacturers instructions.

Smoke Detector to be fixed to ceiling at bottom of stairs to B.S. 5588 Part 1 1990. 32mm x 175mm Timber fascia board.



SIDE ELEVATION

Plumbing:  
 Wash basin - Trap 32mm Seal 75mm  
 Sink / Bath - Trap 40mm Seal 75mm  
 W.C. - Trap 75mm Seal 50mm

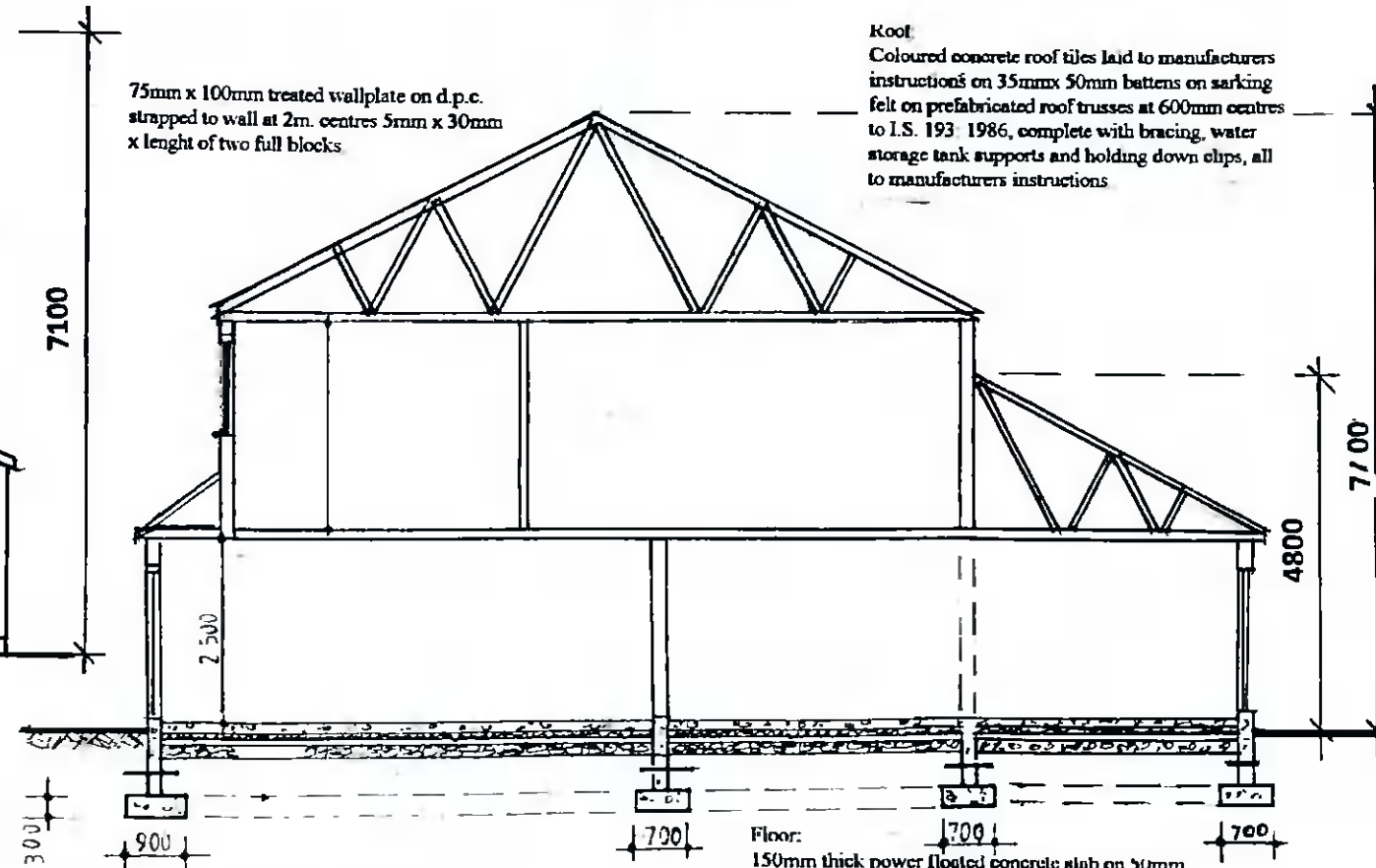
Drains:  
 100mm and 150mm diameter drains bedded on 100mm granular material, covered with 100mm granular fill and 200mm selected fill.

Concrete Mixes:  
 Lean Mix 7.5 N/mm2.  
 Pipe Bedding 10.0 N/mm2.  
 Blinding 18.0 N/mm2.  
 Strip Foundation 15.0 N/mm2.  
 Ground Floor 20.0 N/mm2.  
 Paths 25.0 N/mm2.

Lintols:  
 Precast concrete composite lintol and pressed metal lintols incorporating insulation, 225mm bearing each end.

75mm x 100mm treated wallplate on d.p.c. strapped to wall at 2m centres 5mm x 30mm x length of two full blocks

Roof:  
 Coloured concrete roof tiles laid to manufacturers instructions on 35mm x 50mm battens on sarking felt on prefabricated roof trusses at 600mm centres to I.S. 193: 1986, complete with bracing, water storage tank supports and holding down clips, all to manufacturers instructions.



SECTION A - A

Floor:  
 150mm thick power floated concrete slab on 50mm thick polystyrene insulation, 25mm at external edges on 1000 gauge Visqueen damp proof membrane on sand blinding on 150mm minimum well consolidated hard-core filling.

Lintols:  
 Precast concrete composite lintol and pressed metal lintols incorporating insulation, 225mm bearing each end

DRAINAGE LEGEND  
 Foul Sewer Drain ---  
 Surface Water Drain ---  
 Gully Trap □  
 Gully Trap R.W.P. □  
 Armstrong Junction ○  
 Manhole □

Scale : 1 : 100  
 Revisions:

PROPOSED TWO STOREY THREE BEDROOM HOUSE TO SIDE OF 54A  
 KNOCKLYON GREEN, KNOCKLYON, DUBLIN 16 FOR MR. JOHN FAIR.

WATSON FITZPATRICK & ASSOCIATES  
 Planning & Design Consultants  
 98 Woodlawn Park Grove  
 Firhouse, Dublin 24.