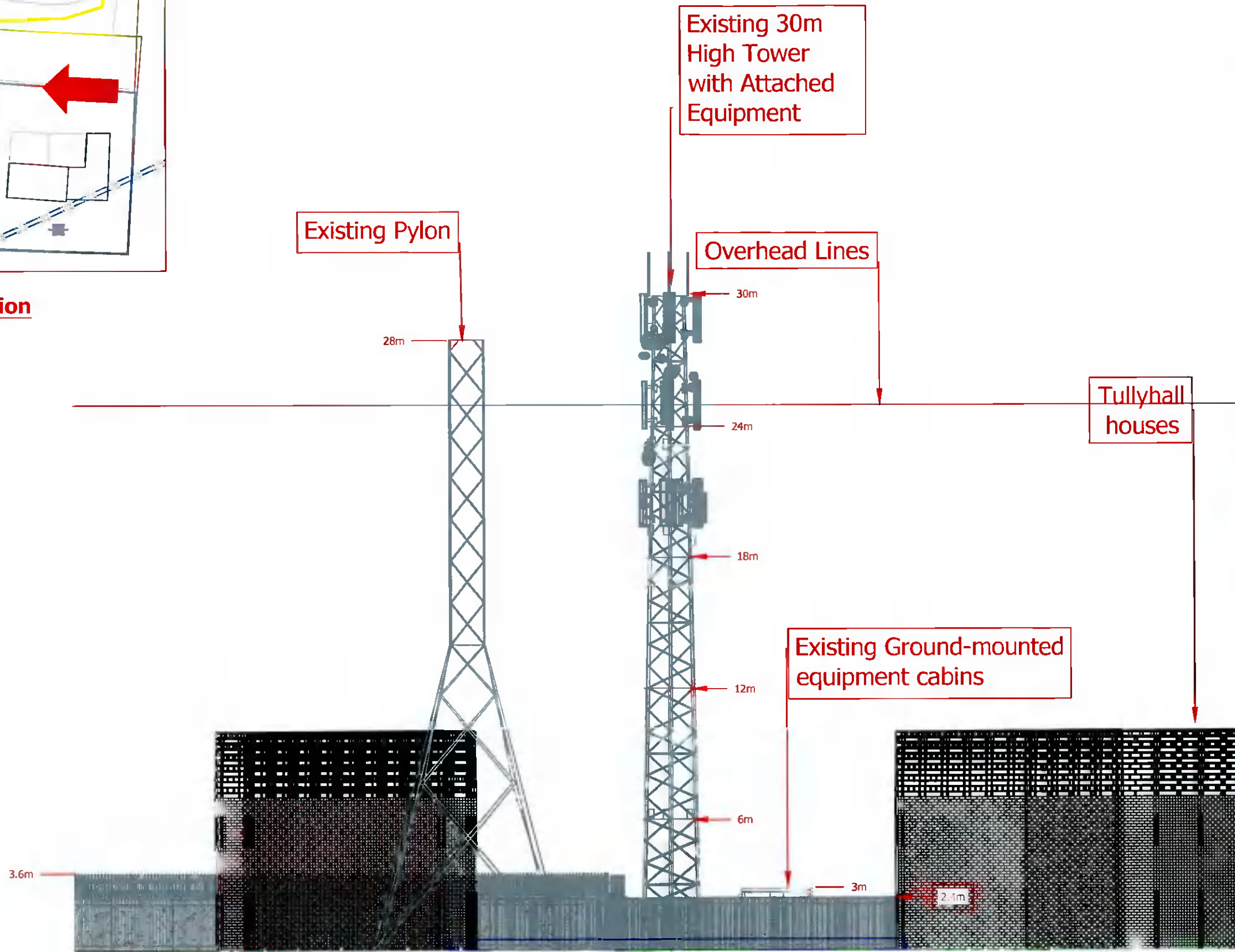




**Direction Of Elevation
(Not To Scale)**



Notes	
1.0	Do not scale
1.1	All dimensions are in metres unless specified
1.2	Assume all site details are existing unless stated
1.3	All mapping reproduced with permission of the Ordnance Survey of Ireland. Licence number EN 0023719-24

Structure Details:	Height:-30m Type:- Lattice Colour:- Battleship Grey
---------------------------	---

Power Supply:	Mini pillar
----------------------	-------------

Site Details:	Development Area:-197 m ² (outlined in red)
----------------------	---

Site Access:	Access is gained via unsurfaced track secured with wooden gates at Tullyhall Rise
---------------------	---

Site Co-ordinates:	Irish National Grid
Co-ordinate EASTING	304315
Co-ordinate NORTHING	232903

Site Co-ordinates:	Irish Transverse Mercator
Co-ordinate EASTING	704243
Co-ordinate NORTHING	732930

Warning

THIS MAP INDICATES THE APPROXIMATE LOCATION OF MAIN ESB CABLES IN THE GENERAL AREA OF THE PROPOSED EXCAVATION. THE FOLLOWING PRECAUTIONS/CONDITIONS MUST BE STRICTLY ADHERED TO:

- BEFORE ANY EXCAVATION BY MECHANICAL MEANS IS UNDERTAKEN, THE EXACT LOCATION OF THE CABLES MUST BE ESTABLISHED BY:
 - USING CABLE LOCATION EQUIPMENT
 - MANUALLY EXCAVATED TRIAL HOLES
- CABLE DEPTHS CANNOT BE ASSUMED
- ESB MUST BE INDEMNIFIED AGAINST ANY CLAIMS DUE TO ACCIDENTS OR DAMAGES HOWEVER ARISING.

HOUSE SERVICES, LAMP SERVICES, ETC ARE NOT OUTLINED.

REV.	DATE	DESCRIPTION	CHK	APP

ESB Telecoms Ltd.
27 Lwr. Fitzwilliam St.
Dublin 2.
Ph: 01-7027051

Address: Balgaddy 38kV Substation,
Kishoge,
Lucan,
Co. Dublin.

Title: Balgaddy 38kV_Eastern Elevation

Drawing No: Blagaddy 38kV_PL_05

Issue Date: 23 January 2022

Drawn By: N. Fitzpatrick

Site App by:

Scale: 1:100 **OS Map No:** 3261-c