



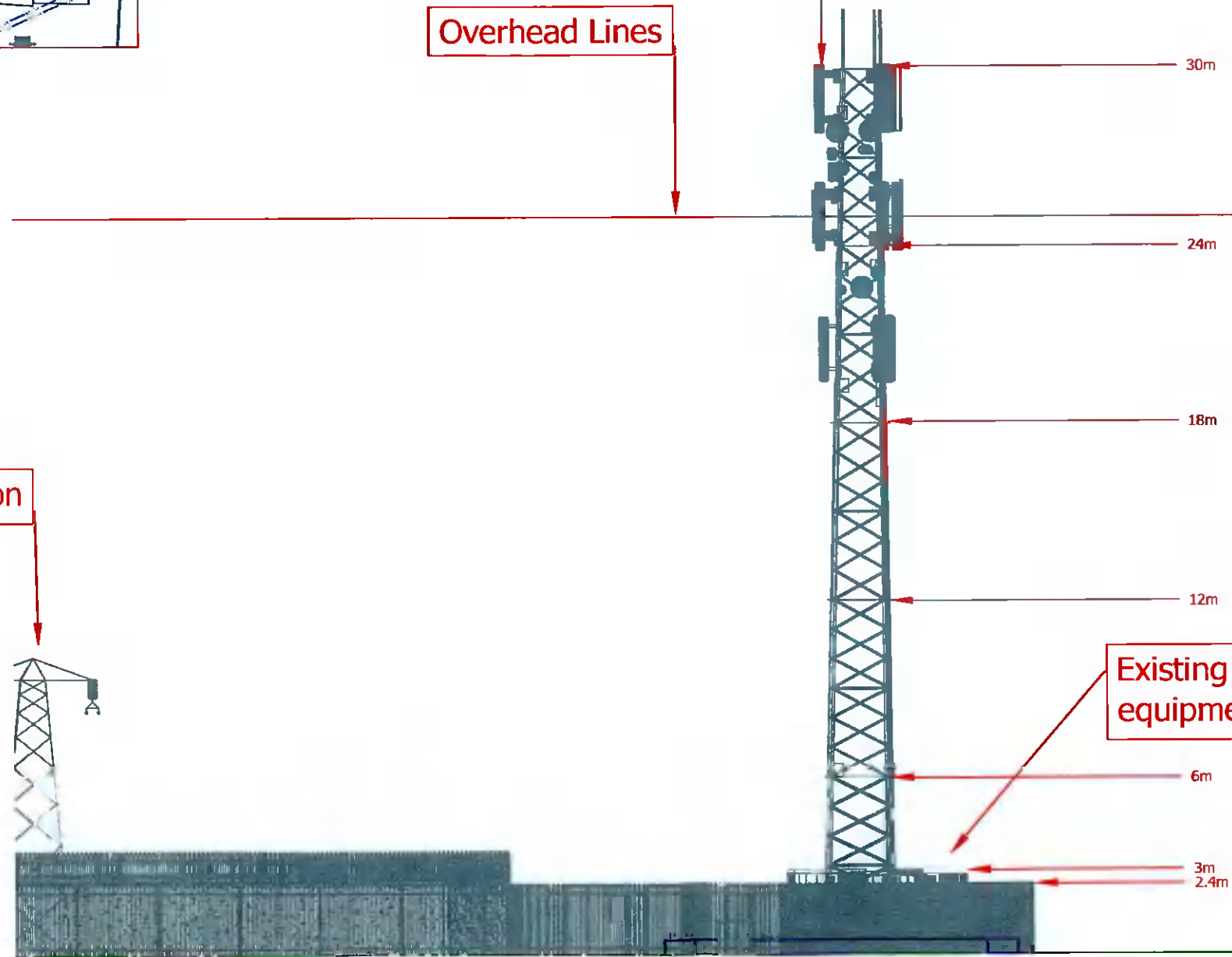
**Direction Of Elevation
(Not To Scale)**

Overhead Lines

Existing 30m High Tower with Attached Equipment

Existing Pylon

Existing Ground-mounted equipment cabins



Notes

- 1.0 Do not scale
- 1.1 All dimensions are in metres unless specified
- 1.2 Assume all site details are existing unless stated
- 1.3 All mapping reproduced with permission of the Ordnance Survey of Ireland. Licence number EN 0023719-24

Structure Details:
Height:-30m
Type:- Lattice
Colour:- Battleship Grey

Power Supply:
Mini pillar

Site Details:
Development Area:-197 m²
(outlined in red)

Site Access:
Access is gained via unsurfaced track secured with wooden gates at Tullyhall Rise

Site Co-ordinates:
Irish National Grid
Co-ordinate EASTING 304315
Co-ordinate NORTHING 232903

Site Co-ordinates:
Irish Transverse Mercator
Co-ordinate EASTING 704243
Co-ordinate NORTHING 732930

Warning

- THIS MAP INDICATES THE APPROXIMATE LOCATION OF MAIN ESB CABLES IN THE GENERAL AREA OF THE PROPOSED EXCAVATION, THE FOLLOWING PROCEDURES/CONDITIONS MUST BE STRICTLY ADHERED TO:
1. BEFORE ANY EXCAVATION BY MECHANICAL MEANS IS UNDERTAKEN, THE EXACT LOCATION OF THE CABLES MUST BE ESTABLISHED BY:
 - (a) USING CABLE LOCATION EQUIPMENT
 - (b) MANUALLY EXCAVATED TRIAL HOLES
 2. CABLE DEPTHS CANNOT BE ASSUMED
 3. ESB MUST BE NOTIFIED AGAINST ANY CLAIMS DUE TO ACCIDENTS OR DAMAGES HOWEVER ARISING.
 4. USE SERVICES, LAMP SERVICES, ETC ARE NOT OUTLINED.

REV.	DATE	DESCRIPTION	CHK	APP

ESB Telecoms Ltd.
27 Lwr. Fitzwilliam St.
Dublin 2.
Ph: 01-7027051

Address: Balgaddy 38kV Substation,
Kishoge,
Lucan,
Co. Dublin.

Title: Balgaddy 38kV Northern Elevation

Drawing No: Balgaddy 38kV_PL_04

Issue Date: 23 January 2022

Drawn By: N. Fitzpatrick

Opp App by:

Scale: 1:200 **OS Map No:** 3261-c

