

# Appendix 1

## Technical Justification

ESB Telecoms Ltd, Balgaddy 38kV  
January 2022



2022 Bianconi Avenue



Citywest Business  
Campus  
Dublin 24 D24 HX03  
T +353 1 671 4444  
eir.ie

Planning Department  
South Dublin County Council  
County Hall,  
Tallaght,  
Dublin 24,  
D24 A3XC

19<sup>th</sup> January 2022

**Our Ref: DN\_1270**

**Re: Proposed Meteor installation @ ESB Balgaddy 38Kv station**

Dear Sirs and Madams,

As part of Eir Ltd licensing requirements and the continuing rollout of their 3G and 4G networks, Eir needs to maintain a site in ESB Balgaddy 38Kv station.

DN\_1270 is one of the busiest sites in the Eir Network on a consistent basis and is regularly in the Top Ten busiest sites on the Eir Network.

Without a site in this part of Lucan , parts of this area will continue to suffer a severe degradation in mobile voice and data services which leads to poor mobile coverage and as a result there would be a large number of dropped / blocked calls and poor data sessions

which will also possibly limit people's ability to work and study from home on the Eir network in this area if we are unable to maintain coverage and upgrade Eir's coverage in the area.

Areas which will be improved by this site upgrade will include Tullyhall Ave , Oldbridge Park, Haydens Park and a large stretch of the Trainline Yours sincerely,

Paul Phibbs

RF Design

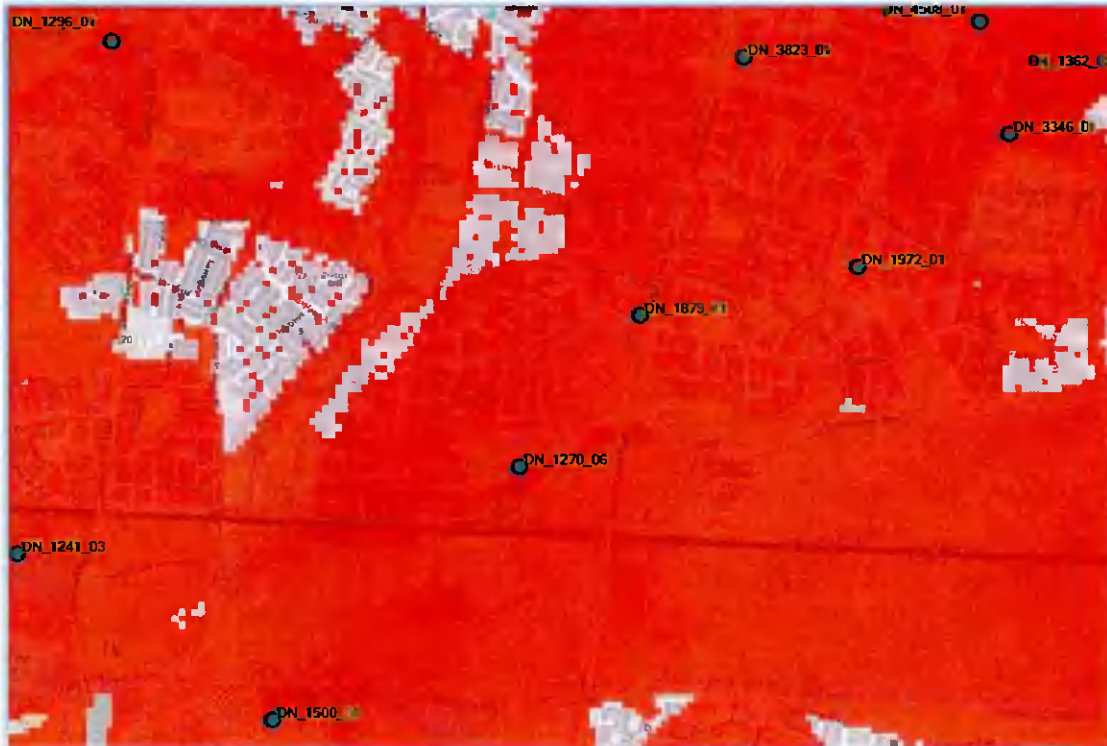
*By email*

---

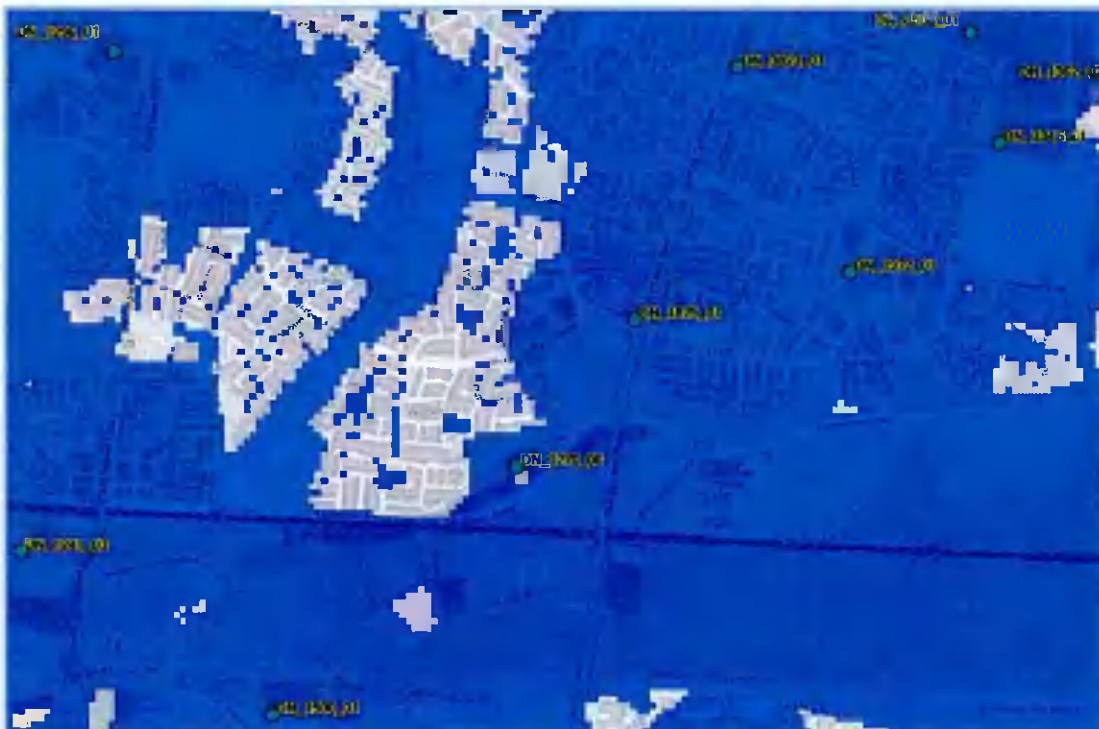


## Eir's Balgaddy 38kV Coverage Plots

The first picture depicts the existing 4G indoor coverage in the area, the a high level of indoor coverage shown in red. This coverage is delivered from the base stations in the area, marked by light blue dots. DN\_1270\_06 denotes the application site at Balgaddy 38kV substation site.



The second map shows the indoor coverage with the application site removed.



The third map shows the area where coverage will be negatively impacted for all Eir customers. An alternative structure will be needed in the area to service end users in the area outlined in blue on this map.

