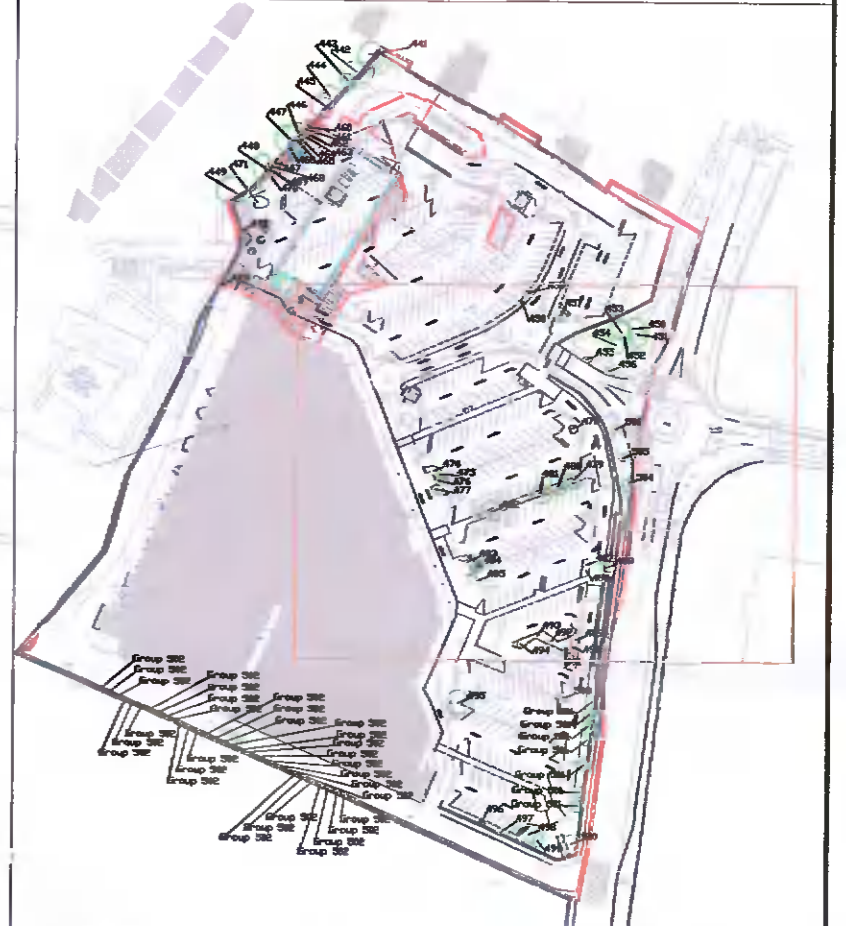




ARCHITECT
JENNINGS DESIGNSTUDIO

- LEGEND
- ARBORICULTURAL IMPACT**
- TREES TO BE RETAINED
 - TREES TO BE REMOVED TO FACILITATE DEVELOPMENT
 - TREES OF VERY LOW VALUE AND QUALITY TO BE REMOVED IN THE INTERESTS OF SOUND ARBORICULTURAL MANAGEMENT
- EXISTING SITE BOUNDARY
 - LAND OWNERSHIP BOUNDARY
 - WORKS SUBJECT TO THIS PLANNING APPLICATION



REVISIONS		
REV	DATE	DESCRIPTION

PROJECT: LUCAN SHOPPING CENTRE		JOB NO. TLUC001
DRAWING: ARBORICULTURAL IMPACT (2of3)	DATE: 17-12-21	SCALE: 1:250 @ A1
DRAWN BY: NALL MCBRIDE		NMB INITIALS
STATUS: PLANNING		REVISION:
DRAWING NO. 107		

NOTES
Do Not Scale. Use Figure Dimensions Only.
Note the Classification, Purpose and the Specialty Mark.
© THIS DRAWING IS COPYRIGHT OF CMK HORTICULTURE + ARBORICULTURE LTD.

CMK
Hort & Arb Ltd.