

RFI no. 1. (d)

A Residential Unit introduced



Pink bubble supercedes planning amendment application and relates to RFI Reg.Ref: SDZ21A/0020



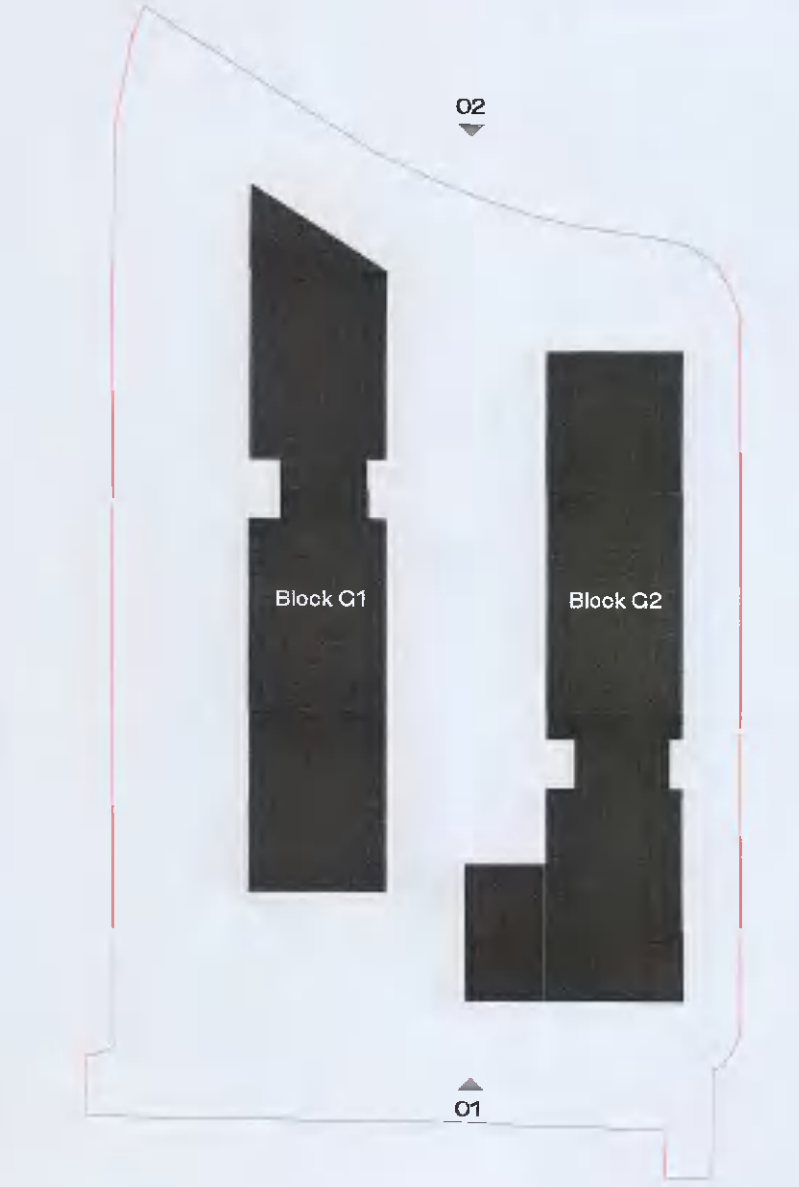
Red dashed line indicates extent of amendments to proposal from previous planning application SDZ21A/0007

ALL DIMENSIONS TO BE CHECKED ON SITE
NO DIMENSIONS TO BE SCALED FROM THIS DRAWING
DRAWING IS TO BE READ IN CONJUNCTION WITH RELEVANT CONSULTANTS DRAWINGS

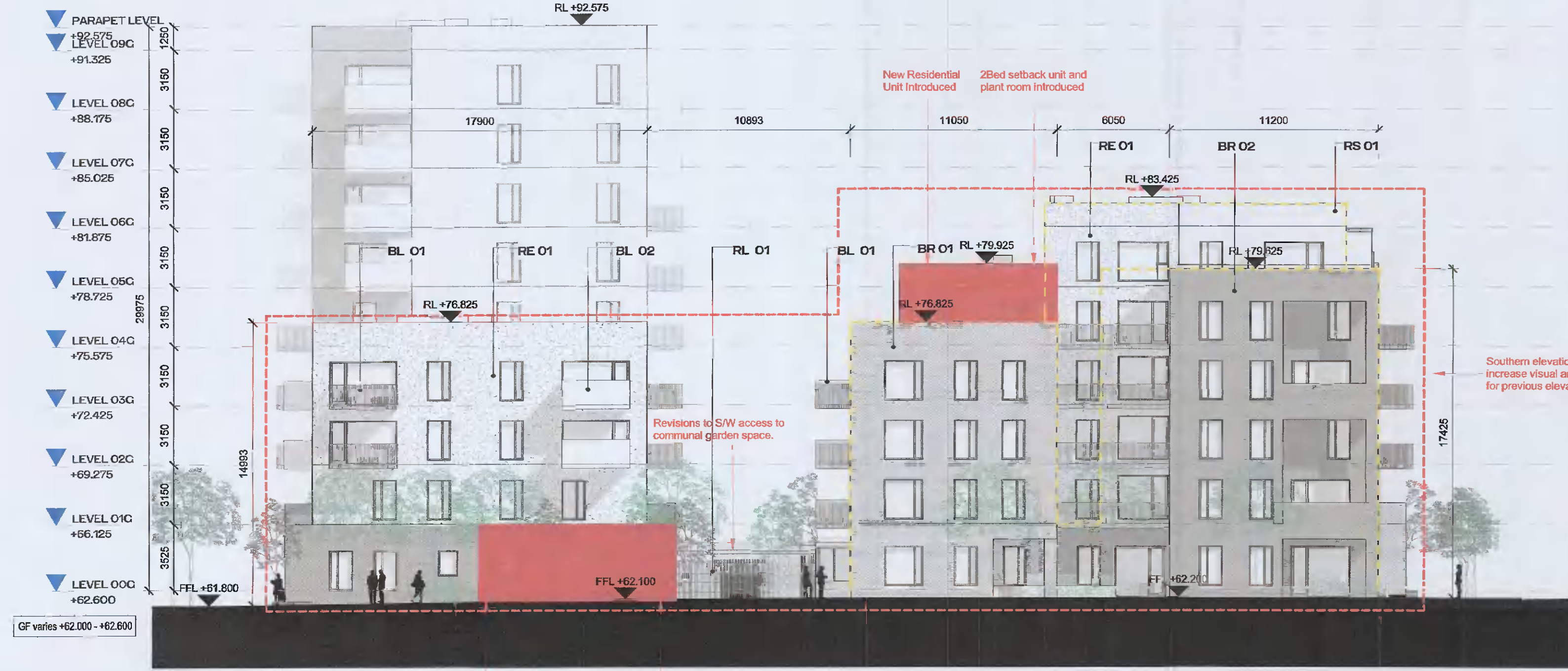
Legend:

Irish Transverse Mercator (ITM)
MALIN HEAD LEVELLING DATUM
OSi Licence No.: 50145077

Yellow dash line indicates previous elevation outline

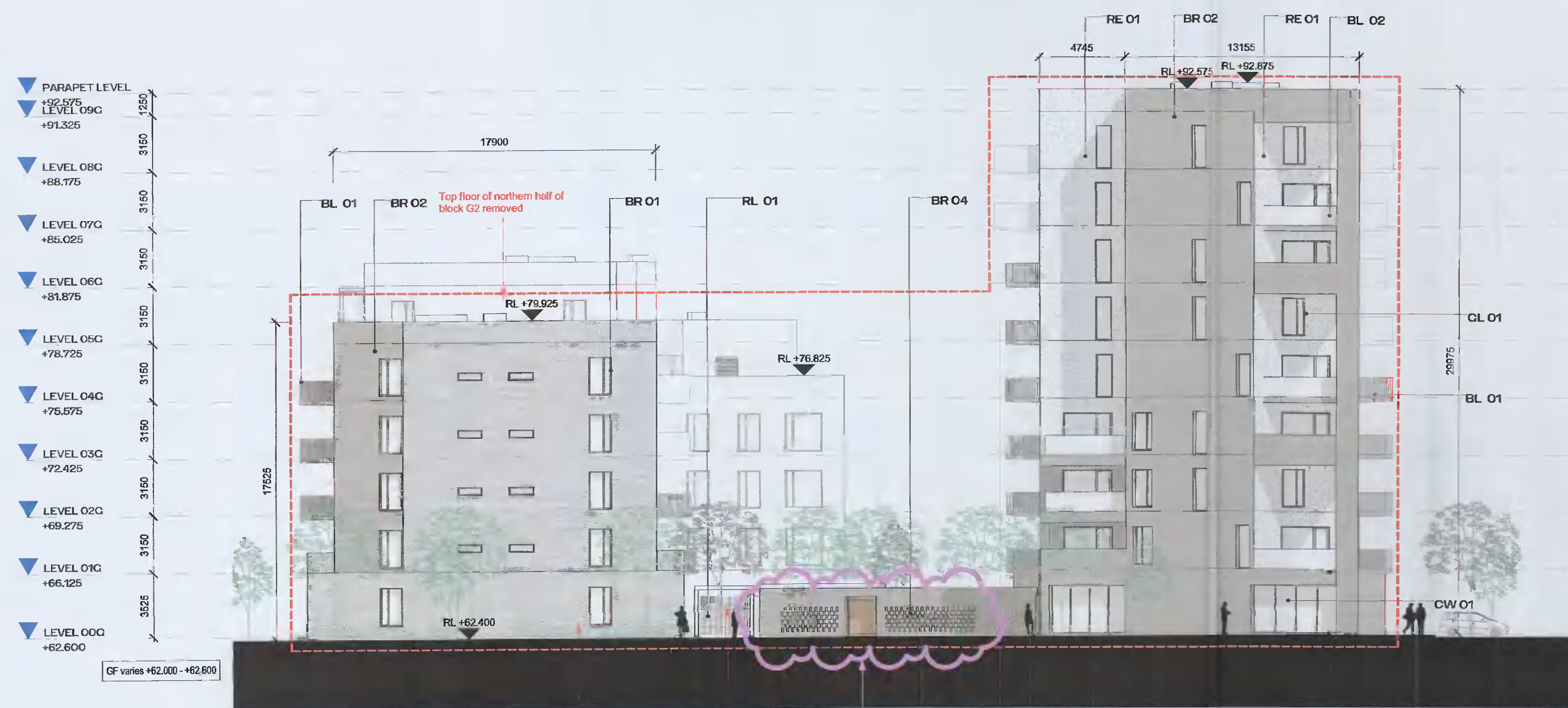


ELEVATION MATERIAL LEGEND



1 GA - ELEVATION - SOUTH - PLANNING
1 : 200

- BC 01 SELECTED BICYCLE STORE RAILING
- BL 01 BALCONY SYSTEM WITH PPC METAL RAILING
- BL 02 BALCONY SYSTEM WITH GLAZED BALUSTRADE
- BR 01 SELECTED LIGHT COLOURED BRICK
- BR 02 SELECTED DARK COLOURED BRICK
- BR 03 SELECTED GLAZED BRICK
- BR 04 SELECTED HIT AND MISS BRICK
- BR 05 SELECTED GLAZED HIT AND MISS BRICK
- CW 01 SELECTED CURTAIN WALL GLAZING SYSTEM
- DR 01 SELECTED GLAZED ENTRANCE DOOR AND SIGNAGE
- ES 01 ESB DOORS
- CL 01 SELECTED DOUBLE GLAZED WINDOW SYSTEM
- RE 01 EXTERNAL INSULATED RENDER FINISH
- RL 01 SELECTED RAILING SYSTEM
- RS 01 SELECTED METAL RAINSCREEN CLADDING



2 GA - ELEVATION - NORTH - PLANNING
1 : 200

RFI no. 4.

HJL Drawing Number on previously lodged planning application (SDZ21A/0007)
ADC-HJL-G-ZZ-DR-A-2011 Revision (P02)

REV	DATE	DESCRIPTION	CHK	DRN
P01	07/02/2022	ISSUED FOR FURTHER INFORMATION	RJ	HJL
P03	11/10/2021	ISSUED FOR PLANNING APPROVAL	RJ	SH
P02	13/08/2021	ISSUED FOR FURTHER INFORMATION	DB	EA
P01	13/04/2021	ISSUED FOR PLANNING APPROVAL	RU	EA

STATUS CODE DESCRIPTION
ISSUED FOR FURTHER INFORMATION

CLIENT
QUINTAIN IRELAND LTD.

PROJECT
ADAMSTOWN STATION BLOCK G

DRAWING
BLOCK G - GENERAL ARRANGEMENT - NORTH & SOUTH ELEVATIONS

PROJECT NUMBER: 550749 DATE: 13/08/21

SCALE@ A1: As indicated DRAWN/CHECKED: RJ/DB

STATUS CODE: A1 DRAWING NUMBER: ADC-HJL-G-ZZ-DR-A-2011 REVISION: P04

Henry J Lyons

Architecture + Interiors
henryjlyons.com +353 1 888 3333 info@henryjlyons.com 51-54 Pearse Street Dublin D02 KA66