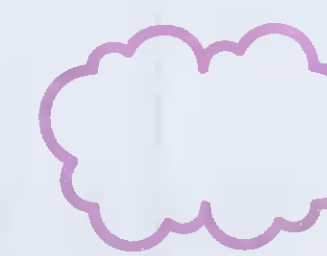
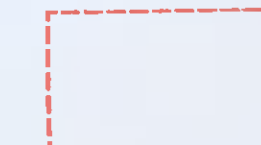


RFI no. 1. (d)

A Residential Unit introduced



Pink bubble supercedes planning amendment application and relates to RFI Reg.Ref: SDZ21A/0020



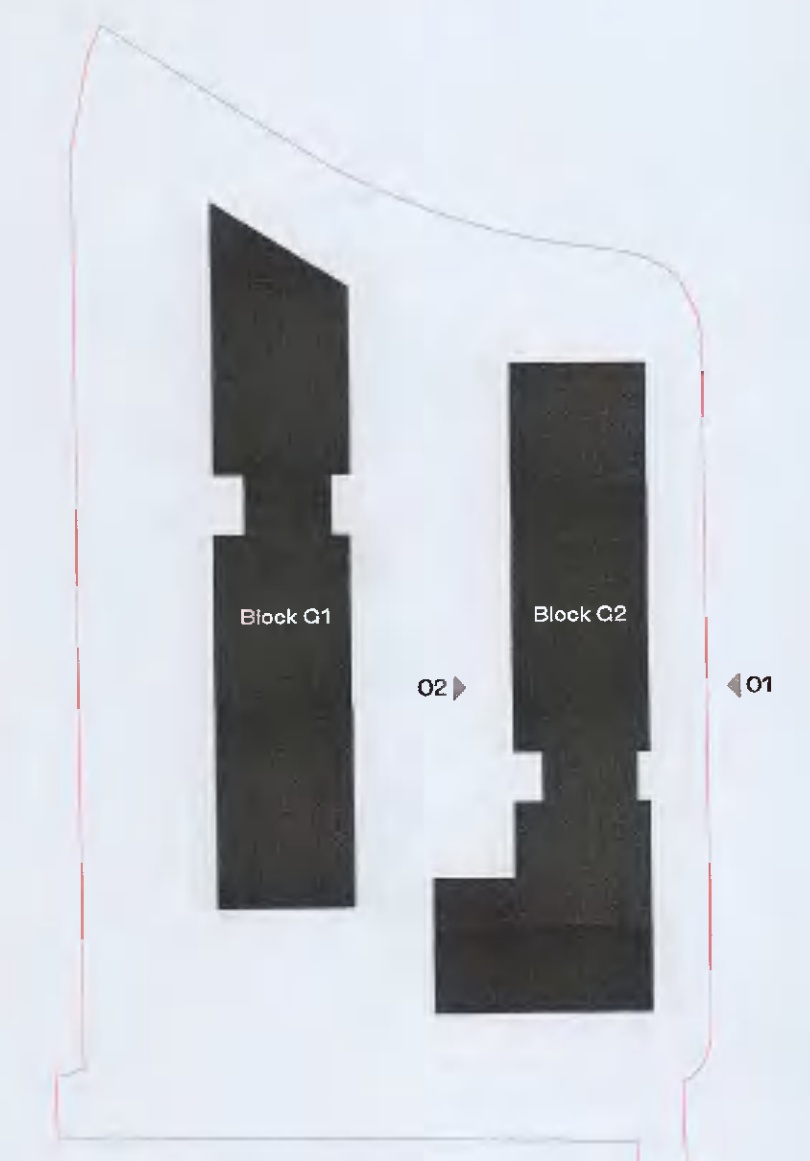
Red dashed line indicates extent of amendments to proposal from previous planning application SDZ21A/0007

ALL DIMENSIONS TO BE CHECKED ON SITE
NO DIMENSIONS TO BE SCALED FROM THIS DRAWING
DRAWING IS TO BE READ IN CONJUNCTION WITH RELEVANT CONSULTANTS DRAWINGS

Legend:

Irish Transverse Mercator (ITM)
MALIN HEAD LEVELLING DATUM
OSI Licence No.: 50145077

Yellow dash line indicates previous elevation outline



ELEVATION MATERIAL LEGEND

- BC 01 SELECTED BICYCLE STORE RAILING
- BL 01 BALCONY SYSTEM WITH PPC METAL RAILING
- BL 02 BALCONY SYSTEM WITH GLAZED BALUSTRADE
- BR 01 SELECTED LIGHT COLOURED BRICK
- BR 02 SELECTED DARK COLOURED BRICK
- BR 03 SELECTED GLAZED BRICK
- BR 04 SELECTED HIT AND MISS BRICK
- BR 05 SELECTED GLAZED HIT AND MISS BRICK
- CW 01 SELECTED CURTAIN WALL GLAZING SYSTEM
- DR 01 SELECTED GLAZED ENTRANCE DOOR AND SIGNAGE
- ES 01 ESB DOORS
- QL 01 SELECTED DOUBLE GLAZED WINDOW SYSTEM
- RE 01 EXTERNAL INSULATED RENDER FINISH
- RL 01 SELECTED RAILING SYSTEM
- RS 01 SELECTED METAL RAINSCREEN CLADDING

REV	DATE	DESCRIPTION	CHK	DRN
P04	07/02/2022	ISSUED FOR FURTHER INFORMATION	RJ	HJL
P03	11/10/2021	ISSUED FOR PLANNING APPROVAL	RJ	SH
P02	13/08/2021	ISSUED FOR FURTHER INFORMATION	DB	EA
P01	13/04/2021	ISSUED FOR PLANNING APPROVAL	RJ	EA

STATUS CODE: DESCRIPTION
ISSUED FOR FURTHER INFORMATION

CLIENT
QUINTAIN IRELAND LTD.

PROJECT
ADAMSTOWN STATION BLOCK G

DRAWING
BLOCK G2 - GENERAL ARRANGEMENT - EAST & WEST ELEVATIONS

PROJECT NUMBER	DATE
550749	13/08/21

SCALE@ A1:	DRAWN/CHECKED:
As indicated	RL/D6

STATUS CODE:	DRAWING NUMBER	REVISION
A1	ADC-HJL-G-ZZ-DR-A-2012	P04

Henry J Lyons

Architecture + Interiors
henryjlyons.com
+353 1 888 3333
info@henryjlyons.com
51-54 Pearse Street
Dublin D12 K466



GA - ELEVATION - EAST - G2 - PLANNING
1 : 200

Ground floor residential unit replaced with plant/esh substation.
Note: Road levels incorporated and ground floor units adjusted.



GA - ELEVATION - WEST - G2 - PLANNING
1 : 200

RFI no. 4.

New Residential Unit Introduced
New Residential Unit Introduced
Podium omitted and replaced with ground floor residential units, plant rooms and bicycle stores.
New Residential Unit Introduced
Wall replaced with fence and gate

HJL Drawing Number on previously lodged planning application (SDZ21A/0007)
ADC-HJL-C-ZZ-DR-A-2012 Revision (P02)