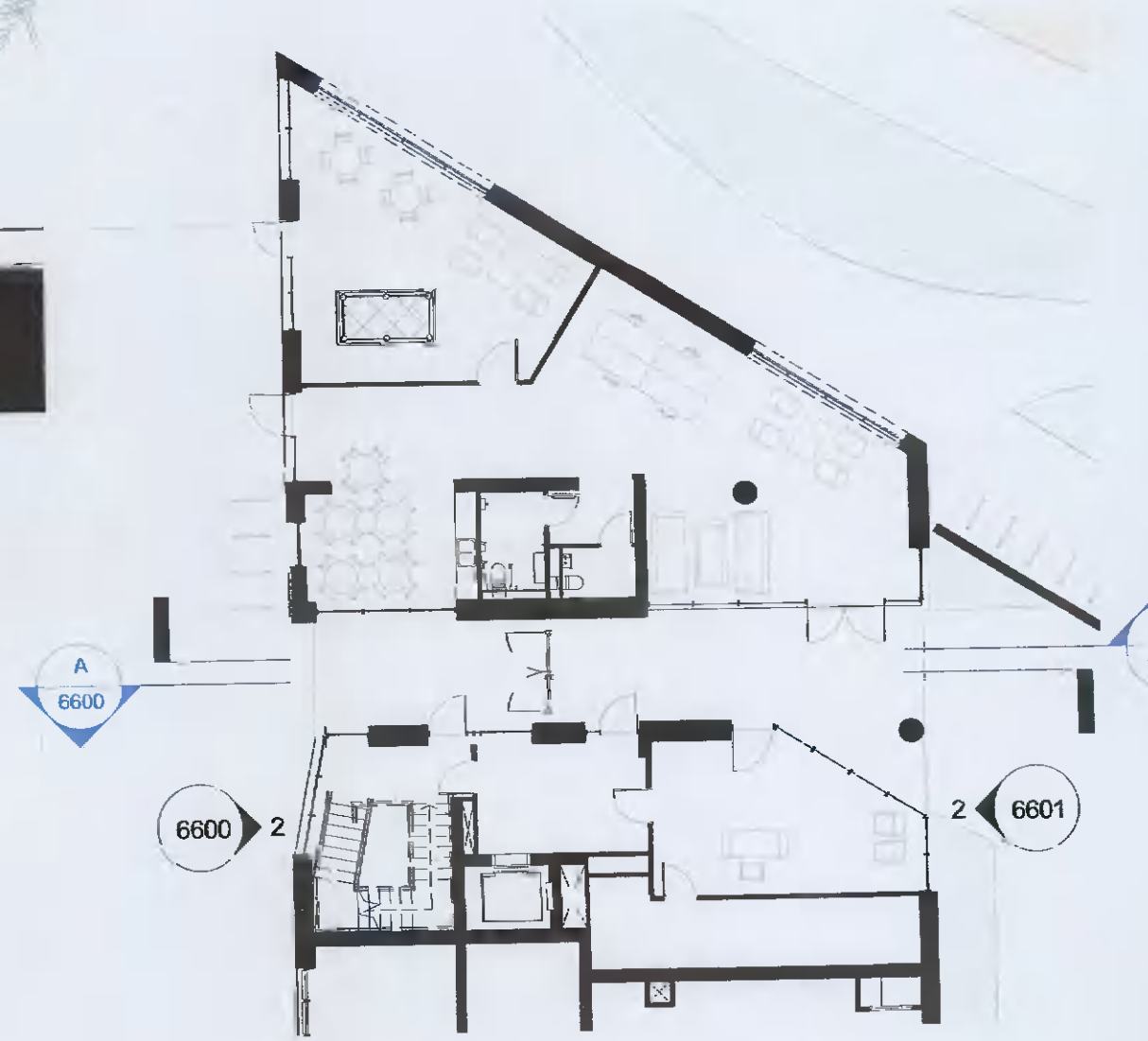


ALL DIMENSIONS TO BE CHECKED ON SITE
NO DIMENSIONS TO BE SCALED FROM THIS DRAWING
DRAWING IS TO BE READ IN CONJUNCTION WITH RELEVANT CONSULTANTS DRAWINGS

Pink bubble supercedes planning amendment application and relates to RFI Reg.Ref: SDZ21A/0020

Key Plan:



ELEVATION MATERIAL LEGEND

- BC 01 SELECTED BICYCLE STORE RAILING
- BL 01 BALCONY SYSTEM WITH PPC METAL RAILING
- BL 02 BALCONY SYSTEM WITH GLAZED BALUSTRADE
- BR 01 SELECTED LIGHT COLOURED BRICK
- BR 02 SELECTED DARK COLOURED BRICK
- BR 03 SELECTED GLAZED BRICK
- BR 04 SELECTED HIT AND MISS BRICK
- BR 05 SELECTED GLAZED HIT AND MISS BRICK
- CW 01 SELECTED CURTAIN WALL GLAZING SYSTEM
- DR 01 SELECTED GLAZED ENTRANCE DOOR AND SIGNAGE
- ES 01 ESB DOORS
- GL 01 SELECTED DOUBLE GLAZED WINDOW SYSTEM
- RE 01 EXTERNAL INSULATED RENDER FINISH
- RL 01 SELECTED RAILING SYSTEM
- RS 01 SELECTED METAL RAINSCREEN CLADDING

REV	DATE	DESCRIPTION	CHK	DRN
P04	07/02/2022	ISSUED FOR FURTHER INFORMATION	RJ	HJL
P03				
P02				
P01				

STATUS CODE: DESCRIPTION
ISSUED FOR FURTHER INFORMATION

CLIENT
QUINTAIN IRELAND LTD.

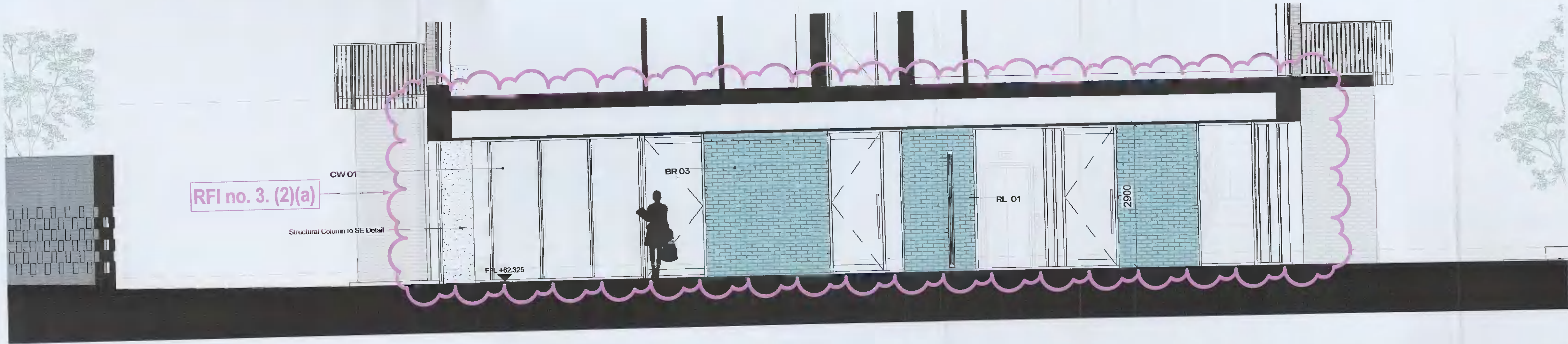
PROJECT
ADAMSTOWN STATION BLOCK G

DRAWING
EAST-WEST PEDESTRIAN ACCESS
SHEET 01

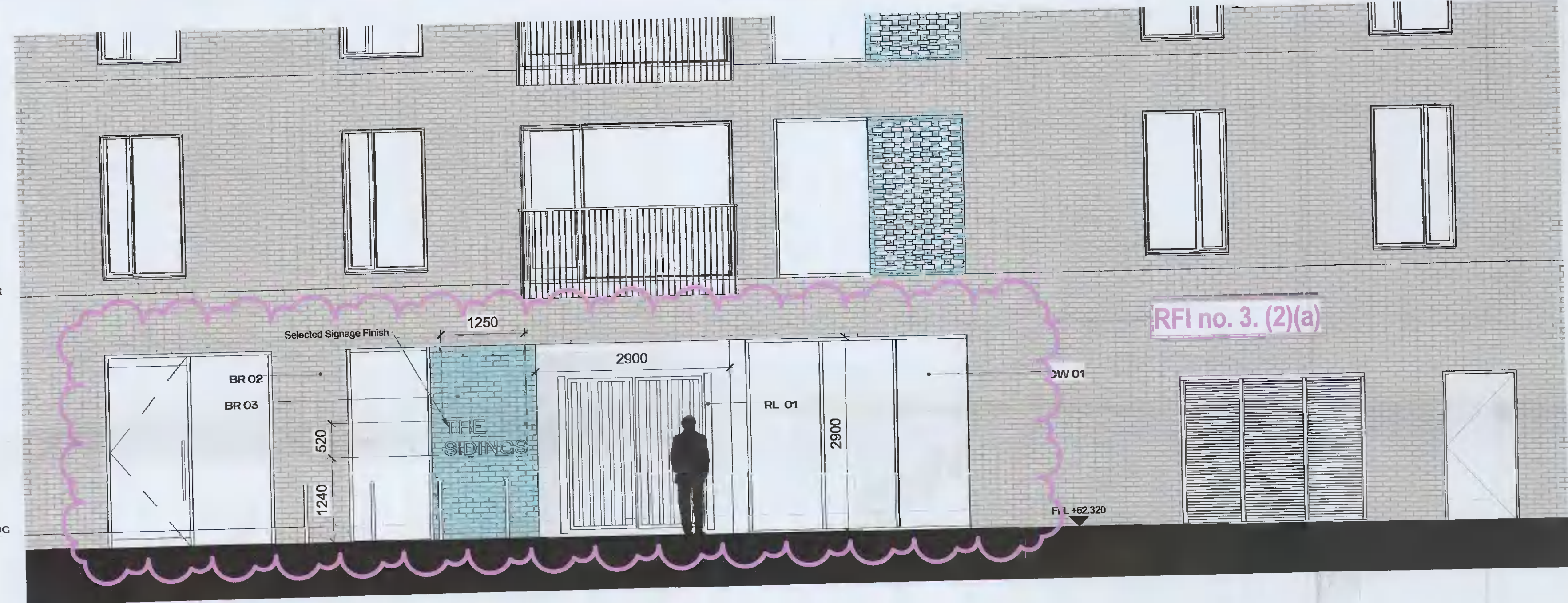
PROJECT NUMBER	DATE	
950749	01/14/22	
SCALE @ A1:	DRAWN/CHECKED:	
As indicated	SH/RJ	
STATUS CODE:	DRAWING NUMBER	REVISION
A1	ADC-HJL-G-XX-DR-A-6600	P04

Henry J Lyons

Architecture + Interiors
henryjlyons.com
+353 1 888 3333
info@henryjlyons.com
51-54 Pearse Street
Dublin D02 KA66



1 East-West Pedestrian Access - Section A-A
1:50



2 East-West Pedestrian Access - Street Elevation
1:50



East-West Pedestrian Access - Approach from Western North-South Street