

ALL DIMENSIONS TO BE CHECKED ON SITE  
NO DIMENSIONS TO BE SCALED FROM THIS DRAWING  
DRAWINGS TO BE READ IN CONJUNCTION WITH RELEVANT CONSULTANTS DRAWINGS

**APARTMENTS BY TYPE**

Count	Unit Type	Type Name	APARTMENT AREA		Bk Name
			Area sqm	Min. Area	
6	1B	T.101.A	45.6	45.0	T.101.A
8	1B	T.102.A	46.0	45.0	T.102.A
50	1B	T.103.A	49.8	45.0	T.103.A
1	1B	T.104.A	49.8	45.0	T.104.A
1	1B	T.105.A	50.9	45.0	T.105.A
1	1B	T.106.A	45.9	45.0	T.106.A
1	1B	T.107.A	51.8	45.0	T.107.A
6	1B	T.108.CF	52.9	45.0	T.108.CF
1	1B	T.109.CF	51.1	45.0	T.109.CF
1	1B	T.110.CF	56.1	45.0	T.110.CF
1Bt.83					
3	2B-3P	T.201.A	63.0	63.0	T.201.A
3	2B-3P	T.207.A	66.6	63.0	T.207.A
4	2B-3P	T.215.A	63.7	63.0	T.215.A
1	2B-3P	T.216.A	65.6	63.0	T.216.A
2B-3P:11					
2B	2B-4P	T.202.A	80.3	73.0	T.202.A
3	2B-4P	T.203.A	78.1	73.0	T.203.A
3	2B-4P	T.204.A	74.6	73.0	T.204.A
12	2B-4P	T.205.A	74.8	73.0	T.205.A
3	2B-4P	T.206.A	83.2	73.0	T.206.A
8	2B-4P	T.208.A	80.3	73.0	T.208.A
4	2B-4P	T.209.A	81.5	73.0	T.209.A
1	2B-4P	T.210.A	76.8	73.0	T.210.A
5	2B-4P	T.211.A	76.6	73.0	T.211.A
3	2B-4P	T.212.A	82.6	73.0	T.212.A
3	2B-4P	T.213.A	76.7	73.0	T.213.A
4	2B-4P	T.214.A	74.7	73.0	T.214.A
8	2B-4P	T.220.CF	82.8	73.0	T.220.CF
1	2B-4P	T.221.CF	74.7	73.0	T.221.CF
1	2B-4P	T.222.CF	74.7	73.0	T.222.CF
1	2B-4P	T.223.CF	73.0	73.0	T.223.CF
2B-4P:88					
2	3B	T.301.A	98.8	90.0	T.301.A
3B:2					
Grand total: 184					

Red dashed line indicates extent of amendments to proposal from previous planning application SDZ21A/0007

H.J.L. Drawing Number on previously lodged planning application (SDZ21A/0007)  
**ADC-HUL-G-ZZ-DR-A-8002 Revision (PO2)**

**RFI 1. (c)**  
Apt G2S.505 is T.210.A - HQA states 25.1 sqm combined bedroom area (compliant) and drawing 8005 states 13.3 sqm for main bedroom and 11.8 sqm for second bedroom

Apt G2S.501 is T.107.A - HQA states 11.6sqm and drawing 8002 states 11.6 sqm

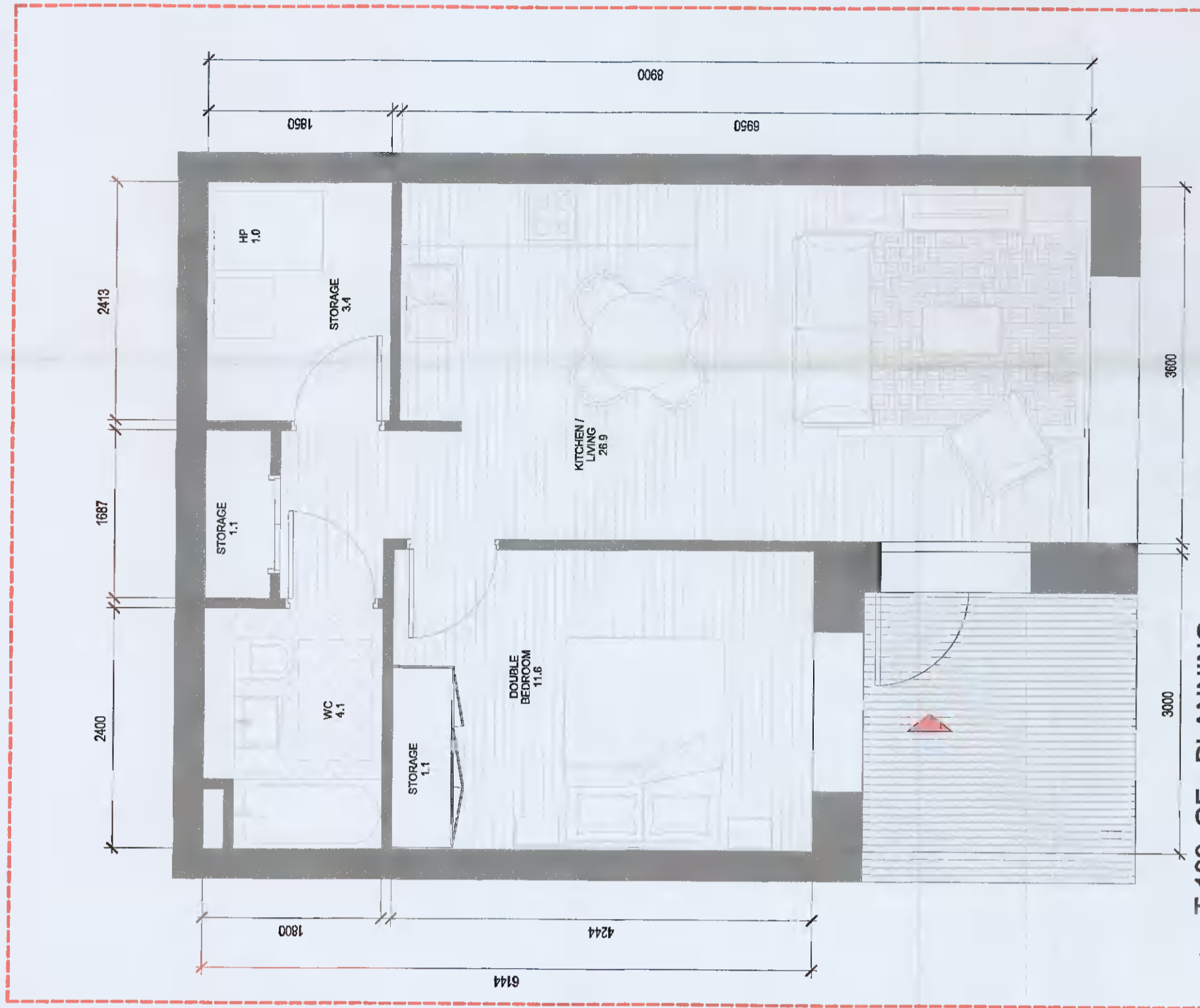
REV	DATE	DESCRIPTION	CHKD	DRN
R1	18/02/2022	ISSUED FOR FURTHER INFORMATION	RU	HUL
R2	11/02/2021	ISSUED FOR FURTHER INFORMATION	RU	SH
R3	18/02/2021	ISSUED FOR FURTHER INFORMATION	RU	EA
R4	13/02/2021	ISSUED FOR FURTHER INFORMATION	RU	EA
R5	13/02/2021	ISSUED FOR FURTHER INFORMATION	RU	EA

**ISSUED FOR FURTHER INFORMATION**

CLIENT: **QUINTAIN IRELAND LTD.**  
PROJECT: **ADAMSTOWN STATION BLOCK G**  
DRAWING: **1 BED APARTMENT TYPES SHEET 2**

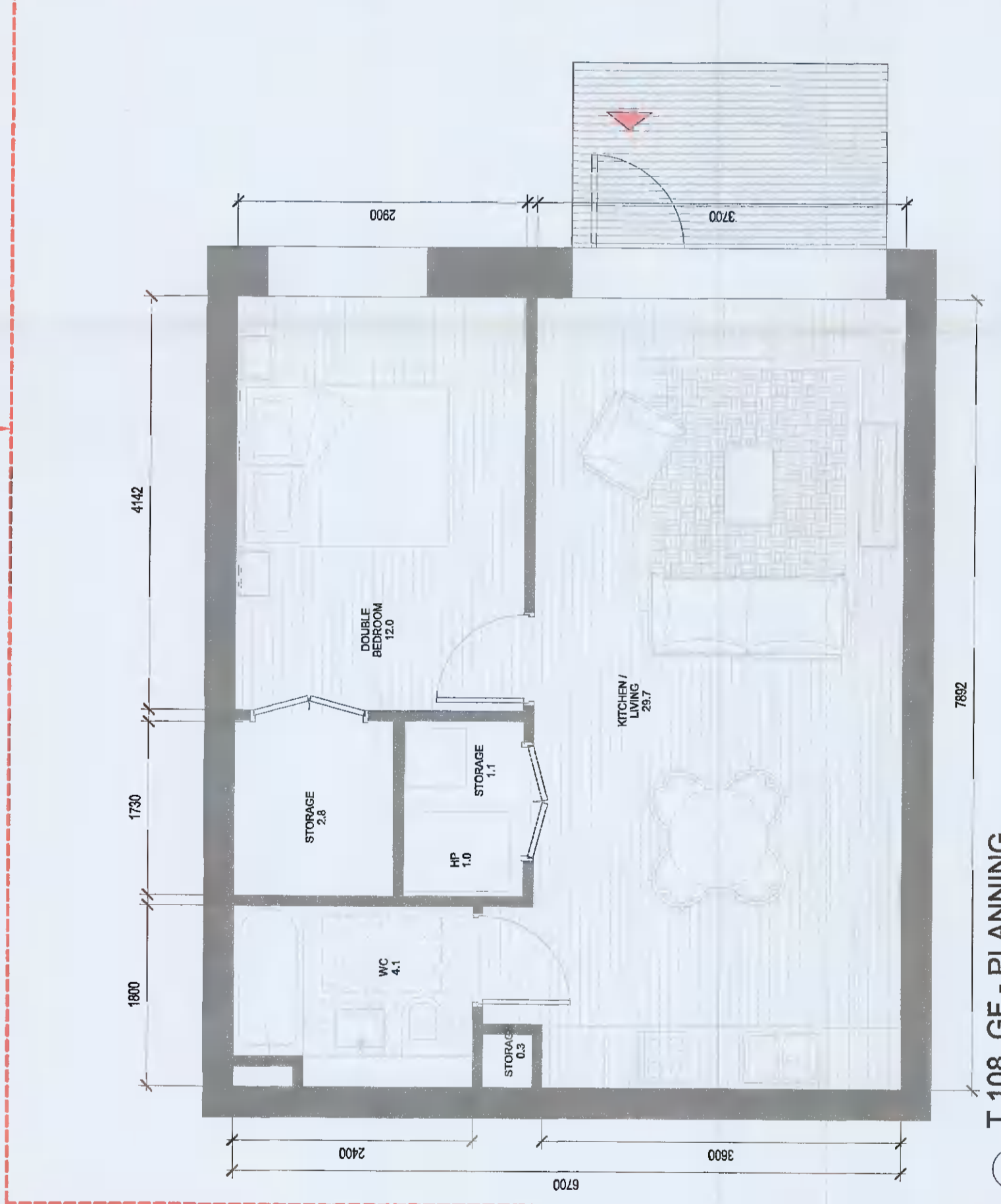
PROJECT NUMBER: 550149  
DATE: 13/08/21  
SCALE @ A1: As Indicated  
DRAWING CHECKED: RU/DB  
DRAWING NUMBER: ADC-HUL-G-ZZ-DR-A-8002  
REVISION: P04

**Henry J Lyons**  
Architecture + Interiors  
+353 1 888 3333  
info@henryjlyons.com  
51-54 Peeters Street  
Dublin D02 K466



3 T.109\_GF - PLANNING  
1:50

T.109_GF SPACE REQUIREMENTS						
Required Apartment Area	45.0 m <sup>2</sup>	Yes	45.0 m <sup>2</sup>	Yes	45.0 m <sup>2</sup>	Yes
Required Kitchen - Living Area	28.3 m <sup>2</sup>	Yes	28.3 m <sup>2</sup>	Yes	28.3 m <sup>2</sup>	Yes
Required Kitchen - Living Area	20.0 m <sup>2</sup>	Yes	20.0 m <sup>2</sup>	Yes	20.0 m <sup>2</sup>	Yes
Required Total Bedroom Area	11.4 m <sup>2</sup>	Yes	11.4 m <sup>2</sup>	Yes	11.4 m <sup>2</sup>	Yes
Required Total Bedroom Area	11.8 m <sup>2</sup>	Yes	11.8 m <sup>2</sup>	Yes	11.8 m <sup>2</sup>	Yes
Required Total Storage Area	3.0 m <sup>2</sup>	Yes	3.0 m <sup>2</sup>	Yes	3.0 m <sup>2</sup>	Yes
Required Total Storage Area	3.0 m <sup>2</sup>	Yes	3.0 m <sup>2</sup>	Yes	3.0 m <sup>2</sup>	Yes
Required Heat Pump Area	1.0 m <sup>2</sup>	Yes	1.0 m <sup>2</sup>	Yes	1.0 m <sup>2</sup>	Yes

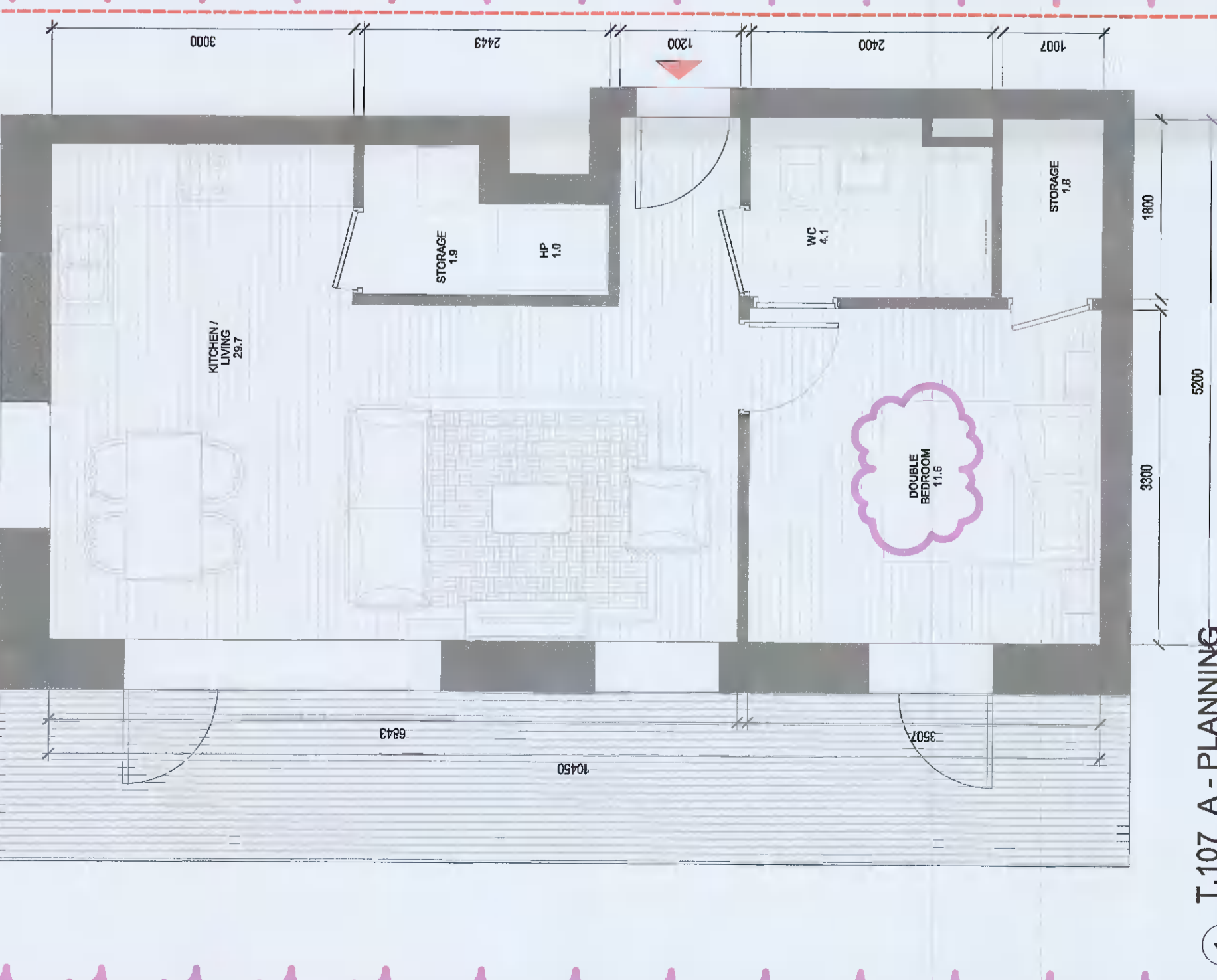


2 T.108\_GF - PLANNING  
1:50

T.108_GF SPACE REQUIREMENTS						
Required Apartment Area	45.0 m <sup>2</sup>	Yes	45.0 m <sup>2</sup>	Yes	45.0 m <sup>2</sup>	Yes
Required Kitchen - Living Area	23.0 m <sup>2</sup>	Yes	23.0 m <sup>2</sup>	Yes	23.0 m <sup>2</sup>	Yes
Required Kitchen - Living Area	20.0 m <sup>2</sup>	Yes	20.0 m <sup>2</sup>	Yes	20.0 m <sup>2</sup>	Yes
Required Total Bedroom Area	12.0 m <sup>2</sup>	Yes	12.0 m <sup>2</sup>	Yes	12.0 m <sup>2</sup>	Yes
Required Total Bedroom Area	11.4 m <sup>2</sup>	Yes	11.4 m <sup>2</sup>	Yes	11.4 m <sup>2</sup>	Yes
Required Total Storage Area	3.0 m <sup>2</sup>	Yes	3.0 m <sup>2</sup>	Yes	3.0 m <sup>2</sup>	Yes
Required Total Storage Area	3.0 m <sup>2</sup>	Yes	3.0 m <sup>2</sup>	Yes	3.0 m <sup>2</sup>	Yes
Required Heat Pump Area	1.0 m <sup>2</sup>	Yes	1.0 m <sup>2</sup>	Yes	1.0 m <sup>2</sup>	Yes

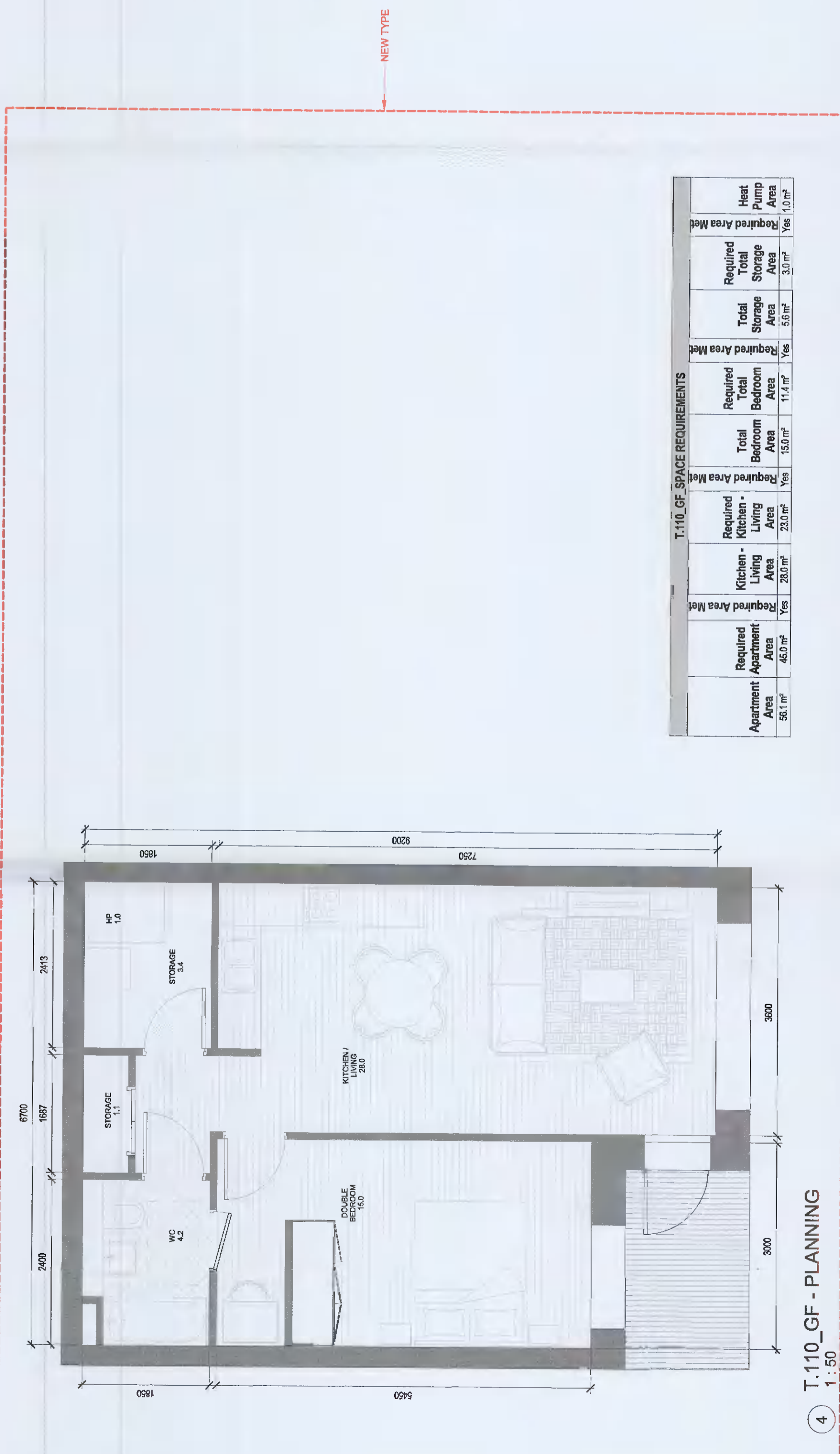
RFI no. 1. (c)

NEW TYPE



1 T.107\_A - PLANNING  
1:50

T.107_A SPACE REQUIREMENTS						
Required Apartment Area	45.0 m <sup>2</sup>	Yes	45.0 m <sup>2</sup>	Yes	45.0 m <sup>2</sup>	Yes
Required Kitchen - Living Area	29.7 m <sup>2</sup>	Yes	29.7 m <sup>2</sup>	Yes	29.7 m <sup>2</sup>	Yes
Required Kitchen - Living Area	23.0 m <sup>2</sup>	Yes	23.0 m <sup>2</sup>	Yes	23.0 m <sup>2</sup>	Yes
Required Total Bedroom Area	11.4 m <sup>2</sup>	Yes	11.4 m <sup>2</sup>	Yes	11.4 m <sup>2</sup>	Yes
Required Total Bedroom Area	11.8 m <sup>2</sup>	Yes	11.8 m <sup>2</sup>	Yes	11.8 m <sup>2</sup>	Yes
Required Total Storage Area	3.7 m <sup>2</sup>	Yes	3.7 m <sup>2</sup>	Yes	3.7 m <sup>2</sup>	Yes
Required Total Storage Area	3.0 m <sup>2</sup>	Yes	3.0 m <sup>2</sup>	Yes	3.0 m <sup>2</sup>	Yes
Required Heat Pump Area	1.0 m <sup>2</sup>	Yes	1.0 m <sup>2</sup>	Yes	1.0 m <sup>2</sup>	Yes



4 T.110\_GF - PLANNING  
1:50

T.110_GF SPACE REQUIREMENTS						
Required Apartment Area	45.0 m <sup>2</sup>	Yes	45.0 m <sup>2</sup>	Yes	45.0 m <sup>2</sup>	Yes
Required Kitchen - Living Area	28.0 m <sup>2</sup>	Yes	28.0 m <sup>2</sup>	Yes	28.0 m <sup>2</sup>	Yes
Required Kitchen - Living Area	23.0 m <sup>2</sup>	Yes	23.0 m <sup>2</sup>	Yes	23.0 m <sup>2</sup>	Yes
Required Total Bedroom Area	15.0 m <sup>2</sup>	Yes	15.0 m <sup>2</sup>	Yes	15.0 m <sup>2</sup>	Yes
Required Total Bedroom Area	11.4 m <sup>2</sup>	Yes	11.4 m <sup>2</sup>	Yes	11.4 m <sup>2</sup>	Yes
Required Total Storage Area	5.0 m <sup>2</sup>	Yes	5.0 m <sup>2</sup>	Yes	5.0 m <sup>2</sup>	Yes
Required Total Storage Area	3.0 m <sup>2</sup>	Yes	3.0 m <sup>2</sup>	Yes	3.0 m <sup>2</sup>	Yes
Required Heat Pump Area	1.0 m <sup>2</sup>	Yes	1.0 m <sup>2</sup>	Yes	1.0 m <sup>2</sup>	Yes

Pink bubble supercedes planning amendment and relates to RFI Reg. Ref. SDZ21A/0020