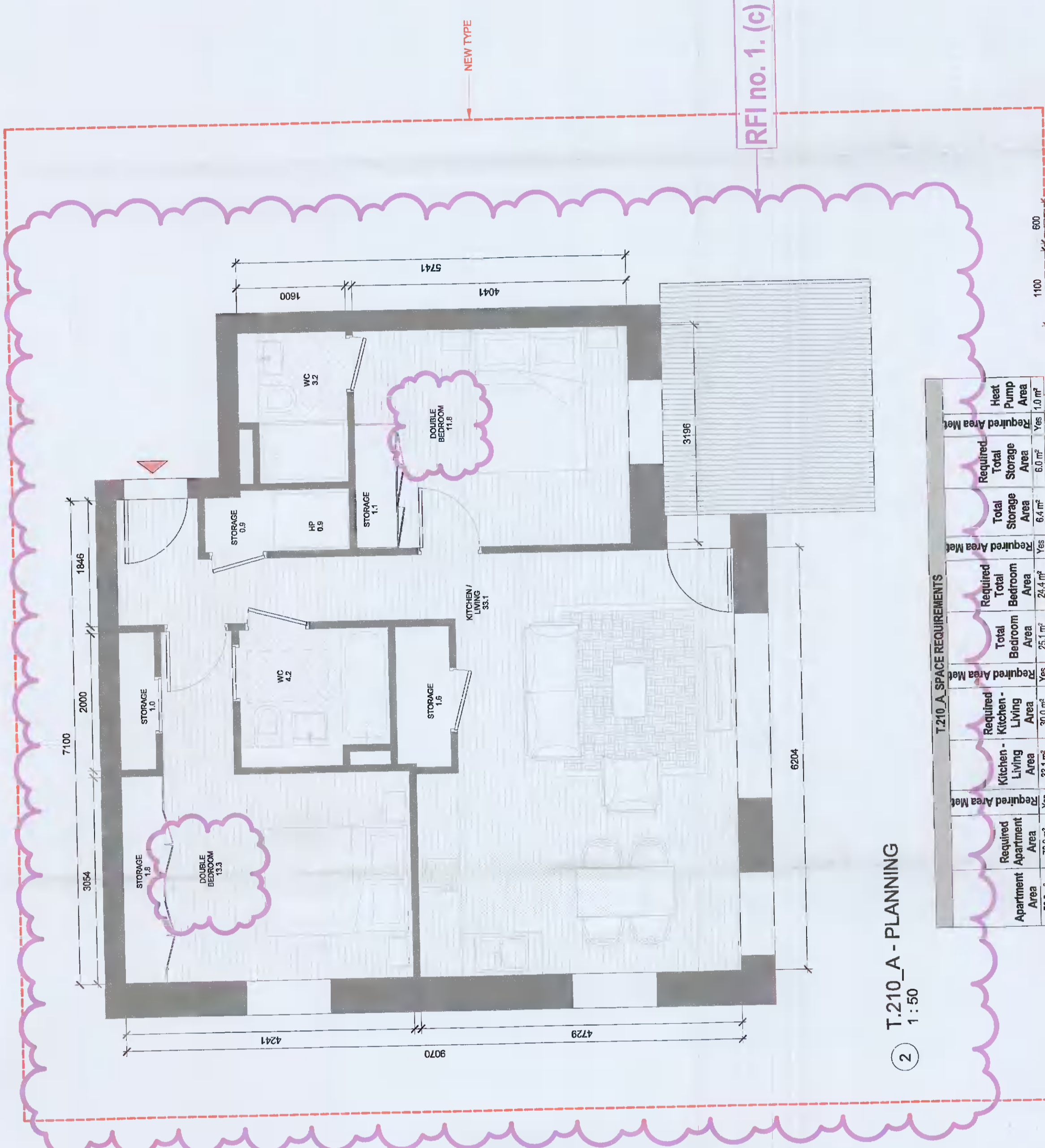


ALL DIMENSIONS TO BE CHECKED ON SITE
NO DIMENSIONS TO BE SCALED FROM THIS DRAWING
DRAWING IS TO BE READ IN CONJUNCTION WITH RELEVANT CONSULTANTS DRAWINGS

APARTMENTS BY TYPE			
Count	Unit Type	Type Name	Area sqm / Min. Area
6	1B	T-101.A	46.6
8	1B	T-102.A	45.0
1	1B	T-103.A	46.0
50	1B	T-103.A	49.6
1	1B	T-104.A	49.5
1	1B	T-105.A	50.9
1	1B	T-106.A	45.9
1	1B	T-107.A	51.8
6	1B	T-108.CF	52.9
8	1B	T-109.CF	51.1
1	1B	T-110.CF	55.1
18	83		
3	2B-3P	T-201.A	63.9
3	2B-3P	T-207.A	68.6
4	2B-3P	T-215.A	63.7
1	2B-3P	T-216.A	65.0
2B-3P-11			
2B	2B-4P	T-202.A	80.3
3	2B-4P	T-203.A	78.1
3	2B-4P	T-204.A	74.5
12	2B-4P	T-206.A	74.8
8	2B-4P	T-206.A	83.2
3	2B-4P	T-208.A	80.3
4	2B-4P	T-209.A	81.5
1	2B-4P	T-210.A	76.8
5	2B-4P	T-211.A	76.6
3	2B-4P	T-212.A	82.6
3	2B-4P	T-213.A	76.7
4	2B-4P	T-214.A	74.7
8	2B-4P	T-220.CF	82.8
1	2B-4P	T-224.CF	75.8
1	2B-4P	T-222.CF	74.7
1	2B-4P	T-225.CF	73.0
2B-4P-88			
2	3B	T-301.A	96.8
3B-2			
Grand total:			184



② T-210_A - PLANNING
1:50

Red dashed line indicates extent of amendments to proposal from previous planning application SDZ21A/0007

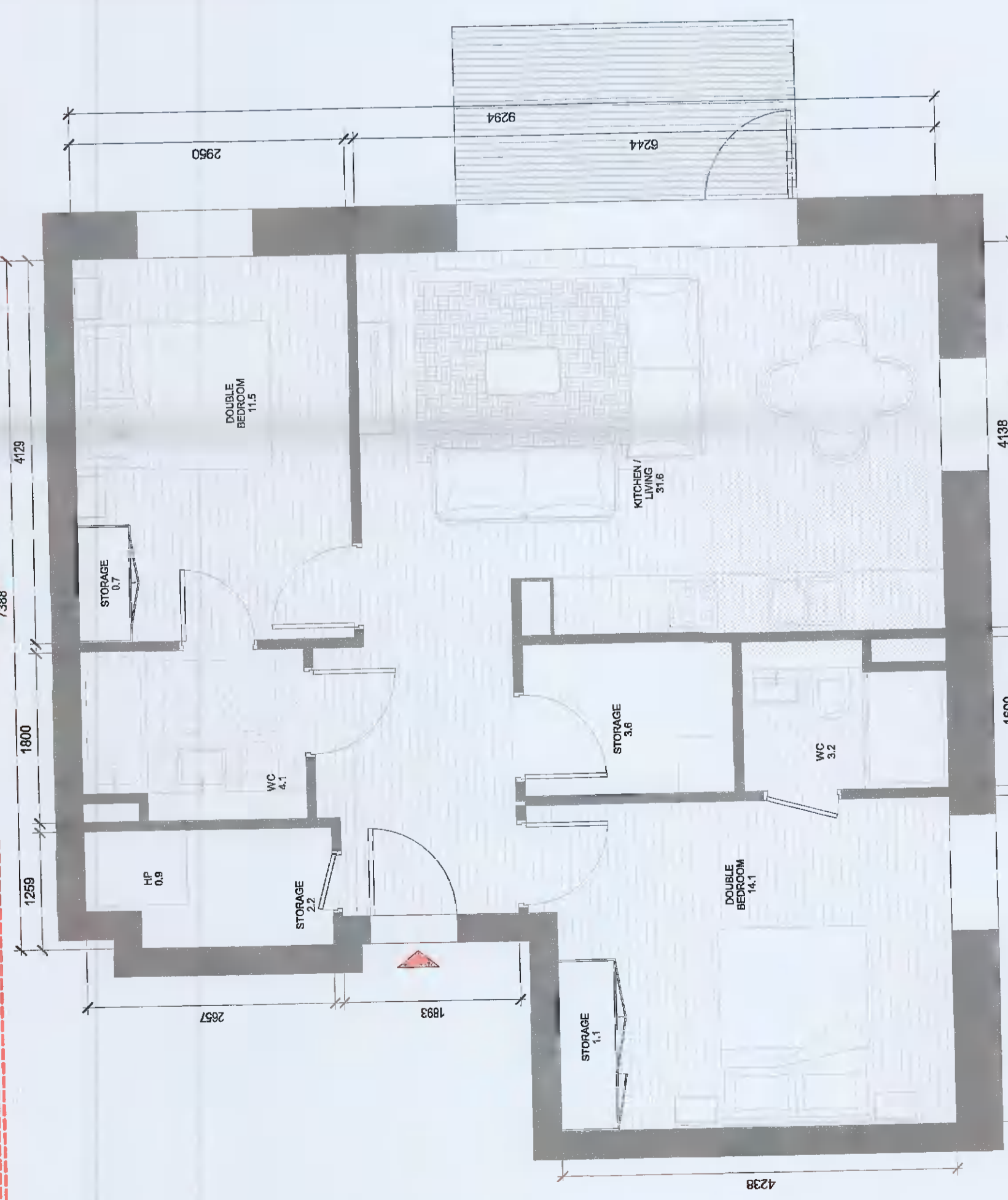
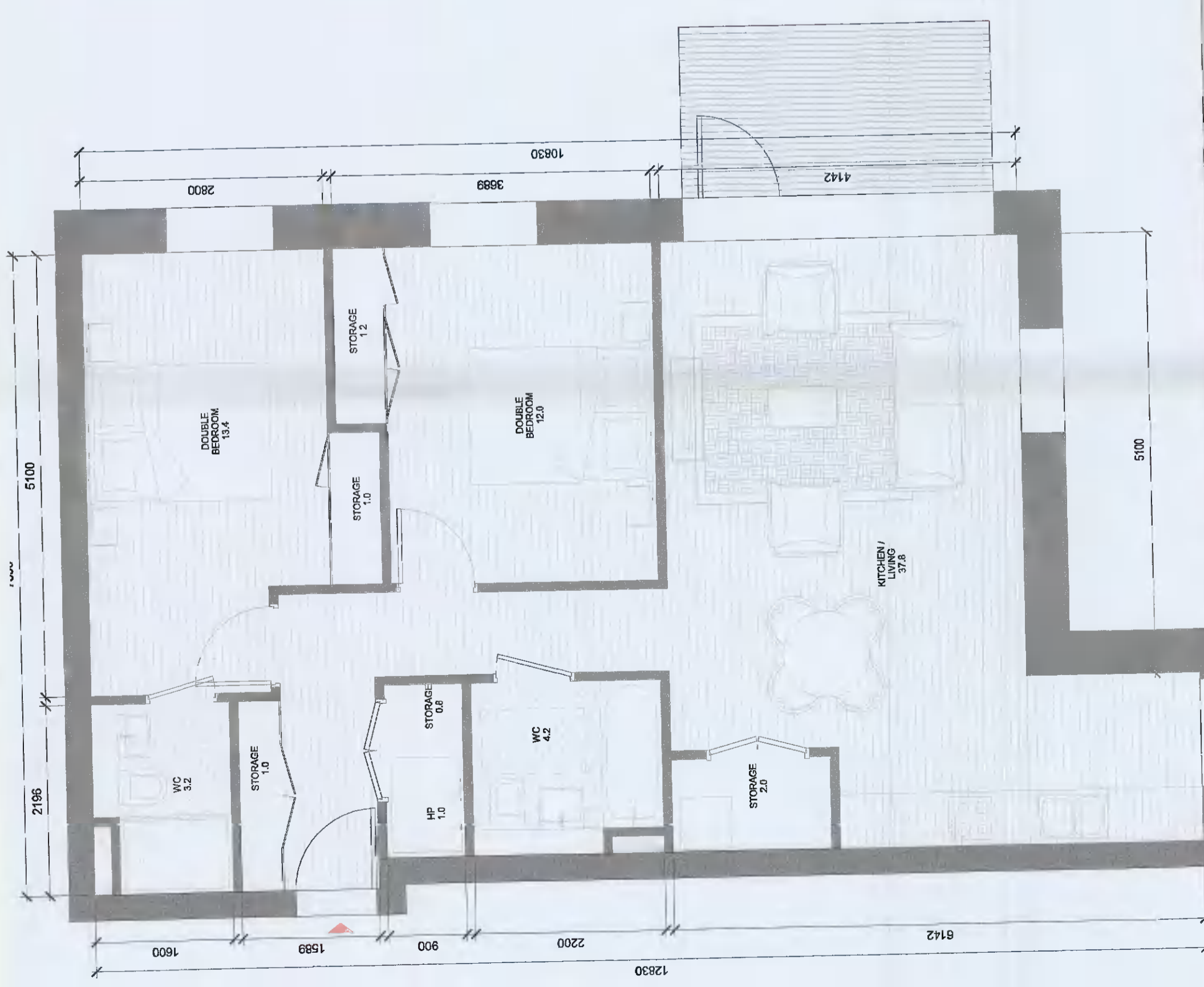
Pink bubble supercedes planning amendment application and relates to RFI Reg Ref: SDZ21A/0020

RFI 1. (c)
Apt G2S-505 is T.210_A - HQA states 25.1 sqm combined bedroom area (compliant) and drawing 8005 states 13.3 sqm for main bedroom and 11.8 sqm for second bedroom

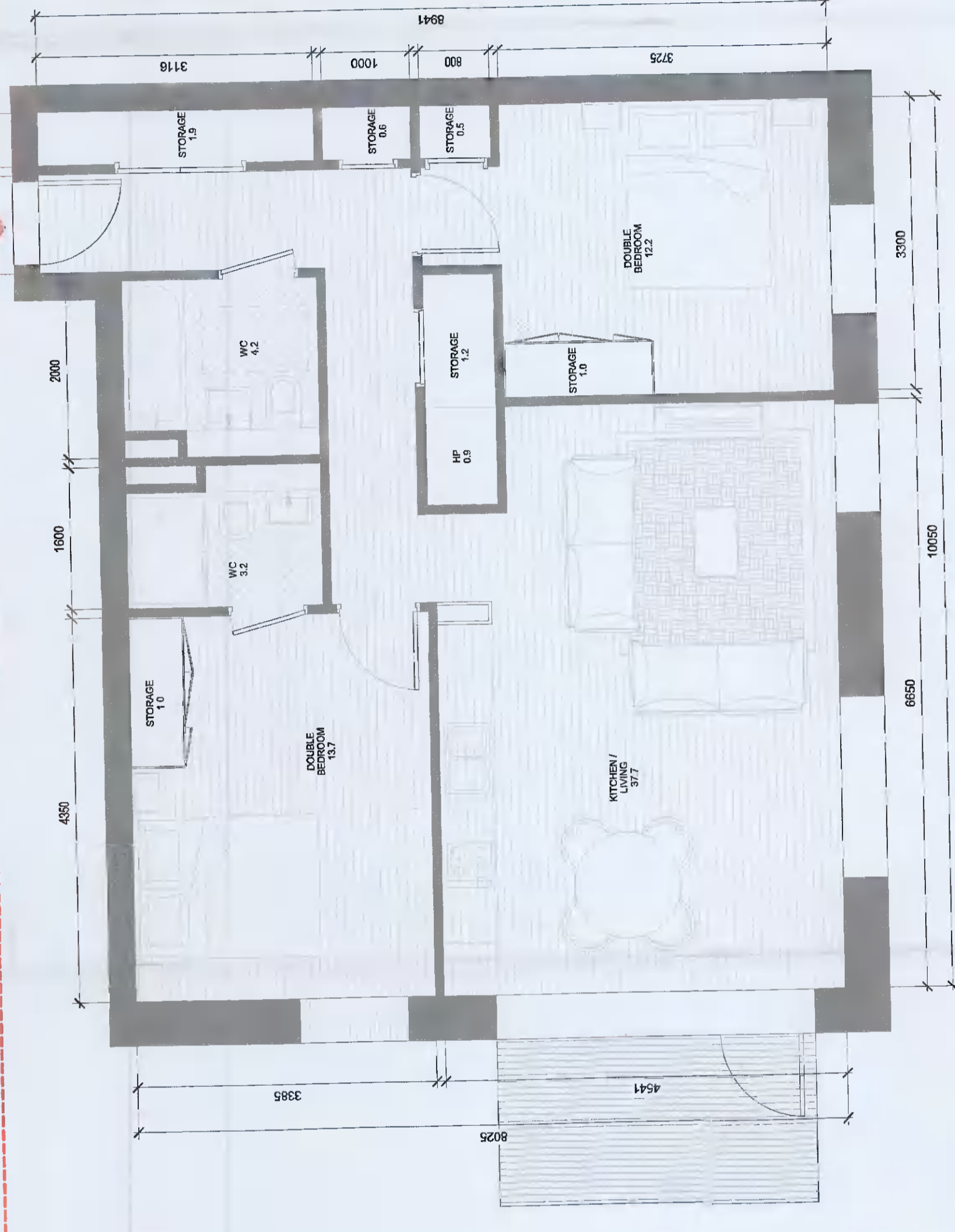
Apt G2S-501 is T.107_A - HQA states 11.6sqm and drawing 8002 states 11.6 sqm

T-209_A SPACE REQUIREMENTS			
Required Area Met	Required Area	Required Area	Required Area
Yes	73.0 m ²	73.0 m ²	73.0 m ²
Yes	33.1 m ²	33.1 m ²	33.1 m ²
Yes	25.1 m ²	25.1 m ²	25.1 m ²
Yes	24.4 m ²	24.4 m ²	24.4 m ²
Yes	6.0 m ²	6.0 m ²	6.0 m ²
Yes	6.0 m ²	6.0 m ²	6.0 m ²
Yes	1.0 m ²	1.0 m ²	1.0 m ²

① T-209_A - PLANNING
1:50



③ T-211_A - PLANNING
1:50



④ T-212_A - PLANNING
1:50

T-210_A SPACE REQUIREMENTS			
Required Area Met	Required Area	Required Area	Required Area
Yes	78.8 m ²	73.0 m ²	73.0 m ²
Yes	33.1 m ²	33.1 m ²	33.1 m ²
Yes	25.1 m ²	25.1 m ²	25.1 m ²
Yes	24.4 m ²	24.4 m ²	24.4 m ²
Yes	6.0 m ²	6.0 m ²	6.0 m ²
Yes	6.0 m ²	6.0 m ²	6.0 m ²
Yes	1.0 m ²	1.0 m ²	1.0 m ²

T-212_A SPACE REQUIREMENTS			
Required Area Met	Required Area	Required Area	Required Area
Yes	78.8 m ²	73.0 m ²	73.0 m ²
Yes	33.1 m ²	33.1 m ²	33.1 m ²
Yes	25.1 m ²	25.1 m ²	25.1 m ²
Yes	24.4 m ²	24.4 m ²	24.4 m ²
Yes	6.0 m ²	6.0 m ²	6.0 m ²
Yes	6.0 m ²	6.0 m ²	6.0 m ²
Yes	1.0 m ²	1.0 m ²	1.0 m ²

REV	DATE	DESCRIPTION	DRN
PM	07/02/2022	ISSUED FOR FURTHER INFORMATION	RL
PO	11/02/2021	ISSUED FOR FURTHER INFORMATION	SH
PO	11/02/2021	ISSUED FOR FURTHER INFORMATION	DB
PO	13/02/2021	ISSUED FOR FURTHER INFORMATION	EA
PO	13/02/2021	ISSUED FOR FURTHER INFORMATION	EA
PO	13/02/2021	ISSUED FOR FURTHER INFORMATION	DRN

ISSUED FOR FURTHER INFORMATION

CLIENT: QUINTAIN IRELAND LTD.
PROJECT: ADMINSTOWN STATION BLOCK G
DRAWING: 2 BED APARTMENT TYPES SHEET 3
PROJECT NUMBER: 950749
DATE: 13/08/21
SCALE: As Indicated
DRAWING NUMBER: ADC-HJL-G-ZZ-DR-A-8005
REVISION: P04