

Area Name

Amenities	Block G2	Plant
Bike Store	Core G1	Waste Store
Block G1	Core G2	



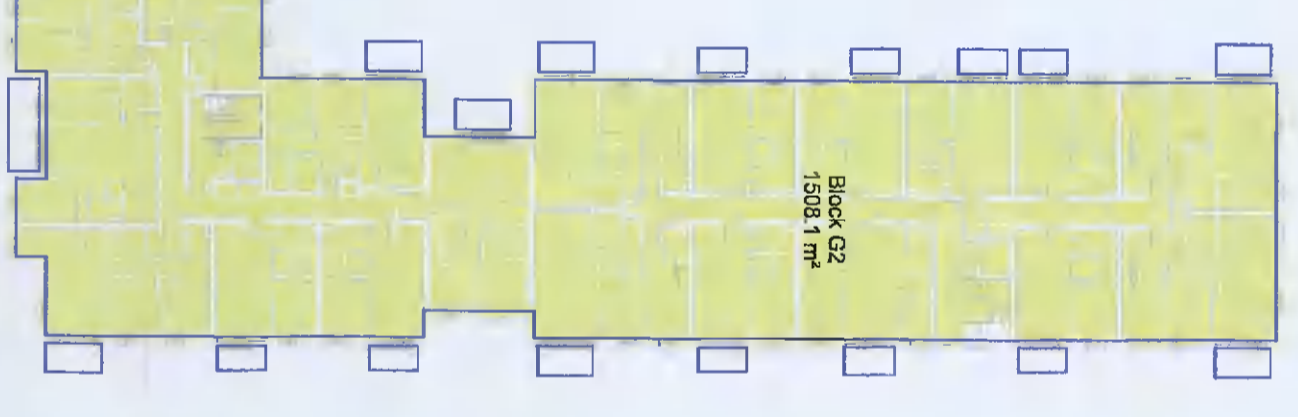
1 LEVEL 00 GIA
1 : 500



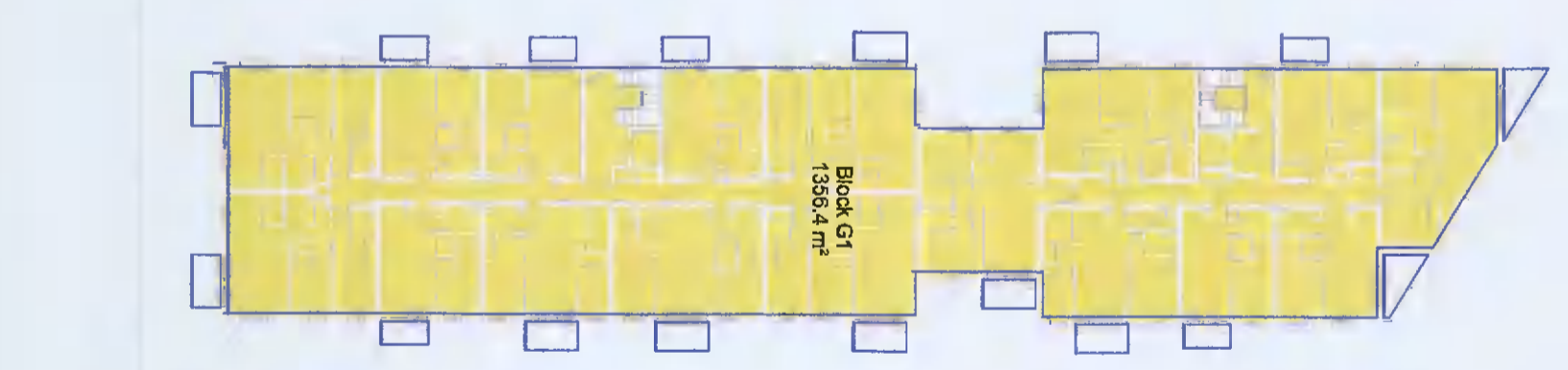
2 LEVEL 01 GIA
1 : 500



3 LEVEL 02 GIA
1 : 500



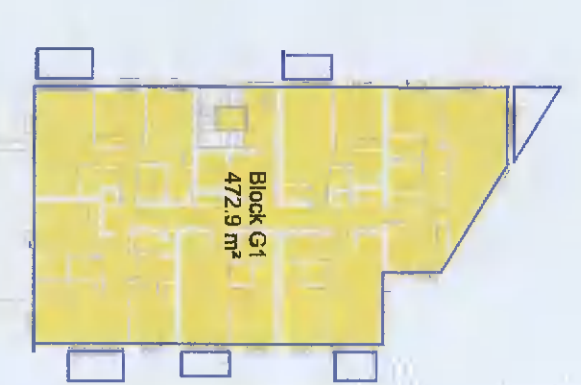
4 LEVEL 03 GIA
1 : 500



5 LEVEL 04 GIA
1 : 500



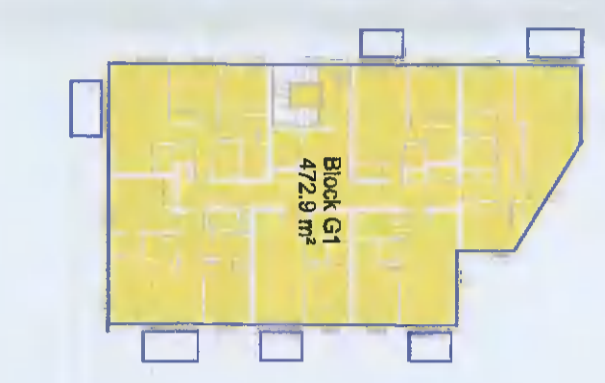
6 LEVEL 05 GIA
1 : 500



7 LEVEL 06 GIA
1 : 500



8 LEVEL 07 GIA
1 : 500



9 LEVEL 08 GIA
1 : 500

AREAS RESIDENTIAL - (Nett) - By Level

Count	Level	Area (GIA)
G1	LEVEL 00G	943.2
10	LEVEL 01G	1583.3
17	LEVEL 02G	1107.2
17	LEVEL 03G	1107.2
9	LEVEL 04G	373.9
9	LEVEL 05G	373.9
8	LEVEL 06G	373.9
8	LEVEL 07G	373.9
5	LEVEL 08G	373.9
99	LEVEL 09G	5859.2

AREAS RESIDENTIAL - (GIA) - By Level

Number	Level	Area
G1	LEVEL 00G	781.0
10	LEVEL 01G	1355.5
17	LEVEL 02G	1156.4
17	LEVEL 03G	1156.4
9	LEVEL 04G	472.9
9	LEVEL 05G	472.9
8	LEVEL 06G	472.9
8	LEVEL 07G	472.9
5	LEVEL 08G	472.9
99	LEVEL 09G	7124.4

Grand total

104	11987.1
-----	---------

Grand total

14659.2

STATUS CODE DESCRIPTION

REV	DATE	DESCRIPTION	CHK	APP
PM	07/02/2022	ISSUED FOR PERMIT NEGOTIATION	RU	LA
PM	11/03/2021	ISSUED FOR PLANNING APPROVAL	RU	SP
PM	12/04/2021	ISSUED FOR PLANNING APPROVAL	RU	LA

CLIENT

QUINTAIN IRELAND LTD.

PROJECT

ADAMSTOWN STATION BLOCK G

SCHEDULE OF AREAS (GIA)

PROJECT NUMBER	DATE
SDZ19	13/04/21

STATUS CODE:

DRAWING NUMBER: ADCH-L-G-ZZ-DR-A-1900

REVISION: P04

Pink bubble supercedes planning amendment application and relates to RFI Reg. Ref: SDZ21A/0020

5. Bicycle Parking

Level	Area	Permitted
00.17	Bike Store	51.6
00.22	Bike Store	51.9
00.23	Bike Store	145.4
00.24	Bike Store	145.4
Grand total		1503.3

4. Plant

Level	Area	Permitted
00.30	Plant	196.1
00.36	Plant	33.6
00.47	Plant	36.6
00.205	Plant	188.6
00.273	Plant	22.7
00.8	Plant	375.8
Grand total		375.8

3. Ancillary

Level	Area	Permitted
00.07	Waste Store	49.8
00.07	Waste Store	36.9
00.212	Waste Store	19.8
00.6	Waste Store	106.6
Grand total		106.6

2. Amenities

Level	Area	Permitted
00.03	Amenities	162.2
00.03	Amenities	52.1
00.03	Amenities	214.3
Grand total		214.3

1. Residential

Level	Area	Permitted
00.01	Block G1	1267.7
00.01	Block G1	384.2
01.01	Block G1	1355.5
02.01	Block G1	1355.0
03.01	Block G1	1356.4
04.01	Block G1	472.9
05.01	Block G1	472.9
06.01	Block G1	472.9
07.01	Block G1	472.9
08.01	Block G1	472.9
Grand total		7703.3