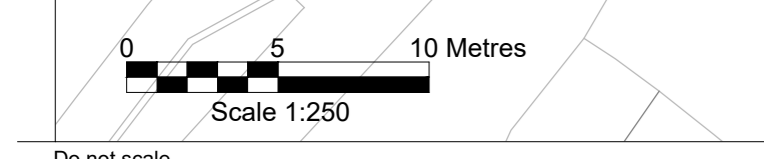
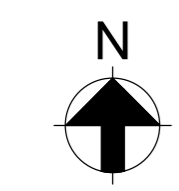
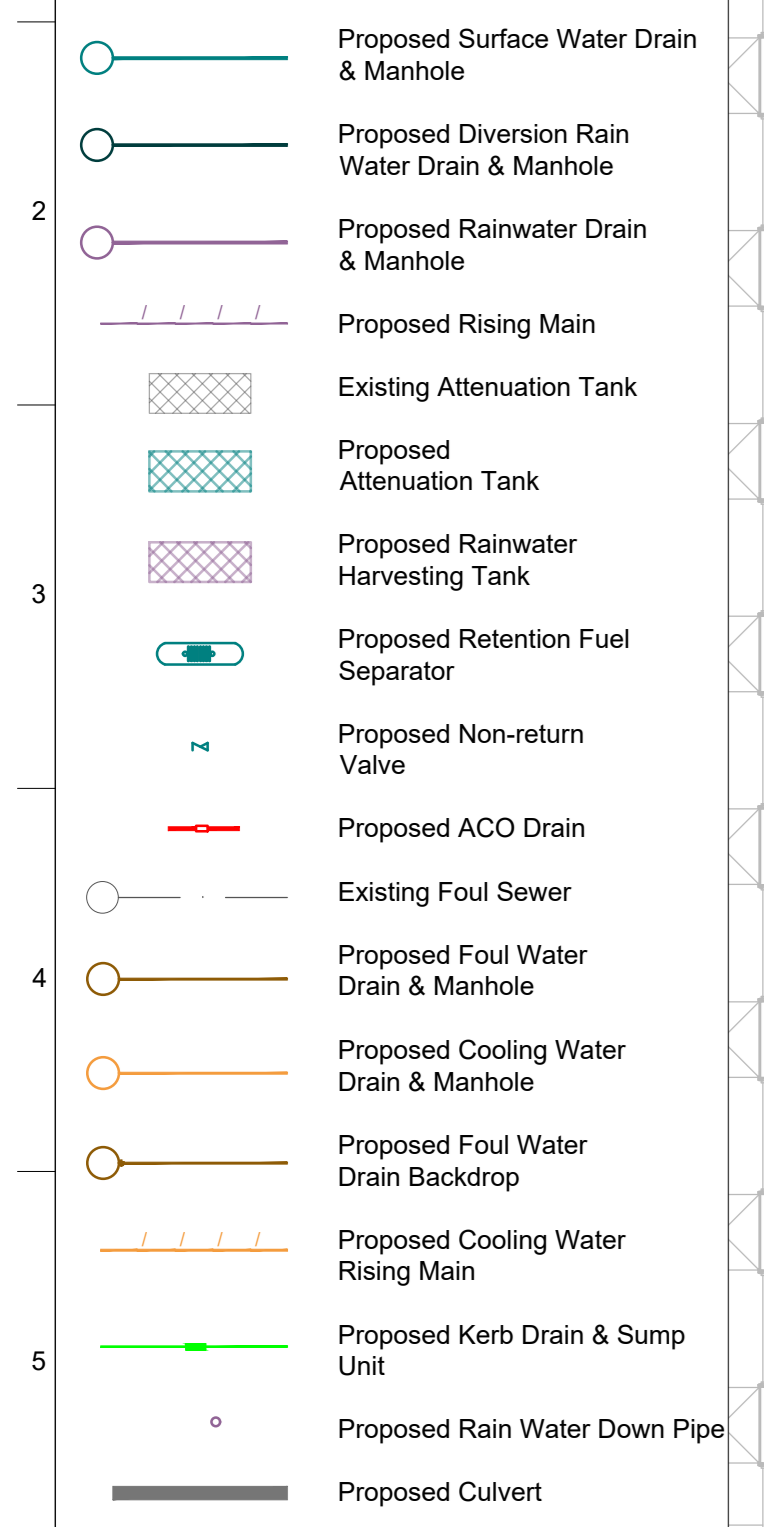
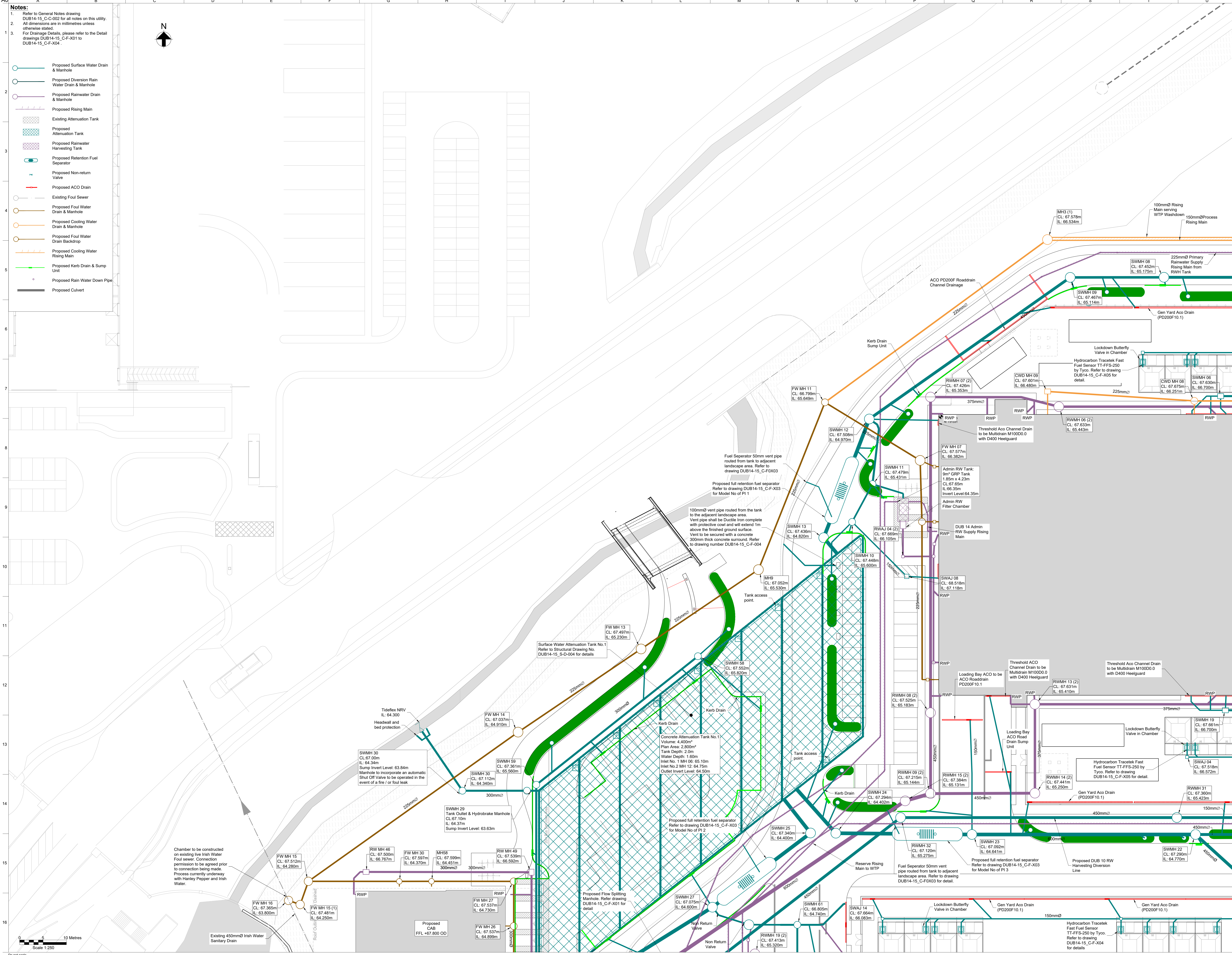


Notes:
 1. Refer to General Notes drawing DUB14-15_C-C-002 for all notes on this utility. All dimensions are in millimetres unless otherwise stated.
 2. For Drainage Details, please refer to the Detail drawings DUB14-15_C-F-X01 to DUB14-15_C-F-X04.



Do not scale



Approvals:

Customer	Microsoft	Date	1/10/2021
Microsoft Mechanical Engineer	Andrew Layer		
Microsoft Electrical Engineer	Cathal O'Sullivan		
Microsoft Telecom Engineer	Alan Kekali		
Engineering Manager	Declan Conerford		
Security Manager	Daniel Jones		
CSA	Laura Maher / Shamendra Naidu / Jeff Schumacher		

- General Notes:**
- This information presented on this drawing relates the design stage as indicated in the revision description.
 - The drawing should be read in conjunction with all relevant and available contract documentation.
 - Some drawings may need to be printed in colour to preserve information indicated in colour on the drawings.
 - All dimensions are in millimeters (mm) unless noted elsewhere. All levels are in metres (m) unless noted elsewhere.
 - Do not scale; work to figured dimensions only.
 - The topographical information provided is based on topographical survey undertaken as part of the planning submission.

P04 24/01/22 Issue for Planning Compliance

Issue	Date	Revision Description

ARUP
 13 Finsbury Street
 London EC2A 3DU
 Tel: +44(0)20 7060 1531 Fax: +44(0)20 7060 7824
 www.arup.com

Client: **Microsoft**

Project File: **DUB14/15**

Key Plan:

Drawing Title: **Proposed Drainage Layout Sheet 2**

Scale of A0: 1:250 By: CHA / Appd DK/AM/Macc

Status: Civil

Revision: S2 - Suitable for Information - Planning

App. Job No: **279225-00** Rev: **P04**

© **DUB14-15_C-D-X02.2**