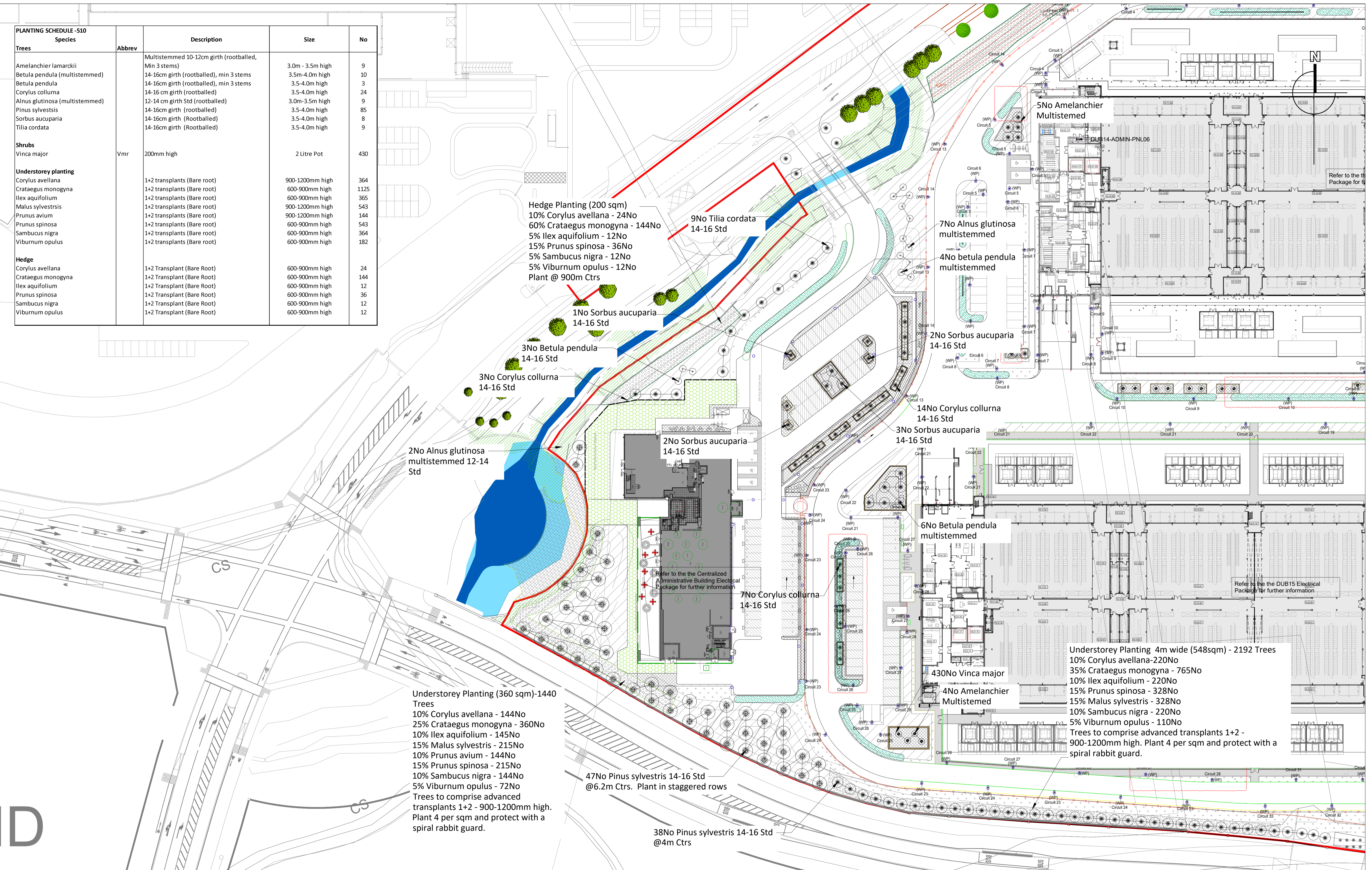


PLANTING SCHEDULE - 510				
Species	Abbrev	Description	Size	No
Trees				
Amelanchier lamarckii		Multistemmed 10-12cm girth (rootballed), Min 3 stems	3.0m - 3.5m high	9
Betula pendula (multistemmed)		14-16cm girth (rootballed), min 3 stems	3.5m-4.0m high	10
Betula pendula		14-16cm girth (rootballed), min 3 stems	3.5-4.0m high	3
Corylus collurna		14-16 cm girth (rootballed)	3.5-4.0m high	24
Alnus glutinosa (multistemmed)		12-14 cm girth Std (rootballed)	3.0m-3.5m high	9
Pinus sylvestris		14-16cm girth (rootballed)	3.5-4.0m high	85
Sorbus aucuparia		14-16cm girth (Rootballed)	3.5-4.0m high	8
Tilia cordata		14-16cm girth (Rootballed)	3.5-4.0m high	9
Shrubs				
Vinca major	Vmr	200mm high	2 Litre Pot	430
Understorey planting				
Corylus avellana		1+2 transplants (Bare root)	900-1200mm high	364
Crataegus monogyna		1+2 transplants (Bare root)	600-900mm high	1125
Ilex aquifolium		1+2 transplants (Bare root)	600-900mm high	365
Malus sylvestris		1+2 transplants (Bare root)	900-1200mm high	543
Prunus avium		1+2 transplants (Bare root)	900-1200mm high	144
Prunus spinosa		1+2 transplants (Bare root)	600-900mm high	543
Sambucus nigra		1+2 transplants (Bare root)	600-900mm high	364
Viburnum opulus		1+2 transplants (Bare root)	600-900mm high	182
Hedge				
Corylus avellana		1+2 Transplant (Bare Root)	600-900mm high	24
Crataegus monogyna		1+2 Transplant (Bare Root)	600-900mm high	144
Ilex aquifolium		1+2 Transplant (Bare Root)	600-900mm high </td <td>12</td>	12
Prunus spinosa		1+2 Transplant (Bare Root)	600-900mm high	36
Sambucus nigra		1+2 Transplant (Bare Root)	600-900mm high	12
Viburnum opulus		1+2 Transplant (Bare Root)	600-900mm high	12



Hedge Planting (200 sqm)
 10% Corylus avellana - 24No
 60% Crataegus monogyna - 144No
 5% Ilex aquifolium - 12No
 15% Prunus spinosa - 36No
 5% Sambucus nigra - 12No
 5% Viburnum opulus - 12No
 Plant @ 900m Ctrs

Understorey Planting (360 sqm)-1440 Trees
 10% Corylus avellana - 144No
 25% Crataegus monogyna - 360No
 10% Ilex aquifolium - 145No
 15% Malus sylvestris - 215No
 10% Prunus avium - 144No
 15% Prunus spinosa - 215No
 10% Sambucus nigra - 144No
 5% Viburnum opulus - 72No
 Trees to comprise advanced transplants 1+2 - 900-1200mm high. Plant 4 per sqm and protect with a spiral rabbit guard.

Understorey Planting 4m wide (548sqm) - 2192 Trees
 10% Corylus avellana-220No
 35% Crataegus monogyna - 765No
 10% Ilex aquifolium - 220No
 15% Prunus spinosa - 328No
 15% Malus sylvestris - 328No
 10% Sambucus nigra - 220No
 5% Viburnum opulus - 110No
 Trees to comprise advanced transplants 1+2 - 900-1200mm high. Plant 4 per sqm and protect with a spiral rabbit guard.

D

Rev	Date	Drawn	Checked	Description
0	28/01/2022	AP	MM	Issued for Compliance

Notes				
Refer to the Centralized Administrative Building Electrical Package for further information				
Refer to the the DUB15 Electrical Package for further information				

Copyright © All Rights Reserved.
 THIS WORK IS COPYRIGHT AND CANNOT BE REPRODUCED OR COPIED IN ANY FORM WITHOUT THE WRITTEN PERMISSION OF THE DESIGNER.
 DO NOT SCALE FROM THIS DRAWING. WORK ONLY FROM FIGURED DIMENSIONS.
 THIS DRAWING IS TO BE READ IN CONJUNCTION WITH RELEVANT CONSULTANT'S DRAWINGS.

Ordnance Survey Ireland Licence No AR 001522
 © Ordnance Survey Ireland/Government of Ireland

Project	MICROSOFT DUB14-DUB15 AND CAB BUILDING	Project No.	6816
Dir.	Planting Plan Sheet 2 of 6	Drawing No.	510
Scale	1:500	Rev.	0
Status	Issued for Compliance	Date	28/01/2022
Mountpleasant Business Centre, Ranelagh, Dublin D06 X7P8 Tel: +353(0)1 2081900	mail@bradyshpmanmartin.com www.bradyshpmanmartin.com	Dir.	AP
		Chd.	Passed

