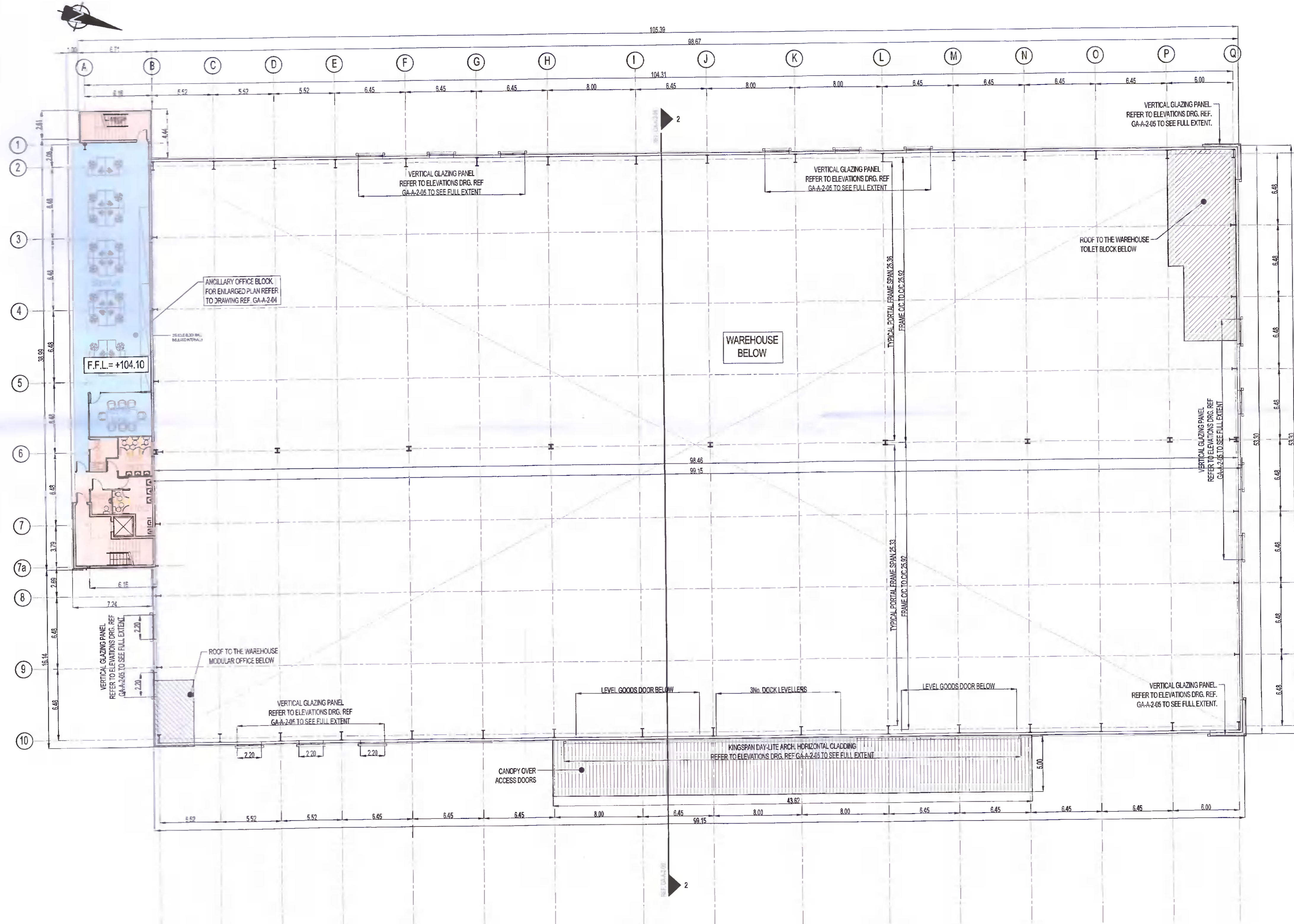


NOTES:

1. THIS DRAWING IS TO BE READ IN CONJUNCTION WITH ALL OTHER RELEVANT DRAWINGS & SPECIFICATIONS.
2. DO NOT SCALE, USE FIGURED DIMENSIONS ONLY.



UNIT 2 - FIRST FLOOR PLAN
SCALE 1:200

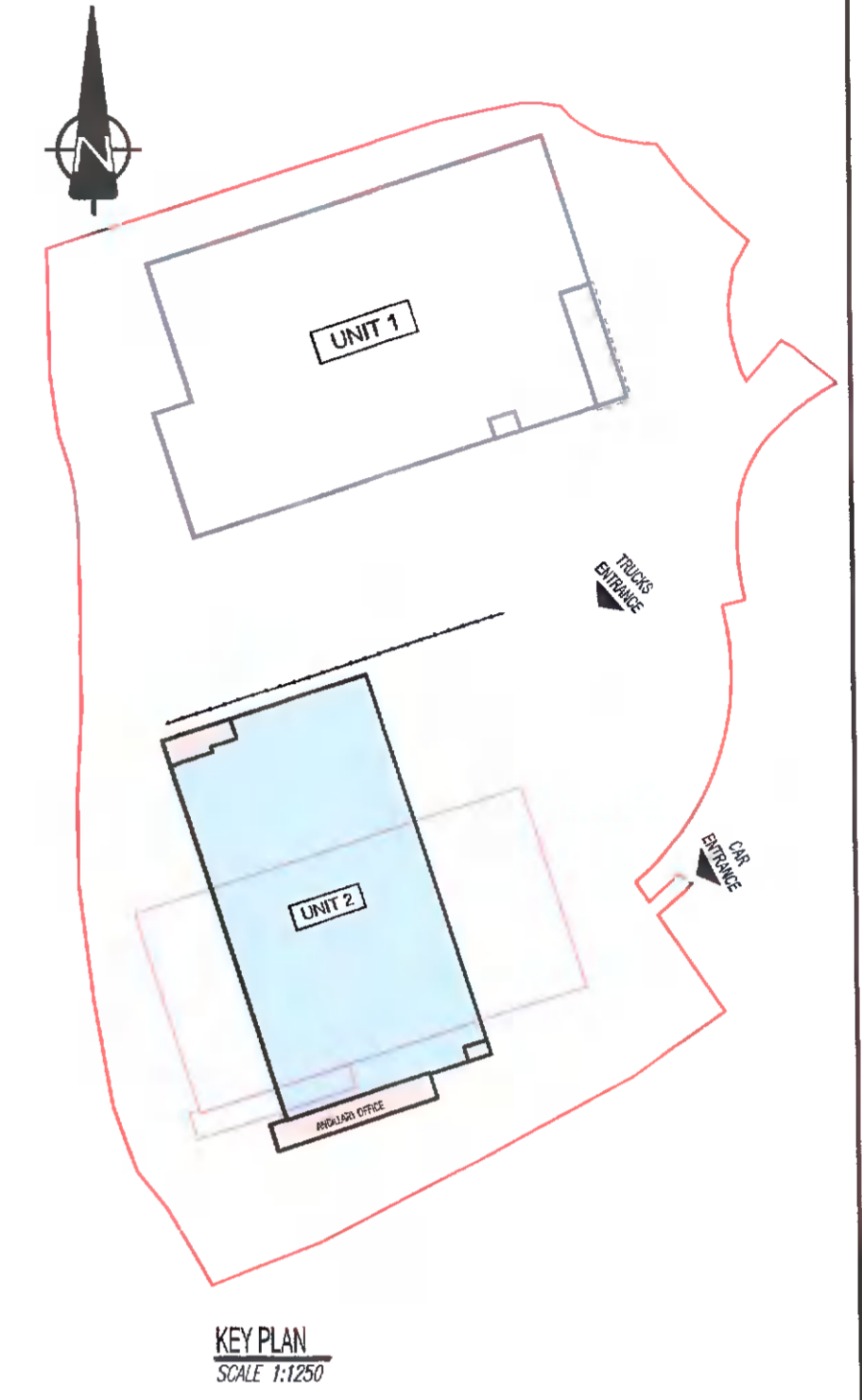


TABLE OF GROSS INTERNAL FLOOR AREAS & USES:

UNIT 2	OFFICE	STAFFI FACILITIES	WAREHOUSE	TOTAL PROP.
GROUND FLOOR	141 1,919sq.ft	224 m2 2,417sq.ft	5,067m2 54,645sq.ft	5,433m2 58,479sq.ft
1ST FLOOR	195 m2 2,099sq.ft	94 m2 1,015sq.ft		289 m2 3,114sq.ft
2ND FLOOR	195 m2 2,099sq.ft	94 m2 1,015sq.ft		289 m2 3,114sq.ft
TOTAL	531m2 5,713sq.ft	413 m2 4,447sq.ft	5,067m2 54,645sq.ft	6,011 m2 64,805sq.ft

PL8	03-02-2021	TK	PK	PK	ISSUED FOR PLANNING ADDITIONAL INFORMATION
PL7	31-05-2021	TK	PK	PK	ISSUED FOR PLANNING
Rev	Date	By	CHK	App.	Revised

Drawing Title: **PLANNING A1**

Job Title: **WAREHOUSE DEVELOPMENT AT BROWNSBARN, CITYWEST CAMPUS, DUBLIN 24**

Drawing Title: **UNIT 2 FIRST FLOOR PLAN**

Architect/Client: **Exeter Ireland Property IV B Limited**

KAVANAGH BURKE CONSULTING ENGINEERS

Tel: 01 - 450 0694 Unit G3, Calmount Pk.
 Fax: 01 - 426 4340 Ballymount,
 Email: pkavanagh@kavanaghburke.ie Dublin 12.

Drn	TK	Checked	PK	Approved	PK
Scales	1:200	Date	FEBRUARY 2021		
Mo No.	D1678	Design No.	GA-A-2-02	Rev.	PL8