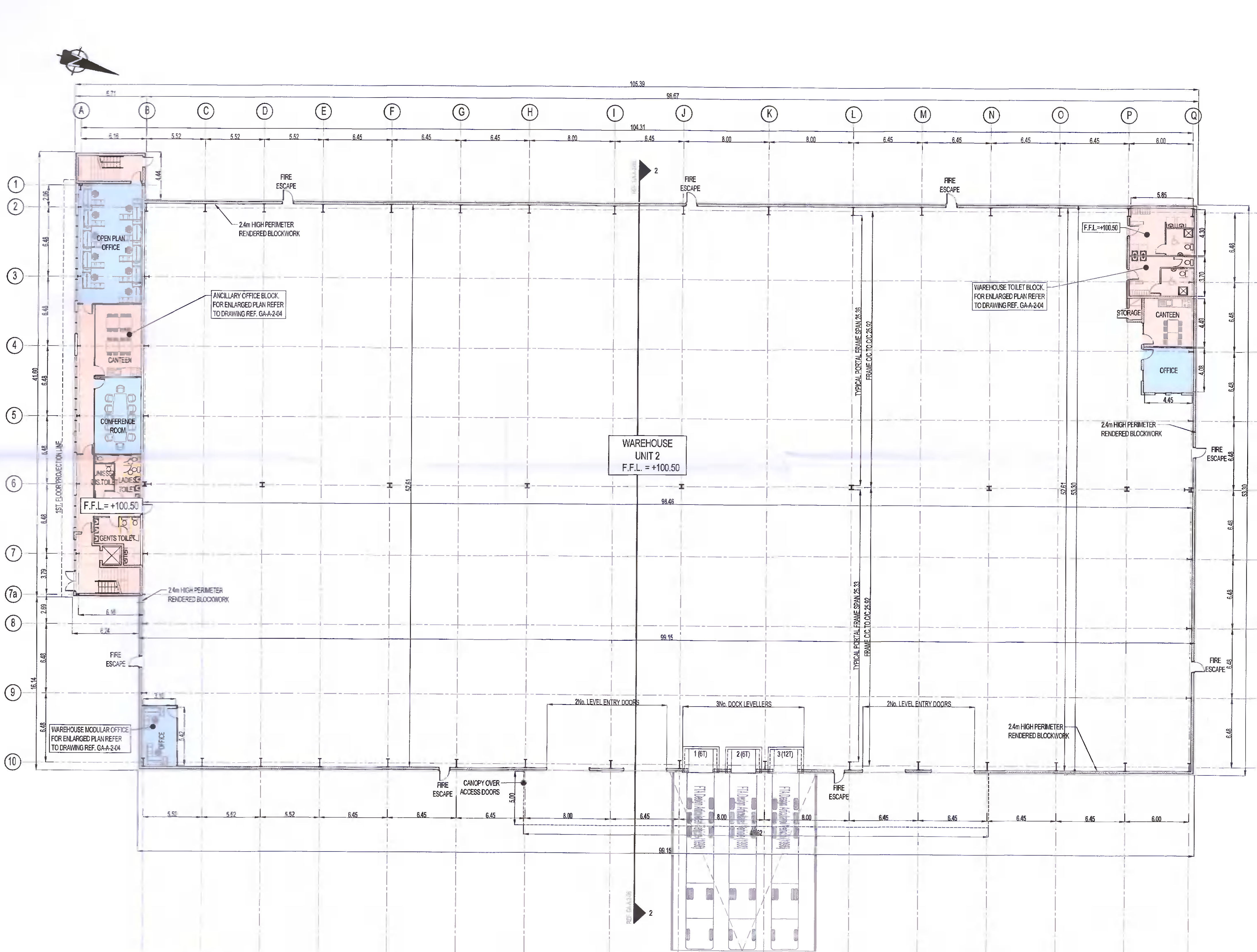
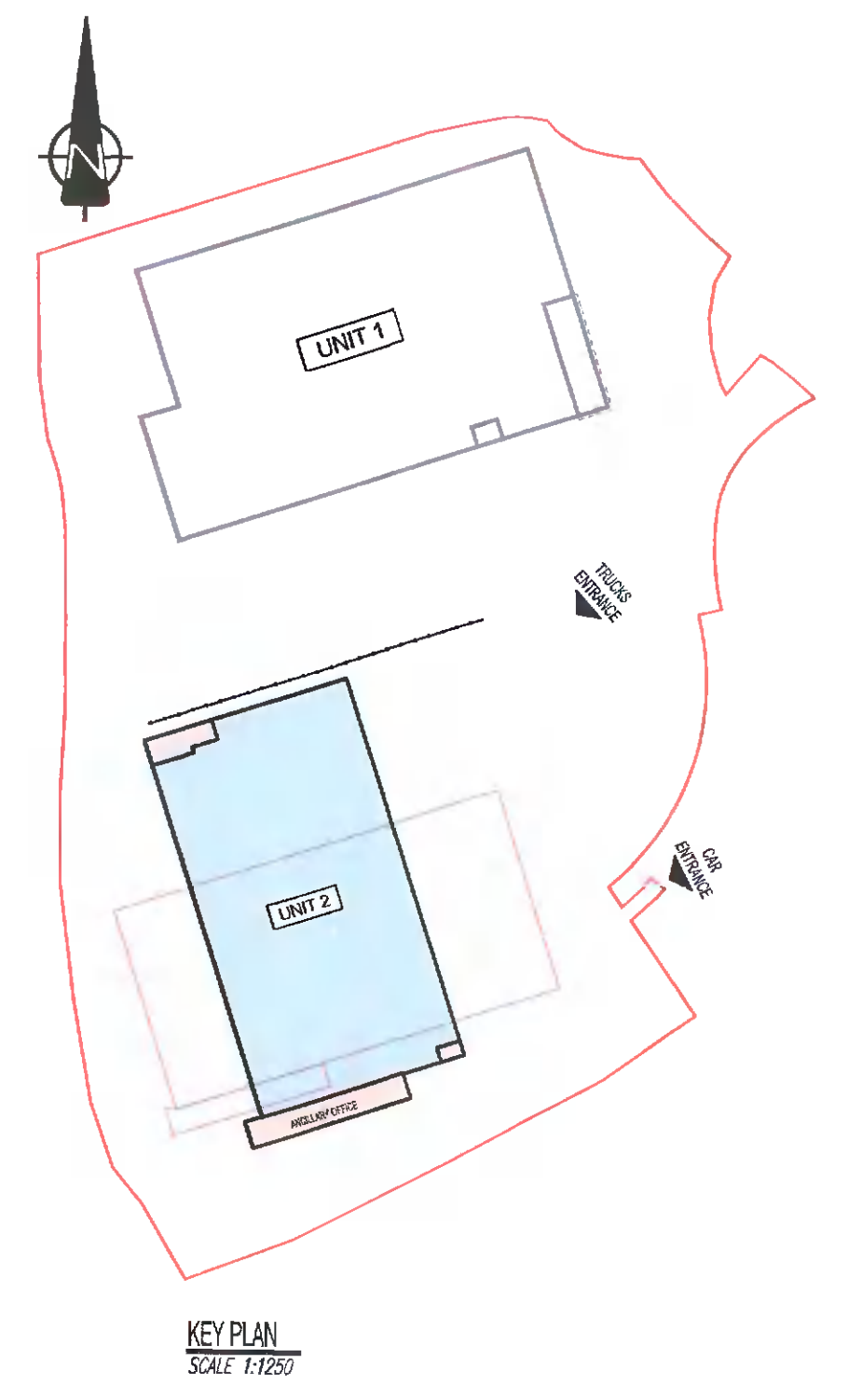


NOTES:
 1. THIS DRAWING IS TO BE READ IN CONJUNCTION WITH ALL OTHER RELEVANT DRAWINGS & SPECIFICATIONS.
 2. DO NOT SCALE. USE FIGURED DIMENSIONS ONLY.



UNIT 2 - GROUND FLOOR PLAN
 SCALE 1:200



KEY PLAN
 SCALE 1:1250

TABLE OF GROSS INTERNAL FLOOR AREAS & USES:

	UNIT 2	OFFICE	STAFF FACILITIES	WAREHOUSE	TOTAL PROP.
GROUND FLOOR	141	2519sq.ft	224m ²	5,057m ²	5,433m ²
1ST FLOOR	195m ²	2,699sq.ft	94m ²		2,988m ²
2ND FLOOR	195m ²	2,699sq.ft	94m ²		2,988m ²
TOTAL	531m ²	5,787sq.ft	413m ²	5,057m ²	6,011m ²

PL8	03-10-2022	TK	PK	PK	ISSUED FOR PLANNING ADDITIONAL INFORMATION
PL7	31-05-2021	TK	PK	PK	ISSUED FOR PLANNING
Mat	Date	By	CHK	Appr.	Reason
Drawing Title					
PLANNING A1					
Job Title					
WAREHOUSE DEVELOPMENT AT BROWNSBARN, CITYWEST CAMPUS, DUBLIN 24					
Drawing File					
UNIT 2 GROUND FLOOR PLAN					
Project/Client					
Exeter Ireland Property IV B Limited					
KAVANAGH BURKE CONSULTING ENGINEERS					
Tel. 01 - 450 0694		Unit G3, Calmount Pk.			
Fax. 01 - 428 4340		Ballymount, Dublin 12.			
Email: pkavanagh@kavanaghburke.ie					
CHK	TK	Checked	PK	Approved	PK
Scale	1:200	DATE	FEBRUARY 2021		
Job No.	D1678	Drawing No.	GA-A-2-01	Rev.	PL8