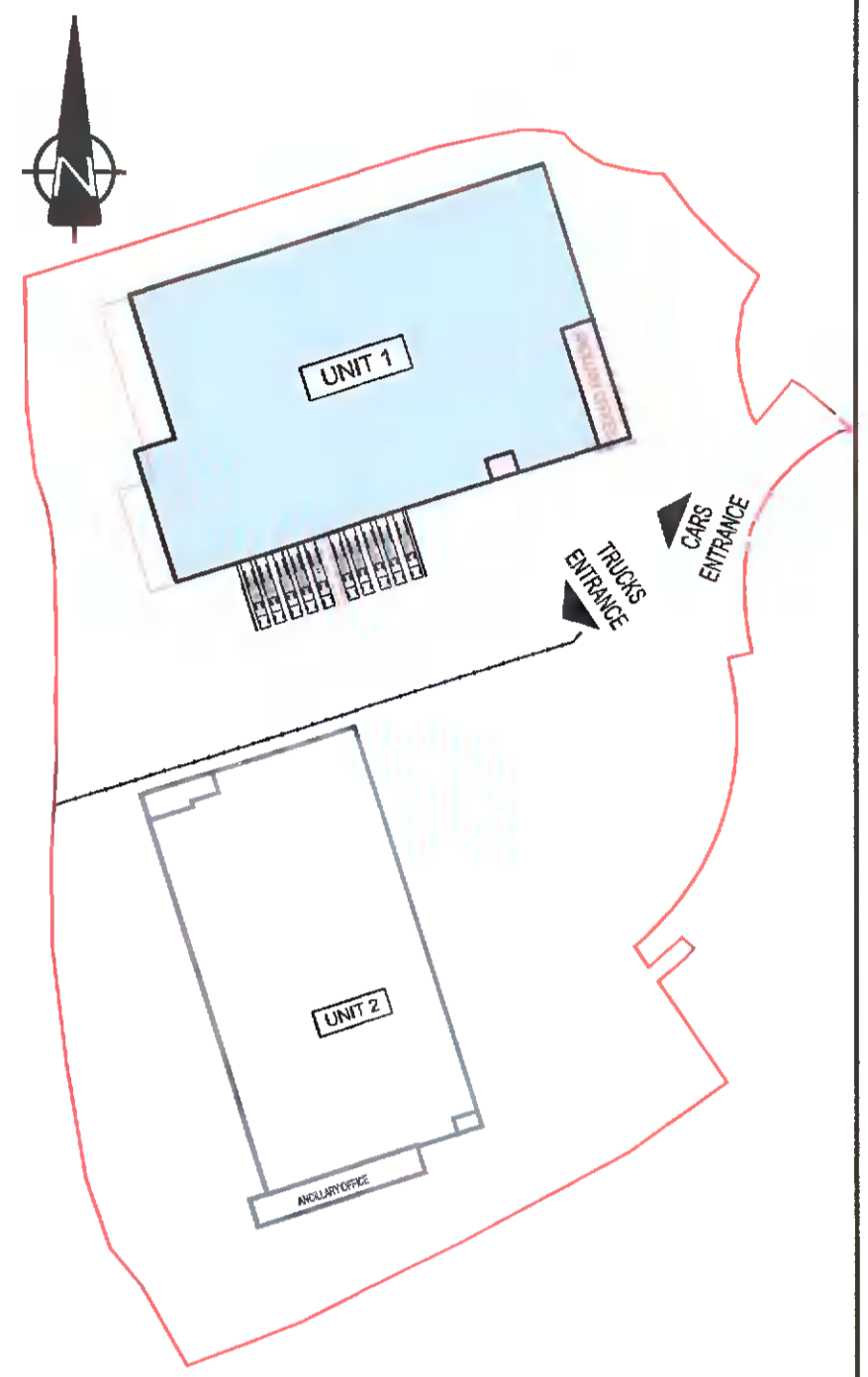


NOTES:

1. THIS DRAWING IS TO BE READ IN CONJUNCTION WITH ALL OTHER RELEVANT DRAWINGS & SPECIFICATIONS.
2. DO NOT SCALE. USE FIGURED DIMENSIONS ONLY.



KEY PLAN
SCALE 1:1750

TABLE OF GROSS INTERNAL FLOOR AREAS & USES:

	UNIT 1	OFFICE	STAFF FACILITIES	WAREHOUSE	TOTAL PROP.
GROUND FLOOR			245 m ² 2685 Sq.ft	6,883 m ² 73,841 Sq.ft	7,228 m ² 77,944 Sq.ft
1ST FLOOR	181 m ² 1,948 Sq.ft	74 m ² 795 Sq.ft			255 m ² 2,743 Sq.ft
2ND FLOOR	181 m ² 1,948 Sq.ft	74 m ² 795 Sq.ft			255 m ² 2,743 Sq.ft
TOTAL	362 m² 3,896 Sq.ft	337 m² 3,613 Sq.ft	6,883 m² 73,841 Sq.ft		7,742 m² 83,932 Sq.ft

PL3	24-01-2022	TK	PK	PK	ISSUED FOR PLANNING ADDITIONAL INFORMATION
PL2	03-03-2021	SCB	SB	PK	ISSUED FOR PLANNING
Rev	Date	By	Chk	App	Revised

Drawing Code: **PLANNING AI**

Job Title:
WAREHOUSE DEVELOPMENT AT BROWNSBARN, CITYWEST CAMPUS, DUBLIN 24

Drawing Title:
UNIT 1 SECOND FLOOR PLAN

Architect:
Exeter Ireland Property IV B Limited

KAVANAGH BURKE
CONSULTING ENGINEERS

Tel: 01 - 450 0694 Unit G3, Calmount Pk.
Fax: 01 - 426 4340 Ballymount,
Email: pkavanagh@kavanaghburke.ie Dublin 12.

En	TK	Checked	PK	Approved	PK
Scale:	1:200 @A1	Date:	JANUARY 2022		
Job No:	D1678	Drawing No.:	GA-A-1-03	Rev.:	PL3

UNIT 1 - SECOND FLOOR PLAN
SCALE 1:200