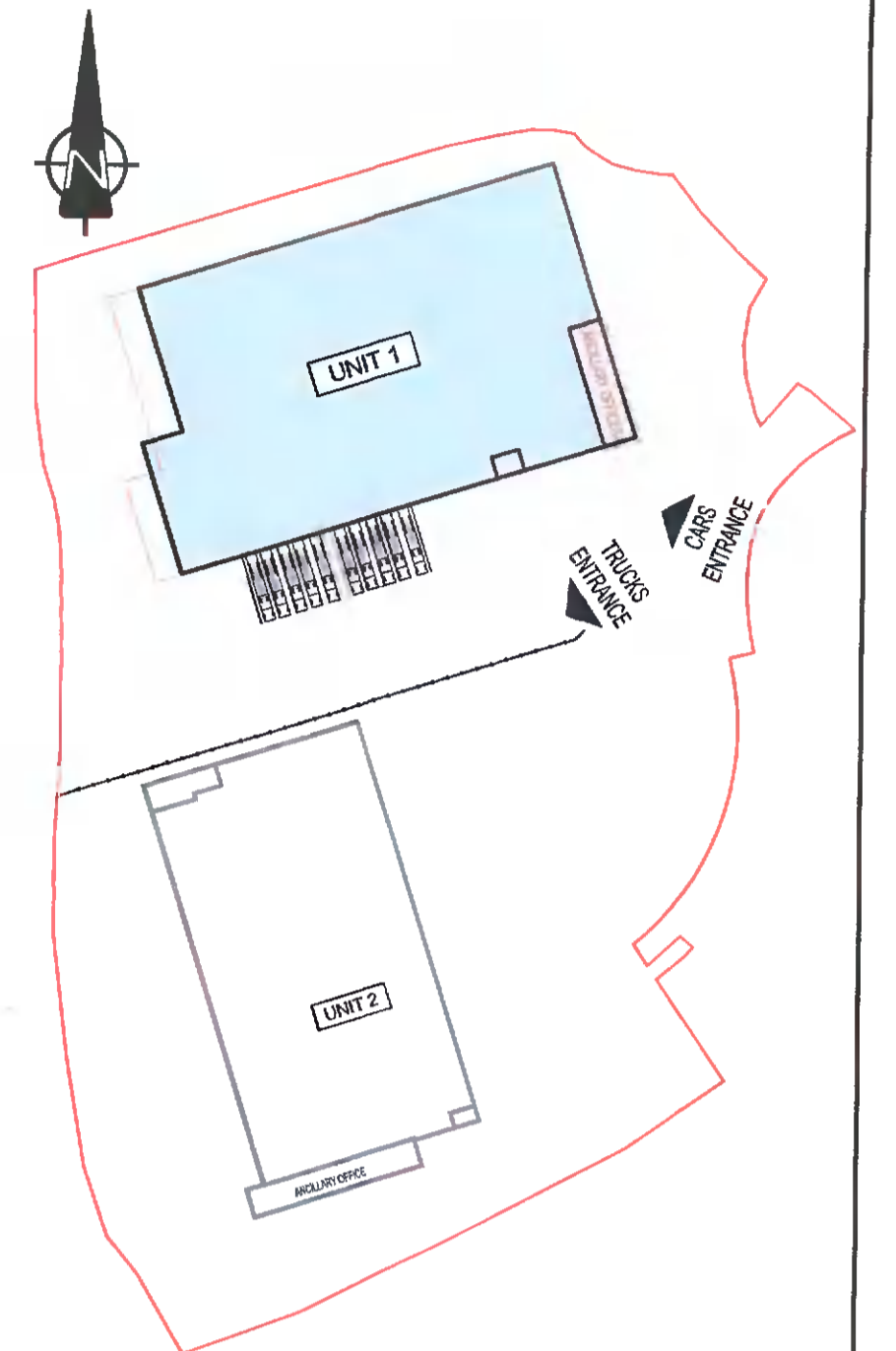


NOTES:

- THIS DRAWING IS TO BE READ IN CONJUNCTION WITH ALL OTHER RELEVANT DRAWINGS & SPECIFICATIONS.
- DO NOT SCALE, USE FIGURED DIMENSIONS ONLY.



KEY PLAN
SCALE 1:1750

TABLE OF GROSS INTERNAL FLOOR AREAS & USES:

	UNIT 1	OFFICE	STAFF FACILITIES	WAREHOUSE	TOTAL PROP.
GROUND FLOOR		249 m ² 2,680 Sq.ft	6,983 m ² 75,044 Sq.ft		7,232 m ² 77,644 Sq.ft
1ST FLOOR	181 m ² 1,945 Sq.ft	74 m ² 795 Sq.ft			255 m ² 2,740 Sq.ft
2ND FLOOR	181 m ² 1,945 Sq.ft	74 m ² 795 Sq.ft			255 m ² 2,740 Sq.ft
TOTAL	362 m ² 3,890 Sq.ft	367 m ² 3,972 Sq.ft	6,983 m ² 75,044 Sq.ft		7,742 m ² 83,906 Sq.ft

PL3 (24-01-2022)	TK	PK	FK	ISSUED FOR PLANNING ADDITIONAL INFORMATION	
PL2 (13-03-2022)	SCB	SB	PK	ISSUED FOR PLANNING	
Rev	Date	By	CHK	App.	Rev

PLANNING AI

Job Title
WAREHOUSE DEVELOPMENT AT BROWNSBARN, CITYWEST CAMPUS, DUBLIN 24

Drawing Title
UNIT 1 FIRST FLOOR PLAN

Prepared by
Exeter Ireland Property IV B Limited

KAVANAGH BURKE
CONSULTING ENGINEERS

Tel. 01 - 450 0864 Unit G3, Calmount Pk.
Fax. 01 - 426 4340 Ballymount,
Email: pkavanagh@kavanaghburke.ie Dublin 12.

DR	TK	Checked	PK	Approved	PK
Scale	1:200 @A1	Date	JANUARY 2022		
Job No.	D1678	Drawing No.	GA-A-1-02	Rev.	PL3

UNIT 1 - FIRST FLOOR PLAN
SCALE 1:200