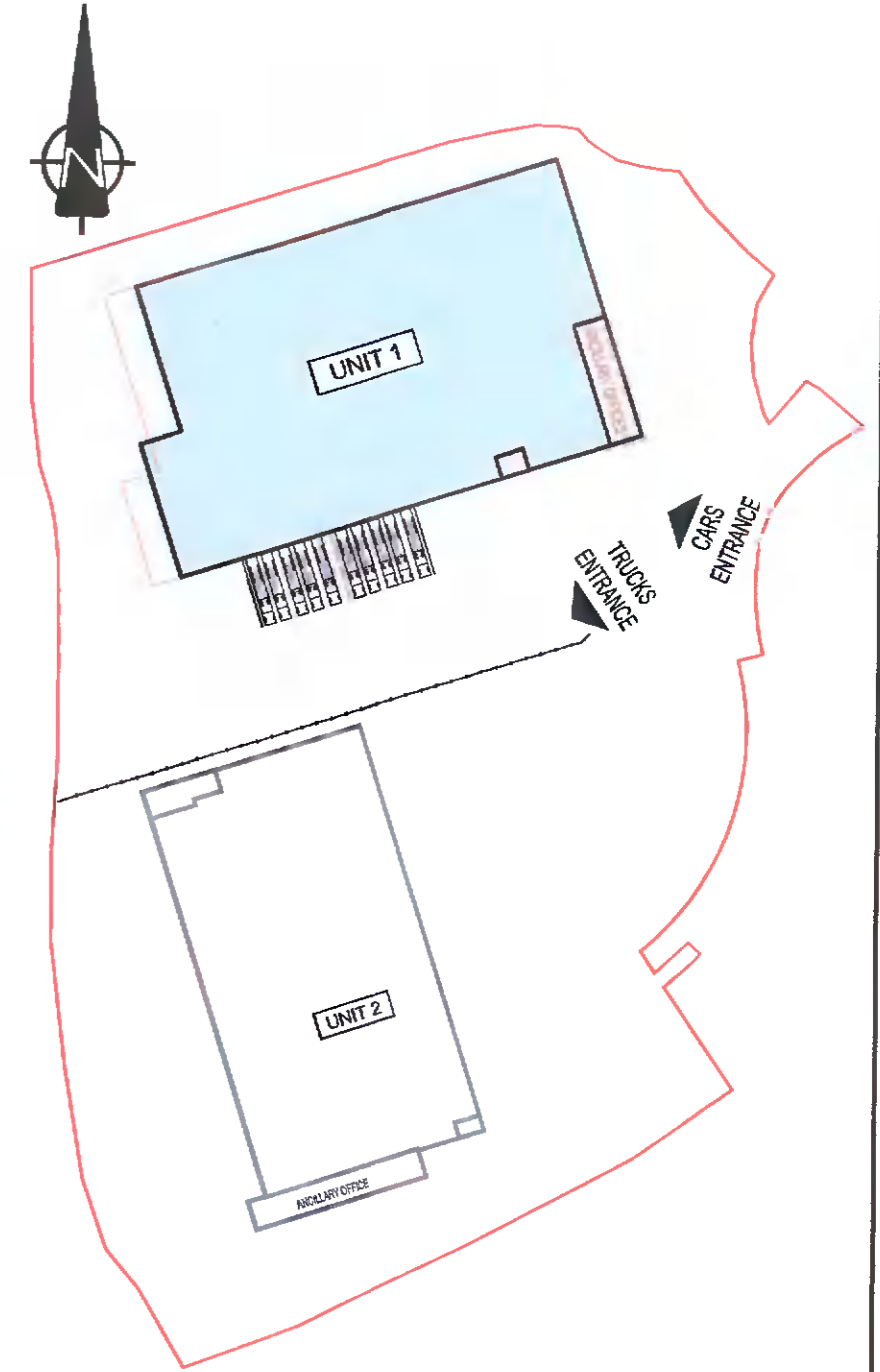


NOTES:

- THIS DRAWING IS TO BE READ IN CONJUNCTION WITH ALL OTHER RELEVANT DRAWINGS & SPECIFICATIONS.
- DO NOT SCALE, USE FIGURED DIMENSIONS ONLY.



KEY PLAN
SCALE 1:1750

TABLE OF GROSS INTERNAL FLOOR AREAS & USES:

	UNIT 1	OFFICE	STAFF FACILITIES	WAREHOUSE	TOTAL PROP.
GROUND FLOOR		2415 m ² 2611 Sq.ft	74 m ² 795 Sq.ft	6363 m ² 6864 Sq.ft	7232 m ² 7784 Sq.ft
1ST FLOOR		181 m ² 1955 Sq.ft	74 m ² 795 Sq.ft		255 m ² 2745 Sq.ft
2ND FLOOR		181 m ² 1955 Sq.ft	74 m ² 795 Sq.ft		255 m ² 2745 Sq.ft
TOTAL	362 m ² 3899 Sq.ft	397 m ² 4271 Sq.ft	6,883 m ² 7394 Sq.ft	7,742 m ² 8353 Sq.ft	

PL1	24-01-2021	TK	PK	FK	ISSUED FOR PLANNING ADDITIONAL INFORMATION
PL2	03-03-2021	SCB	SB	FK	ISSUED FOR PLANNING
Rev	Chg	By	CHK	Appr.	Position

PLANNING AI

Job Title:
WAREHOUSE DEVELOPMENT AT BROWNSBARN, CITYWEST CAMPUS, DUBLIN 24

Drawn By:
UNIT 1 GROUND FLOOR PLAN

Client:
Exeter Ireland Property IV B Limited

KAVANAGH BURKE CONSULTING ENGINEERS

Tel: 01 - 450 0604 Unit G3, Calmount Pk.
 Fax: 01 - 428 4340 Ballymount,
 Email: pkavanagh@kavanaghburke.ie Dublin 12.

Dr: TK	Checked: PK	Approved: FK
Scale: 1:200	Date: JANUARY 2022	
Job No: D1678	Contract: GA-A-1-01	Rev: PL3

UNIT 1 - GROUND FLOOR PLAN
SCALE 1:200