

WAREHOUSE - SECTION A-A
Scale 1:150

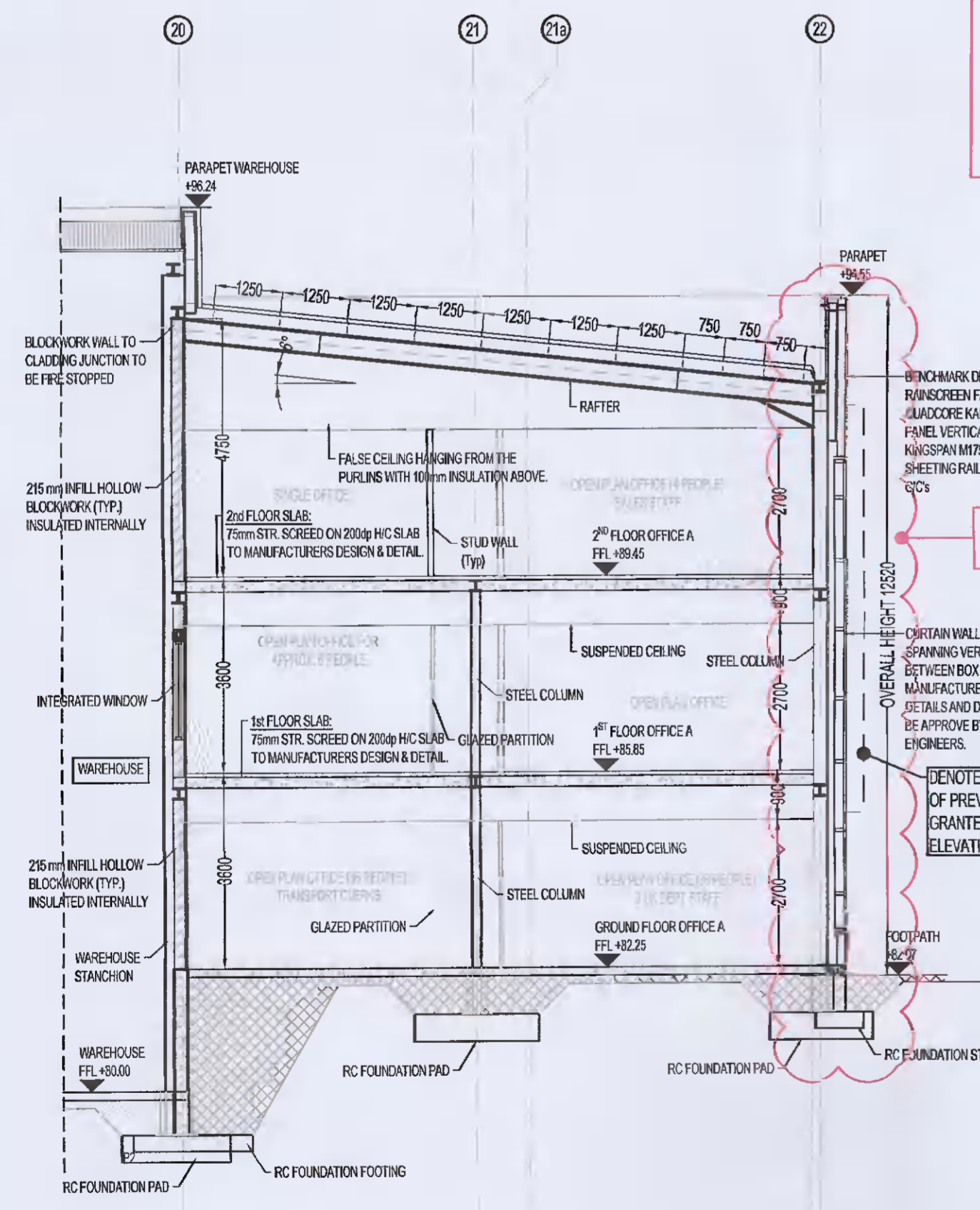
1 - ALTERATION NUMBER FOR THE SUBJECT APP.

THE SUBJECT ALTERATIONS ARE AS FOLLOWS:

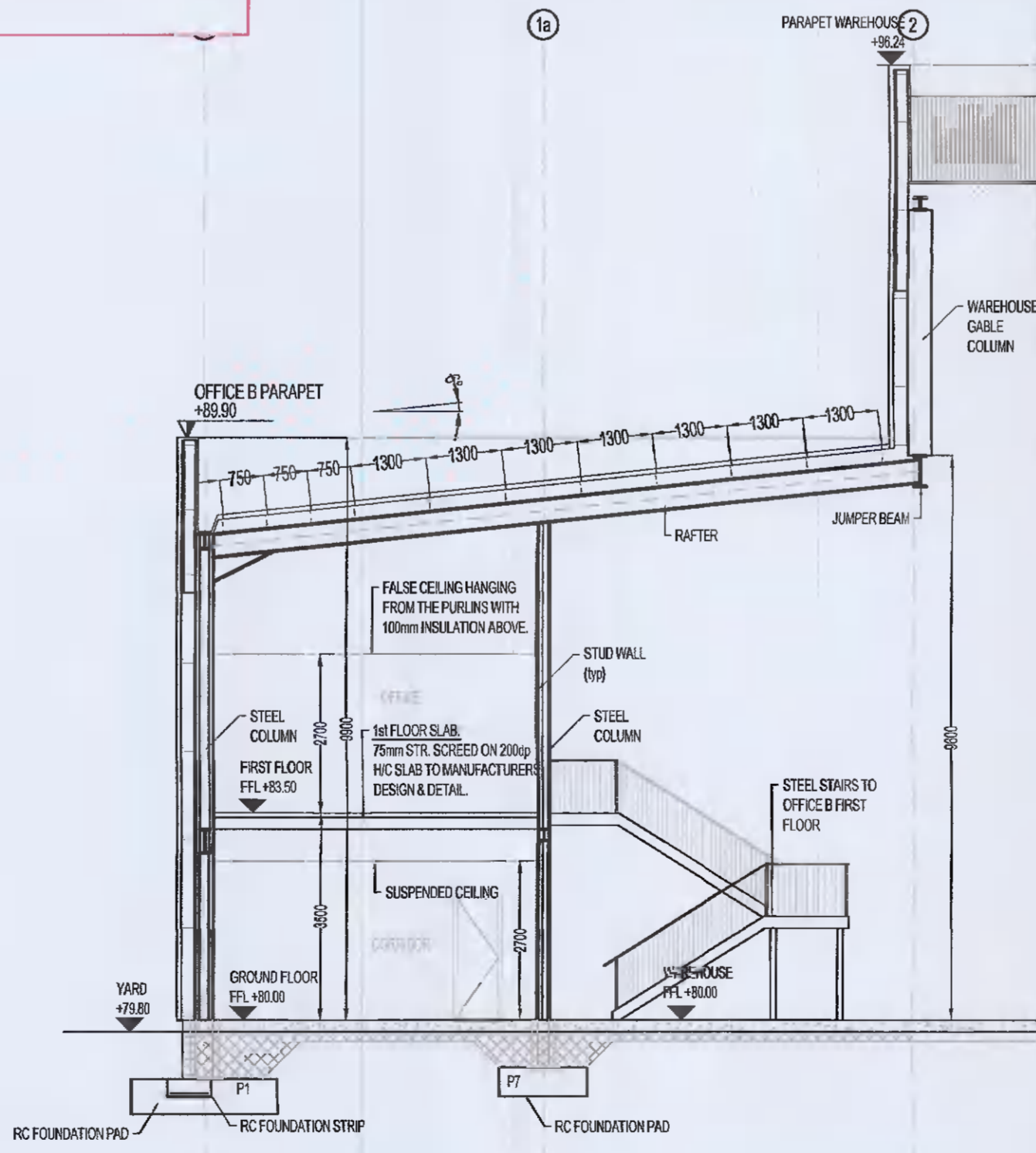
ELEVATION ALTERATIONS ONLY TO THE FRONT 3 STOREY ANCILLARY OFFICE BLOCK A:

THE ALTERATIONS COMPRISE A CHANGE OF MATERIAL CLADDING AND FENESTRATION REVISIONS TO THE FRONT AND IMMEDIATE SIDE ELEVATIONS OF THE ANCILLARY OFFICES (SOUTH, EAST AND WEST ELEVATIONS). THE PREVIOUSLY APPROVED CLADDING "CERAMIC GRANITE" STONE FINISH IS PROPOSED TO BE REVISED TO "BENCHMARK DR-DESIGN RAINSCREEN FACADE" PROFILED METAL CLADDING SYSTEM.

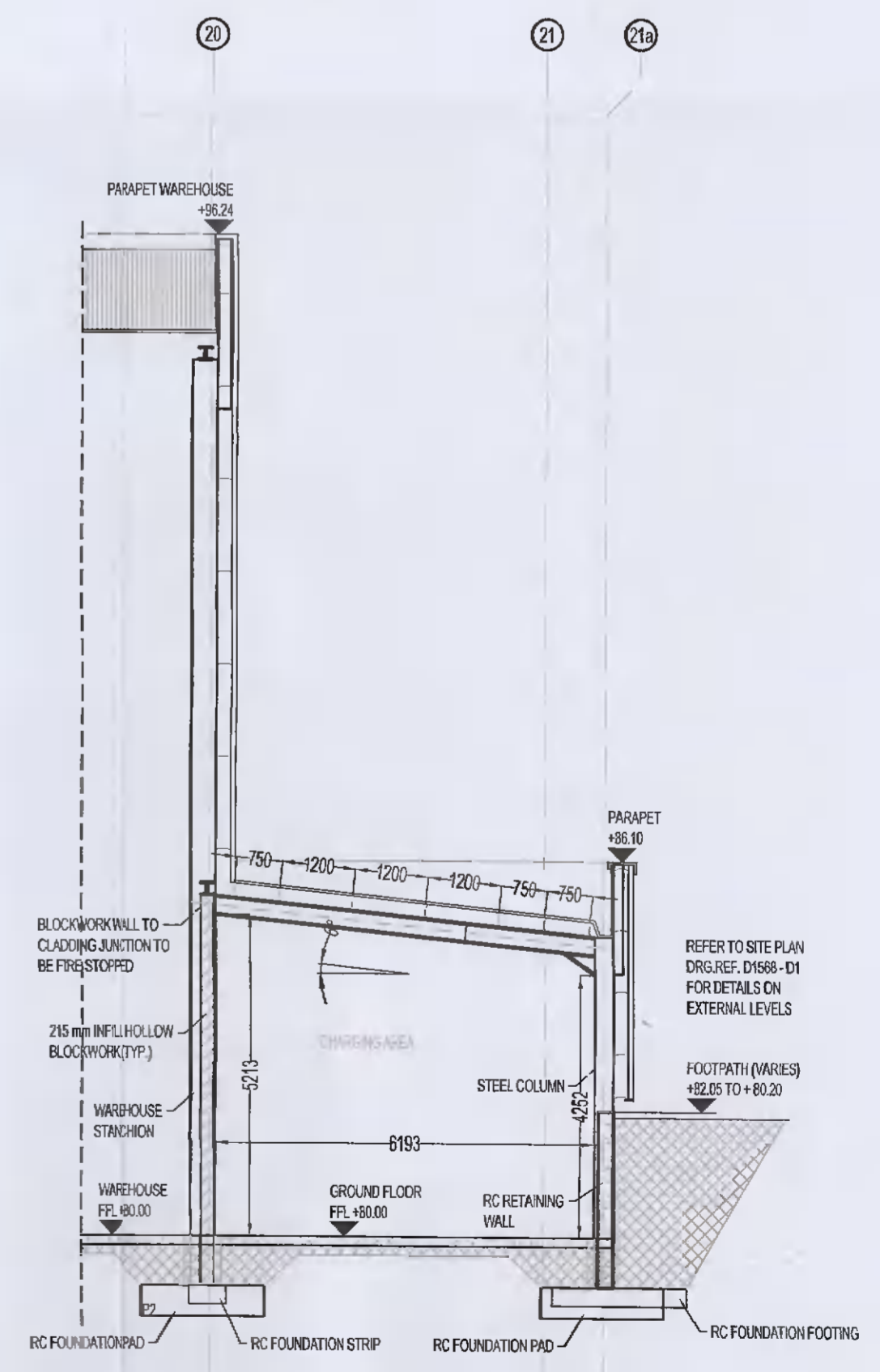
ALL OTHER DETAILS REMAIN AS PER THE AFOREMENTIONED GRANTED PLANNING APPLICATIONS.



OFFICE BLOCK A - SECTION B-B
SC 1:100



OFFICE BLOCK B - SECTION C-C
SC 1:100



CHARGING AREA - SECTION D-D
SC 1:100

PL4	16/10/20	ED	LB	ISSUED FOR PLANNING ALTERATIONS
Mark	Date	By	Chk.	App.
				Revision

Job Title:
PROPOSED DEVELOPMENT AT KINGSWOOD BUSINESS PARK, BALDONNEL, DUBLIN 22

Client:
JMC VAN TRANS LTD

Section Title:
**SECTION A-A, B-B, C-C & D-D
AS PER GRANTED PERMISSION
REG. REF. SD20A/0187**

Drawing Title:
PLANNING (ALTERATIONS 2020)

Drawn: ED
Checked: LB
Approved: LB
Scales: AS SHOWN
Date: November 2019

Job No.: D1568
Drawing No.: GA04
Rev.: PL4

KAVANAGH BURKE
CONSULTING ENGINEERS

Tel: 01 - 450 6894
Fax: 01 - 426 4340
Email: pkavanagh@kavanaghburke.ie

Unit G3, Calmount Pk.
Ballymount,
Dublin 12.