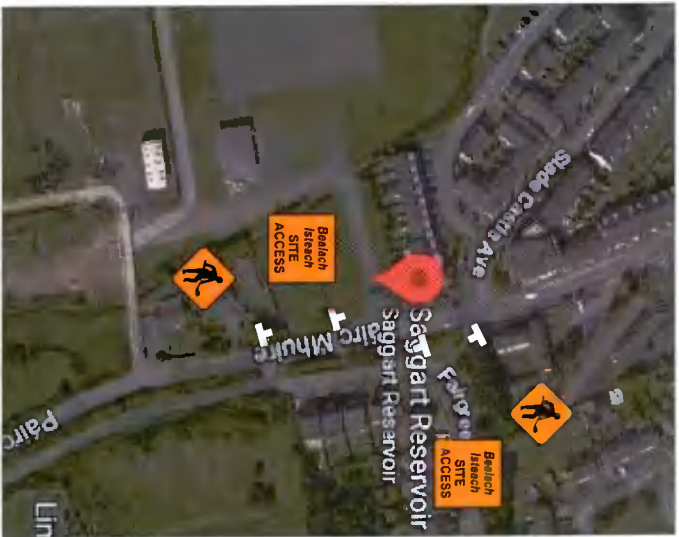
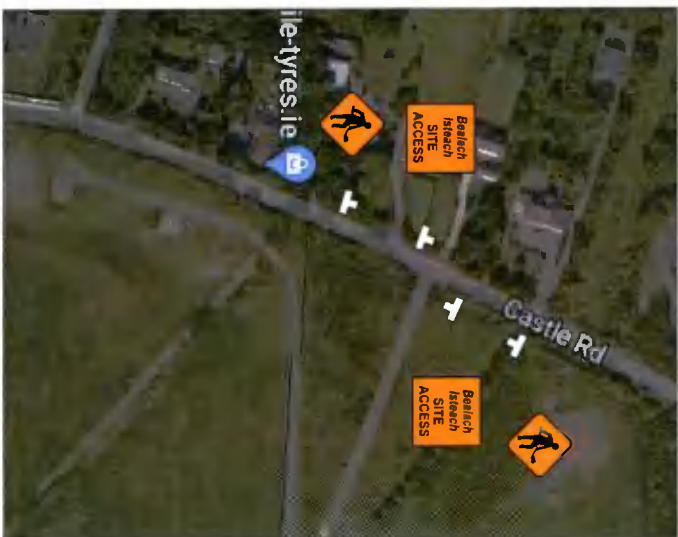


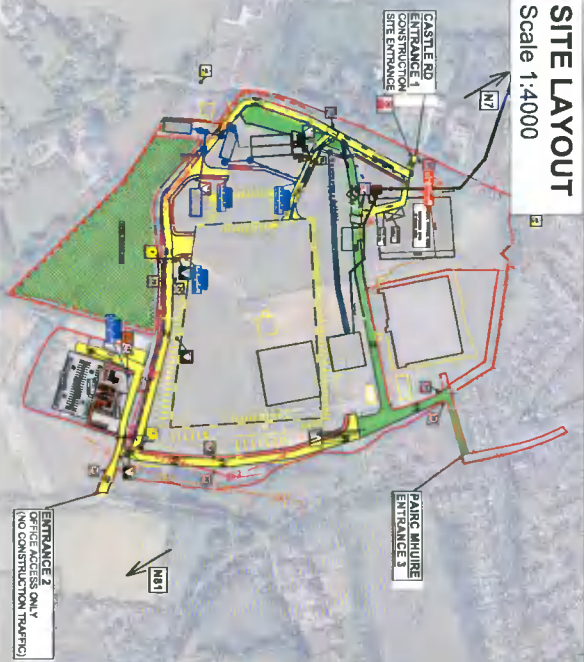
SITE ENTRANCES - TM PLANS



ENTRANCE 3 - PAIRC MHUIRE



ENTRANCE 1 - CASTLE RD



SITE LAYOUT
Scale 1:4000

MAP
Scale 1: 1000



PAIRC MHUIRE ENTRANCE 3

CITYWEST DISPOSAL LOCATION

LEAVE SITE FOR CITYWEST DISPOSAL SITE ALONG THIS ROUTE

RETURN TO SITE FOR LOADING - PLEASE REFER TO SITE LAYOUT FOR DETAILS

ENTRANCE 2

- NOTES:**
1. ALL DIMENSIONS ARE IN METERS (mm) UNLESS NOTED OTHERWISE
 2. ALL SITE USES IN MATERIALS AND RELATED TO THE ORDINARY SWANBY DATA (MAIN HEAD) UNLESS NOTED OTHERWISE
 3. ENSURE THIS DRAWING IS THE RELEVANT DESIGN AND READ IN CONJUNCTION WITH ALL RELEVANT DOCUMENTS
 4. TO BE VIEWED ON A1 PAPER SIZE



ENTRANCE 3 - PAIRC MHUIRE

- KEY / SYMBOLS:**
- SITE BOUNDARY / FENCE
 - SITE ACCESS RD
 - PEDESTRIAN ACCESS
 - EXISTING SITE ACCESS RD
 - MATERIAL STORAGE AREA

NOTES:

1. TMPL to be read in conjunction with the CCIL Waste Management Plan and Construction Environmental Plan

SITE TEAM CONTACT DETAILS:

Anthony Croke - Contracts Manager
Phone: +353 86 397 4495
Email: acroke@coffeygroup.com

Pearse Scanlon - Project Manager
Phone: +353 86 8509045
Email: pscanlon@coffeygroup.com

REV	DESCRIPTION	DATE	BY	CHECKED
01	FOR INFORMATION	09/06/21	PW	AC

APPROVED BY	DATE	DESIGNED BY	DATE
AC	09/06/21	PS	09/06/21
PW	09/06/21	PW	09/06/21

CONFIDENTIALITY NOTE

DESIGN, PROCESSING, PROCEEDINGS AND ASSOCIATED INFORMATION SET OUT HEREIN AND CONTAINED IN ANY SUBSEQUENT RECORDS, APPROVED DRAWINGS OR OTHER DOCUMENTS, IS THE PROPERTY OF COFFEY GROUP. PERMISSION MUST BE OBTAINED BY COFFEY GROUP PRIOR TO DISTRIBUTION TO PARTIES OTHER THAN THE ADDRESSEE.

IRISH WATER
COLLIV HOUSE,
24-26 TALBOT STREET,
DUBLIN 1 D01 NP86

Uisce Éireann - IRISH WATER

TPS

coffey
Anthony Croke
Contracts Manager
Tel: 01-4544111
Fax: 01-4544111
www.coffeygroup.com

PROJECT NO: J1387

TITLE: SAGGART RESERVOIR DESIGN AND BUILT CONTRACT

STATUS: CONSTRUCTION STAGE TM PLAN CITYWEST MATERIAL DISPOSAL

FOR INFORMATION

ISSUING NO: J1387-TM-007

REVISION: 01