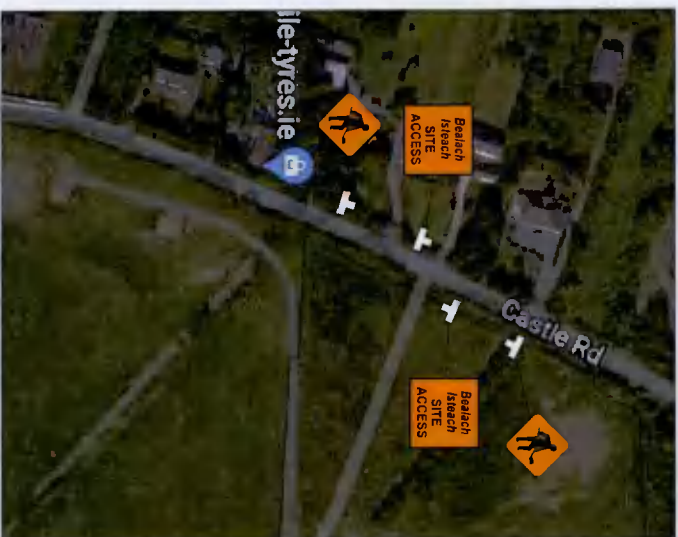


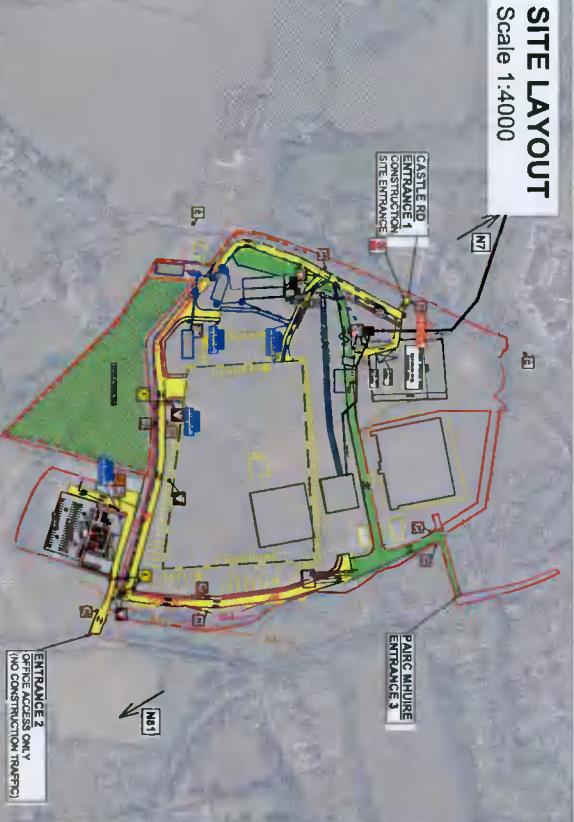
**SITE ENTRANCES - TM PLANS**



**ENTRANCE 3 - PAIRC MHUIRE**

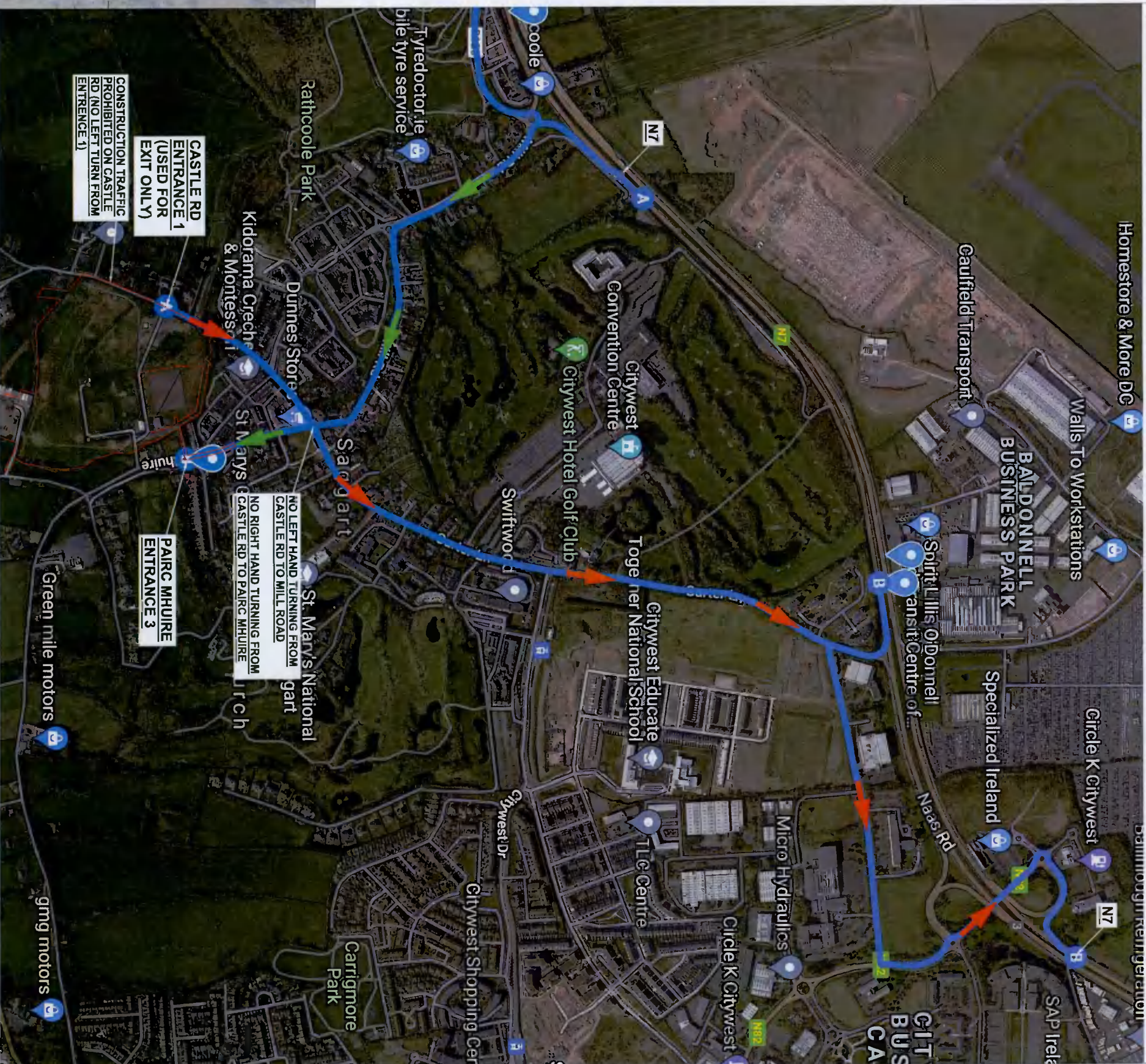


**ENTRANCE 1 - CASTLE RD**



**SITE LAYOUT**  
Scale 1:4000

**MAP**  
Scale 1: 5000



**NOTES:**  
1. ALL DIMENSIONS ARE IN METRES (MM) UNLESS NOTED OTHERWISE  
2. ALL LEVELS ARE IN METRES AND RELATE TO THE OS/DANCE SURVEY DATUM (AUN HEAD (M) UNLESS NOTED OTHERWISE)  
3. ENSURE THE DRAWING IS THE RELEVANT REVISION AND READ IN CONJUNCTION WITH ALL RELEVANT DOCUMENTS  
4. TO BE VIEWED ON A1 PAPER SIZE



- KEY / SYMBOLS:**
- SITE BOUNDARY / FENCE
  - SITE ACCESS RD
  - PEDESTRIAN ACCESS
  - EXISTING SITE ACCESS RD
  - MATERIAL STORAGE AREA

**NOTES:**  
1. TMP to be read in conjunction with the CCIL Waste Management Plan and Construction Environmental Plan

**SITE TEAM CONTACT DETAILS:**  
Anthony Crake - Contracts Manager  
Phone: +353 85 387 4495  
Email: acrake@coffeys.com  
Pearse Scanlon - Project Manager  
Phone: +353 86 5509045  
Email: pscanlon@coffeys.com

| REV | DESCRIPTION     | DATE     | BY | CHECK |
|-----|-----------------|----------|----|-------|
| 01  | FOR INFORMATION | 09/06/21 | PW | AC    |

**CONFIDENTIALITY NOTE:**  
DESIGN, PROCESS, PROCEDURES AND ASSOCIATED INFORMATION SET OUT HEREIN AND CONTAINED IN ANY SUBSEQUENT REVISED APPENDICES, DRAWINGS, REPORTS, STATEMENTS AND DOCUMENTS ARE THE PROPERTY OF COFFEY GROUP. PERMISSION MUST BE OBTAINED BY COFFEY GROUP PRIOR TO DISTRIBUTION TO PARTIES OTHER THAN THE ADDRESSEE.

**IRISH WATER**  
COLIVL HOUSE  
24-26 TALBOT STREET,  
DUBLIN 1, D01 NP98



**CONTRACTOR:**  
SAGGART RESERVOIR  
DESIGN AND BUILT CONTRACT

**PROJECT NO.:**  
J1387

**TITLE:**  
CONSTRUCTION STAGE TM PLAN  
N7 MATERIAL DISPOSAL ONLY ROUTE

**FOR INFORMATION**

DATE: 01/06/21

REVISION: 01