

- LIST OF IRISH WATER STANDARD DETAILS BROUGHT INTO THE CONTRACT
- STD-W-04 GENERAL PIPE CONNECTIONS (SHEET 1 OF 7)
 - STD-W-05 GENERAL PIPE CONNECTIONS (SHEET 2 OF 7)
 - STD-W-06 GENERAL PIPE CONNECTIONS (SHEET 3 OF 7)
 - STD-W-07 GENERAL PIPE CONNECTIONS (SHEET 4 OF 7)
 - STD-W-08 GENERAL PIPE CONNECTIONS (SHEET 5 OF 7)
 - STD-W-09 GENERAL PIPE CONNECTIONS (SHEET 6 OF 7)
 - STD-W-10 GENERAL PIPE CONNECTIONS (SHEET 7 OF 7)
 - STD-W-11 TYPICAL SERVICE LAYOUT INDICATING SEPARATION DISTANCES TO WASTEWATERS
 - STD-W-12 TRENCH BACKFILL & BEDDING
 - STD-W-13 SLURGE VALVE FOR DUCTILE IRON (D.I.) PIPE ($\leq 300\text{mm}$ DIA) (SHEET 1 OF 2)
 - STD-W-14 SLURGE VALVE FOR POLYETHYLENE (P.E.) PIPE ($\leq 300\text{mm}$ DIA) (SHEET 2 OF 2)
 - STD-W-15 ON-LINE HYDRANT FOR DUCTILE IRON (D.I.) PIPE (SHEET 1 OF 4)
 - STD-W-16 ON-LINE HYDRANT FOR DUCTILE IRON (D.I.) PIPE (SHEET 2 OF 4)
 - STD-W-17 ON-LINE HYDRANT FOR POLYETHYLENE (P.E.) PIPE (SHEET 1 OF 4)
 - STD-W-18 ON-LINE HYDRANT FOR POLYETHYLENE (P.E.) PIPE (SHEET 2 OF 4)
 - STD-W-19 OFF-LINE HYDRANT FOR POLYETHYLENE (P.E.) PIPE (SHEET 1 OF 4)
 - STD-W-20 OFF-LINE HYDRANT FOR POLYETHYLENE (P.E.) PIPE (SHEET 2 OF 4)
 - STD-W-21 OFF-LINE HYDRANT FOR POLYETHYLENE (P.E.) PIPE (SHEET 3 OF 4)
 - STD-W-22 OFF-LINE HYDRANT FOR POLYETHYLENE (P.E.) PIPE (SHEET 4 OF 4)
 - STD-W-23 PRESSURE REDUCING / SUSTAINING VALVE (P/R/S/V) CHAMBER
 - STD-W-24 METER CHAMBER ($\leq 300\text{mm}$ DIA)
 - STD-W-25 WATER MAIN TRUNK & SUPPORT BLOCKS
 - STD-W-26 SCOUR CHAMBER & HEAD WALL ARRANGEMENTS
 - STD-W-27 WOODRUFF HYDRANT
 - STD-W-28 TYPICAL BRICK / STREAM CROSSING FOR WATER MAIN

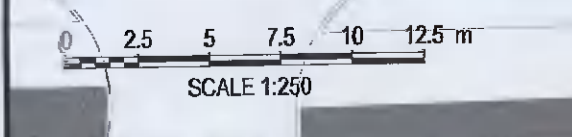
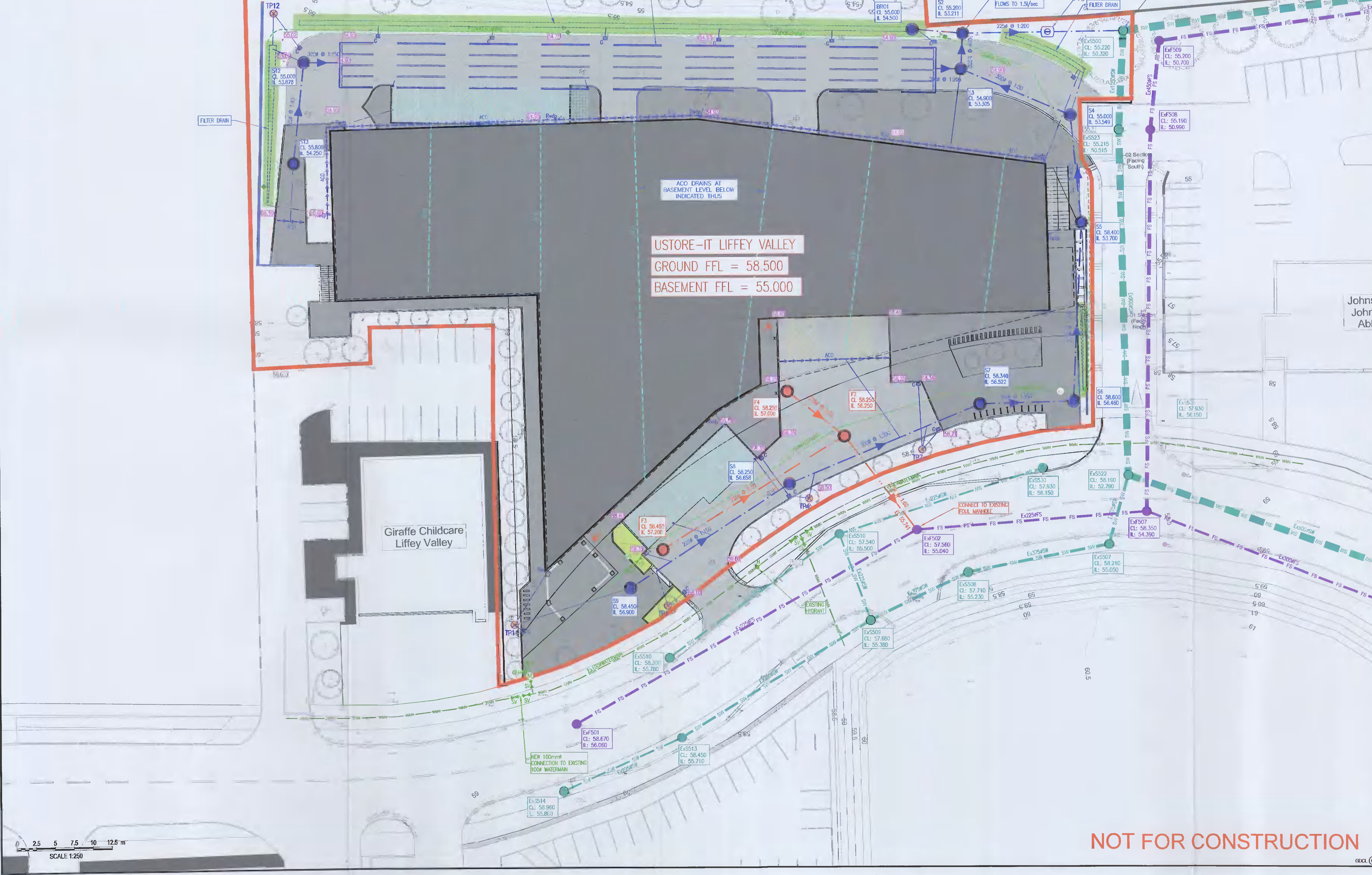
- LIST OF IRISH WATER WASTEWATER STANDARD DETAILS BROUGHT INTO THE CONTRACT
- STD-WW-02 TYPICAL LAYOUT FOR SEWER WITHIN NEW DEVELOPMENT
 - STD-WW-03 DRAIN AND SERVICE CONNECTION PIPING
 - STD-WW-04 TYPICAL SEWER/SERVICE PIPE CONNECTION
 - STD-WW-05 TYPICAL SERVICE LAYOUT INDICATING SEPARATION DISTANCES
 - STD-WW-06 RESTRICTIONS ON TREES/SHRUBS PLANTING ADJACENT TO SEWERS
 - STD-WW-07 TRENCH BACKFILL & BEDDING
 - STD-WW-08 CONCRETE RED BRICK/CLAY & SURROUND TO WASTEWATER PIPES
 - STD-WW-09 BLOCKWORK MANHOLE ($\leq 450\text{mm}$)
 - STD-WW-10 PRE-CAST CONCRETE MANHOLE
 - STD-WW-11 IN-SITU CONCRETE MANHOLE
 - STD-WW-12 BACKDROP MANHOLES
 - STD-WW-13 PRIVATE SIDE INSPECTION CHAMBER

NOTES

- ALL DRAWINGS TO BE CHECKED BY CONTRACTOR ON SITE AND ENGINEER INFORMED OF DISCREPANCIES BEFORE WORK COMMENCES
- ALL LEVELS ARE IN METRES AND ARE RELATED TO ORDNANCE DATUM
- ALL DIMENSIONS TO BE IN MILLIMETERS UNLESS NOTED OTHERWISE
- CONTRACTOR SHALL SATISFY HIMSELF AS TO THE ACCURACY OF FURNISHED LEVELS ON SITE PRIOR TO COMMENCEMENT OF WORKS ON SITE
- ALL SURFACE WATER DRAINAGE WORKS TO BE IN ACCORDANCE WITH THE REQUIREMENTS OF THE LOCAL AUTHORITY'S CODE OF PRACTICE FOR DRAINAGE AND THE GRIDS
- ALL SURFACE WATER SEWERS TO BE CLASS H CONCRETE TO EN1916 & IS 8 2004
- ALL FOLL DRAINAGE WORKS TO BE IN ACCORDANCE WITH IRISH WATER'S CODE OF PRACTICE FOR WASTEWATER SUPPLY AND WASTEWATER INFRASTRUCTURE STANDARD DETAILS
- FOLL SEWERS TO BE THERMOPLASTIC STRUCTURED WALL PIPES (COMPLYING WITH THE PROVISION OF IS EN 13476 AND WS 4-35-01 2000) AND COMPLY WITH THE REQUIREMENTS OF THE IRISH WATER CODE OF PRACTICE FOR WASTEWATER SUPPLY AND WATER INFRASTRUCTURE STANDARD DETAILS
- WATERMAIN INSTALLATION AND ALL WATER SUPPLY WORKS TO BE IN ACCORDANCE WITH THE REQUIREMENTS OF IRISH WATER'S CODE OF PRACTICE FOR WATER SUPPLY AND WATER INFRASTRUCTURE STANDARD DETAILS
- WATERMANS TO BE TYPE HPPE, PE-100, SDR-17 RATED AND SHALL CONFORM TO IS EN 12201 (PART 1, PART 2 & PART 3)
- WATERMAIN SERVICE CONNECTION PIPE TO BE HDPE (PE-80) WITH ANCHOR BLOCKS TO BE POSITIONED AT DEAD ENDS, TEES, BENDS AND AT EACH SIDE OF HYDRANTS AND VALVES IN ACCORDANCE WITH THE REQUIREMENTS OF IRISH WATER STANDARD DETAIL STD-W-28 (WATER MAIN THRUST AND SUPPORT BLOCKS)
- HYDRANT OUTLET TO BE 200mm BELOW GROUND LEVEL UNLESS REQUESTED OTHERWISE
- WHERE COVER TO PIPE IS LESS THAN 900mm IN GREEN AREAS AND 1200mm IN TRAFFICKED AREAS, ENCASE PIPE IN NEW 150mm CONCRETE WITH MOVEMENT JOINTS

LEGEND

- PROPOSED FOLL MANHOLE
- PROPOSED FOLL SEWER
- PROPOSED FOLL DOWNPIPE WITH ROOFING EYE
- PROPOSED FOLL COLLECTOR DRAIN
- PROPOSED SURFACE WATER MANHOLE
- PROPOSED SURFACE WATER SEWER
- PROPOSED SURFACE WATER DOWNPIPE WITH ROOFING EYE
- PROPOSED LINEAR SURFACE DRAIN (ACC OSA)
- PROPOSED LINEAR SURFACE DRAIN AT BASEMENT SLAB LEVEL (ACC OSA)
- PROPOSED HPPE (PE100 SDR 17) WATERMAIN
- SLURGE VALVES AS PER IRISH WATER STANDARD DETAIL STD-W-14/15
- HYDRANTS AS PER IRISH WATER STANDARD DETAIL STD-W-16/18
- AIR VALVES AS PER IRISH WATER STANDARD DETAIL STD-W-20/21
- PROPOSED BOUNDARY BOX AND HOPE SERVICE CONNECTION (PE80 SDR 17)
- METER CHAMBER AS PER IRISH WATER STANDARD STD-W-26
- EXISTING SPOT/ROAD LEVEL
- EXISTING ROAD/SPOT LEVEL
- EXISTING FOLL SEWER
- EXISTING SURFACE WATER SEWER
- EXISTING WATERMAIN
- SITE BOUNDARY
- PROPOSED BUILDING
- PROPOSED FOOTPATH
- PROPOSED ROADWAY
- PROPOSED PERMEABLE PAVING
- EXTENT OF BASEMENT



NOT FOR CONSTRUCTION

Rev	Date	Description	By	Chk
P1	25/01/22	RFI RESPONSE	SM	SJ
P	15/10/21	PLANNING SUBMISSION	SM	SJ

PLANNING

gdcl
CONSULTING ENGINEERS

Scope House, Perystown, Dublin D12 K8PP
75 Shelton Street, Covent Garden, London WC2H 9JQ
www.gdclconsulting.com

PROJECT: U-Store-It, Liffey Valley

CLIENT: Oceanglade Ltd

DRAWING TITLE: Combined Underground Services (Civil)

dm. by: PTC	date: Dec '19	scale: 1:250
drawing size: A1	chk: SJ	app: GD
job no: P2005	dra. no: P2005-C-201	rev: P1