

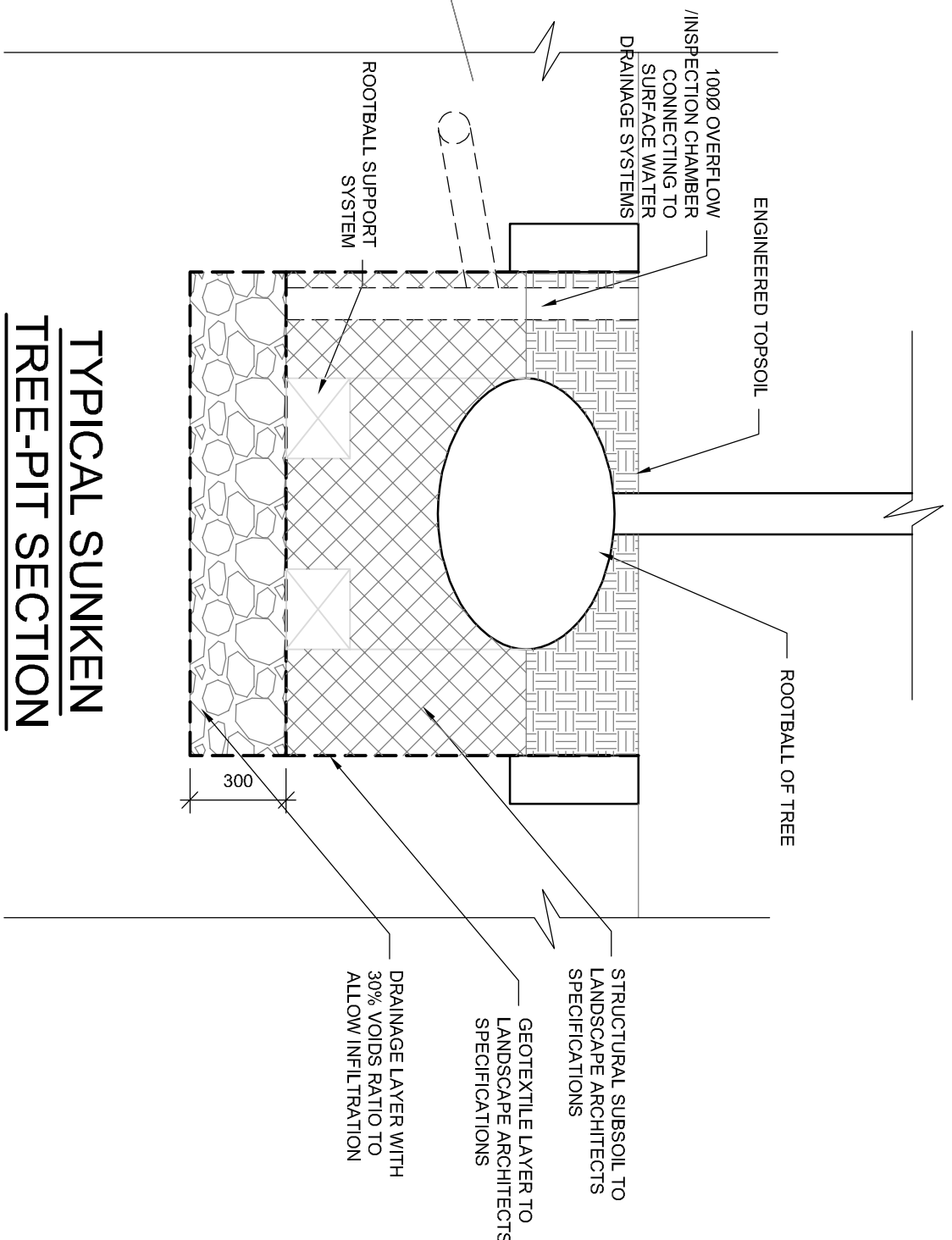


LOCATION OF FOOTPATH GRANTED UNDER PLANNING APPLICATION (ref. SD10A/0064)

**LEGEND**

- EX SURFACE WATER SEWER
- NEW SURFACE WATER SEWER
- NEW TREE PIT OVERFLOW PIPE

TREE PIT SCHEDULE					
TP REF:	PIT AREA	SOIL DEPTH	DRAINAGE LAYER DEPTH	VOIDS %	STORAGE VOLUME
TP1	2.25m <sup>2</sup>	1.0m	0.3m	30%	0.203m <sup>3</sup>
TP2	2.25m <sup>2</sup>	1.0m	0.3m	30%	0.203m <sup>3</sup>
TP3	2.25m <sup>2</sup>	1.0m	0.3m	30%	0.203m <sup>3</sup>
TP4	2.25m <sup>2</sup>	1.0m	0.3m	30%	0.203m <sup>3</sup>
TP5	2.25m <sup>2</sup>	1.0m	0.3m	30%	0.203m <sup>3</sup>
TP6	2.25m <sup>2</sup>	1.0m	0.3m	30%	0.203m <sup>3</sup>
TP7	2.25m <sup>2</sup>	1.0m	0.3m	30%	0.203m <sup>3</sup>
TP8	2.25m <sup>2</sup>	1.0m	0.3m	30%	0.203m <sup>3</sup>
TP9	2.25m <sup>2</sup>	1.0m	0.3m	30%	0.203m <sup>3</sup>
TP10	2.25m <sup>2</sup>	1.0m	0.3m	30%	0.203m <sup>3</sup>
TP11	2.25m <sup>2</sup>	1.0m	0.3m	30%	0.203m <sup>3</sup>
TP12	2.25m <sup>2</sup>	1.0m	0.3m	30%	0.203m <sup>3</sup>
TP13	2.25m <sup>2</sup>	1.0m	0.3m	30%	0.203m <sup>3</sup>
TP14	2.25m <sup>2</sup>	1.0m	0.3m	30%	0.203m <sup>3</sup>
TP15	2.25m <sup>2</sup>	1.0m	0.3m	30%	0.203m <sup>3</sup>
TP16	2.25m <sup>2</sup>	1.0m	0.3m	30%	0.203m <sup>3</sup>
TP17	2.25m <sup>2</sup>	1.0m	0.3m	30%	0.203m <sup>3</sup>
TP18	2.25m <sup>2</sup>	1.0m	0.3m	30%	0.203m <sup>3</sup>
TP19	2.25m <sup>2</sup>	1.0m	0.3m	30%	0.203m <sup>3</sup>
TP20	2.25m <sup>2</sup>	1.0m	0.3m	30%	0.203m <sup>3</sup>
TP21	2.25m <sup>2</sup>	1.0m	0.3m	30%	0.203m <sup>3</sup>
TP22	2.25m <sup>2</sup>	1.0m	0.3m	30%	0.203m <sup>3</sup>
TP23	2.25m <sup>2</sup>	1.0m	0.3m	30%	0.203m <sup>3</sup>
TP24	2.25m <sup>2</sup>	1.0m	0.3m	30%	0.203m <sup>3</sup>
TP25	2.25m <sup>2</sup>	1.0m	0.3m	30%	0.203m <sup>3</sup>
TP26	2.25m <sup>2</sup>	1.0m	0.3m	30%	0.203m <sup>3</sup>
TP27	2.25m <sup>2</sup>	1.0m	0.3m	30%	0.203m <sup>3</sup>
TP28	2.25m <sup>2</sup>	1.0m	0.3m	30%	0.203m <sup>3</sup>
TP29	2.25m <sup>2</sup>	1.0m	0.3m	30%	0.203m <sup>3</sup>
TP30	4.00m <sup>2</sup>	0.5m	0m	N/A	0m <sup>3</sup>
TP31	4.00m <sup>2</sup>	0.5m	0m	N/A	0m <sup>3</sup>
TP32	4.00m <sup>2</sup>	0.5m	0m	N/A	0m <sup>3</sup>
TP33	4.00m <sup>2</sup>	0.5m	0m	N/A	0m <sup>3</sup>
TP34	4.00m <sup>2</sup>	0.5m	0m	N/A	0m <sup>3</sup>
TP35	4.00m <sup>2</sup>	0.5m	0m	N/A	0m <sup>3</sup>
TP36	4.00m <sup>2</sup>	0.5m	0m	N/A	0m <sup>3</sup>
TP37	4.00m <sup>2</sup>	0.5m	0m	N/A	0m <sup>3</sup>
TP38	4.00m <sup>2</sup>	0.5m	0m	N/A	0m <sup>3</sup>
TP39	2.42m <sup>2</sup>	0.5m	0m	N/A	0m <sup>3</sup>
TP40-43	5.78m <sup>2</sup>	0.5m	0m	N/A	0m <sup>3</sup>



**SUSTAINABLE URBAN DRAINAGE SYSTEM (SUDS):**

**GREEN ROOF:**  
IT IS PROPOSED TO INCORPORATE THE USE OF GREEN ROOFING SYSTEMS INTO ROOF DESIGNS IN ORDER TO PROVIDE SUFFICIENT INTERCEPTION STORAGE TO MEET THE REQUIREMENTS OF THE GOBOS. THE GREEN ROOF SYSTEM TO THE ROOF OF THE APARTMENT BUILDINGS SHALL BE AN EXTENSIVE GREEN ROOF WITH APPROXIMATELY 10% OF THE ROOF AREA COVERED BY VEGETATION. THE SYSTEM SHALL BE DESIGNED TO RETAIN SUFFICIENT RAINWATER TO PROVIDE INTERCEPTION STORAGE VOLUME AS REQUIRED BY GOBOS INTERCEPTION CRITERIA.

**TREE PITS:**  
IT IS ALSO PROPOSED TO INCORPORATE BOTH SUNKEN AND RAISED TREE PITS THROUGHOUT THE DEVELOPMENT. THE RAISED TREE PITS WILL BE ELEVATED ABOVE THE FOOTPATH SLAB. THE TREE PITS WILL PROMOTE INFILTRATION INTO THE SOIL. INFILTRATION AND WILL ALSO BE USED UP BY THE TREES.

**TREE PITS DRAINAGE PLAN**

SCALE 1:250



TREE PIT EXAMPLE

Rev	Date	Chkd	Description
1	17/01/22	SR	FW SHD Stage 3 Submission
0	31/05/21	SR	FW SHD Stage 2 Submission

**LOHAN & DONNELLY**  
Consulting Engineers

13 Gardiner Place, Moynagh Square, Dublin 1. T: 01 8787770  
W: www.lohan-donnelly.com E: info@lohan-donnelly.com

**Project:** Dolcain House SHD, Clondalkin, Dublin 22, for Randlewood Holdings LTD

**Drawing:** Tree Pits Drainage Plan & Section Site Layout A

**Model Reference:** 2148-LDE-ZZ-ZZ-M2-SC-0007  
**Drawing Reference:** 2148-LDE-ZZ-00-DR-SC-5C-13A

**Scale:** @A1  
**Date:** Aug '21

**Project No:** 2148  
**Draw No:** C13-A

**Model Rev:** P.01.2  
**Stability:** S0