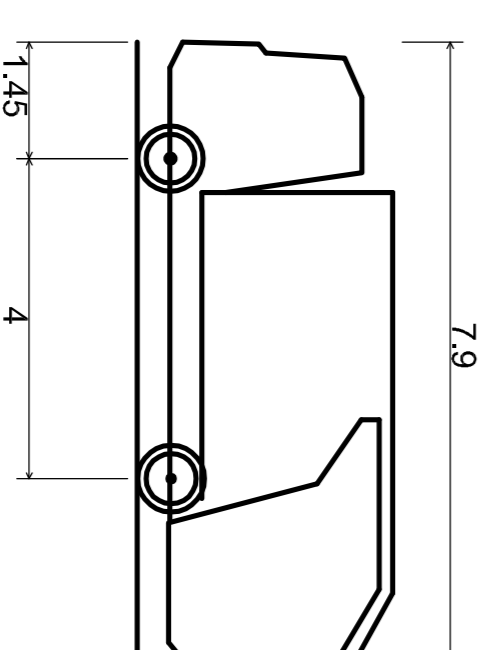




REFUSE TENDER SWEPT PATH

SCALE 1:250



- DB32 Refuse Vehicle**
- Overall Length 7.900m
- Overall Width 4.000m
- Overall Body Height 3.183m
- Min Body Ground Clearance 0.388m
- Max Track Width 2.400m
- Lock to lock time 6.00s
- Kerb to Kerb Turning Radius 9.625m

- 7.900m
- 2.400m
- 3.183m
- 0.388m
- 2.400m
- 6.00s
- 9.625m

Rev	Date	Dim	CHK'd	Description
1	17/01/22	SR	FW	SHD Stage 3 Submission
0	31/05/21	SR	FW	Issued for Stage 2 Submission



LOHAN & DONNELLY
Consulting Engineers

13 Gardiner Place, Mountjoy Square, Dublin 1. T: 01 8787770
W: www.lohan-donnelly.com E: info@lohan-donnelly.com

Project:	Dolcain House SHD, Clondalkin, Dublin 22 for Randselwood Holdings LTD
----------	---

Project No:	2148	Dwg No:	TO2-A
-------------	------	---------	-------

Drawing:	Sweepth Path Analysis Refuse Tender Site Layout A
----------	---

Scale:	@A1	Date:	MAY '21
--------	-----	-------	---------

Drawn:	SR	Rev:	1
--------	----	------	---

Model Reference:	2148-LDE-ZZ-ZZ-M2-SC-0006
Drawing Reference:	2148-LDE-ZZ-ZZ-DR-SC-1T02-A

Model Rev:	P.01.1
Suitability:	S0