



**SITE SUDS PLAN**  
SCALE 1:250

**SUSTAINABLE URBAN DRAINAGE SYSTEM (SUDS):**

**GREEN ROOF:**  
IT IS PROPOSED TO INCORPORATE THE USE GREEN ROOFING SYSTEMS INTO THE DESIGN WITH THE AIM OF REDUCING THE VOLUME OF RUNOFF. THE GREEN ROOF STORAGE TO MEET THE REQUIREMENTS OF THE CDD. THE GREEN ROOF SYSTEM TO BE USED TO PROVIDE ADDITIONAL STORAGE TO MEET THE REQUIREMENTS OF THE CDD. THE GREEN ROOF SYSTEM TO BE USED TO PROVIDE ADDITIONAL STORAGE TO MEET THE REQUIREMENTS OF THE CDD. THE GREEN ROOF SYSTEM TO BE USED TO PROVIDE ADDITIONAL STORAGE TO MEET THE REQUIREMENTS OF THE CDD.

**PERMEABLE PAVING:**

IT IS PROPOSED TO INCORPORATE A PERMEABLE PAVING SYSTEM INTO THE SITE DESIGN WITH THE AIM OF REDUCING THE VOLUME OF RUNOFF. THE PERMEABLE PAVING IMPROVING QUALITY OF RUNOFF GENERALLY A MINIMUM OF 250mm DEPTH OF 63mm-10mm SUB BASE WITH APPROXIMATELY 30% Voids IS TO BE USED TO PROVIDE ADDITIONAL STORAGE TO MEET THE REQUIREMENTS OF THE CDD. THE PERMEABLE PAVING SYSTEM TO BE USED TO PROVIDE ADDITIONAL STORAGE TO MEET THE REQUIREMENTS OF THE CDD.

**TREE PITS:**

THREE PIT SYSTEMS WILL ALSO BE INCORPORATED THROUGH THE USE OF RECESSED ROCKETS OF 1000-6000mm DEPTH. THE TREE PITS SHALL BE INCORPORATED AN OVERFLOW DRAINAGE SYSTEM AT THEIR BASE WHICH COMMENTS TO THE SURFACE TO ALLOW STORM WATER TO PERMEATE SLOWLY INTO THE SUBSTRATE. THE TREE PITS SHALL BE INCORPORATED AN OVERFLOW DRAINAGE SYSTEM AT THEIR BASE WHICH COMMENTS TO THE SURFACE TO ALLOW STORM WATER TO PERMEATE SLOWLY INTO THE SUBSTRATE.

**FILTER DRAIN:**

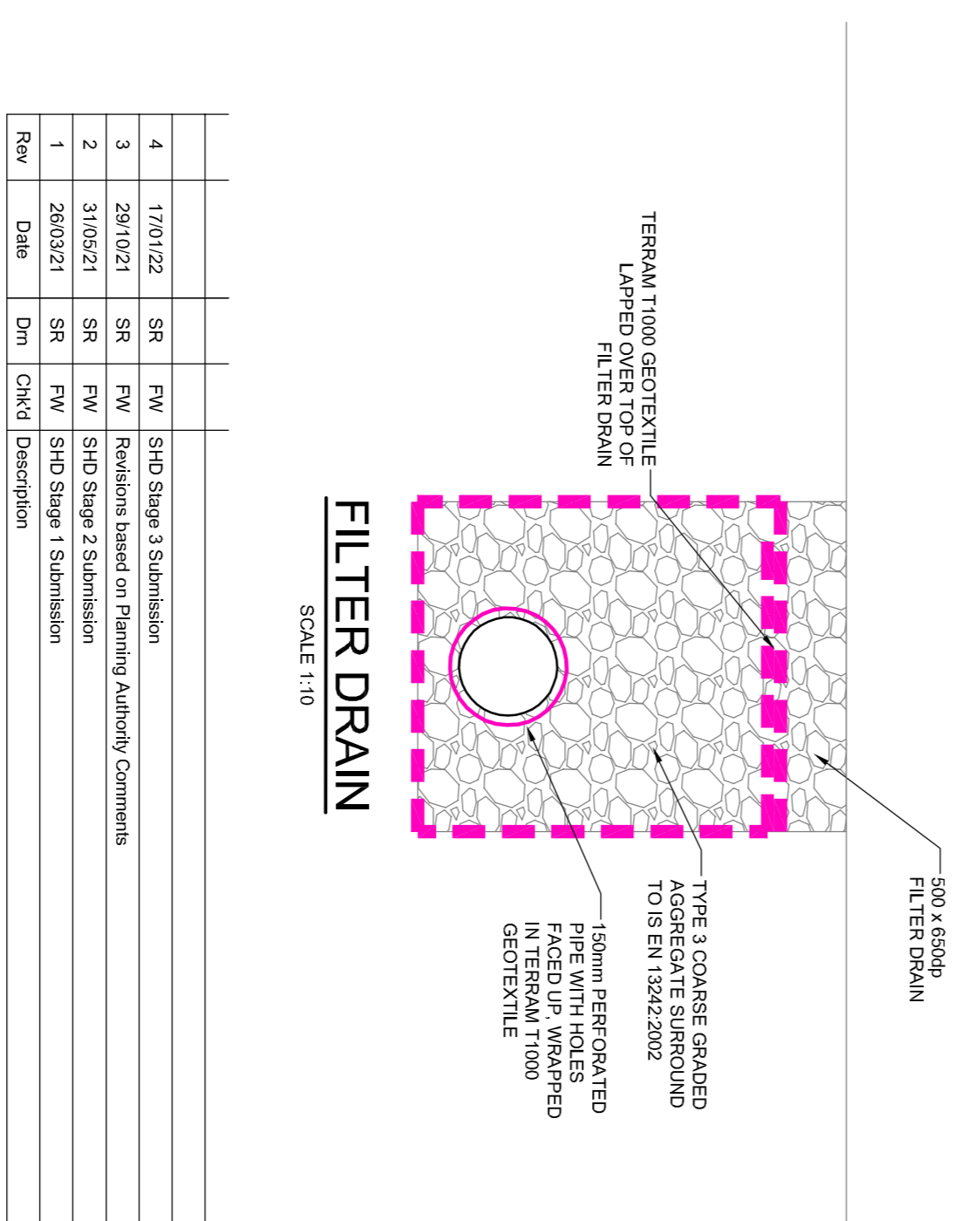
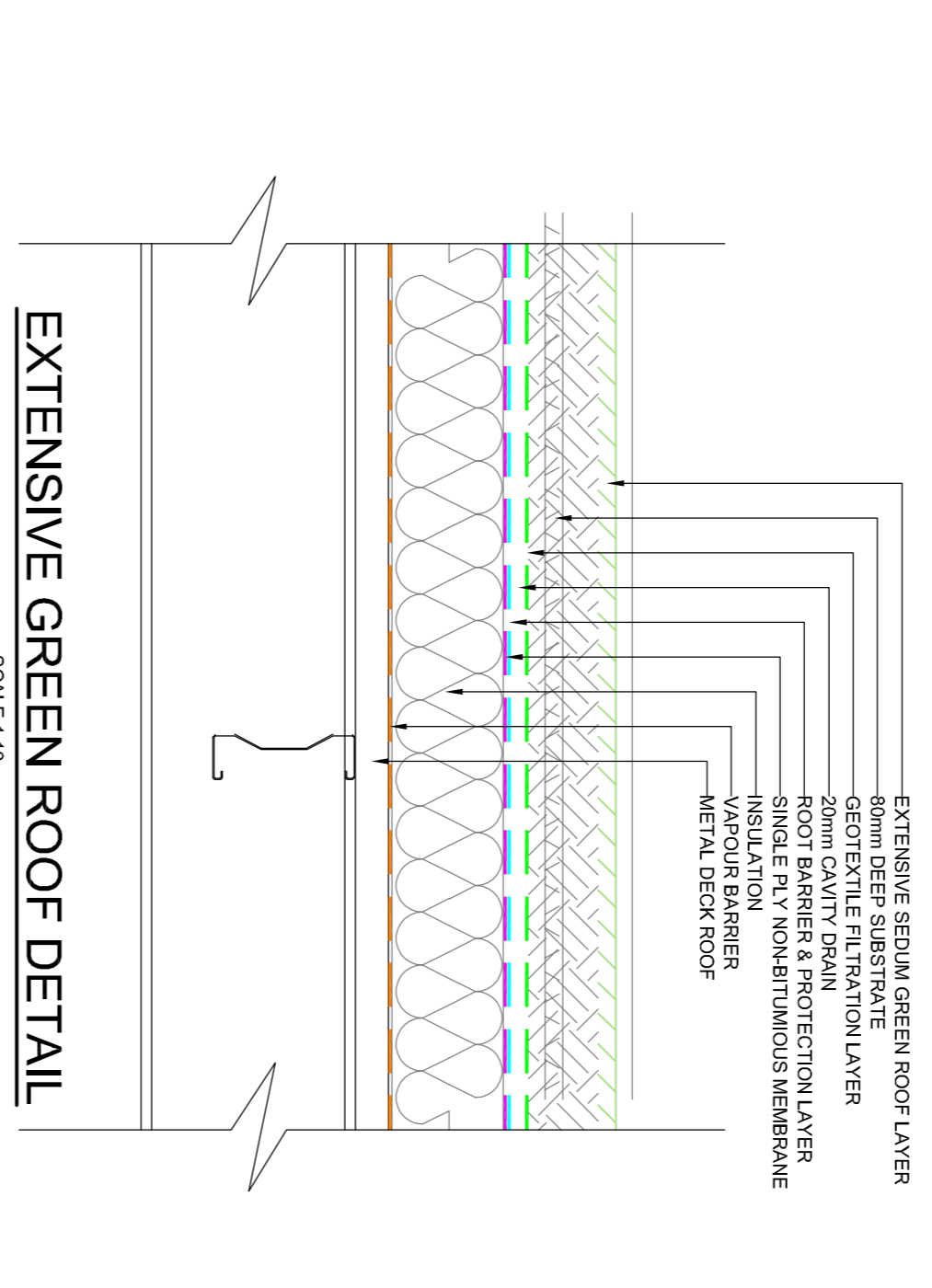
A FILTER DRAIN WILL BE INCORPORATED IN THE DESIGN OF THE DEVELOPMENT IN THE FORM OF A PERFORATED PIPE WITH A 150mm PERFORATED PIPE WITH HOLES IN TERRAM T1000 GEOTEXTILE. THE FILTER DRAIN WILL BE INCORPORATED IN THE DESIGN OF THE DEVELOPMENT IN THE FORM OF A PERFORATED PIPE WITH A 150mm PERFORATED PIPE WITH HOLES IN TERRAM T1000 GEOTEXTILE.

**SURFACES LEGEND**

	GRASS CONCRETE
	GRASS PERMEABLE PLANTING
	PERMEABLE PAVING
	IMPERMEABLE PAVING
	HEDGES/VEGETATION
	EXTENSIVE GREEN ROOF
	PRIVACY PLANTERS
	BIORETENTION AREAS



**GRASSCRETE EXAMPLE**



Rev	Date	Chk'd	Description
4	17/01/22	SR	SHD Stage 3 Submission
3	29/10/21	SR	Revisions based on Planning Authority Comments
2	31/05/21	SR	FW   SHD Stage 2 Submission
1	26/03/21	SR	FW   SHD Stage 1 Submission

**LOHAN & DONNELLY**  
Consulting Engineers

13 Gardiner Place, Mountjoy Square, Dublin 1. T: 01 8787770  
www.lohan-donnelly.com E: info@lohan-donnelly.com

Project:	Dolcain House SHD, Clondalkin, Dublin 22, for Randselwood Holdings LTD	Project No:	2148	Doc No:	C08-B
Drawing:	Site SUDS Plan Site Layout B	Scale:	@A1	Date:	May '21
Model Reference:	2148-LDE-ZZ-M2-SC-0003	Drawn:	SR	Rev:	4
Drawing Reference:	2148-LDE-ZZ-00-DR-SC-5C08-B	Model Rev:		Stability:	P 0.1, 1
					S0