

SITE SUDS PLAN
SCALE 1:250

SUSTAINABLE URBAN DRAINAGE SYSTEM (SUDS): GREEN ROOF:

IT IS PROPOSED TO INCORPORATE THE USE GREEN ROOFING SYSTEMS TO MEET THE REQUIREMENTS OF THE GOSOS. THE GREEN ROOF SYSTEM TO THE ROOF OF THE APARTMENT BUILDINGS SHALL BE AN EXTENSIVE GREEN ROOF WITH APPROXIMATELY 88% ROOF COVERAGE. THE SURFACE WATER FROM THE ROOF SHALL BE COLLECTED IN A STORAGE TO PROVIDE INTERCEPTION STORAGE VOLUME AS REQUIRED BY GOSOS INTERCEPTION CRITERIA.

PERMEABLE PAVING:

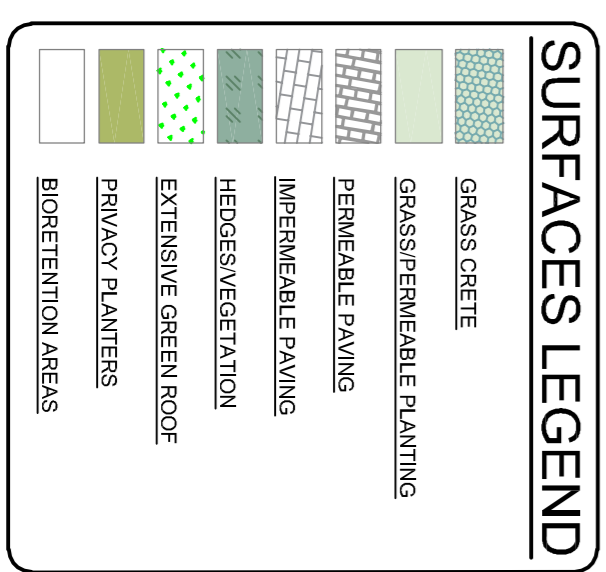
IT IS PROPOSED TO INCORPORATE A PERMEABLE PAVING SYSTEM INTO THE SITE DESIGN WITH THE AIM OF REDUCING THE VOLUME OF SURFACE RUNOFF. A MINIMUM OF 250mm DEPTH OF 65mm-10mm SUB BASE WITH APPROXIMATELY 30% Voids IS TO BE USED TO PROVIDE ADDITIONAL PERMEABLE PAVING TO THE SURFACE. THE INTENTION IS TO PROVIDE A SUSTAINABLE FORM OF STORMWATER SOURCE CONTROL WITHIN THE SITE THAT WILL REDUCE THE TOTAL RUNOFF FROM THE SITE BY TEMPORARILY STORING WATER IN THE PERMEABLE PAVING AND ALLOWING FOR NATURAL INFILTRATION OF THE WATER INTO THE GROUND. THE QUALITY OF RUN-OFF FROM THE SITE SHALL ALSO BE IMPROVED DUE TO THE FILTERING PROCESS OF THE PAVING WHICH REMAINS SILTS AND DEBRIDS IN POCKETS.

TREE PITS:

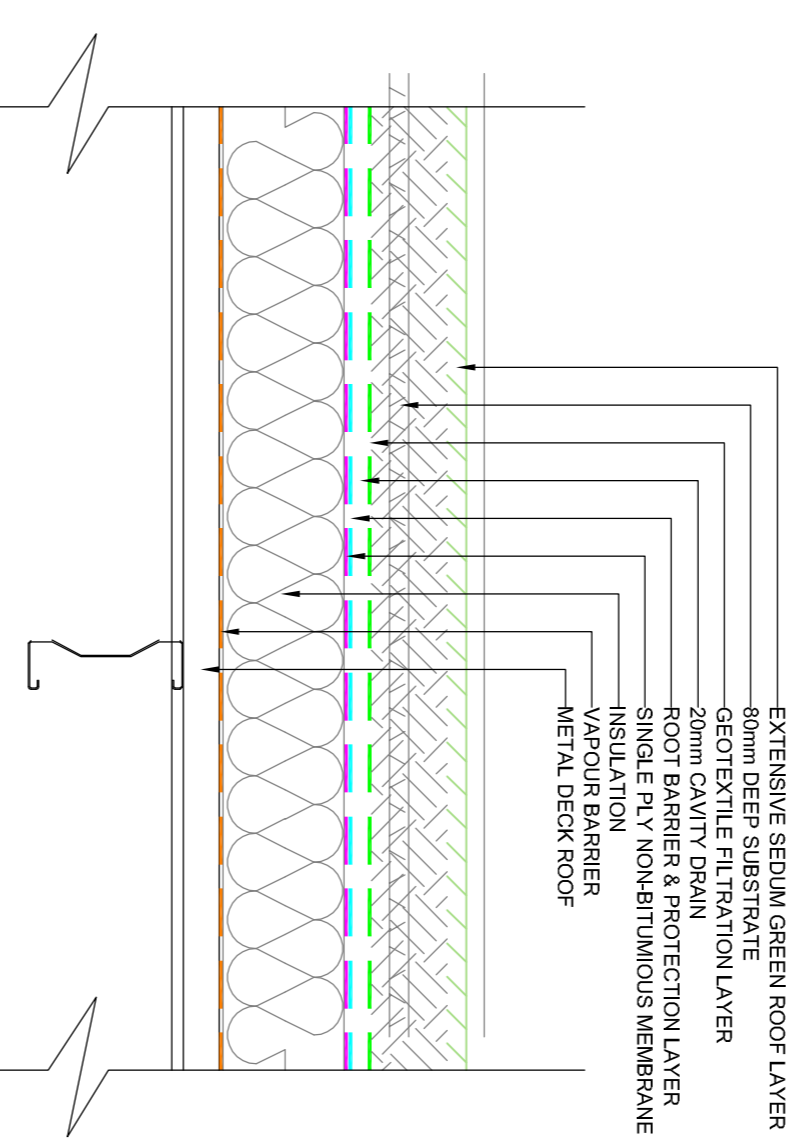
THREE PIT SYSTEMS WILL ALSO BE INCORPORATED THROUGH THE USE OF RECESSED ROCKERS OF 1000-6500P. THE TREE PITS SHALL BE MADE OF COARSE AGGREGATE WHICH WILL ALLOW STORM WATER TO PERMEATE SLOWLY THROUGH THE PERFORATED PIPE AT THE CORNER OF THE SITE AS WELL AS TO FACILITATE SPOROTRANSPARATION IN THE ATTENUATION TANK. THE PERFORATED PIPE AND FILTER DRAIN SHALL BE BUILT INTO THE PERFORATED PIPE AND ENTER THE SURFACE WATER SYSTEM ON SITE AT ATTENUATION TANK.

FILTER DRAIN:

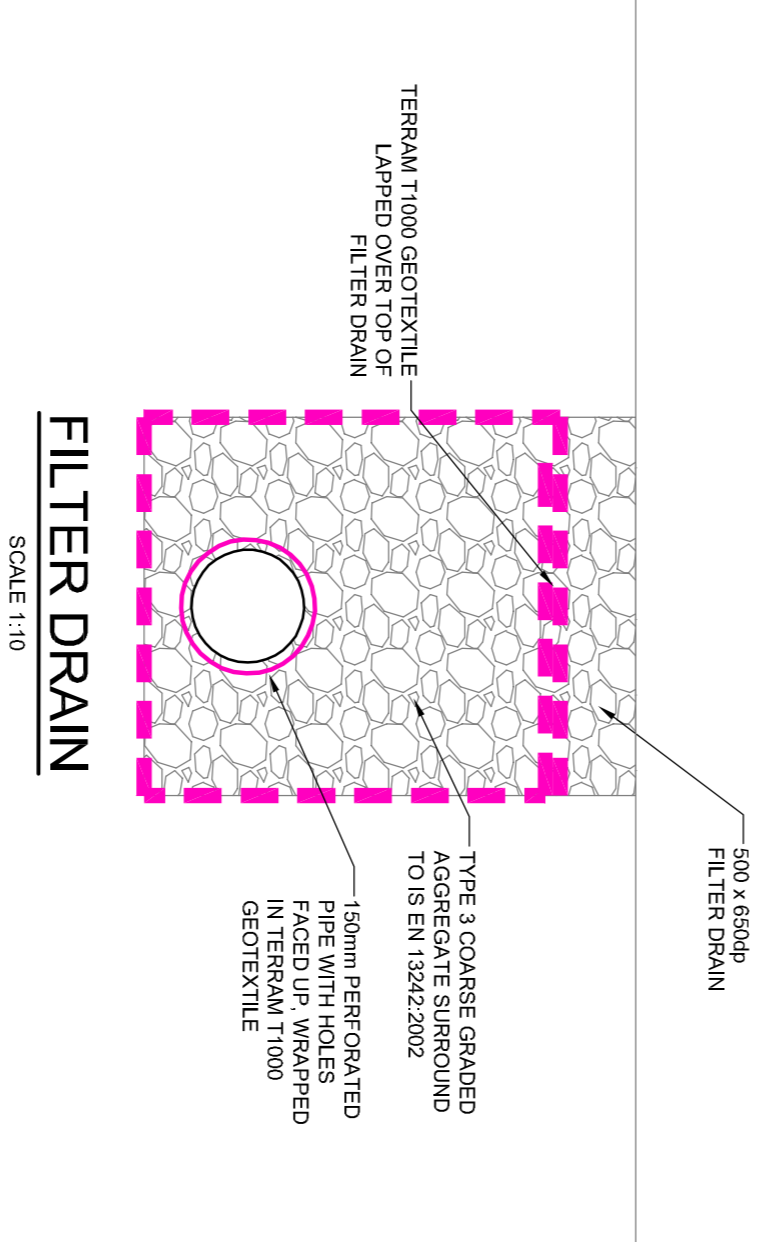
A FILTER DRAIN WILL BE INCORPORATED IN THE DESIGN OF THE DEVELOPMENT IN THE FORM OF A PERFORATED PIPE AT THE CORNER OF THE SITE AS WELL AS TO FACILITATE SPOROTRANSPARATION IN THE ATTENUATION TANK. THE PERFORATED PIPE AND FILTER DRAIN SHALL BE BUILT INTO THE PERFORATED PIPE AND ENTER THE SURFACE WATER SYSTEM ON SITE AT ATTENUATION TANK.



GRASSCRETE EXAMPLE



EXTENSIVE GREEN ROOF DETAIL
SCALE 1:10



FILTER DRAIN
SCALE 1:10

Rev	Date	Chk'd	Description
4	17/01/22	SR	SHD Stage 3 Submission
3	29/10/21	SR	Revisions based on Planning Authority Comments
2	31/05/21	SR	FW SHD Stage 2 Submission
1	26/03/21	SR	FW SHD Stage 1 Submission

LOHAN & DONNELLY
Consulting Engineers

13 Gardiner Place, Mountjoy Square, Dublin 1. T: 01 8787770
www.lohan-donnelly.com E: info@lohan-donnelly.com

Project:	Dolcain House SHD, Clondalkin, Dublin 22, for Randslewood Holdings LTD	Project No:	2148	Dwg No:	C08-A
Drawing:	Site SUDS Plan Site Layout A	Scale:	@A1	Date:	May '21
Model Reference:	2148-LDE-ZZ-ZZ-M2-SC-0003	Drawn:	SR	Rev:	4
Drawing Reference:	2148-LDE-ZZ-00-DR-SC-5C08-A	Model Rev:		Stability:	P 0.1, 1
					S0