

LEGEND	
	NEW FOLI WATER SEWER
	EX. FOLI WATER SEWER
	EX. SURFACE WATER SEWER
	NEW SURFACE WATER SEWER
	EXISTING WATERMAIN
	NEW WATERMAIN

**DRAINAGE NOTES:**

ALL DRAINAGE WORK TO BE CARRIED OUT IN ACCORDANCE WITH IS 852: 2008, WATER SPECIFICATIONS, PART 10, AND THE IRELAND WATER SERVICES AUTHORITY (IWSA) SPECIFICATIONS.

MIN. 150mm C16/20 CONCRETE BED & SURROUND TO BE PROVIDED TO SEWER FOOTPATHS.

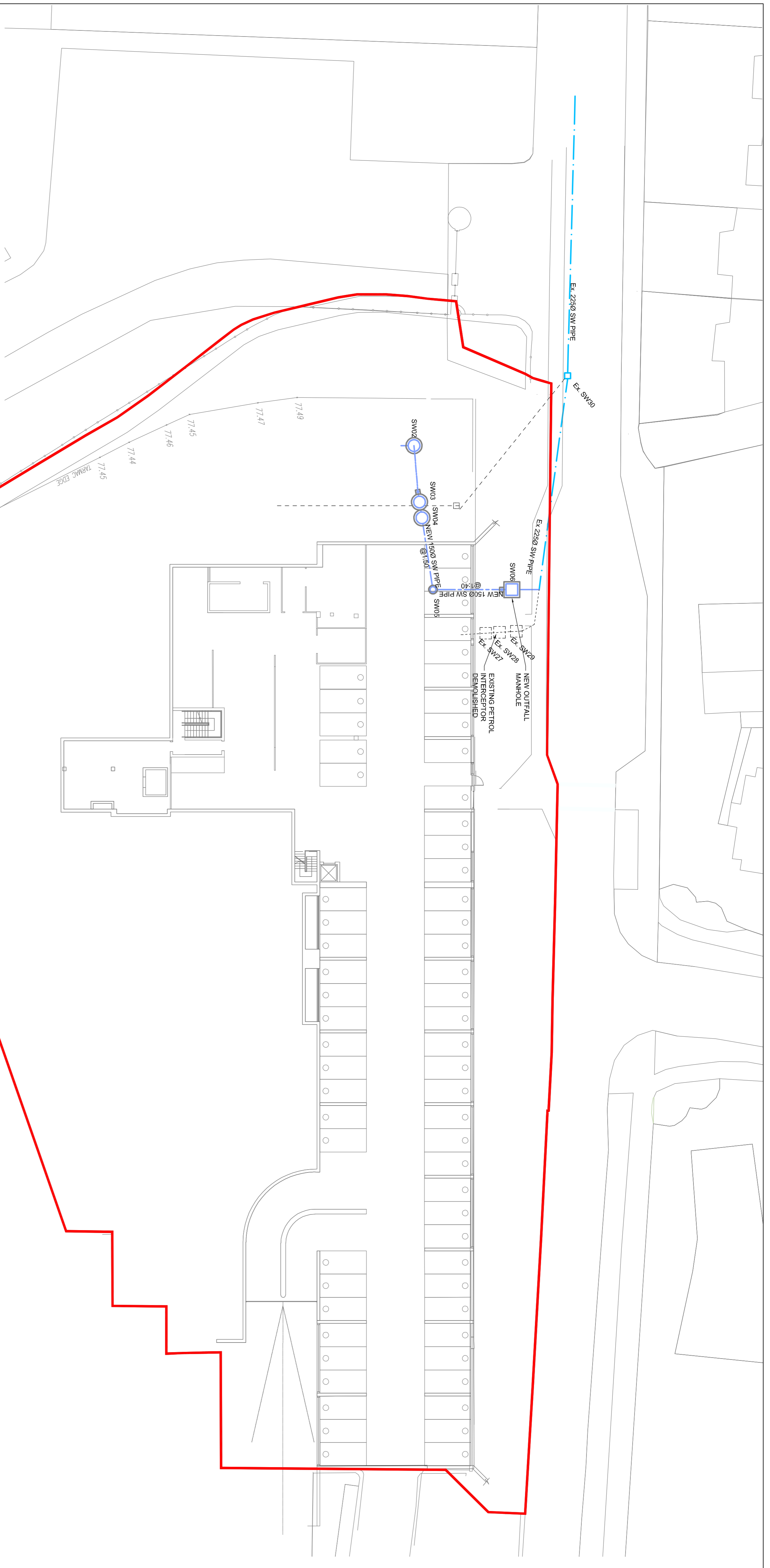
ALL REINSTATEMENT WORKS TO BE IN ACCORDANCE WITH THE REQUIREMENTS OF THE LOCAL AUTHORITY.

ALL MANHOLES COVERS AND FRAME ARE TO BE CLASS D400 TO BS EN 124 U.N.O. 1401 2006/2012.

SEWER PIPE LINES TO BE SWS 400C PIPE UP TO AND INCLUDING 3000 TO IS EN 12002-2010/2.

SEWER PIPE LINES EXCEEDING 3000 TO BE CONCRETE SPIGOT AND SOCKET (2002-2010) AND IS 82004, STRENGTH CLASS 120 WITH MINIMUM CRUSHING LOADS IN ACCORDANCE WITH TABLE B OF BS 5911-1 (2002-2010).

ALL VERTICAL STACK CONNECTIONS TO FOLI SEWER CHAMBERS TO INCORPORATE LONG RADIIUS BENDS AND MUST JOIN MAIN SEWER LINE AT 45° TO DIRECTION OF FLOW.



SURFACE WATER MANHOLE SCHEDULE					
MH REF:	COVER LEVEL	INVERT LEVEL	PIPE Ø	COVER TO PIPE	COMMENTS
EX-SW-01	77.830	T.B.C.	225	T.B.C.	
EX-SW-02	77.830	77.210	225	0.265	
EX-SW-03	77.830	77.480	225	0.425	
EX-SW-04	77.710	T.B.C.	150	T.B.C.	
EX-SW-05	77.830	T.B.C.	150	T.B.C.	
EX-SW-06	77.830	T.B.C.	150	T.B.C.	
EX-SW-07	77.690	T.B.C.	150	T.B.C.	
EX-SW-08	77.580	T.B.C.	150 / 225	T.B.C.	
EX-SW-09	77.480	76.790	225 / 1050	0.280	
EX-SW-10	77.480	T.B.C.	225 / 1050	T.B.C.	
EX-SW-11	77.480	76.975	225	1.200	
EX-SW-12	77.480	T.B.C.	225	T.B.C.	
EX-SW-13	77.630	76.730	150	0.710	
EX-SW-14	77.500	76.800	150/225	0.475	
EX-SW-15	77.710	77.200	150	0.360	
EX-SW-16	77.740	T.B.C.	150	T.B.C.	
EX-SW-17	77.640	T.B.C.	150	T.B.C.	
EX-SW-18	78.200	77.580	150	0.530	
EX-SW-19	78.090	77.490	150	0.630	
EX-SW-20	81.950	T.B.C.	150	T.B.C.	
EX-SW-21	78.780	T.B.C.	225	T.B.C.	
EX-SW-22	76.840	T.B.C.	150	T.B.C.	
EX-SW-23	76.395	T.B.C.	150	T.B.C.	
EX-SW-24	T.B.C.	T.B.C.	150	T.B.C.	
EX-SW-25	T.B.C.	T.B.C.	150	T.B.C.	
EX-SW-26	T.B.C.	T.B.C.	150	T.B.C.	
EX-SW-27	T.B.C.	T.B.C.	150 / 225	T.B.C.	
EX-SW-28	T.B.C.	T.B.C.	225	T.B.C.	
EX-SW-29	T.B.C.	T.B.C.	225	T.B.C.	
EX-SW-30	73.480	72.330	225	0.925	
SW-01	77.980	76.935	1050/225	0.575	
SW-02	77.530	76.785	150	1.955	
SW-03	77.530	74.083	150	3.297	
SW-04	77.530	74.072	150	3.308	
SW-05	74.745	73.894	150	0.661	
SW-06	74.300	72.953 (PROV.)	150	1.661	
SW-07	78.400	77.624	150	0.626	
SW-08	79.000	77.460	150	1.260	
SW-09	78.300	77.480	150	0.780	

**LOWER GROUND FLOOR SURFACE WATER PROPOSED DRAINAGE PLAN**

SCALE 1:250

Rev	Date	Description
3	17/01/22	SR   SHD Stage 3 Submission
2	31/05/21	FW   SHD Stage 2 Submission
1	26/03/21	SR   SHD Stage 1 Submission
0	22/03/21	SR   Preliminary Issue for RCE Application

**LOHAN & DONNELLY**  
Consulting Engineers

13 Gardiner Place, Mountjoy Square, Dublin 1. T: 01 8787770  
www.lohan-donnelly.com E: info@lohan-donnelly.com

Project:	Dolcainn House SHD, Clonsilla, Dublin 22, for Ranelandwood Holdings LTD	Project No:	2148	Disc No:	C06-B
Drawing:	Lower Ground Floor Surface Water Proposed Drainage Plan Site Layout B	Scale:	@A1	Date:	May '21

Model Reference:	2148-LDE-ZZ-ZZ-M2-SC-005	Model Rev.:	P.01.1
Drawing Reference:	2148-LDE-ZZ-B1-DR-SC-5C06-B	Scale:	S0