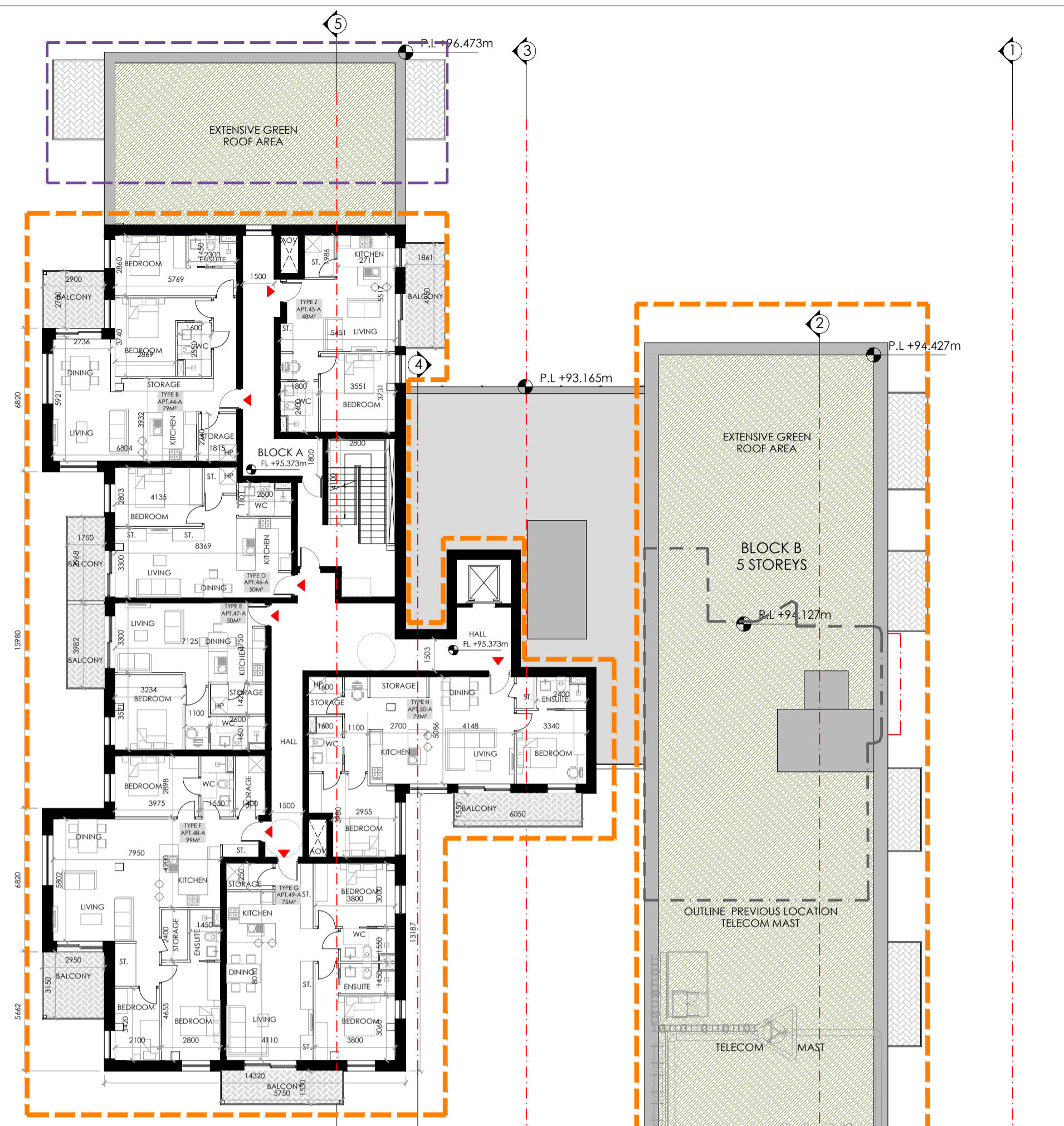
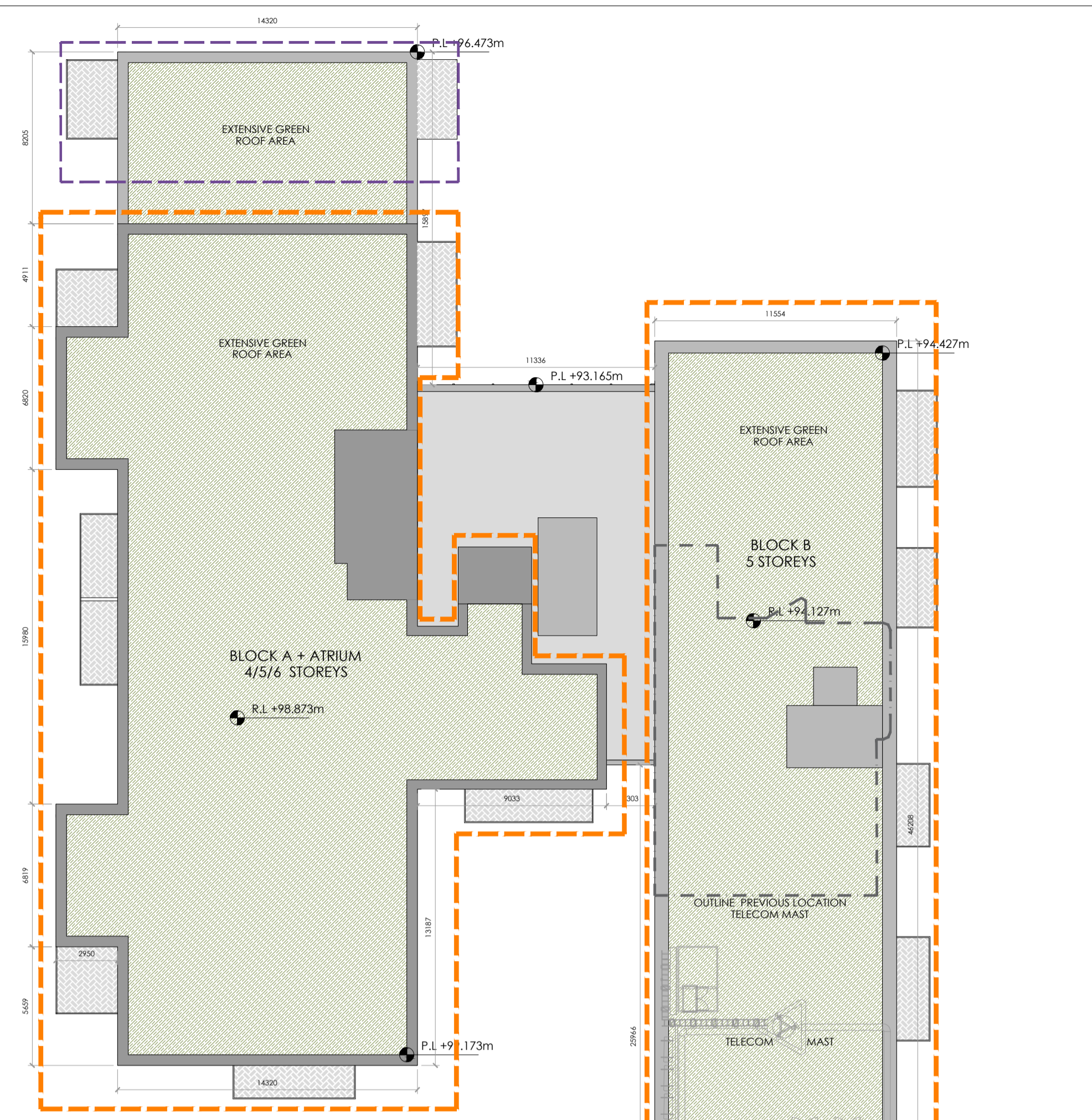


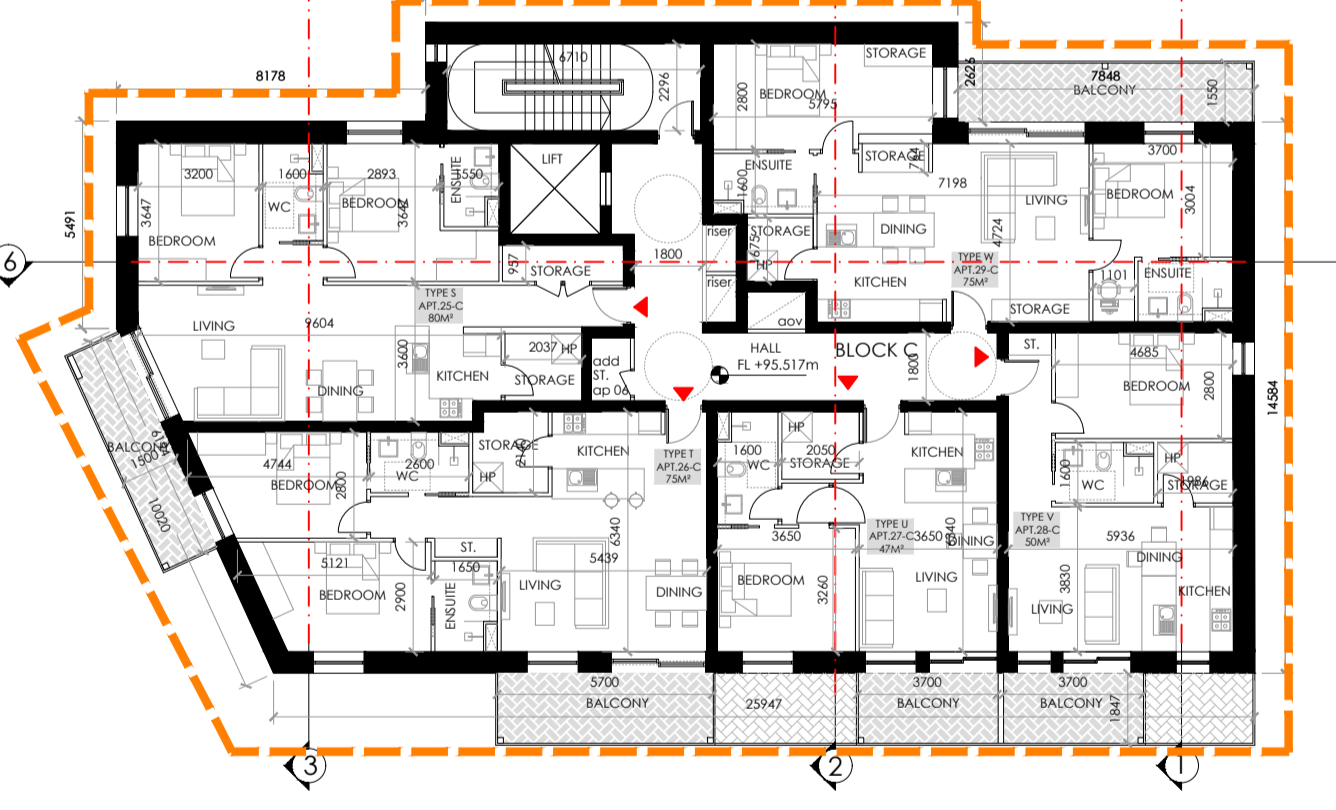
GENERAL NOTES:
 ** Do not scale from this drawing
 ** Use figured dimensions only
 © This drawing is copyright. No part of this document may be re-produced or transmitted in any form or stored in any retrieval system from the copyright holder, except as agreed for use on a project, for which the document was originally issued.



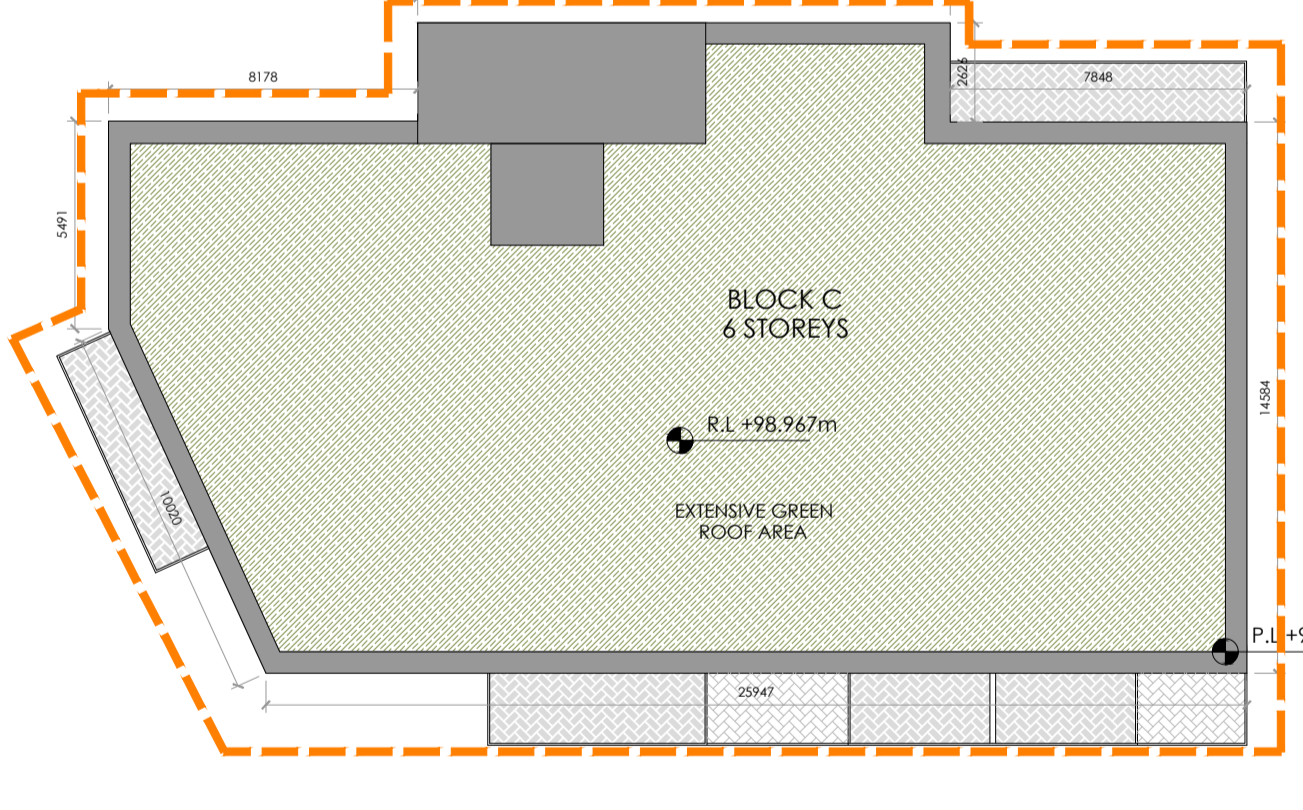
PROPOSED FIFTH FLOOR PLAN - BLOCK A, B & C
 1:200



PROPOSED ROOF PLAN - BLOCK A, B & C
 1:200



FIFTH FLOOR PLAN



FIFTH FLOOR PLAN

LEGEND

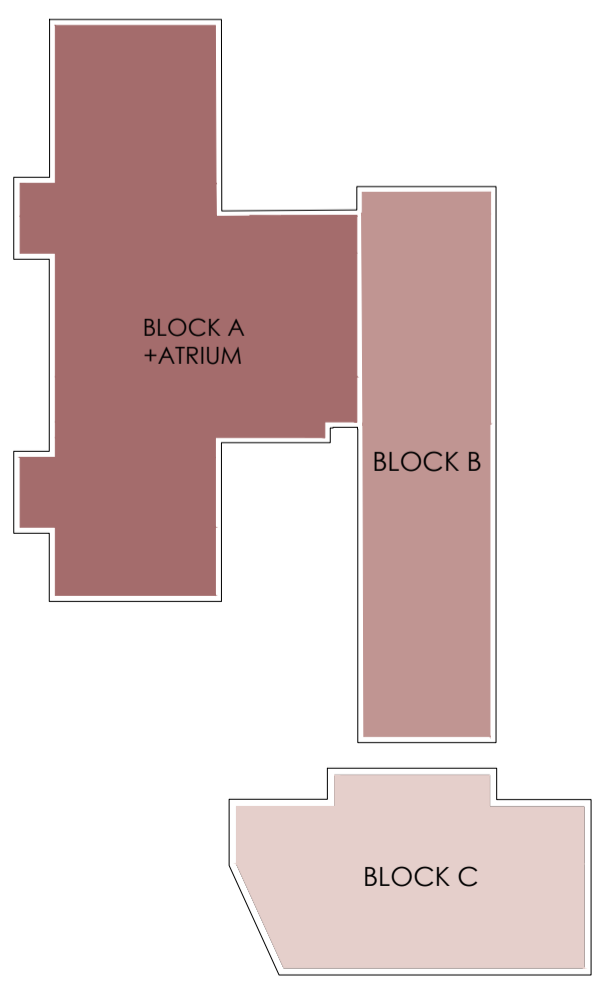
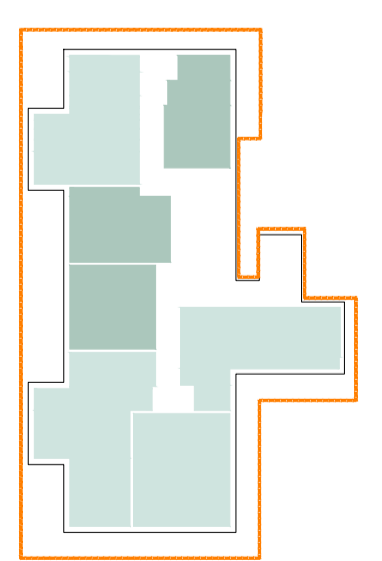
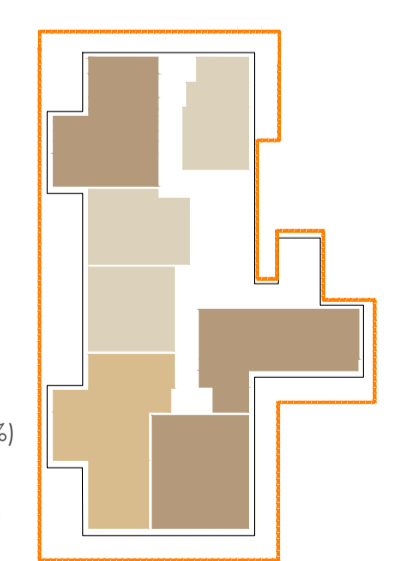
BLOCK A - 4/5/6 Storeys	TOTAL 50 No. UNITS
1 BED APARTMENTS	22 No. UNITS
2 BED APARTMENTS (3 PERSON)	02 No. UNITS
2 BED APARTMENTS (4 PERSON)	20 No. UNITS
3 BED APARTMENTS	06 No. UNITS

BLOCK B - 5 Storeys	TOTAL 22 No. UNITS
1 BED APARTMENTS	09 No. UNITS
2 BED APARTMENTS (3 PERSON)	00 No. UNITS
2 BED APARTMENTS (4 PERSON)	09 No. UNITS
3 BED APARTMENTS	04 No. UNITS

BLOCK C - 6 Storeys	TOTAL 29 No. UNITS
1 BED APARTMENTS	13 No. UNITS
2 BED APARTMENTS (3 PERSON)	00 No. UNITS
2 BED APARTMENTS (4 PERSON)	16 No. UNITS
3 BED APARTMENTS	00 No. UNITS

BLOCK D - 6 Storeys	TOTAL 29 No. UNITS
1 BED APARTMENTS	17 No. UNITS
2 BED APARTMENTS (3 PERSON)	01 No. UNITS
2 BED APARTMENTS (4 PERSON)	11 No. UNITS
3 BED APARTMENTS	00 No. UNITS

TOTAL No. APARTMENTS	130 No. UNITS
1 BED APARTMENTS	61 No. UNITS (47%)
2 BED APARTMENTS (3 PERSON)	03 No. UNITS (2%)
2 BED APARTMENTS (4 PERSON)	56 No. UNITS (43%)
3 BED APARTMENTS	10 No. UNITS (8%)



LEGEND - ADDITIONAL AREA

PROPOSED EXTENSION TO BLOCK A: [Purple dashed line]

PROPOSED ADDITIONAL FLOOR TO BLOCK A, B & C: [Orange dashed line]

PREVIOUS LOCATION OF TELECOM MAST: [Grey dashed line]

GROSS FLOOR AREA, FIFTH FLOOR 1027.2 sqm

LEGEND - DUAL ASPECT

SINGLE ASPECT UNITS: [Green square] 51 No. UNITS

DUAL ASPECT UNITS: [Light green square] 79 No. UNITS

TOTAL APARTMENTS 130 No. UNITS

OVERALL DUAL ASPECT 61%

BLOCK B					
TYPE I - UNITS 01B,03B,08B,13B,18B - 2 Bed.(4 person)					
	Total Floor Area	Living/Dining Kitchen Area	Aggregate Bedroom Area	Storage Area	Private Amenity Area
Required	73 sqm	30 sqm	24.4 sqm	6 sqm	7 sqm
Proposed	76 sqm	31 sqm	25.6 sqm	6 sqm	9 sqm
TYPE J - UNITS 02B,04B,09B,14B,19B-1 Bed.(2 person)					
	Total Floor Area	Living/Dining Kitchen Area	Aggregate Bedroom Area	Storage Area	Private Amenity Area
Required	45 sqm	23 sqm	11.4 sqm	3 sqm	5 sqm
Proposed	53-54 sqm	32-33 sqm	11.5 sqm	3 sqm	7 sqm
TYPE P - UNITS 05B-1 Bed.(2 person)					
	Total Floor Area	Living/Dining Kitchen Area	Aggregate Bedroom Area	Storage Area	Private Amenity Area
Required	45 sqm	23 sqm	11.4 sqm	3 sqm	5 sqm
Proposed	52 sqm	27.6 sqm	11.4 sqm	3 sqm	7 sqm
TYPE Q - UNITS 06B - 2 Bed.(4 person)					
	Total Floor Area	Living/Dining Kitchen Area	Aggregate Bedroom Area	Storage Area	Private Amenity Area
Required	73 sqm	30 sqm	24.4 sqm	6 sqm	7 sqm
Proposed	78 sqm	30 sqm	25.4 sqm	6 sqm	7 sqm
TYPE P - UNITS 10B,15B,20B-1 Bed.(2 person)					
	Total Floor Area	Living/Dining Kitchen Area	Aggregate Bedroom Area	Storage Area	Private Amenity Area
Required	45 sqm	23 sqm	11.4 sqm	3 sqm	5 sqm
Proposed	52 sqm	27.6 sqm	11.4 sqm	3 sqm	6 sqm
TYPE Q - UNITS 11B,16B,21B - 2 Bed.(4 person)					
	Total Floor Area	Living/Dining Kitchen Area	Aggregate Bedroom Area	Storage Area	Private Amenity Area
Required	73 sqm	30 sqm	24.4 sqm	6 sqm	7 sqm
Proposed	78 sqm	30 sqm	24.4 sqm	6 sqm	8 sqm
TYPE R - UNITS 07B,12B,17B,22B- 3 Bed.(5 person)					
	Total Floor Area	Living/Dining Kitchen Area	Aggregate Bedroom Area	Storage Area	Private Amenity Area
Required	90 sqm	34 sqm	31.5 sqm	9 sqm	9 sqm
Proposed	96 sqm	37 sqm	34 sqm	9 sqm	11 sqm
BLOCK C					
TYPE K - UNITS 01C - 2 Bed.(4 person)					
	Total Floor Area	Living/Dining Kitchen Area	Aggregate Bedroom Area	Storage Area	Private Amenity Area
Required	73 sqm	30 sqm	24.4 sqm	6 sqm	7 sqm
Proposed	83 sqm	39 sqm	25 sqm	6.4 sqm	9 sqm
TYPE L - UNITS 02C-1 Bed.(2 person)					
	Total Floor Area	Living/Dining Kitchen Area	Aggregate Bedroom Area	Storage Area	Private Amenity Area
Required	45 sqm	23 sqm	11.4 sqm	3 sqm	5 sqm
Proposed	47 sqm	23.5 sqm	11.4 sqm	3 sqm	10 sqm
TYPE M - UNITS 03C-1 Bed.(2 person)					
	Total Floor Area	Living/Dining Kitchen Area	Aggregate Bedroom Area	Storage Area	Private Amenity Area
Required	45 sqm	23 sqm	11.4 sqm	3 sqm	5 sqm
Proposed	49 sqm	24 sqm	11.4 sqm	3 sqm	14 sqm
TYPE N - UNITS 04C-1 Bed.(2 person)					
	Total Floor Area	Living/Dining Kitchen Area	Aggregate Bedroom Area	Storage Area	Private Amenity Area
Required	45 sqm	23 sqm	11.4 sqm	3 sqm	5 sqm
Proposed	49 sqm	23 sqm	12.5 sqm	3 sqm	12 sqm
TYPE S - UNITS 05C,10C,15C,20C,25C - 2 Bed.(4 person)					
	Total Floor Area	Living/Dining Kitchen Area	Aggregate Bedroom Area	Storage Area	Private Amenity Area
Required	73 sqm	30 sqm	24.4 sqm	6 sqm	7 sqm
Proposed	80 sqm	32.6 sqm	24.6 sqm	6 sqm	9 sqm
TYPE T - UNITS 06C,11C,16C,21C,26C - 2 Bed.(4 person)					
	Total Floor Area	Living/Dining Kitchen Area	Aggregate Bedroom Area	Storage Area	Private Amenity Area
Required	73 sqm	30 sqm	24.4 sqm	6 sqm	7 sqm
Proposed	75 sqm	31 sqm	24.4 sqm	6 sqm	10 sqm
TYPE U - UNITS 07C,12C,17C,22C,27C-1 Bed.(2 person)					
	Total Floor Area	Living/Dining Kitchen Area	Aggregate Bedroom Area	Storage Area	Private Amenity Area
Required	45 sqm	23 sqm	11.4 sqm	3 sqm	5 sqm
Proposed	47 sqm	23 sqm	11.8 sqm	3 sqm	7 sqm
TYPE V - UNITS 08C,13C,18C,23C,28C-1 Bed.(2 person)					
	Total Floor Area	Living/Dining Kitchen Area	Aggregate Bedroom Area	Storage Area	Private Amenity Area
Required	45 sqm	23 sqm	11.4 sqm	3 sqm	5 sqm
Proposed	50 sqm	23 sqm	13 sqm	3 sqm	7 sqm
TYPE W - UNITS 09C,14C,19C,24C,29C - 2 Bed.(4 person)					
	Total Floor Area	Living/Dining Kitchen Area	Aggregate Bedroom Area	Storage Area	Private Amenity Area
Required	73 sqm	30 sqm	24.4 sqm	6 sqm	7 sqm
Proposed	75 sqm	31 sqm	27 sqm	6 sqm	12 sqm

BLOCK A					
TYPE A - UNITS 01A,02A,10A,11A,19A,20A-1 Bed.(2 person)					
	Total Floor Area	Living/Dining Kitchen Area	Aggregate Bedroom Area	Storage Area	Private Amenity Area
Required	45 sqm	23 sqm	11.4 sqm	3 sqm	5 sqm
Proposed	48 sqm	24 sqm	11.4 sqm	3 sqm	7sqm - 9 sqm
TYPE B - UNITS 03A,12A,21A,29A,37A,44A - 2 Bed.(4 person)					
	Total Floor Area	Living/Dining Kitchen Area	Aggregate Bedroom Area	Storage Area	Private Amenity Area
Required	73 sqm	30 sqm	24.4 sqm	6 sqm	7 sqm
Proposed	79 sqm	30 sqm	25 sqm	6 sqm	8 sqm
TYPE C - UNITS 04A,-1 Bed.(2 person)					
	Total Floor Area	Living/Dining Kitchen Area	Aggregate Bedroom Area	Storage Area	Private Amenity Area
Required	45 sqm	23 sqm	11.4 sqm	3 sqm	5 sqm
Proposed	49 sqm	27 sqm	12.5 sqm	3 sqm	9 sqm
TYPE D - UNITS 05A,14A,23A,31A,39A,46A-1 Bed.(2 person)					
	Total Floor Area	Living/Dining Kitchen Area	Aggregate Bedroom Area	Storage Area	Private Amenity Area
Required	45 sqm	23 sqm	11.4 sqm	3 sqm	5 sqm
Proposed	50 sqm	28 sqm	11.6 sqm	3 sqm	7 sqm
TYPE E - UNITS 06A,15A,24A,32A,40A,47A-1 Bed.(2 person)					
	Total Floor Area	Living/Dining Kitchen Area	Aggregate Bedroom Area	Storage Area	Private Amenity Area
Required	45 sqm	23 sqm	11.4 sqm	3 sqm	5 sqm
Proposed	50 sqm	25 sqm	11.5 sqm	3 sqm	7 sqm
TYPE F - UNITS 07A,16A,25A,33A,41A,48A- 3 Bed.(5 person)					
	Total Floor Area	Living/Dining Kitchen Area	Aggregate Bedroom Area	Storage Area	Private Amenity Area
Required	90 sqm	34 sqm	31.5 sqm	9 sqm	9 sqm
Proposed	99 sqm	41 sqm	31.7 sqm	9 sqm	9 sqm
TYPE G - UNITS 08A,17A,26A,34A,42A,49A - 2 Bed.(4 person)					
	Total Floor Area	Living/Dining Kitchen Area	Aggregate Bedroom Area	Storage Area	Private Amenity Area
Required	73 sqm	30 sqm	24.4 sqm	6 sqm	7 sqm
Proposed	75 sqm	31 sqm	24.7 sqm	6 sqm	9 sqm
TYPE H - UNITS 09A,18A,27A,35A,43A,50A - 2 Bed.(4 person)					
	Total Floor Area	Living/Dining Kitchen Area	Aggregate Bedroom Area	Storage Area	Private Amenity Area
Required	73 sqm	30 sqm	24.4 sqm	6 sqm	7 sqm
Proposed	79 sqm	32 sqm	24.7 sqm	6 sqm	9 sqm
TYPE O - UNITS 13A,22A-1 Bed.(2 person)					
	Total Floor Area	Living/Dining Kitchen Area	Aggregate Bedroom Area	Storage Area	Private Amenity Area
Required	45 sqm	23 sqm	11.4 sqm	3 sqm	5 sqm
Proposed	49 sqm	23.5 sqm	13 sqm	3 sqm	9 sqm
TYPE X - UNITS 28A,36A - 2 Bed.(4 person)					
	Total Floor Area	Living/Dining Kitchen Area	Aggregate Bedroom Area	Storage Area	Private Amenity Area
Required	73 sqm	30 sqm	24.4 sqm	6 sqm	7 sqm
Proposed	78 sqm	32 sqm	24.4 sqm	6 sqm	9 sqm
TYPE Y - UNITS 30A,38A - 2 Bed.(3 person)					
	Total Floor Area	Living/Dining Kitchen Area	Aggregate Bedroom Area	Storage Area	Private Amenity Area
Required	63 sqm	28 sqm	20.1 sqm	5 sqm	6 sqm
Proposed	69 sqm	28 sqm	23 sqm	5 sqm	9 sqm
TYPE Z - UNITS 45A-1 Bed.(2 person)					
	Total Floor Area	Living/Dining Kitchen Area	Aggregate Bedroom Area	Storage Area	Private Amenity Area
Required	45 sqm	23 sqm	11.4 sqm	3 sqm	5 sqm
Proposed	48 sqm	23.5 sqm	13 sqm	3 sqm	9 sqm

STAGE 03



36 Mount Street Upper, Dublin D02 Y982
 +353 1 524 0709 www.hads.ie

CLIENT
 RANDELSWOOD HOLDINGS LTD.
 PROJECT
 PROPOSED SHD DEVELOPMENT AT
 DOLCRAIN HOUSE, MONASTERY RD.
 CLONDALKIN, DUBLIN 22

DWG. TITLE
 PROPOSED FIFTH AND ROOF PLANS
 BLOCKS A-B-C

SCALE @ A1: 1:200
 DRAWN BY: DM
 CHECKED BY: JH
 PAPER SIZE: A1
 JOB NO.: 18-001
 DATE: 21.01.2022

DWG. NO.