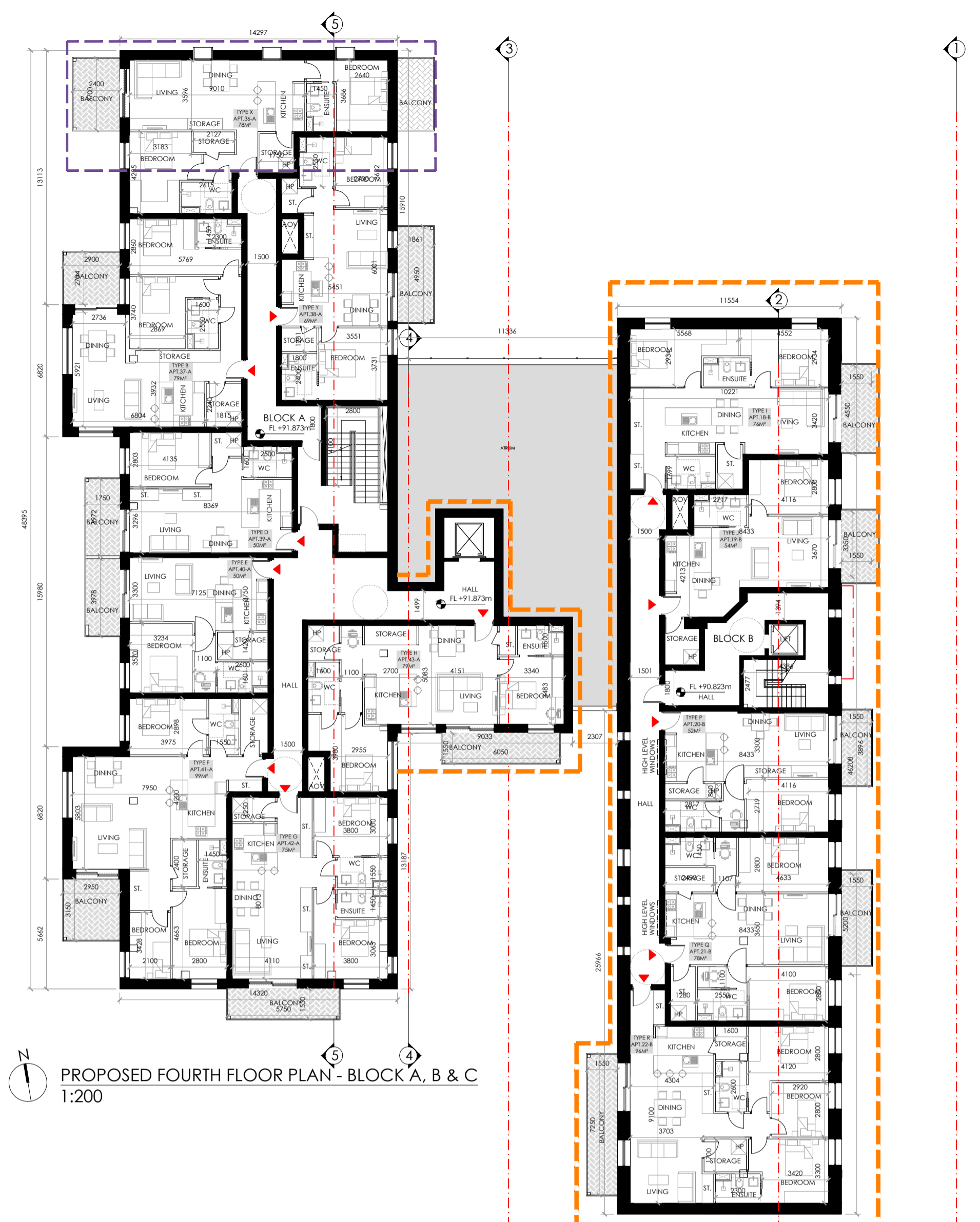
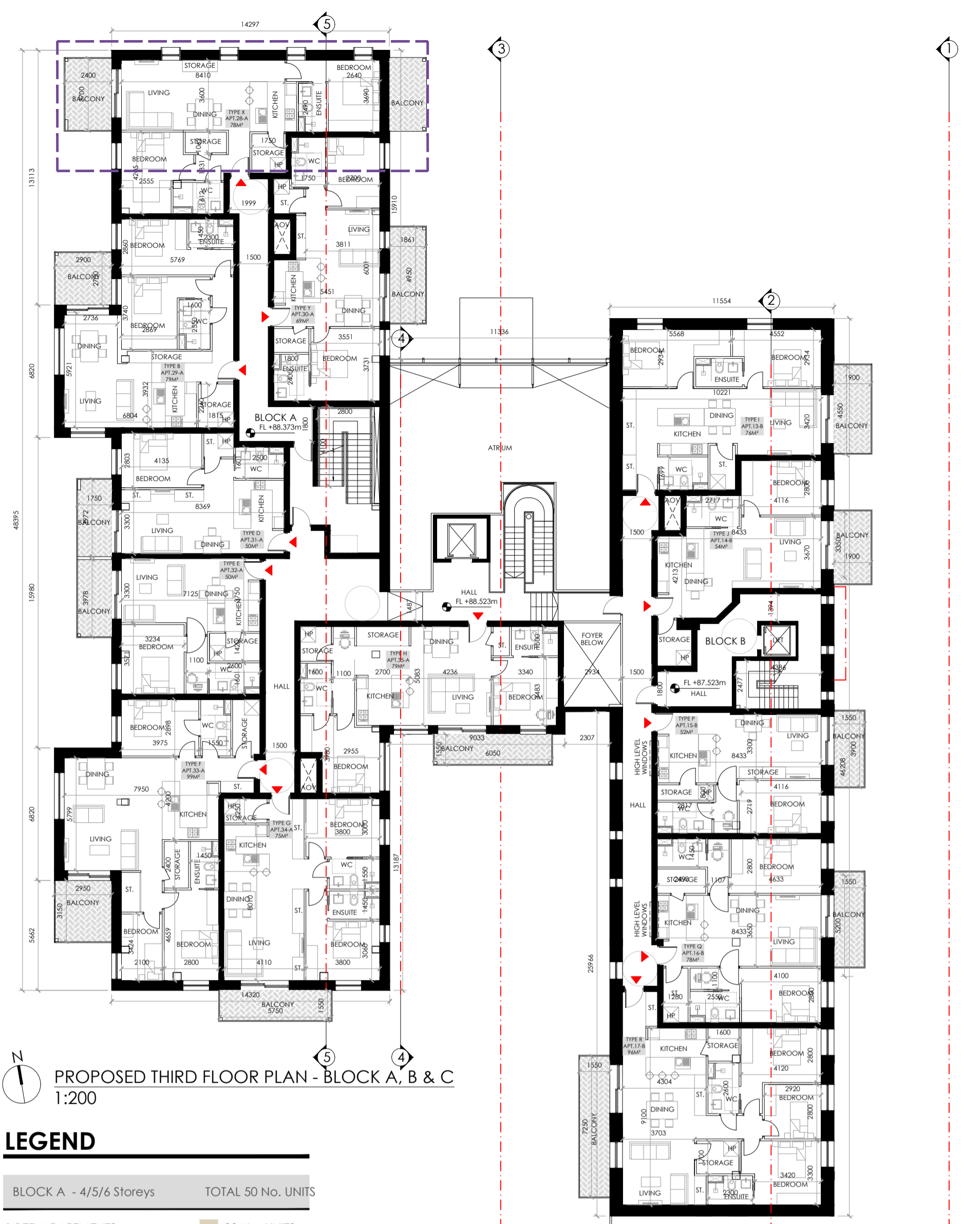


GENERAL NOTES:
 ** Do not scale from this drawing
 ** Use figured dimensions only.
 © This drawing is copyright. No part of this document may be reproduced or transmitted in any form or stored in any retrieval system from the copyright holder, except as agreed for use on a project, for which the document was originally issued.

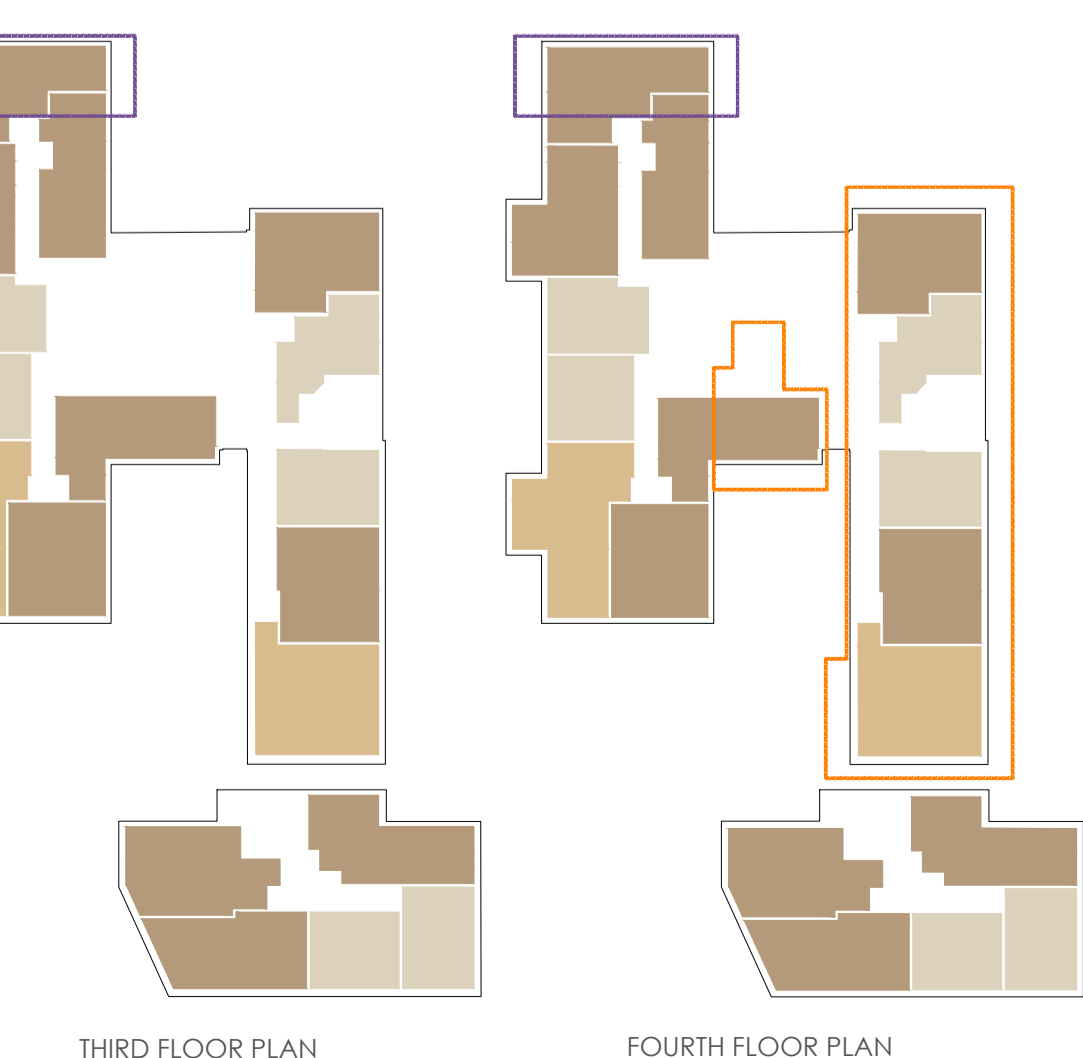
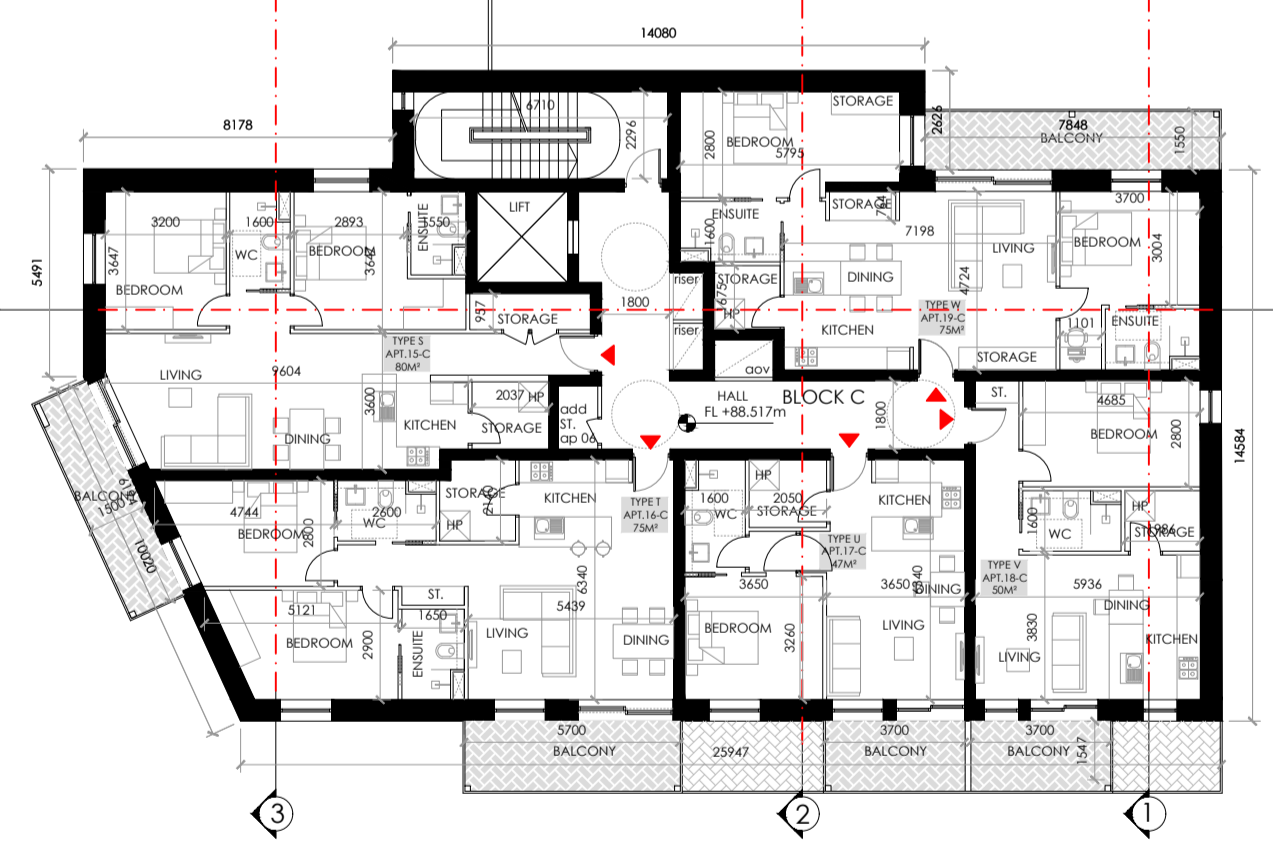


PROPOSED THIRD FLOOR PLAN - BLOCK A, B & C
 1:200

PROPOSED FOURTH FLOOR PLAN - BLOCK A, B & C
 1:200

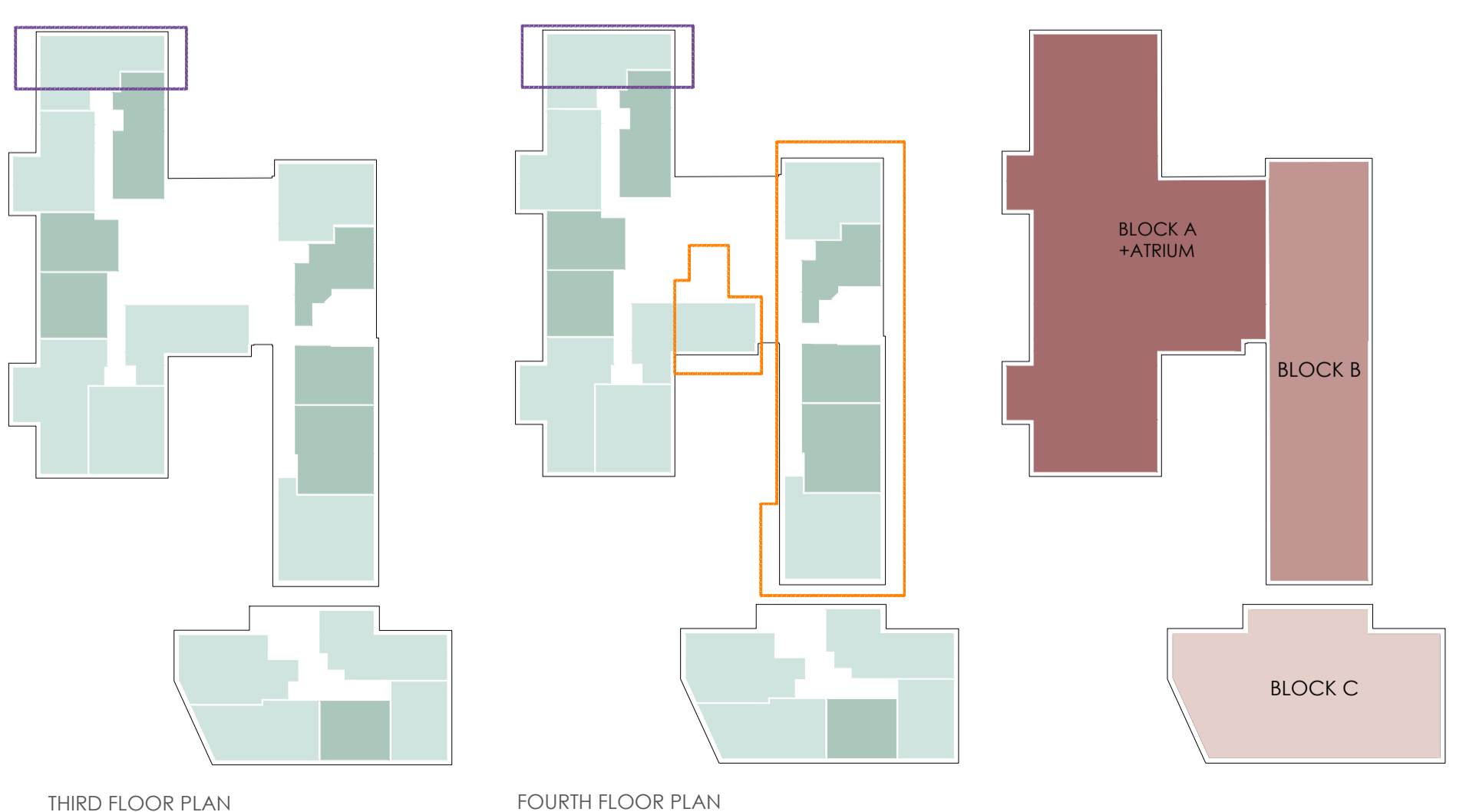
LEGEND

BLOCK A - 4/5/6 Storeys		TOTAL 50 No. UNITS
1 BED APARTMENTS	22 No. UNITS	
2 BED APARTMENTS (3 PERSON)	02 No. UNITS	
2 BED APARTMENTS (4 PERSON)	20 No. UNITS	
3 BED APARTMENTS	06 No. UNITS	
BLOCK B - 5 Storeys		TOTAL 22 No. UNITS
1 BED APARTMENTS	09 No. UNITS	
2 BED APARTMENTS (3 PERSON)	00 No. UNITS	
2 BED APARTMENTS (4 PERSON)	09 No. UNITS	
3 BED APARTMENTS	04 No. UNITS	
BLOCK C - 6 Storeys		TOTAL 29 No. UNITS
1 BED APARTMENTS	13 No. UNITS	
2 BED APARTMENTS (3 PERSON)	00 No. UNITS	
2 BED APARTMENTS (4 PERSON)	16 No. UNITS	
3 BED APARTMENTS	00 No. UNITS	
BLOCK D - 6 Storeys		TOTAL 29 No. UNITS
1 BED APARTMENTS	17 No. UNITS	
2 BED APARTMENTS (3 PERSON)	01 No. UNITS	
2 BED APARTMENTS (4 PERSON)	11 No. UNITS	
3 BED APARTMENTS	00 No. UNITS	
TOTAL No. APARTMENTS	130 No. UNITS	
1 BED APARTMENTS	61 No. UNITS (47%)	
2 BED APARTMENTS (3 PERSON)	03 No. UNITS (2%)	
2 BED APARTMENTS (4 PERSON)	56 No. UNITS (43%)	
3 BED APARTMENTS	10 No. UNITS (8%)	
LEGEND - DUAL ASPECT		
SINGLE ASPECT UNITS	51 No. UNITS	
DUAL ASPECT UNITS	79 No. UNITS	
TOTAL APARTMENTS	130 No. UNITS	
OVERALL DUAL ASPECT	61%	



LEGEND - ADDITIONAL AREA

PROPOSED EXTENSION TO BLOCK A	---
PROPOSED ADDITIONAL FLOOR TO BLOCK A, B & C	---
GROSS FLOOR AREA_ THIRD FLOOR	1644.6 sqm
GROSS FLOOR AREA_ FOURTH FLOOR	1597.1 sqm



BLOCK B					
TYPE I - UNITS 01B,03B,08B,13B,18B - 2 Bed.(4 person)					
	Total Floor Area	Living/Dining Kitchen Area	Aggregate Bedroom Area	Storage Area	Private Amenity Area
Required	73 sqm	30 sqm	24.4 sqm	6 sqm	7 sqm
Proposed	76 sqm	31 sqm	25.6 sqm	6 sqm	9 sqm
TYPE J - UNITS 02B,04B,09B,14B,19B-1 Bed.(2 person)					
	Total Floor Area	Living/Dining Kitchen Area	Aggregate Bedroom Area	Storage Area	Private Amenity Area
Required	45 sqm	23 sqm	11.4 sqm	3 sqm	5 sqm
Proposed	53-54 sqm	32-33 sqm	11.5 sqm	3 sqm	7 sqm
TYPE P - UNITS 05B-1 Bed.(2 person)					
	Total Floor Area	Living/Dining Kitchen Area	Aggregate Bedroom Area	Storage Area	Private Amenity Area
Required	45 sqm	23 sqm	11.4 sqm	3 sqm	5 sqm
Proposed	52 sqm	27.6 sqm	11.4 sqm	3 sqm	/
TYPE Q - UNITS 06B- 2 Bed.(4 person)					
	Total Floor Area	Living/Dining Kitchen Area	Aggregate Bedroom Area	Storage Area	Private Amenity Area
Required	73 sqm	30 sqm	24.4 sqm	6 sqm	7 sqm
Proposed	78 sqm	30 sqm	25.4 sqm	6 sqm	/
TYPE P - UNITS 10B,15B,20B-1 Bed.(2 person)					
	Total Floor Area	Living/Dining Kitchen Area	Aggregate Bedroom Area	Storage Area	Private Amenity Area
Required	45 sqm	23 sqm	11.4 sqm	3 sqm	5 sqm
Proposed	52 sqm	27.6 sqm	11.4 sqm	3 sqm	6 sqm
TYPE Q - UNITS 11B,16B,21B - 2 Bed.(4 person)					
	Total Floor Area	Living/Dining Kitchen Area	Aggregate Bedroom Area	Storage Area	Private Amenity Area
Required	73 sqm	30 sqm	24.4 sqm	6 sqm	7 sqm
Proposed	78 sqm	30 sqm	24.4 sqm	6 sqm	8 sqm
TYPE R - UNITS 07B,12B,17B,22B- 3 Bed.(5 person)					
	Total Floor Area	Living/Dining Kitchen Area	Aggregate Bedroom Area	Storage Area	Private Amenity Area
Required	90 sqm	34 sqm	31.5 sqm	9 sqm	9 sqm
Proposed	96 sqm	37 sqm	34 sqm	9 sqm	11 sqm
BLOCK C					
TYPE K - UNITS 01C - 2 Bed.(4 person)					
	Total Floor Area	Living/Dining Kitchen Area	Aggregate Bedroom Area	Storage Area	Private Amenity Area
Required	73 sqm	30 sqm	24.4 sqm	6 sqm	7 sqm
Proposed	83 sqm	39 sqm	25 sqm	6.4 sqm	9 sqm
TYPE L - UNITS 02C-1 Bed.(2 person)					
	Total Floor Area	Living/Dining Kitchen Area	Aggregate Bedroom Area	Storage Area	Private Amenity Area
Required	45 sqm	23 sqm	11.4 sqm	3 sqm	5 sqm
Proposed	47 sqm	23.5 sqm	11.4 sqm	3 sqm	10 sqm
TYPE M - UNITS 03C-1 Bed.(2 person)					
	Total Floor Area	Living/Dining Kitchen Area	Aggregate Bedroom Area	Storage Area	Private Amenity Area
Required	45 sqm	23 sqm	11.4 sqm	3 sqm	5 sqm
Proposed	49 sqm	24 sqm	11.4 sqm	3 sqm	14 sqm
TYPE N - UNITS 04C-1 Bed.(2 person)					
	Total Floor Area	Living/Dining Kitchen Area	Aggregate Bedroom Area	Storage Area	Private Amenity Area
Required	45 sqm	23 sqm	11.4 sqm	3 sqm	5 sqm
Proposed	49 sqm	23 sqm	12.5 sqm	3 sqm	12 sqm
TYPE S - UNITS 05C,10C,15C,20C,25C - 2 Bed.(4 person)					
	Total Floor Area	Living/Dining Kitchen Area	Aggregate Bedroom Area	Storage Area	Private Amenity Area
Required	73 sqm	30 sqm	24.4 sqm	6 sqm	7 sqm
Proposed	80 sqm	32.6 sqm	24.6 sqm	6 sqm	9 sqm
TYPE T - UNITS 06C,11C,16C,21C,26C - 2 Bed.(4 person)					
	Total Floor Area	Living/Dining Kitchen Area	Aggregate Bedroom Area	Storage Area	Private Amenity Area
Required	73 sqm	30 sqm	24.4 sqm	6 sqm	7 sqm
Proposed	75 sqm	31 sqm	24.4 sqm	6 sqm	10 sqm
TYPE U - UNITS 07C,12C,17C,22C,27C-1 Bed.(2 person)					
	Total Floor Area	Living/Dining Kitchen Area	Aggregate Bedroom Area	Storage Area	Private Amenity Area
Required	45 sqm	23 sqm	11.4 sqm	3 sqm	5 sqm
Proposed	47 sqm	23 sqm	11.8 sqm	3 sqm	7 sqm
TYPE V - UNITS 08C,13C,18C,23C,28C-1 Bed.(2 person)					
	Total Floor Area	Living/Dining Kitchen Area	Aggregate Bedroom Area	Storage Area	Private Amenity Area
Required	45 sqm	23 sqm	11.4 sqm	3 sqm	5 sqm
Proposed	50 sqm	23 sqm	13 sqm	3 sqm	7 sqm
TYPE W - UNITS 09C,14C,19C,24C,29C - 2 Bed.(4 person)					
	Total Floor Area	Living/Dining Kitchen Area	Aggregate Bedroom Area	Storage Area	Private Amenity Area
Required	73 sqm	30 sqm	24.4 sqm	6 sqm	7 sqm
Proposed	75 sqm	31 sqm	27 sqm	6 sqm	12 sqm

BLOCK A					
TYPE A - UNITS 01A,02A,10A,11A,19A,20A-1 Bed.(2 person)					
	Total Floor Area	Living/Dining Kitchen Area	Aggregate Bedroom Area	Storage Area	Private Amenity Area
Required	45 sqm	23 sqm	11.4 sqm	3 sqm	5 sqm
Proposed	48 sqm	24 sqm	11.4 sqm	3 sqm	7sqm - 9 sqm
TYPE B - UNITS 03A,12A,21A,29A,37A,44A - 2 Bed.(4 person)					
	Total Floor Area	Living/Dining Kitchen Area	Aggregate Bedroom Area	Storage Area	Private Amenity Area
Required	73 sqm	30 sqm	24.4 sqm	6 sqm	7 sqm
Proposed	79 sqm	30 sqm	25 sqm	6 sqm	8 sqm
TYPE C - UNITS 04A,-1 Bed.(2 person)					
	Total Floor Area	Living/Dining Kitchen Area	Aggregate Bedroom Area	Storage Area	Private Amenity Area
Required	45 sqm	23 sqm	11.4 sqm	3 sqm	5 sqm
Proposed	49 sqm	27 sqm	11.5 sqm	3 sqm	9 sqm
TYPE D - UNITS 05A,14A,23A,31A,39A,46A-1 Bed.(2 person)					
	Total Floor Area	Living/Dining Kitchen Area	Aggregate Bedroom Area	Storage Area	Private Amenity Area
Required	45 sqm	23 sqm	11.4 sqm	3 sqm	5 sqm
Proposed	50 sqm	28 sqm	11.6 sqm	3 sqm	7 sqm
TYPE E - UNITS 06A,15A,24A,32A,40A,47A-1 Bed.(2 person)					
	Total Floor Area	Living/Dining Kitchen Area	Aggregate Bedroom Area	Storage Area	Private Amenity Area
Required	45 sqm	23 sqm	11.4 sqm	3 sqm	5 sqm
Proposed	50 sqm	25 sqm	11.5 sqm	3 sqm	7 sqm
TYPE F - UNITS 07A,16A,25A,33A,41A,48A- 3 Bed.(5 person)					
	Total Floor Area	Living/Dining Kitchen Area	Aggregate Bedroom Area	Storage Area	Private Amenity Area
Required	90 sqm	34 sqm	31.5 sqm	9 sqm	9 sqm
Proposed	99 sqm	41 sqm	31.7 sqm	9 sqm	9 sqm
TYPE G - UNITS 08A,17A,26A,34A,42A,49A - 2 Bed.(4 person)					
	Total Floor Area	Living/Dining Kitchen Area	Aggregate Bedroom Area	Storage Area	Private Amenity Area
Required	73 sqm	30 sqm	24.4 sqm	6 sqm	7 sqm
Proposed	75 sqm	31 sqm	24.7 sqm	6 sqm	9 sqm
TYPE H - UNITS 09A,18A,27A,35A,43A,50A - 2 Bed.(4 person)					
	Total Floor Area	Living/Dining Kitchen Area	Aggregate Bedroom Area	Storage Area	Private Amenity Area
Required	73 sqm	30 sqm	24.4 sqm	6 sqm	7 sqm
Proposed	79 sqm	32 sqm	24.7 sqm	6 sqm	9 sqm
TYPE O - UNITS 13A,22A-1 Bed.(2 person)					
	Total Floor Area	Living/Dining Kitchen Area	Aggregate Bedroom Area	Storage Area	Private Amenity Area
Required	45 sqm	23 sqm	11.4 sqm	3 sqm	5 sqm
Proposed	49 sqm	23.5 sqm	13 sqm	3 sqm	9 sqm
TYPE X - UNITS 28A,36A - 2 Bed.(4 person)					
	Total Floor Area	Living/Dining Kitchen Area	Aggregate Bedroom Area	Storage Area	Private Amenity Area
Required	73 sqm	30 sqm	24.4 sqm	6 sqm	7 sqm
Proposed	78 sqm	32 sqm	24.4 sqm	6 sqm	9 sqm
TYPE Y - UNITS 30A,38A - 2 Bed.(3 person)					
	Total Floor Area	Living/Dining Kitchen Area	Aggregate Bedroom Area	Storage Area	Private Amenity Area
Required	63 sqm	28 sqm	20.1 sqm	5 sqm	6 sqm
Proposed	69 sqm	28 sqm	23 sqm	5 sqm	9 sqm
TYPE Z - UNITS 45A-1 Bed.(2 person)					
	Total Floor Area	Living/Dining Kitchen Area	Aggregate Bedroom Area	Storage Area	Private Amenity Area
Required	45 sqm	23 sqm	11.4 sqm	3 sqm	5 sqm
Proposed	48 sqm	23.5 sqm	13 sqm	3 sqm	9 sqm

STAGE 03



CLIENT
 RANDELSWOOD HOLDINGS LTD.
 PROJECT
 PROPOSED SHD DEVELOPMENT AT
 DOLCRAIN HOUSE, MONASTERY RD.
 CLONDALKIN, DUBLIN 22

DWG. TITLE
 PROPOSED THIRD, FOURTH FLOOR
 PLANS BLOCKS A-B-C

SCALE @ A1: 1:200
 DRAWN BY: DH
 CHECKED BY: JH
 PAPER SIZE: A1
 JOB NO.: 18-001
 DATE: 21.01.2022