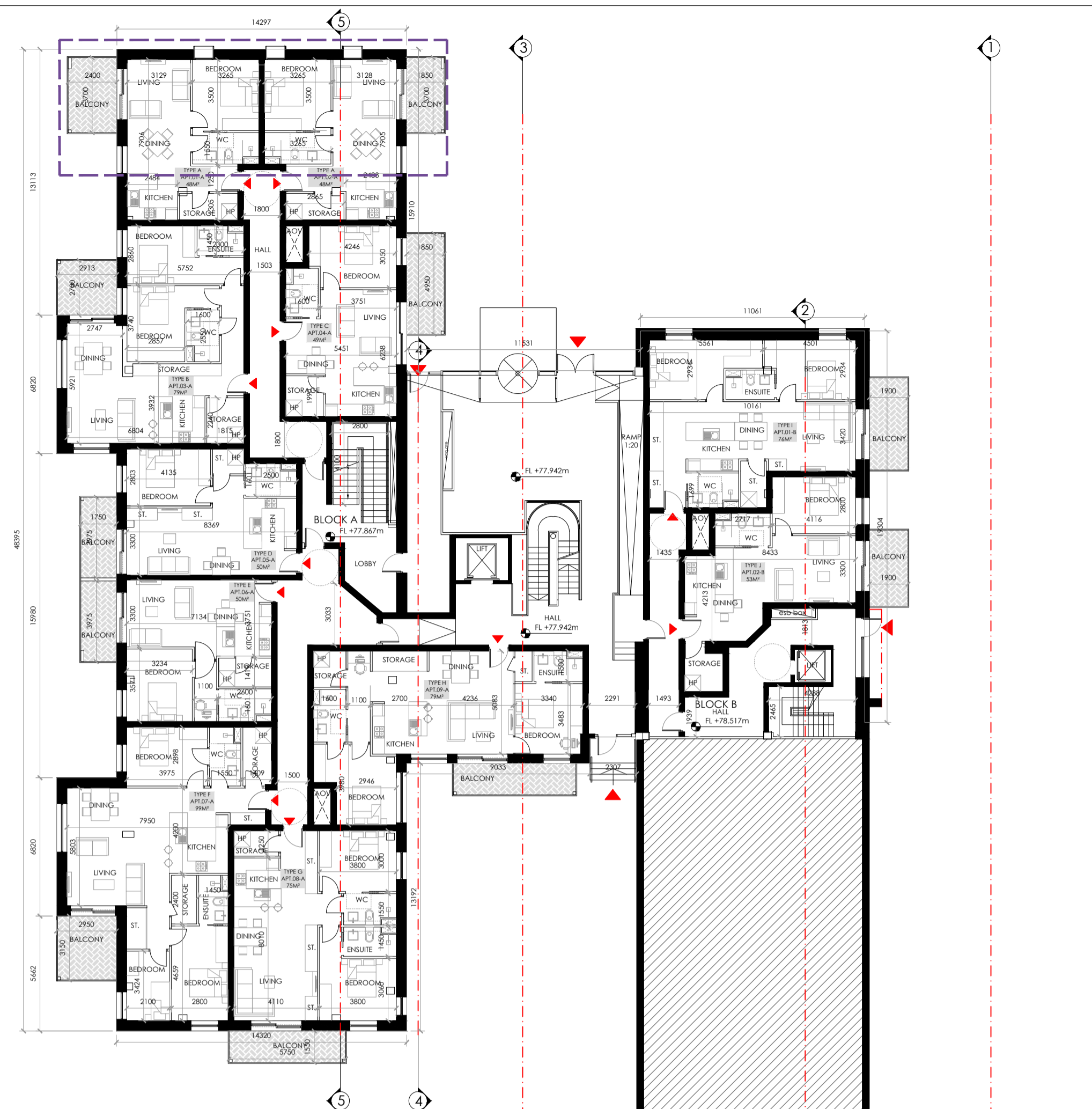
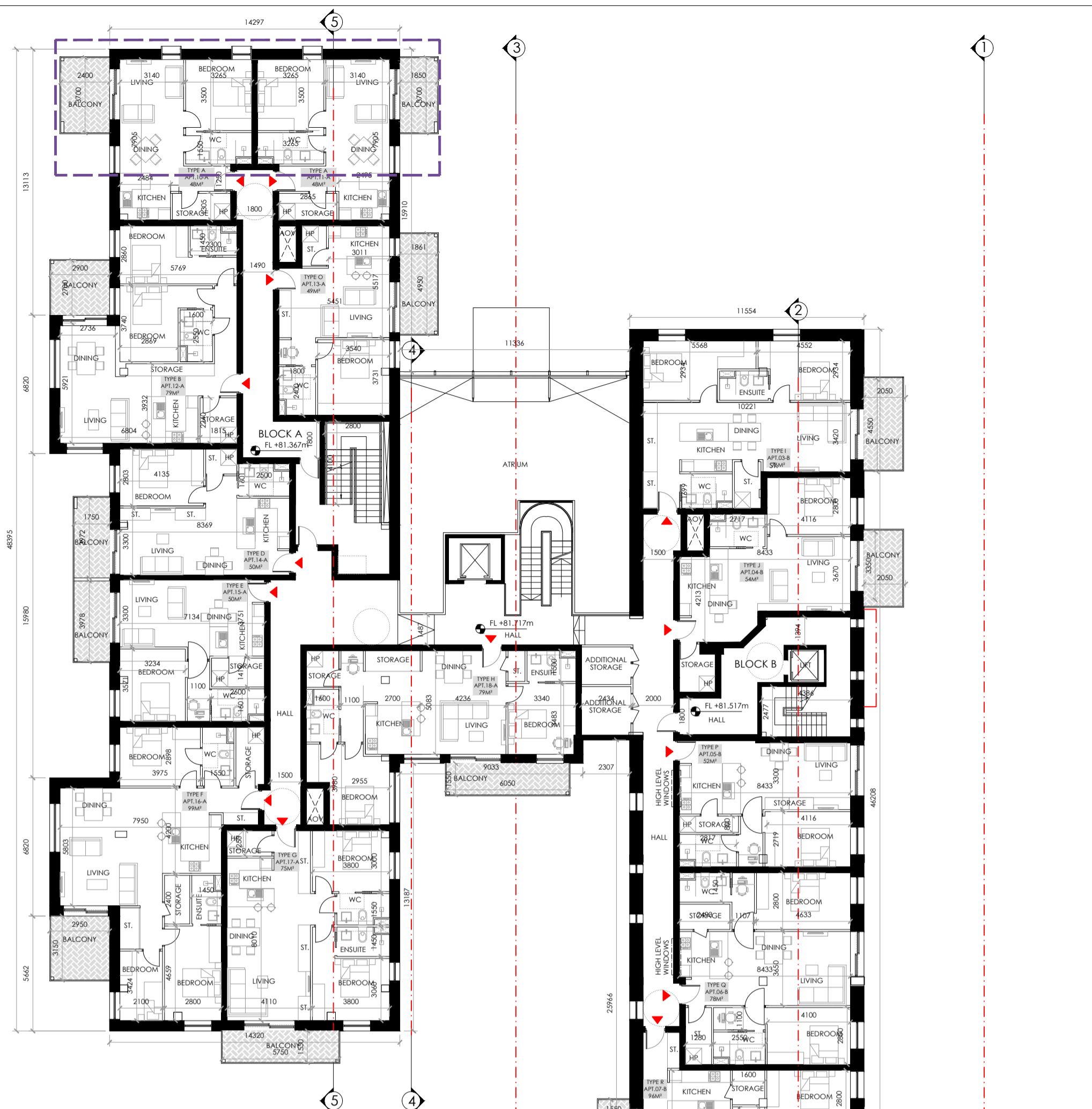


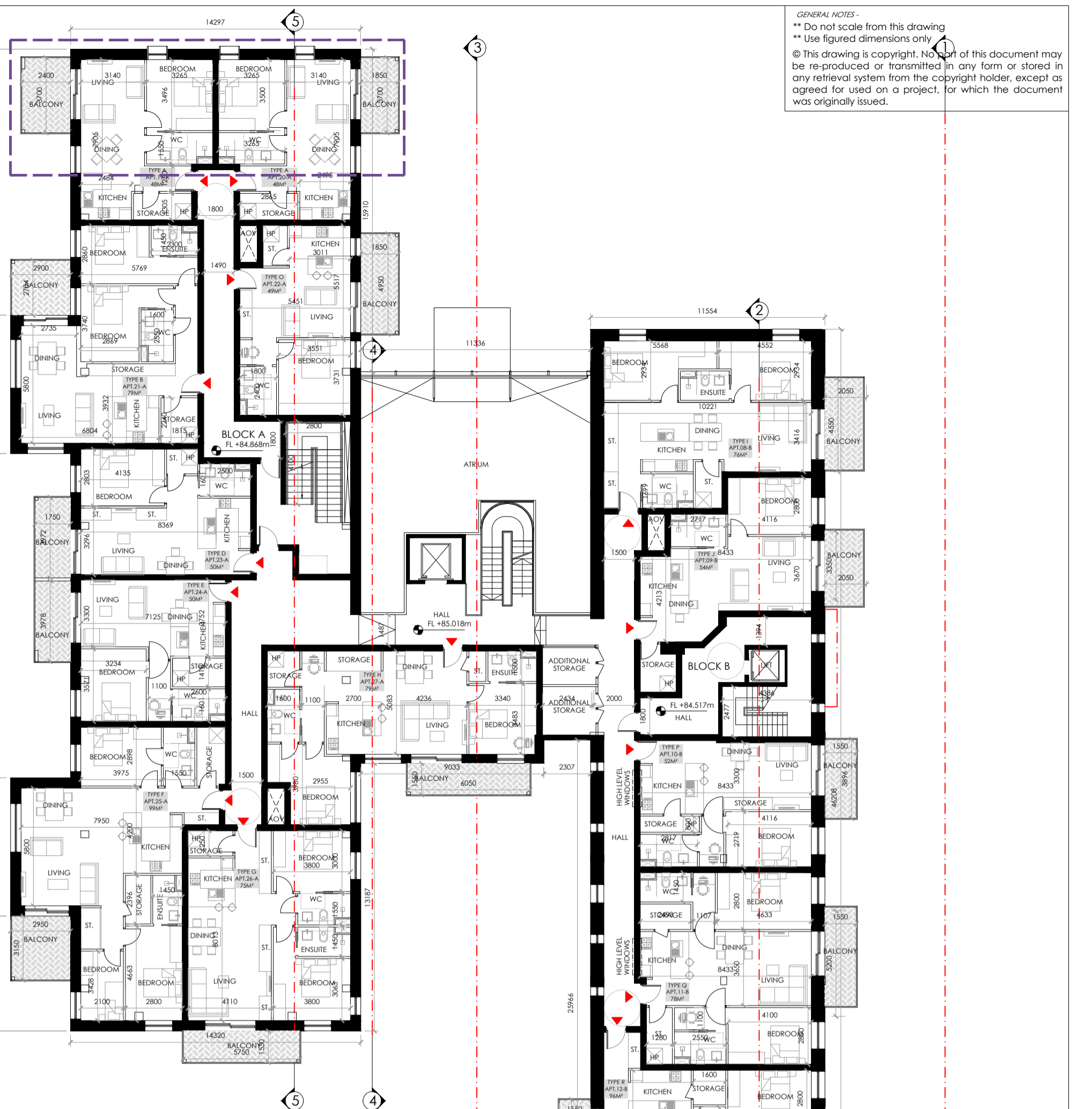
GENERAL NOTES:  
 \*\* Do not scale from this drawing  
 \*\* Use figured dimensions only  
 © This drawing is copyright. No part of this document may be re-produced or transmitted in any form or stored in any retrieval system from the copyright holder, except as agreed for use on a project, for which the document was originally issued.



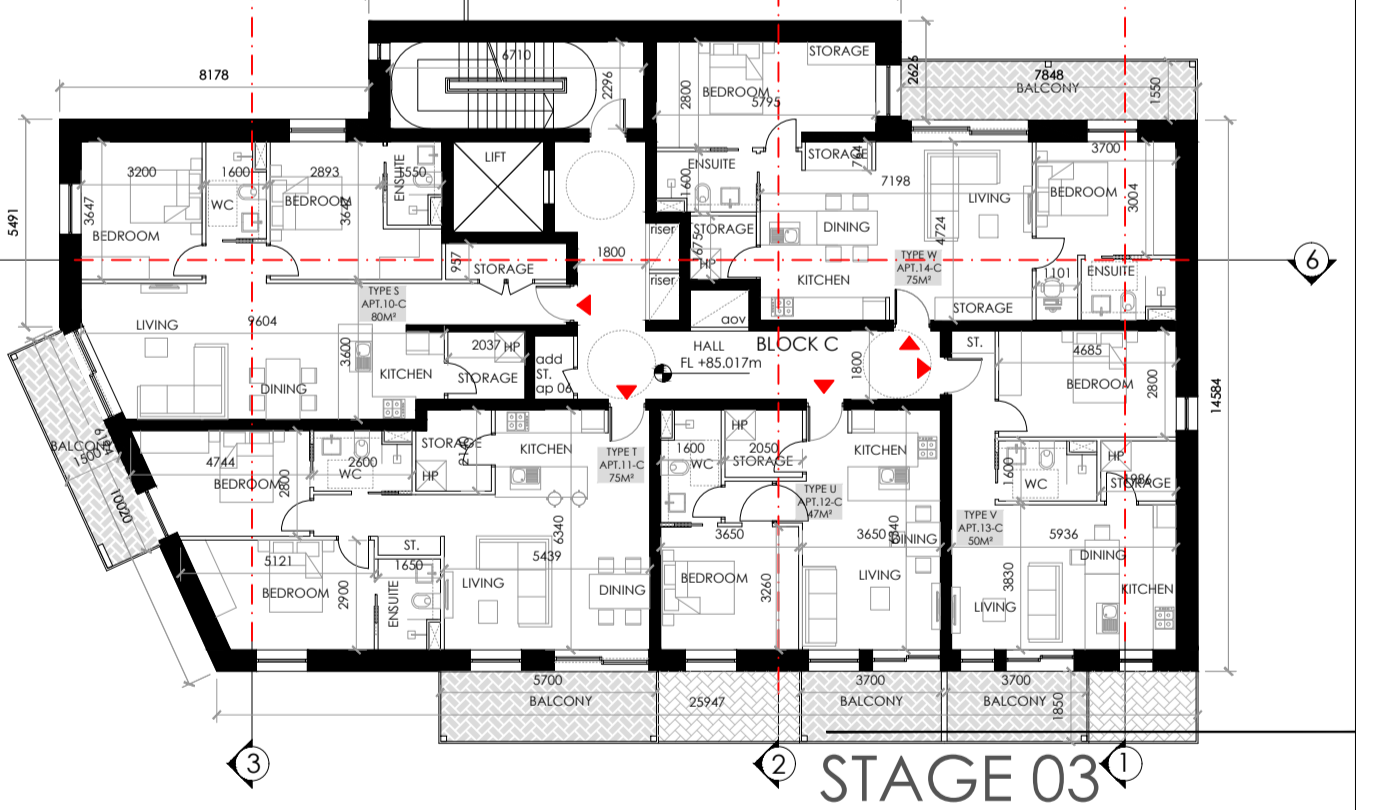
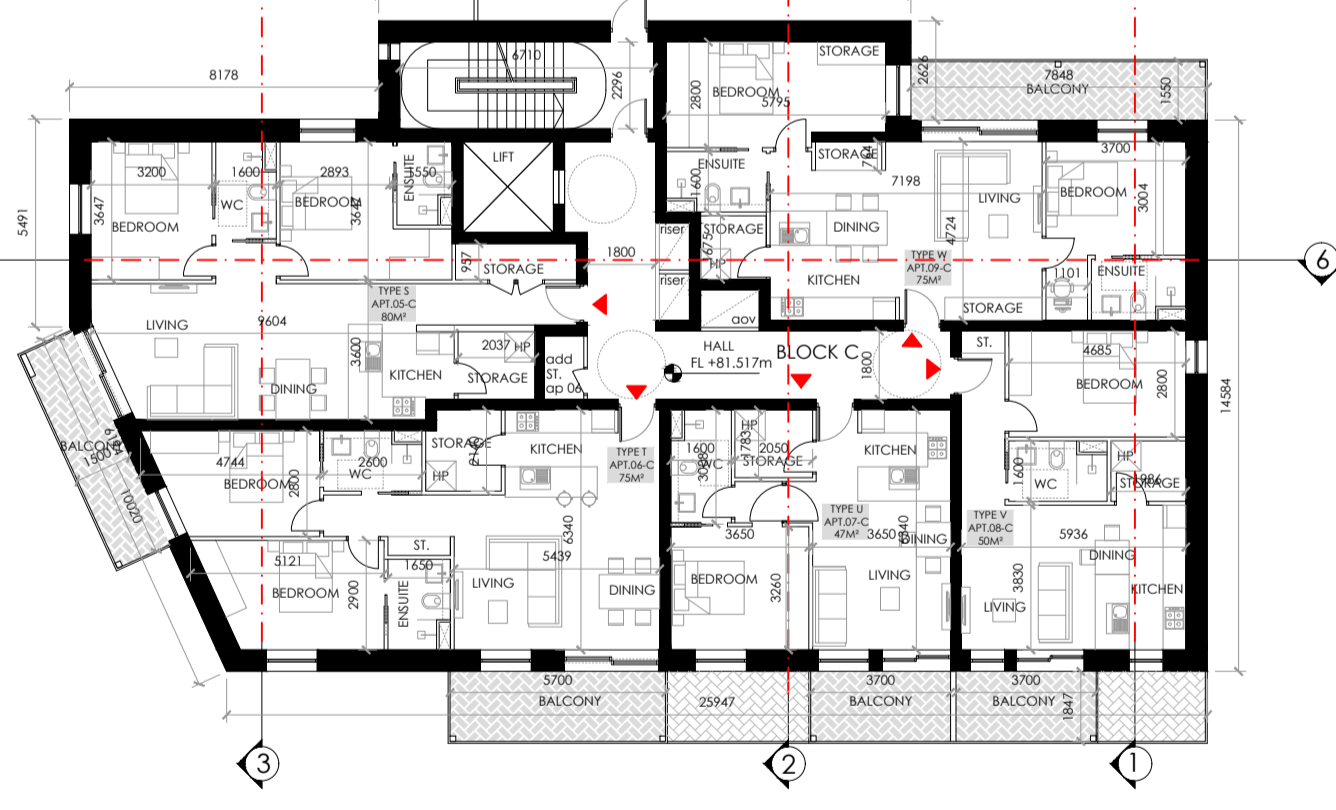
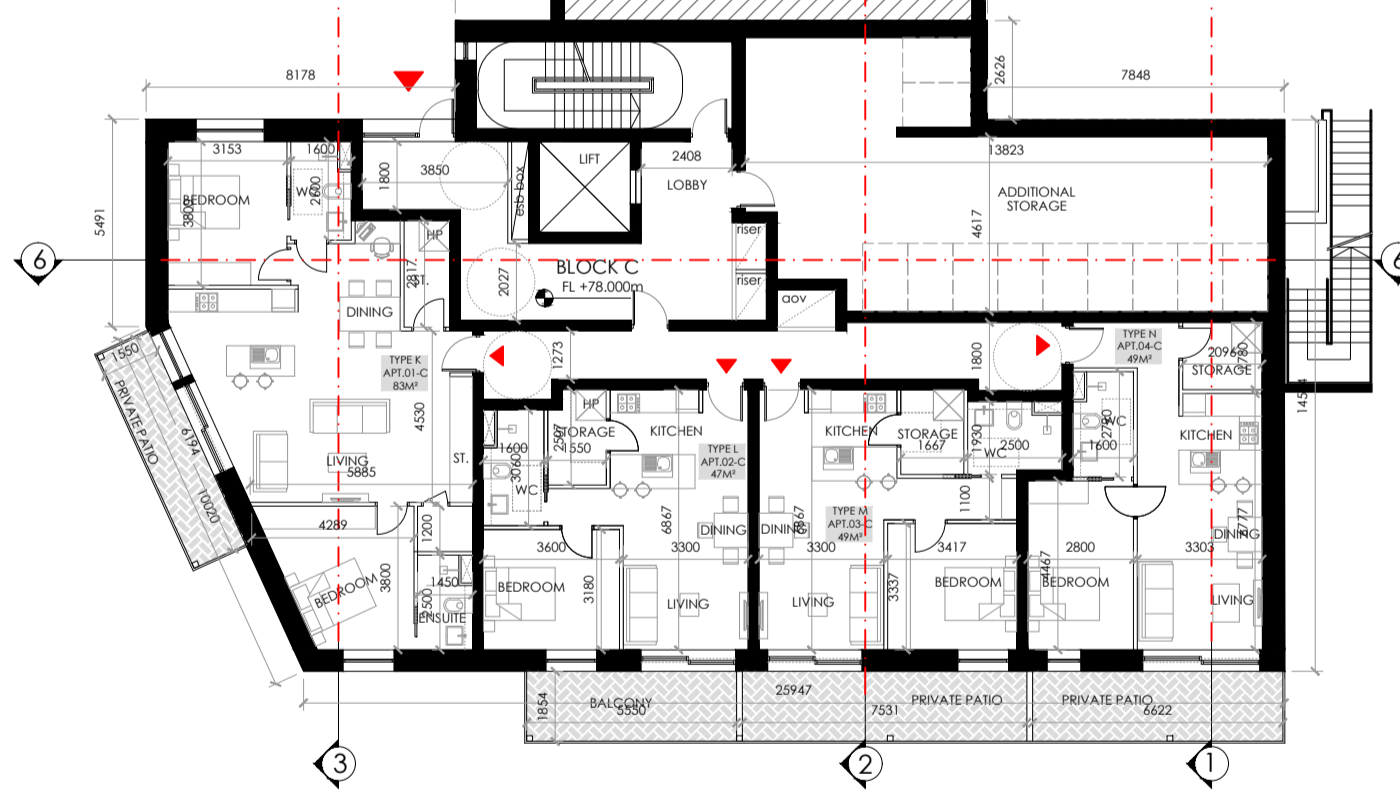
PROPOSED GROUND FLOOR PLAN - BLOCK A, B & C  
 1:200



PROPOSED FIRST FLOOR PLAN - BLOCK A, B & C  
 1:200



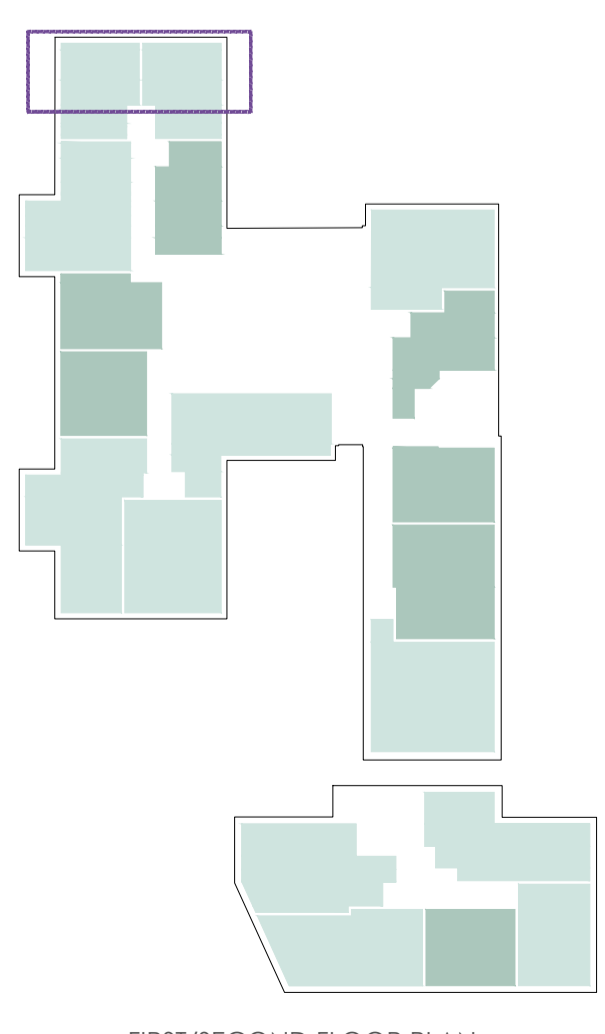
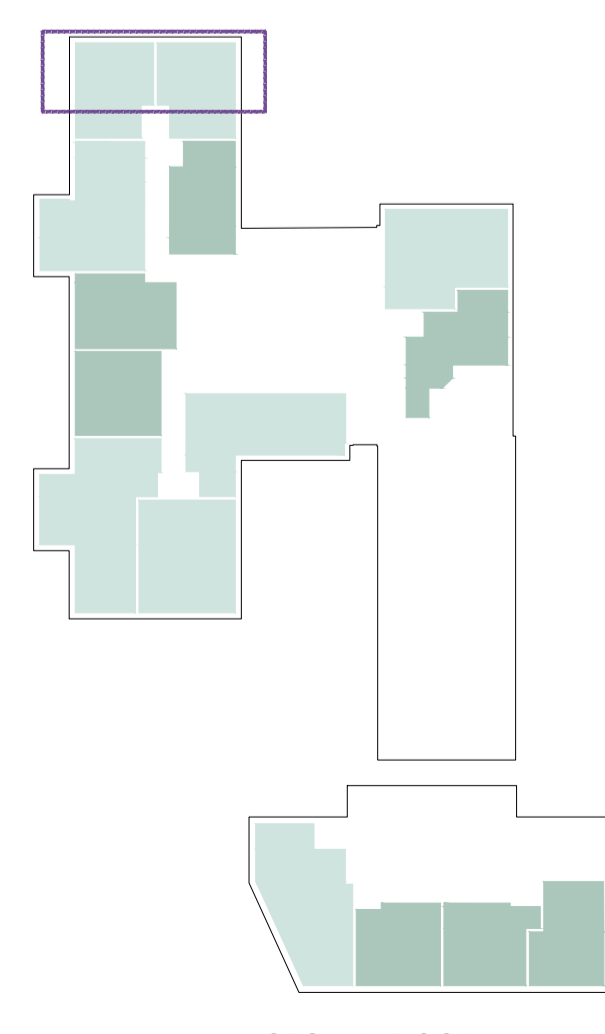
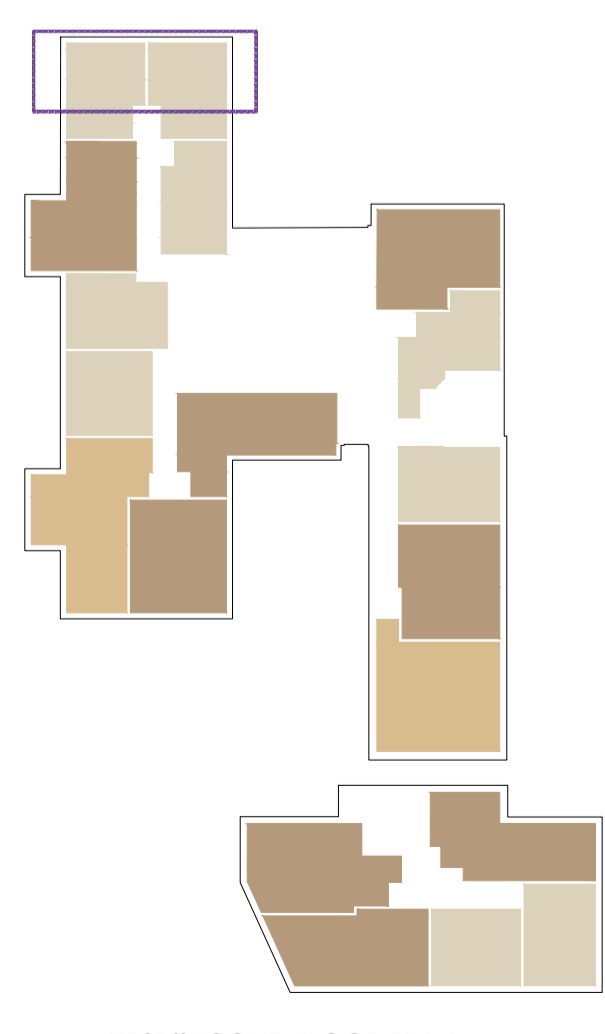
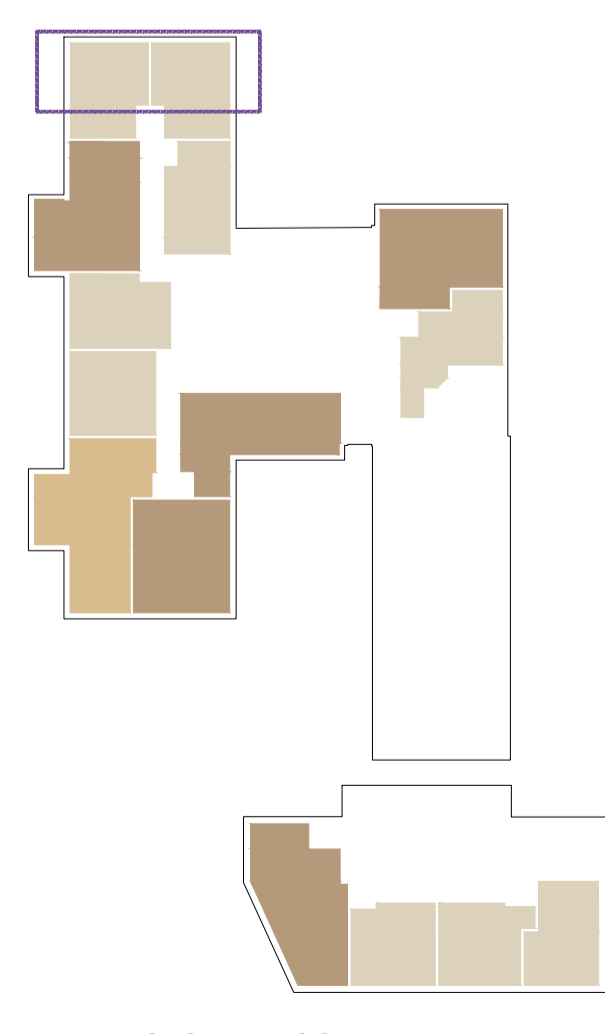
PROPOSED SECOND FLOOR PLAN - BLOCK A, B & C  
 1:200



STAGE 03

**LEGEND**

BLOCK A - 4/5/6 Storeys TOTAL 50 No. UNITS		BLOCK D - 6 Storeys TOTAL 29 No. UNITS	
1 BED APARTMENTS	22 No. UNITS	1 BED APARTMENTS	17 No. UNITS
2 BED APARTMENTS (3 PERSON)	02 No. UNITS	2 BED APARTMENTS (3 PERSON)	01 No. UNITS
2 BED APARTMENTS (4 PERSON)	20 No. UNITS	2 BED APARTMENTS (4 PERSON)	11 No. UNITS
3 BED APARTMENTS	06 No. UNITS	3 BED APARTMENTS	00 No. UNITS
BLOCK B - 5 Storeys TOTAL 22 No. UNITS		TOTAL No. APARTMENTS 130 No. UNITS	
1 BED APARTMENTS	09 No. UNITS	1 BED APARTMENTS	61 No. UNITS (47%)
2 BED APARTMENTS (3 PERSON)	00 No. UNITS	2 BED APARTMENTS (3 PERSON)	03 No. UNITS (2%)
2 BED APARTMENTS (4 PERSON)	09 No. UNITS	2 BED APARTMENTS (4 PERSON)	56 No. UNITS (43%)
3 BED APARTMENTS	04 No. UNITS	3 BED APARTMENTS	10 No. UNITS (8%)
BLOCK C - 6 Storeys TOTAL 29 No. UNITS			
1 BED APARTMENTS	13 No. UNITS		
2 BED APARTMENTS (3 PERSON)	00 No. UNITS		
2 BED APARTMENTS (4 PERSON)	16 No. UNITS		
3 BED APARTMENTS	00 No. UNITS		

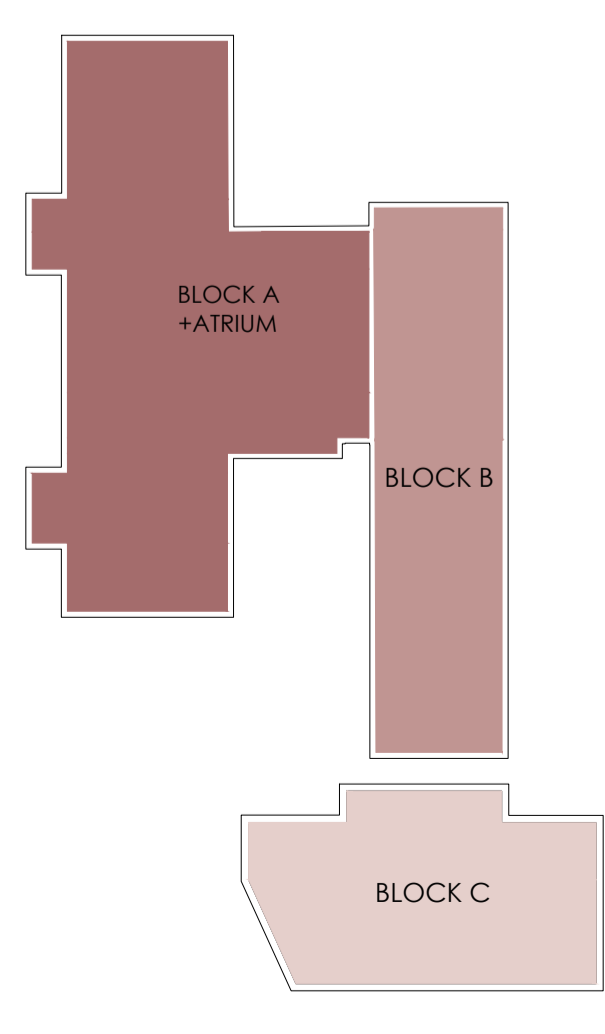


LEGEND - ADDITIONAL AREA

PROPOSED EXTENSION TO BLOCK A	
PROPOSED ADDITIONAL FLOOR TO BLOCK A, B & C	
GROSS FLOOR AREA_GROUND FLOOR	1501.5 sqm
GROSS FLOOR AREA_FIRST FLOOR	1645.6 sqm
GROSS FLOOR AREA_SECOND FLOOR	1644.6 sqm

LEGEND - DUAL ASPECT

SINGLE ASPECT UNITS	51 No. UNITS
DUAL ASPECT UNITS	79 No. UNITS
TOTAL APARTMENTS	130 No. UNITS
OVERALL DUAL ASPECT	61%



**ha**  
 DESIGN STUDIO  
 36 Mount Street Upper, Dublin D02 Y982  
 +353 1 524 0709 www.hadjs.ie

CLIENT  
 RANDELSWOOD HOLDINGS LTD.  
 PROJECT  
 PROPOSED SHD DEVELOPMENT AT DOLCAIN HOUSE, MONASTERY RD. CLONDALKIN, DUBLIN 22

DWG. TITLE  
 PROPOSED GROUND, FIRST & SECOND FLOOR PLANS BLOCKS A-B-C

SCALE @ A1: 1:200  
 DRAWN BY: DN  
 CHECKED BY: JH  
 PAPER SIZE: A1  
 JOB NO.: 18-001  
 DATE: 21.01.2022

DWG NO. PL-103