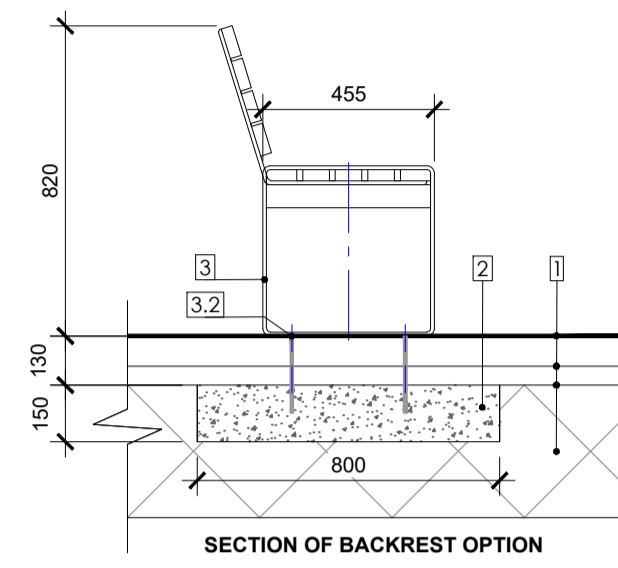
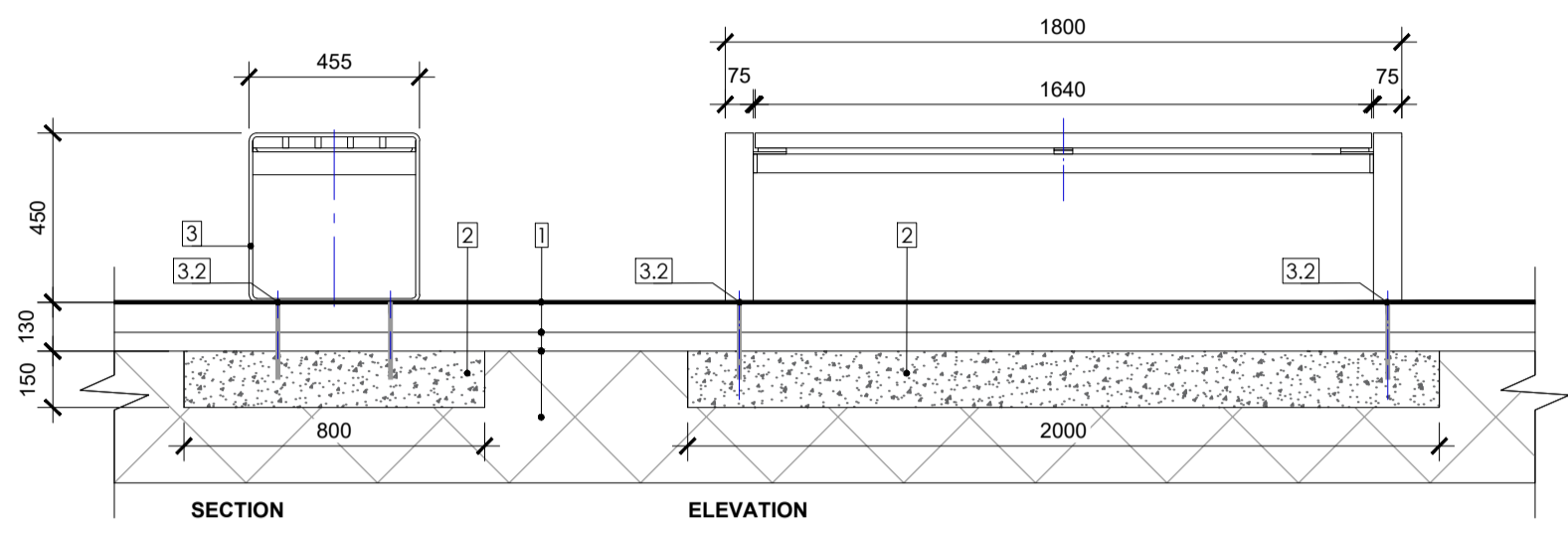
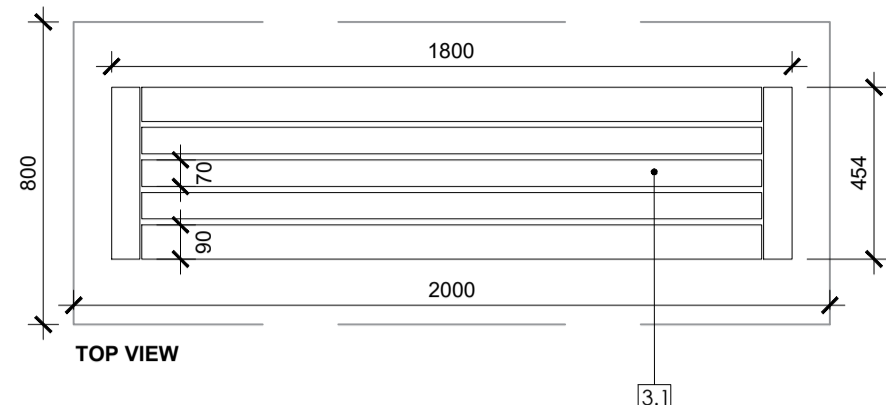


FREE STANDING BENCH TYPE 1-2
TYPICAL DETAIL
scale 1:20

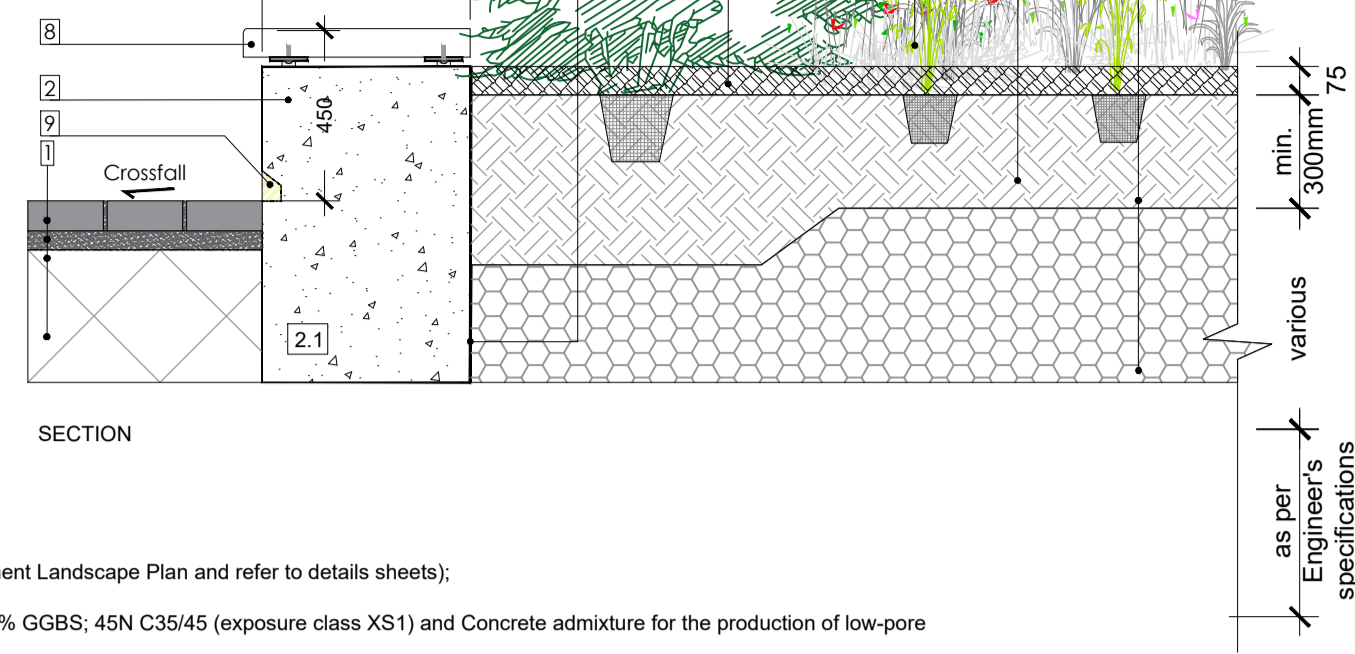
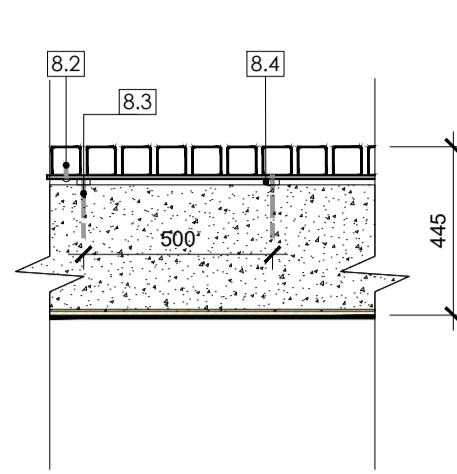
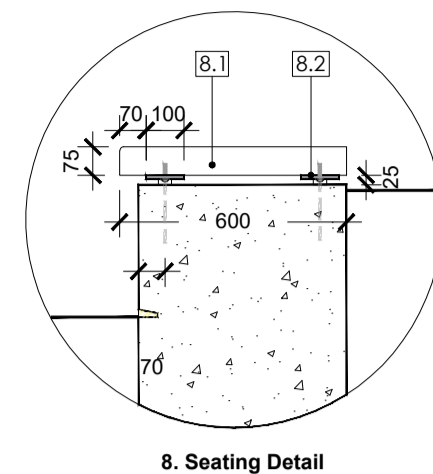
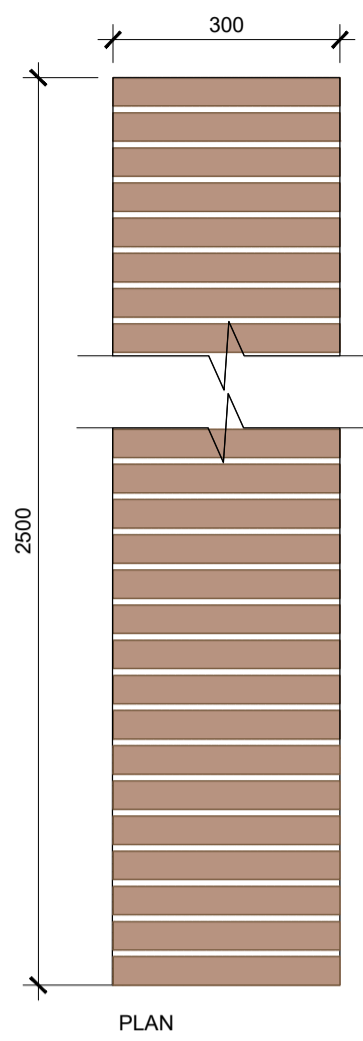
D.01
04

- Paving and Build-up as per specification.
- Cast in situ 35N20 concrete foundation under proposed surface treatment (as per Engineer's details and specifications).
- Seating, Powder coated stainless steel & recycled composite timber bench. Supplier: Hartecast (&/or similar proposed). Product: HC2033S Seat (with backrest/arm rest) and HC2033B Bench (without backrest). Dim: L1800mm, H450mm, D455mm;
 - Timber slats Dim: 70x40mm and 90x40mm;
 - Surface mounted - the supports are fitted with a stainless steel base plate with 2 fixing points.
 - Block A&B courtyard: HC2033B Bench
 - Block C&D courtyard: HC2033B and HC2033S 50/50 mixed



BESPOKE BENCH SEAT WALL
TYPICAL DETAIL
scale 1:20

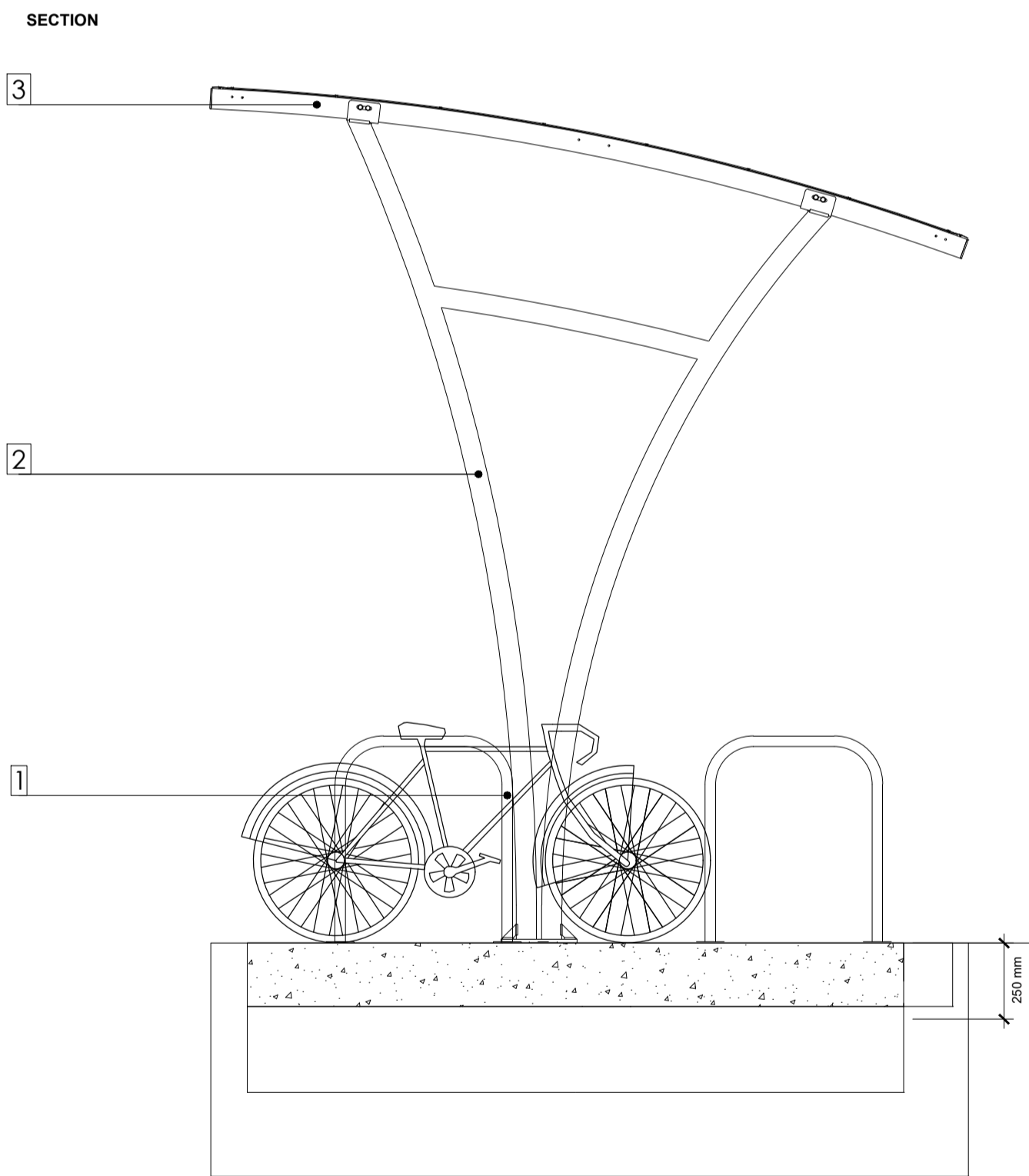
D.02
04



- Paving and Build-up as per specification (Refer to drawing 1829_PL_P for Furniture and Element Landscape Plan and refer to details sheets);
- Raised planter wall:
 - In-situ RC raised planter wall, (as per appointed Engineer's details and specifications) 50% GGBS; 45N C35/45 (exposure class XS1) and Concrete admixture for the production of low-pore concrete;
 - Reinforced concrete footing, T12 bars with cross ties @350mm c/c (as per appointed Engineer's details and specifications);
 - Bark mulch to 75mm depth;
- Refer to 1829_PL_P for Soft Landscape Plans
- Good quality multi-purpose topsoil to depths as shown and in accordance with BS 3882 (amenity grass min. 150mm, perennials and ornamental grasses min.300mm, shrubs min.450mm, trees min. 1000mm);
- Build-up as per specification as per appointed Engineer's details and specifications.
- Interior edge of raised edge to be lined with 1200 gauge Polythene DPM or other similar and approved waterproof membrane;
- Bench toping wall Bespoke bench toping wall; Material: FSC hardwood, untreated. All metalwork to be hot dipped galvanised steel (as per supplier's recommendations); dim: 12,000mm total length x 600mm width x 450mm height;
 - Timber slats, FSC hardwood, untreated. Dim: 600x75x74mm;
 - Rail system; Timber slats attached to flat steel bar rail system prior to entire system being affixed to wall
 - Steel post; welded to flat steel bar rail prior to timber slats being attached. Steel post to be affixed/motered to wall in pre-drilled holes in finished wall
 - Galvanised steel brackets/spacers;
 - Potential location for inset for lighting (per Lighting Consultants details and specifications).

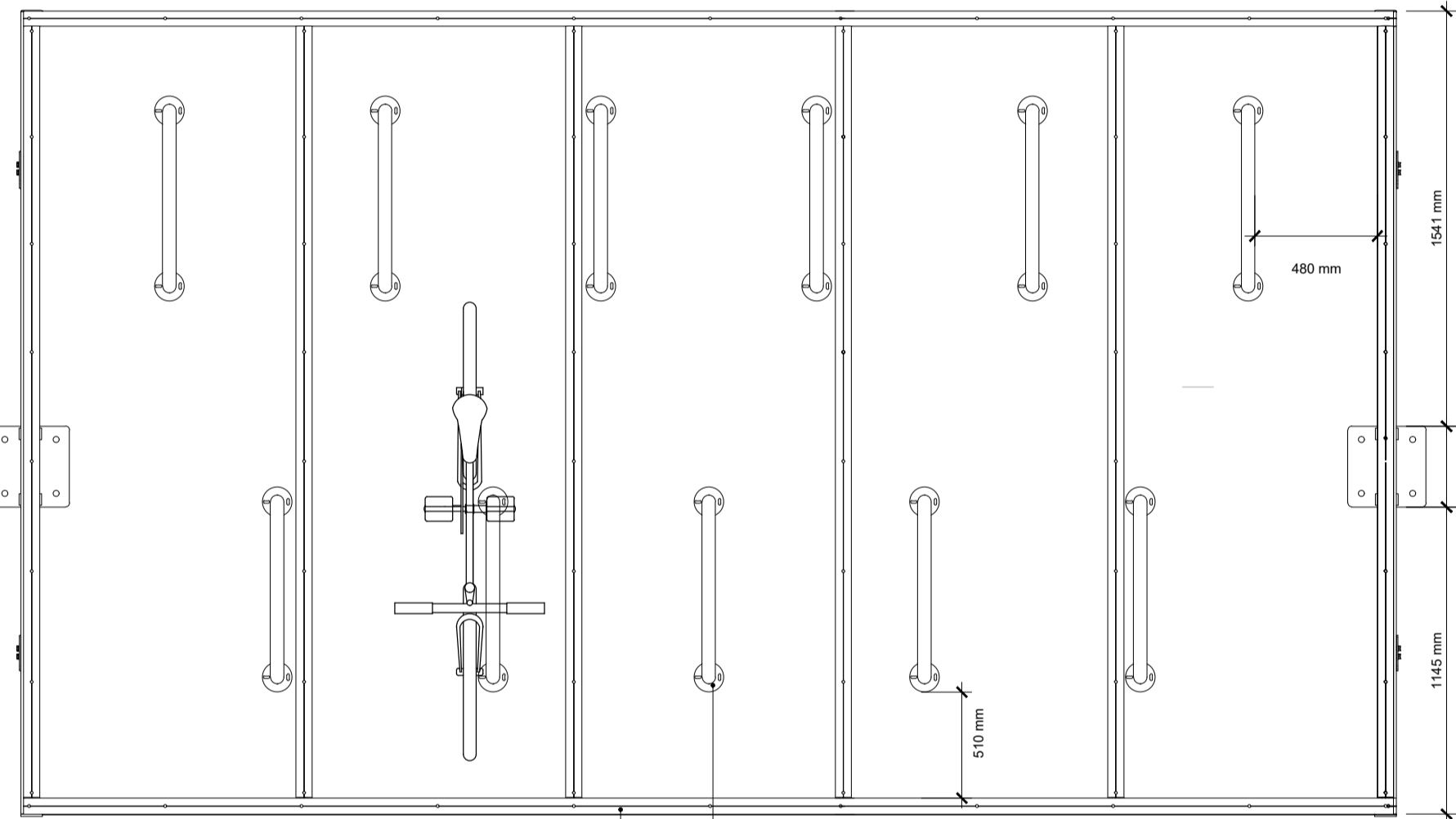
CYCLE SHELTER (5m Unit or Equal Approved)
scale 1:25

D.03
04

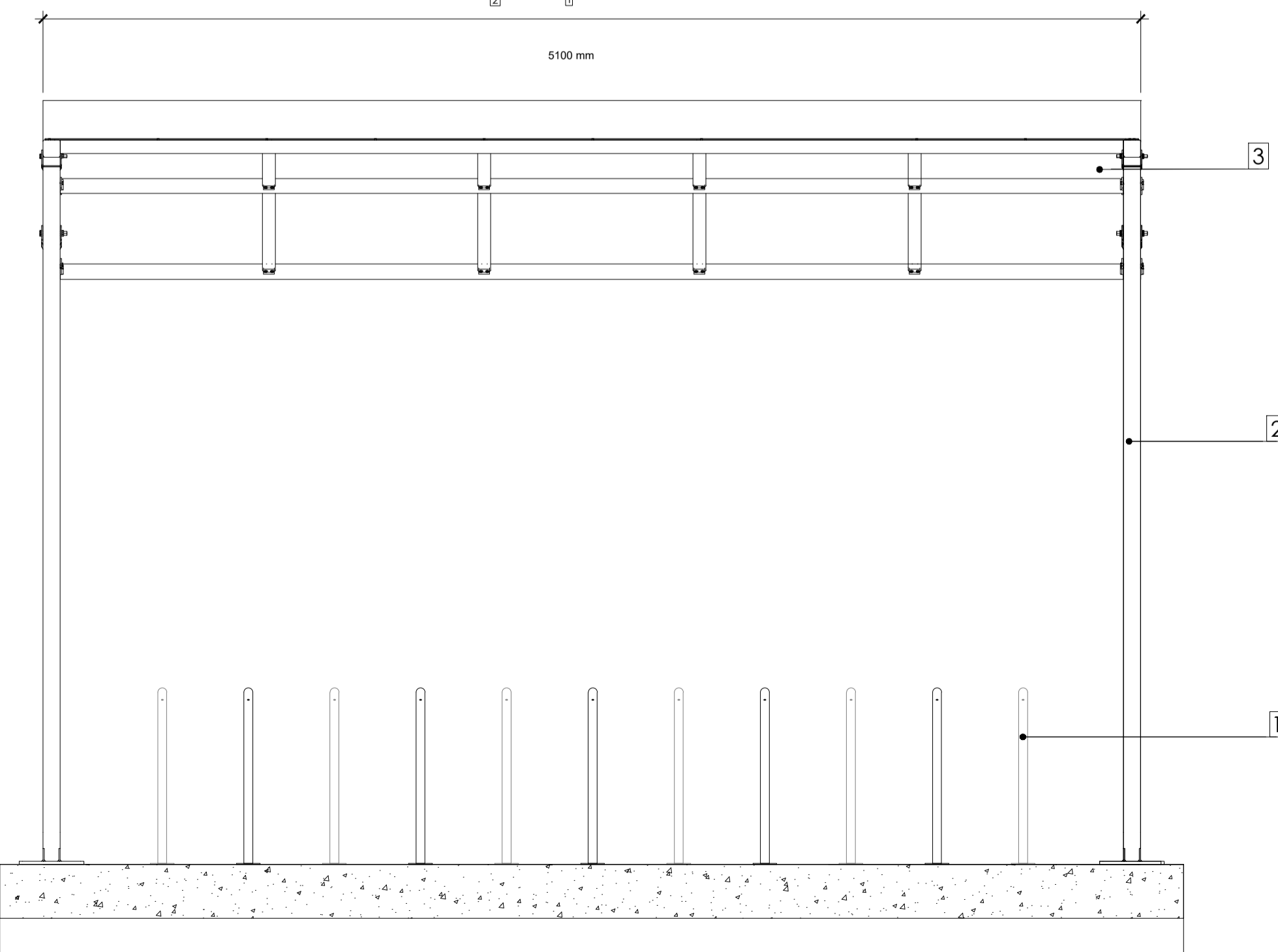


- Steel Cycle Stands fixed to concrete base in staggered arrangement
- Powdercoated Steel Structure
- Plycarbonate shelter

PLAN



ELEVATION



Key Plan
Scale 1:1000

1. This drawing is intended to show landscape architectural proposals only. Please refer to Architects and Engineer's drawings for relevant details of buildings, structures, roads, parking, etc.
2. The copyright of this drawing is vested with Murray & Associates. This drawing may not be copied or reproduced without written consent.
3. All materials referred to on this drawing, including plant species, are indicative and subject to change following detailed site investigation. Significant changes, if any are required, will be referred to the relevant authority for agreement.
4. This drawing is not suitable for use for construction purposes.
5. Discrepancies to be referred to Murray & Associates for clarification.

murray & associates
landscape architecture

16 The Scapoint Building, mll@murray-associates.com
44-45 Connaught Road, www.murray-associates.com
Dublin-3, D03 RFE3 +353 (0)1 854 0260

0 14/12/21 Details IS MB
REV DATE REVISION DRAWN CHECKED

CLIENT
Tetrarch Capital Ltd
PROJECT TITLE
Mill Road, Saggart, Co. Dublin

SHEET TITLE
Landscape Detail Plan (4)

SHEET NO.
1829_PL_D_04
SCALE
AS SHOWN
STAGE
Planning
SHEET SIZE
A1
REVISION
A
DATE
14/12/21